

**United States Department of the Interior
National Park Service**



**NATIONAL REGISTER OF HISTORIC PLACES
REGISTRATION FORM**

1. NAME OF PROPERTY

HISTORIC NAME: Keith House
OTHER NAME/SITE NUMBER: N/A

2. LOCATION

STREET & NUMBER: 2400 Harris Blvd. **NOT FOR PUBLICATION:** N/A
CITY OR TOWN: Austin **VICINITY:** N/A
STATE: Texas **CODE:** TX **COUNTY:** Travis **CODE:** 453 **ZIP CODE:** 78703-2406

3. STATE/FEDERAL AGENCY CERTIFICATION

As the designated authority under the National Historic Preservation Act, as amended, I hereby certify that this nomination request for determination of eligibility meets the documentation standards for registering properties in the National Register of Historic Places and meets the procedural and professional requirements set forth in 36 CFR Part 60. In my opinion, the property meets ___ does not meet the National Register criteria. I recommend that this property be considered significant ___ nationally ___ statewide locally. (___ See continuation sheet for additional comments.)

Carrie Munnell
Signature of certifying official

3-26-98
Date

State Historic Preservation Officer, Texas Historical Commission

State or Federal agency and bureau

In my opinion, the property ___ meets ___ does not meet the National Register criteria.
(___ See continuation sheet for additional comments.)

Signature of commenting or other official

Date

State or Federal agency and bureau

4. NATIONAL PARK SERVICE CERTIFICATION

I hereby certify that this property is:

- entered in the National Register
___ See continuation sheet.
- determined eligible for the National Register
___ See continuation sheet.
- determined not eligible for the National Register
- removed from the National Register
- other (explain): _____

Edson H. Beal
Signature of the Keeper 5-8-98
Date of Action

5. CLASSIFICATION

OWNERSHIP OF PROPERTY: Private

CATEGORY OF PROPERTY: Building

NUMBER OF RESOURCES WITHIN PROPERTY:	CONTRIBUTING	NONCONTRIBUTING
	1	1 BUILDINGS
	0	0 SITES
	0	0 STRUCTURES
	0	0 OBJECTS
	1	1 TOTAL

NUMBER OF CONTRIBUTING RESOURCES PREVIOUSLY LISTED IN THE NATIONAL REGISTER: 0

NAME OF RELATED MULTIPLE PROPERTY LISTING: N/A

6. FUNCTION OR USE

HISTORIC FUNCTIONS: DOMESTIC/single dwelling = House

CURRENT FUNCTIONS: DOMESTIC/single dwelling = House

7. DESCRIPTION

ARCHITECTURAL CLASSIFICATION: OTHER: Monterey

MATERIALS: FOUNDATION WOOD
WALLS BRICK, WOOD, STUCCO
ROOF ASPHALT
OTHER N/A

NARRATIVE DESCRIPTION (see continuation sheets 7-5 through 7-10).

United States Department of the Interior
National Park Service

National Register of Historic Places Continuation Sheet

Section 7 Page 5

Keith House
Austin, Travis County, Texas

The Keith House (1933) is a 2-story, single-family residence in Austin, Texas. Located in its original location at 2400 Harris Boulevard (formerly 2501 Windsor Road), the house marks the entrance to Pemberton Heights, a neighborhood of homes built almost exclusively during the first half of the 20th century. Featuring both Colonial Revival and Spanish Colonial Revival elements, the Keith House exemplifies characteristics of the Monterey style popular in the United States from 1925 - c.1955, and retains a high degree of architectural integrity.

The Keith House is at the northwest corner of the intersection of Windsor Road (a primary east-west artery) and Harris Boulevard. Situated at the apex of a hill, the house has an unobstructed view of the State Capitol and downtown Austin, about 2 miles southeast. The house is set into the far northwest corner of the lot, with the south and east portions of the lot serving as the yard. The property line to the south and east is a sweeping curve, following the curvature of the streets. The north of the lot is marked by a brick wall with stone sections at both ends. A wooden fence marks the west property line. A stone walk leads from the public sidewalk on the southeast to the front door. The U-shaped concrete driveway leads to a 2-car garage (non-contributing) at the northwest corner of the lot. Like most houses in the neighborhood, the Keith House is situated on semi-wooded lot. A mosaic reading "Harris Boulevard" (1927) is set into the curb in front of the house.

The Keith House is an example of the Monterey style, a revival of Anglo-influenced Spanish Colonial houses of northern California.¹ English Colonial influence is evident through the use of brick, placement of chimneys at the gable ends, 1/1 double-hung windows paired with shutters, and a central hallway. Spanish Colonial influences include a cantilevered wooden balcony, wooden balustrade, low-pitched roof, and varied exterior wall materials.²

The south and east elevations of the Keith House are visible from the street. The house features an irregular plan with a primary 2-story section and two single-story extensions. The 2-story main block is 5 bays wide, with the primary elevation on the east. The east elevation features a second-story cantilevered wooden porch on the three southernmost bays. French doors open onto the balcony from the second-story bedrooms and staircase landing. The roof features exposed rafter ends. The front door, at the center on the east elevation, is covered by the porch of the 1-story wing, which meets the 2-story main block at the two northernmost bays. The porch of the extension is 1-bay deep, and meets the 2-story block at its central bay. The wing features a gable end with a centrally-placed external

¹McAlester & McAlester, A Field Guide to American Houses, p. 431.

²Harrison, Henry S., Houses: the Illustrated Guide to Construction, Design, and Systems, pp. 113, 150.

United States Department of the Interior
National Park Service

National Register of Historic Places Continuation Sheet

Section 7 Page 6

Keith House
Austin, Travis County, Texas

chimney flanked by 1/1 windows.

Non-functional chimneys (serving only as roofline ornamentation) are centrally placed on the south and west elevations of the main block. The south elevation features symmetrically-placed 1/1 windows, with 6/6 screens on both floors. Shutters on the south elevation (temporarily removed when the house was photographed, see photo 4) are undergoing restoration. The gable features quarter-round attic vents. The north elevation features five symmetrically-placed 1/1 windows, with 6/6 screens, on the ground floor (two of which are on the 1-story wing). The second floor has identical fenestration as on the south elevation, with similar quarter-round attic vents. There are no shutters on the north elevation, which is approximately six feet from the brick wall which marks the property line.

The west elevation features a small second-story balcony, with wooden a balustrade, supported by wooden 4x4 posts. The back door is on the porch beneath the balcony.

The primary entrance in the center of the east elevation leads to a small foyer dominated by an elegant 180-degree spiral staircase. The mahogany railing is curved and precisely fitted, and the wooden banisters are closely spaced (two per step). A door on the north wall of the foyer leads to the "front room," which fills the east wing of the house. The front room features a Federal-style carved mantelpiece and functioning fireplace on the east wall, flanked by identical 1/1 windows. A door on the west wall of the front room leads to the dining room. A door on the west wall of the dining room leads to the kitchen. South of the kitchen is a breakfast nook, separated from the kitchen by an archway.

The south door off the foyer leads to a guest bedroom. A hallway runs to the north of the staircase, terminating at the kitchen. The bathroom is accessible from the central hallway and also from the guest bedroom.

The 2nd floor plan includes two bedrooms and a bathroom. The master bedroom occupies the north side, and another bedroom occupies the south side. The east balcony is accessible from both bedrooms, and also from the foyer at the top of the stairs. The bathroom, west of the stairs, is accessible from both bedrooms. The west balcony is accessible only from the south bedroom.

The interior of the Keith House retains a high degree of integrity, appearing much as it would have in the 1930s. All woodwork and doors are original, including the hardware. The floors throughout the house are oak, except in the kitchen. During a recent kitchen renovation, the current owners removed linoleum and refinished the pine floor. Both bathrooms retain original fixtures, hardware, and tiles. The floors in both bathrooms consist of 1½-inch x ¾-inch white tiles and 3/8-inch x 3/8-inch blue or green tiles, laid in geometric patterns. The walls are clad in 4x4-inch off-

United States Department of the Interior
National Park Service

National Register of Historic Places
Continuation Sheet

Section 7 Page 7

Keith House
Austin, Travis County, Texas

white tiles, trimmed in blue and green tile.

The windows, made of old-growth cedar, are currently being re-screened and painted. The restoration craftsman noted that they are in excellent condition for their age.

During the kitchen renovation, the owners discovered that the original base cabinets had been replaced with low-quality cabinets, and were damaged beyond repair. The owners opted to replace all kitchen cabinets with a comparable, custom-made style. The original kitchen wallpapers were intact under two layers of wallpaper.

In other areas of the house, there is evidence that the walls and ceilings have been repaired or replaced due to water damage and the installation of the central air conditioning units and ductwork. Portions of the original wallpapers are in evidence in the crawl spaces above the master bedroom and in the ductwork area in the opening at the second-story stair landing.

The two chandeliers in the front room and the light fixture in the entry are original, but all others have been replaced with compatible light fixtures from the 1900s-1940s. The Keith House retains a high degree of integrity of location, setting, workmanship, materials, design, feeling, and association. Its original salient features remain intact, from the interior woodwork to the view of the capitol and downtown. Only minor changes, such as paint color, have occurred since the house's construction in 1933.

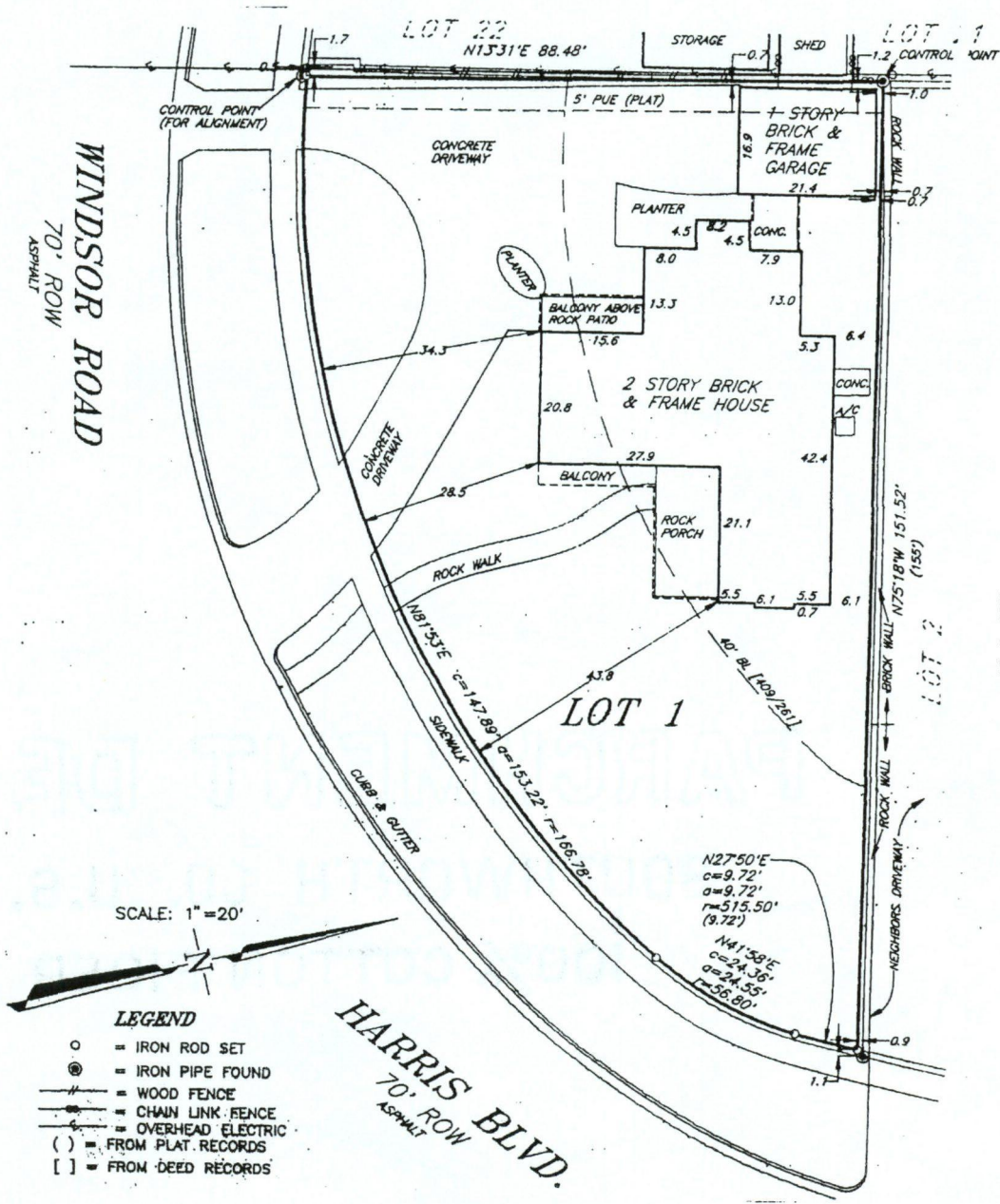
United States Department of the Interior
National Park Service

National Register of Historic Places Continuation Sheet

Section 7 Page 8

Keith House
Austin, Travis County, Texas

Keith House
Survey Plat



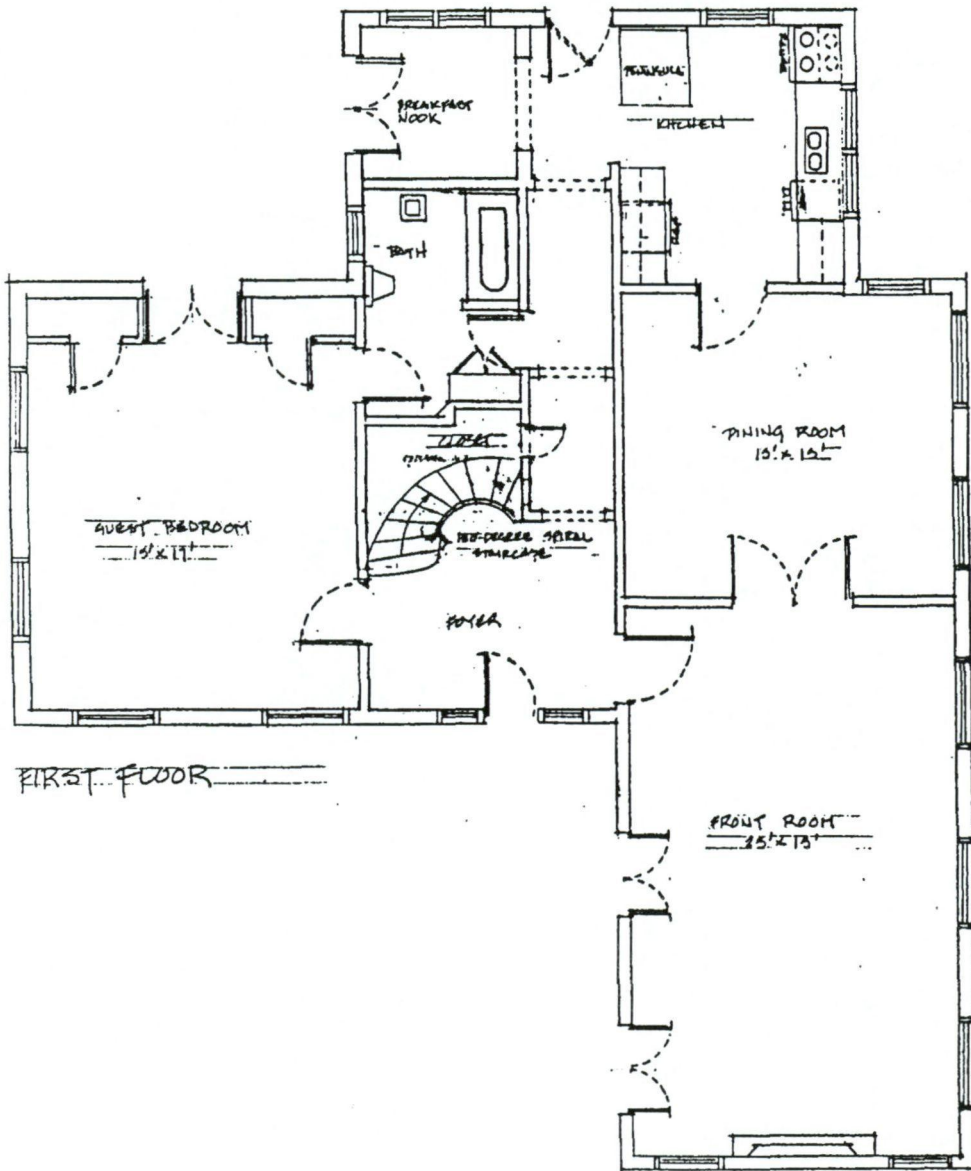
United States Department of the Interior
National Park Service

National Register of Historic Places
Continuation Sheet

Section 7 Page 9

Keith House
Austin, Travis County, Texas

First Floor Plan



NOT TO SCALE

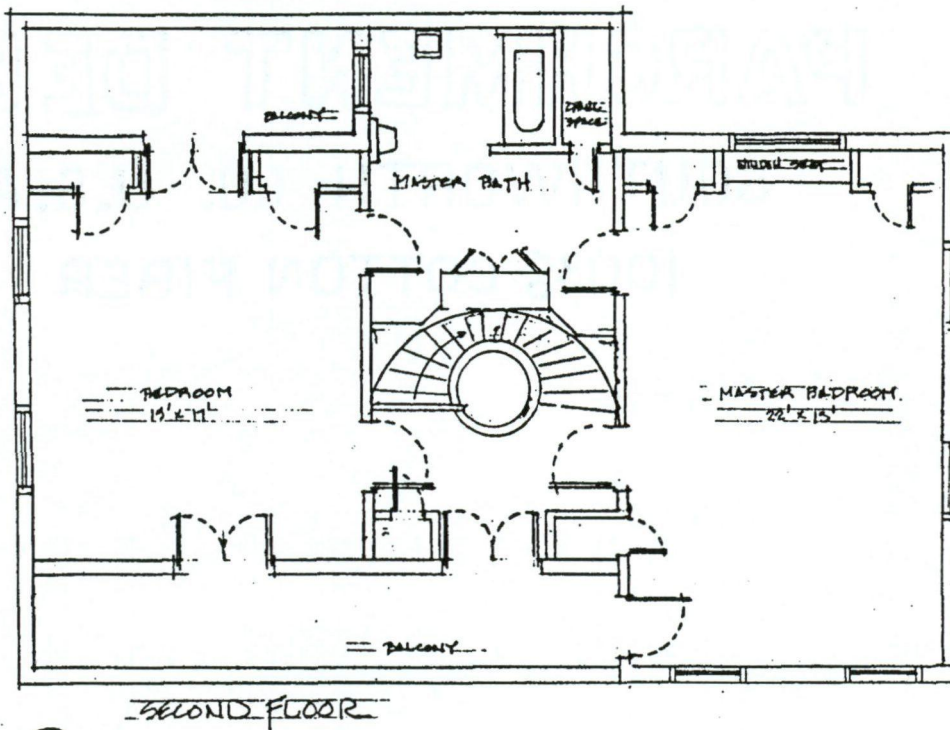
United States Department of the Interior
National Park Service

National Register of Historic Places Continuation Sheet

Section 7 Page 10

Keith House
Austin, Travis County, Texas

Keith House
Second Floor Plan



NOT TO SCALE

8. STATEMENT OF SIGNIFICANCE

APPLICABLE NATIONAL REGISTER CRITERIA

- A** PROPERTY IS ASSOCIATED WITH EVENTS THAT HAVE MADE A SIGNIFICANT CONTRIBUTION TO THE BROAD PATTERNS OF OUR HISTORY.
- B** PROPERTY IS ASSOCIATED WITH THE LIVES OF PERSONS SIGNIFICANT IN OUR PAST.
- C** PROPERTY EMBODIES THE DISTINCTIVE CHARACTERISTICS OF A TYPE, PERIOD, OR METHOD OF CONSTRUCTION OR REPRESENTS THE WORK OF A MASTER, OR POSSESSES HIGH ARTISTIC VALUE, OR REPRESENTS A SIGNIFICANT AND DISTINGUISHABLE ENTITY WHOSE COMPONENTS LACK INDIVIDUAL DISTINCTION.
- D** PROPERTY HAS YIELDED, OR IS LIKELY TO YIELD, INFORMATION IMPORTANT IN PREHISTORY OR HISTORY.

CRITERIA CONSIDERATIONS: N/A

AREAS OF SIGNIFICANCE: Architecture

PERIOD OF SIGNIFICANCE: 1933-1948

SIGNIFICANT DATES: 1933

SIGNIFICANT PERSON: N/A

CULTURAL AFFILIATION: N/A

ARCHITECT/BUILDER: William Dixon Anderson, designer / Calcasieu Lumber Co., builder

NARRATIVE STATEMENT OF SIGNIFICANCE (see continuation sheets 8-11 through 8-14).

9. MAJOR BIBLIOGRAPHIC REFERENCES

BIBLIOGRAPHY (see continuation sheets 9-15 through 9-16).

PREVIOUS DOCUMENTATION ON FILE (NPS): N/A

- preliminary determination of individual listing (36 CFR 67) has been requested.
- previously listed in the National Register
- previously determined eligible by the National Register
- designated a National Historic Landmark
- recorded by Historic American Buildings Survey #
- recorded by Historic American Engineering Record #

PRIMARY LOCATION OF ADDITIONAL DATA:

- State historic preservation office (*Texas Historical Commission*)
- Other state agency
- Federal agency
- Local government
- University
- Other -- Specify Repository: *Austin History Center, Austin, TX*

United States Department of the Interior
National Park Service

National Register of Historic Places Continuation Sheet

Section 8 Page 11

Keith House
Austin, Travis County, Texas

William Dixon Anderson, a noted Austin builder and salesman employed by the Calcasieu Lumber Company, designed the Keith House (1933) for his sister, Maggie Mae Keith, and her husband Jacque Nicholas Keith. A well-crafted example of an early 20th century Monterey home featuring elements of Colonial and Spanish Colonial styles, the Keith House meets Criterion C in the Area of Architecture, at the local level of significance.

One of the most prestigious neighborhoods in Austin, Pemberton Heights developed in the late 1920s. The Austin Development Company highlighted the neighborhood's amenities and proximity to the center of town in a brochure, noting "over five miles of paved and shaded streets and sidewalks, and over seven acres of private park adjoining and adjacent to Pease and Enfield Parks on the north... This plateau sub-division overlooks the entire city and its surrounding territory. It is over 100 feet higher than Congress Avenue and only eight minutes from the Business District." The developer advertised Pemberton Heights as a "well balanced" community with some streets planned for "fancy \$3500-\$4000 cottages" and adjacent streets reserved for "\$150,000 mansions."³ Harris Boulevard was among the first streets laid out and developed in Pemberton Heights. New homes sold briskly at first, but the Great Depression slowed new growth in the 1930s. The post-World War II housing boom led to the full development of Pemberton Heights by the 1950s.

Calcasieu Lumber Company was founded in Austin in 1883 by brothers William Sherman Drake and Carl F. Drake, formerly of Connecticut. The company was named after Calcasieu Parish, Louisiana, source of the company's long-leaf pine. Calcasieu employee William Dixon Anderson (1888-1972) was born in Austin to Ed and Mary Anderson. Ed Anderson, a Travis County sheriff and County Treasurer, was the grandson of Thomas Anderson, builder of Anderson Mill on the Colorado River in the Hill Country west of Austin.⁴ William D. Anderson studied architecture (though he never became a licensed architect) under Samuel Gideon at the University of Texas, and joined Calcasieu Lumber Company in 1915. He remained in the company's employment for 46 years, ultimately becoming its chief builder.⁵ It is unknown how many houses he built in the area. Known locally as "the man in the derby hat," for his long-standing hat preference, Anderson was also a noted local historian, best remembered for his stories of life in Austin in the 19th and early 20th centuries. His most famous work, "Kingdom in the Hills" documented life at

³Austin Development Company, Pemberton Heights promotional brochure, c.1928, quoted by Susan J. Pryor in "Heritage" (Keller Williams Realty newsletter, Austin, TX), April/May 1997 .

⁴Fellow Texans in Profile, 1948, p 22. Today, the mill is preserved as a museum and lends its name to Anderson Mill Road.

⁵Anderson, W. D. file, Austin History Center.

United States Department of the Interior
National Park Service

National Register of Historic Places Continuation Sheet

Section 8 Page 12

Keith House
Austin, Travis County, Texas

Anderson Mill. The Austin History Center maintains a collection of Anderson's writings.⁶

Anderson purchased the Keith House lot in 1927, and sold it to his sister Maggie Mae (Anderson) Keith and her husband, Jacque Nicholas Keith, in 1932. Calcasieu Lumber Co. built the house as designed by Anderson in 1933. In a recent telephone interview, Anderson's son, William D. Anderson, Jr., attributed inspiration for the Keith House design to a house in Temple, Texas, which his father sketched during a series of weekend trips.⁷

Jacque Nicholas Keith (1886-1958) graduated from the University of Texas School of Law in 1909, and married Maggie Mae Anderson in 1915. Keith worked at the Austin Realty Company and then at his own law practice until 1918, when he became an Internal Revenue Service agent. Maggie Mae sold the Keith House in 1962 and moved in with her sister, Lucy Anderson.⁸

The Keith House was built at the height of the Great Depression, a time during which many Austin construction companies folded. According to the Austin City Directory, few builders remained in the city in 1933, and only well-established companies, including Calcasieu Lumber, C. W. Moore, Becker Lumber, and Keily Van C. Lumber, advertised significantly during this period. These vertically-integrated companies built residential and commercial buildings, and also handled building supplies. This diversification allowed Calcasieu to weather the storm of the Depression. William D. Anderson employed craftsman Anthony Edburg, an experienced carpenter and general contractor.⁹

The Spanish Colonial architectural style developed in the southwestern United States and northern Mexico from the 1700s to the mid-1800s. With the influx of English settlers in the west, the Spanish Colonial style began to exhibit English Colonial features, particularly cantilevered second-story porches with delicate wooden balustrades.¹⁰

The Monterey style, first built in the mid-1920s in California, incorporated elements of both the Spanish Colonial and English Colonial styles. Typical Monterey houses consist of two stories, and are often configured in an "L" shape. The style is characterized by a low-pitched gable roof and a second-story, cantilevered balcony in front, covered by the principal roof. The first and second stories often are clad in different materials, such as wood siding, brick, and stucco. Spanish Colonial windows paired with false shutters are typical, as are full-length French windows

⁶Ibid.

⁷Anderson, William Dixon, Jr., telephone interview, 6 January 1998.

⁸German, Mary Francis Keith (daughter of original owners), interview, Bryan, Texas.

⁹Austin City Directories, 1914, 1924, 1932-33.

¹⁰McAlester, p. 130.

United States Department of the Interior
National Park Service

National Register of Historic Places Continuation Sheet

Section 8 Page 13

Keith House
Austin, Travis County, Texas

opening onto the balcony.¹¹

The Keith House exhibits features the Spanish and English Colonial elements common in Monterey style houses, most notably a second-story cantilevered wooden balcony covered by the main roof. While the house is primarily of buff brick veneer, a portion of the second-story rear facade is covered in stucco. English Colonial influences are evident in the use of quarter-round attic vents, and chimneys centrally placed on the gable ends. Additionally, the interior contains two notable English Colonial features: a 180-degree Federal-style spiral staircase and an Adam-style mantelpiece.

In the mid-1920s, the application of a masonry veneer to a balloon frame (in place of solid masonry exterior walls) substantially reduced the cost of producing a "masonry" home. This development allowed middle class housing to incorporate the grand architectural styles previously afforded only to the very wealthy. The Keith House was no doubt produced at less cost than a house built of solid masonry.

The Keith House's east-southeast orientation allows summer breezes to flow through the house, keeping it several degrees cooler inside. The house is laid out for optimum airflow through the front and rear doors at either end of the central hallway on the first floor. The stucco on the west side reflects the intense afternoon Texas sun, keeping the upstairs cool. Large covered balconies, optimally placed on the east and west sides, along with the covered front porch, protect key windows and doors from direct sunlight. Conversely, because the angle of the winter sun is lower, sunlight enters the house on the east, southeast, and west sides, helping to keep the house warmer in winter.

The Keith House was among the first Monterey style houses built in Austin. Located at the gateway to the Pemberton Heights neighborhood, the prominently-placed house probably influenced later houses in the area. The Keith House is eligible under Criterion C, in the Area of Architecture, at the local level of significance, because it embodies the distinctive characteristics of the Monterey style popular at the time of its construction. The Keith House retains integrity of location, setting, workmanship, materials, design, feeling, and association to a high degree. In 1994, the Texas Historical Commission designated the Keith House as a Recorded Texas Historic Landmark.

¹¹Ibid.

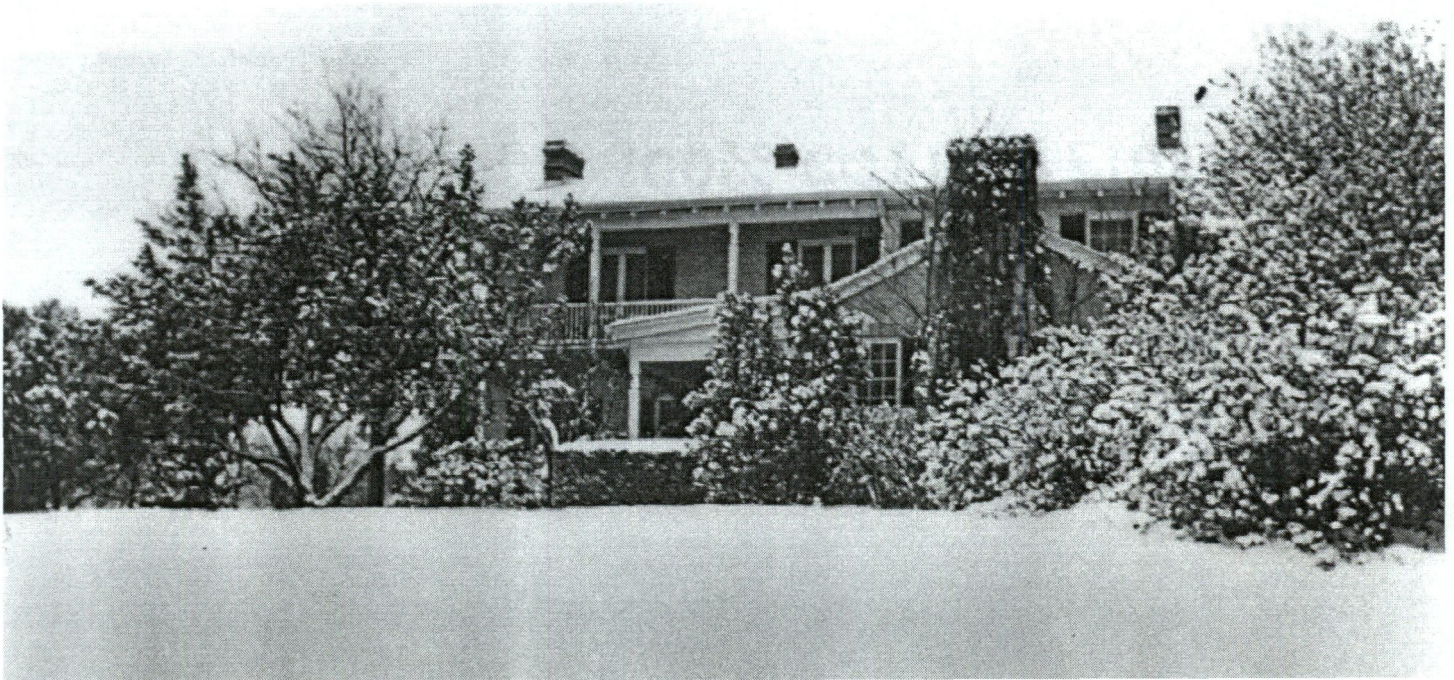
United States Department of the Interior
National Park Service

National Register of Historic Places Continuation Sheet

Section 8 Page 14

Keith House
Austin, Travis County, Texas

Keith House
Photo taken 1941



United States Department of the Interior
National Park Service

National Register of Historic Places
Continuation Sheet

Section 9 Page 15

Keith House
Austin, Travis County, Texas

Anderson, William Dixon, Jr. Telephone interview, 6 January 1998.

Barkley, Mary Starr. A History of Central Texas. Copy at Austin History Center, Austin, Texas.

Fellow Texans in Profile, 1948, Austin History Center, Austin, Texas.

"Heritage" (Keller Williams Realty newsletter), Susan J. Pryor, Editor, April/May, 1997.

Harrison, Henry S. Houses: The Illustrated Guide to Construction, Design, and Systems, National Institute of Real Estate Brokers of the National Association of Realtors, 1976.

"Keith House." Recorded Texas Historic Landmark nomination file. Texas Historical Commission, Austin, Texas.

McAlester, Virginia and Lee. Field Guide to American Houses, Virginia and Lee McAlester (New York: Alfred A. Knopf) , 1990.

Texas State Bar Records, Texas State Bar Office.

Primary Sources at Austin History Center, Austin, Texas:

Anderson, W.D., File.

Austin City Directories, 1909, 1914, 1916, 1924, 1932, 1935, 1961, 1962, 1963, 1967, 1979.

Austin Deed Records:

1927, Volume 409, p. 261.

1932, Volume 481, p. 205.

1981, Volume 7322, p. 432.

1989, Volume 10879, p. 908.

Austin Phone Book, May 1934.

Calcasieu Files, Austin History Center, Austin, Texas.

Sanborn Fire Insurance Map, Austin, Texas, 1940.

Tax Records:

W. D. Anderson, 1932.

J. N. Keith, 1933, 1934.

Waterloo Scrapbook, Audrey Bateman, 1977.

United States Department of the Interior
National Park Service

National Register of Historic Places Continuation Sheet

Section 9 Page 16

Keith House
Austin, Travis County, Texas

Interviews

William D. Anderson, by Hildegard Stjepceovich, December 12, 1969, Tape No. 37, Austin History Center.

William D. Anderson, Jr., telephone interview, 6 January 1998, Austin, Texas.

Mrs. Paul German (Mary Francis Keith), Bryan, Texas.

Mrs. Olive Huffman, 2414 Harris Blvd., Austin, Texas.

Mr. Peter Pfeiffer, AIA, 1800 W. Sixth Street, Austin, Texas.

10. GEOGRAPHICAL DATA

ACREAGE OF PROPERTY: less than one acre

UTM REFERENCES Zone Easting Northing
 14 619560 3351500

VERBAL BOUNDARY DESCRIPTION Block 1, Lot 1, first section of Pemberton Heights Addition, Austin, Travis County, Texas, according to the map or plat thereof recorded in Volume 3, Page 136, Plat Records of Travis County, Texas

BOUNDARY JUSTIFICATION Nomination includes all property historically associated with the building.

11. FORM PREPARED BY (with Assistance from Gregory Smith, Historian, Texas Historical Commission)

NAME/TITLE: James L. Magnuson

ORGANIZATION: N/A

DATE: 12-15-97

STREET & NUMBER: 2400 Harris Blvd.

TELEPHONE: (512) 838-4726

CITY OR TOWN: Austin

STATE: TX

ZIP CODE: 78703-2406

ADDITIONAL DOCUMENTATION

CONTINUATION SHEETS

MAPS (see continuation sheet MAP-18)

PHOTOGRAPHS (see continuation sheet PHOTO-17)

ADDITIONAL ITEMS N/A

PROPERTY OWNER

NAME: James L. and Linda W. Magnuson

STREET & NUMBER: 2400 Harris Blvd.

TELEPHONE: (512) 838-4726

CITY OR TOWN: Austin

STATE: TX

ZIP CODE: 78703-2406

United States Department of the Interior
National Park Service

National Register of Historic Places
Continuation Sheet

Section PHOTO Page 17

Keith House
Austin, Travis County, Texas

PHOTO LOG

Keith House

2400 Harris Blvd.

Austin, Texas

Photographed by James Magnuson

November 1997

Negatives on file with property owner

East elevation

Camera facing west

Photograph 1 of 6

Front entry, oblique

Camera facing northwest

Photograph 2 of 6

Second floor balcony - detail

Camera facing northwest

Photograph 3 of 6

South elevation

Camera facing north

Photograph 4 of 6

Southwest oblique

Camera facing northeast

Photograph 5 of 6

North elevation

Camera facing south

Photograph 6 of 6

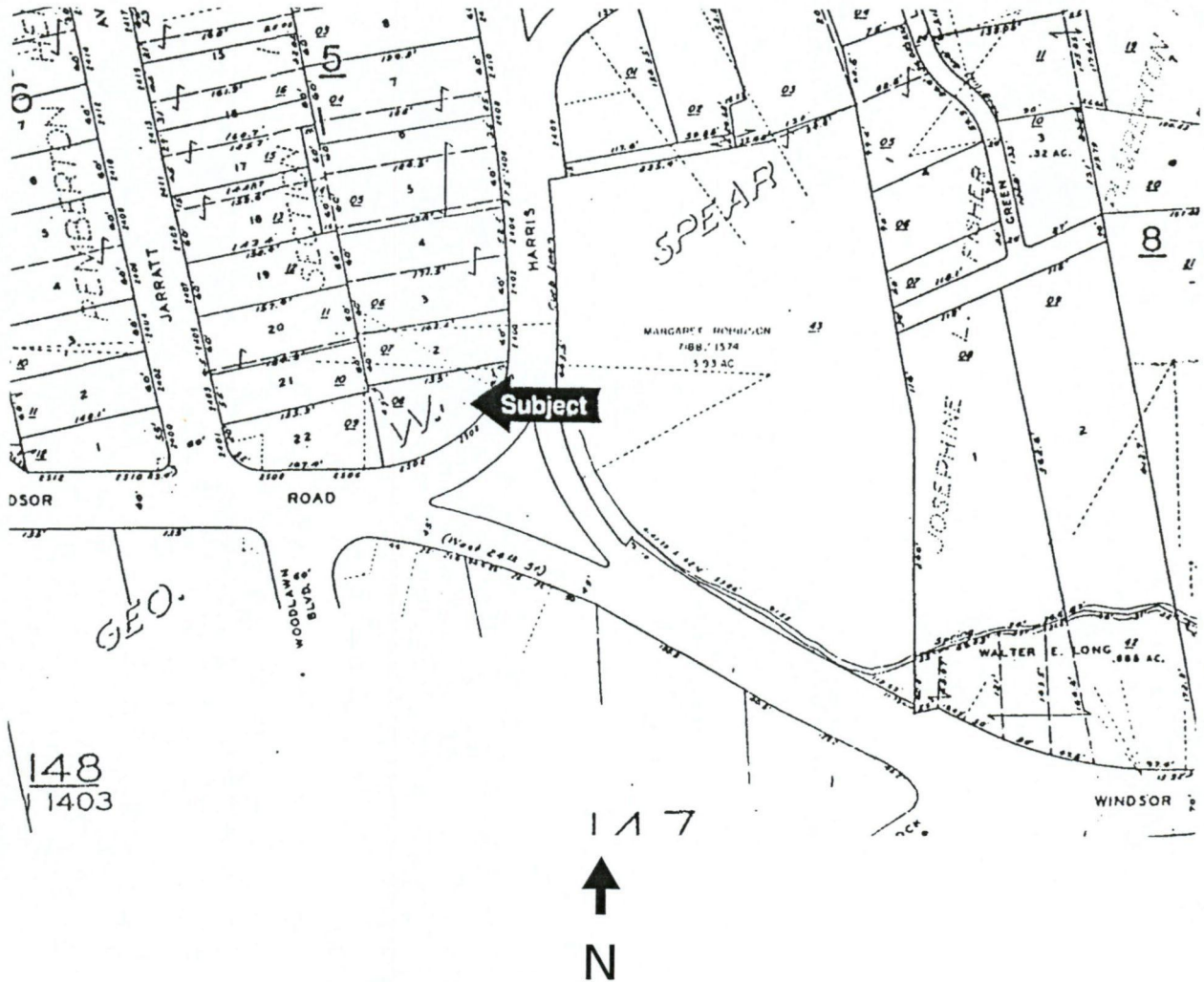
United States Department of the Interior
National Park Service

National Register of Historic Places
Continuation Sheet

Section MAP Page 18

Keith House
Austin, Travis County, Texas

Plat map



UNITED STATES DEPARTMENT OF THE INTERIOR
NATIONAL PARK SERVICE

NATIONAL REGISTER OF HISTORIC PLACES
EVALUATION/RETURN SHEET

REQUESTED ACTION: NOMINATION

PROPERTY NAME: Keith House

MULTIPLE NAME:

STATE & COUNTY: TEXAS, Travis

DATE RECEIVED: 4/10/98 DATE OF PENDING LIST: 4/21/98
DATE OF 16TH DAY: 5/07/98 DATE OF 45TH DAY: 5/25/98
DATE OF WEEKLY LIST:

REFERENCE NUMBER: 98000448

NOMINATOR: STATE

REASONS FOR REVIEW:

APPEAL: N DATA PROBLEM: N LANDSCAPE: N LESS THAN 50 YEARS: N
OTHER: N PDIL: N PERIOD: N PROGRAM UNAPPROVED: N
REQUEST: N SAMPLE: N SLR DRAFT: N NATIONAL: N

COMMENT WAIVER: N

ACCEPT RETURN REJECT 5.8.98 DATE

ABSTRACT/SUMMARY COMMENTS:

**Entered in the
National Register**

RECOM./CRITERIA _____

REVIEWER _____ DISCIPLINE _____

TELEPHONE _____ DATE _____

DOCUMENTATION see attached comments Y/N see attached SLR Y/N



KEITH HOUSE
2400 HARRIS BLVD.
AUSTIN, TRAVIS CO., TEXAS

PHOTOGRAPH 1 of 6

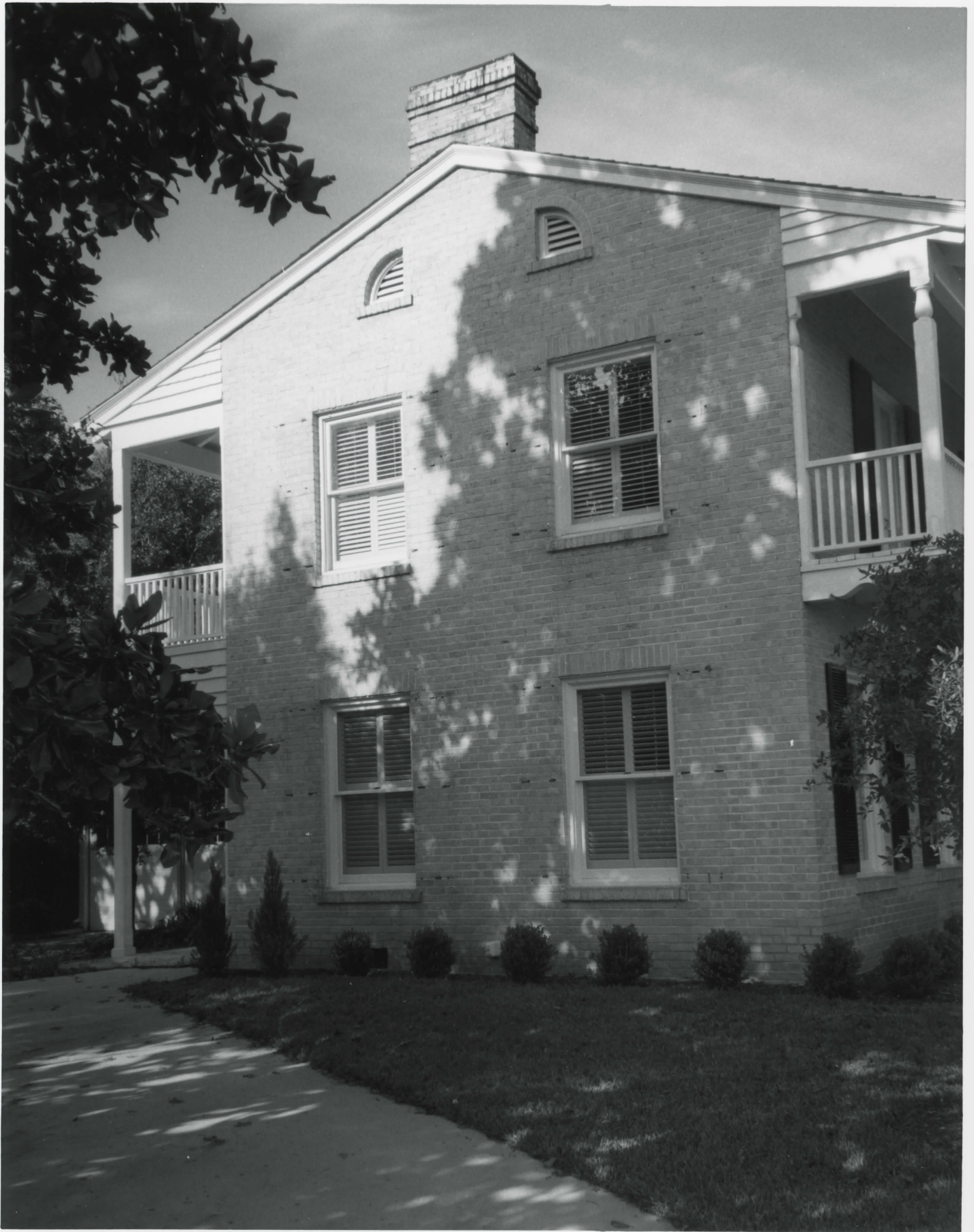


KEITH HOUSE
2400 HARRIS BLVD.
AUSTIN, TRAVIS CO., TEXAS
PHOTOGRAPH 2 of 6



KEITH HOUSE
2400 HARRIS BLVD.
AUSTIN, TRAVIS CO., TEXAS

PHOTOGRAPH 3 of 6



KEITH HOUSE
2400 HARRIS BLVD.
AUSTIN, TRAVIS CO., TEXAS
PHOTOGRAPH 4 of 6

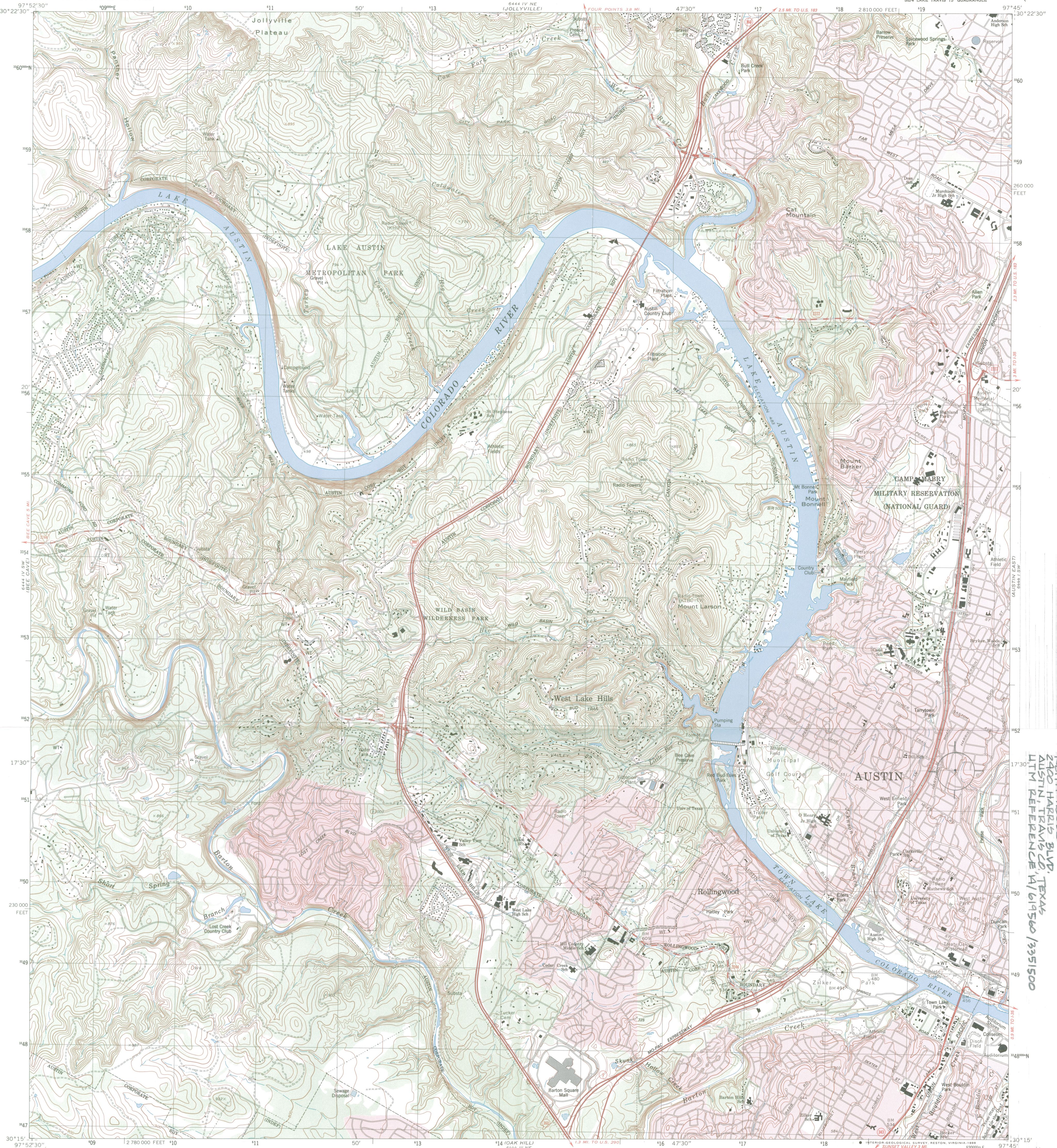


KEITH HOUSE
2400 HARRIS BLVD.
AUSTIN, TRAVIS CO., TEXAS

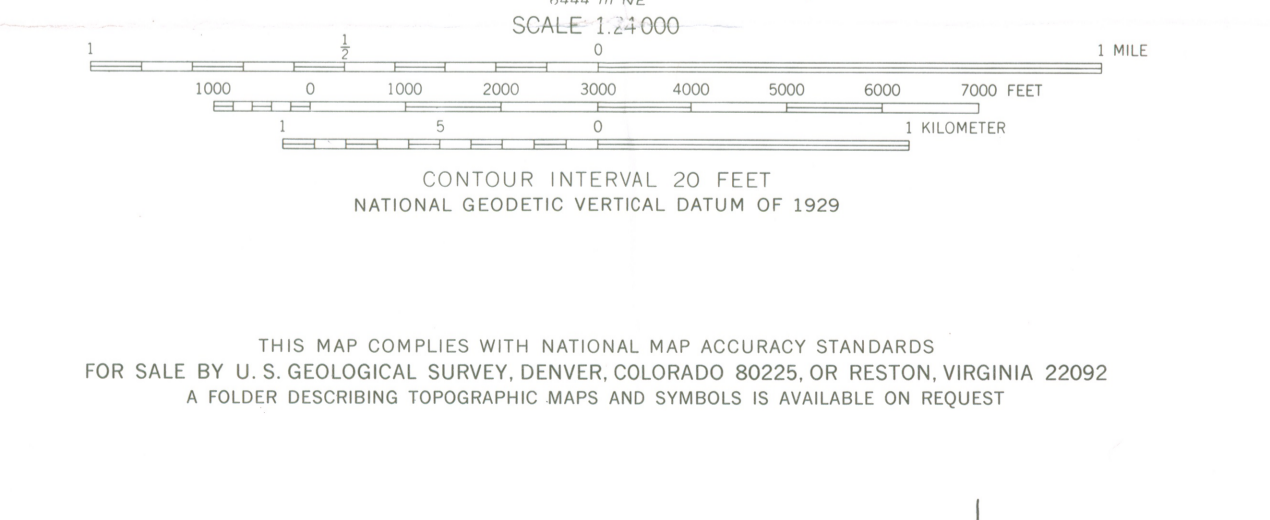
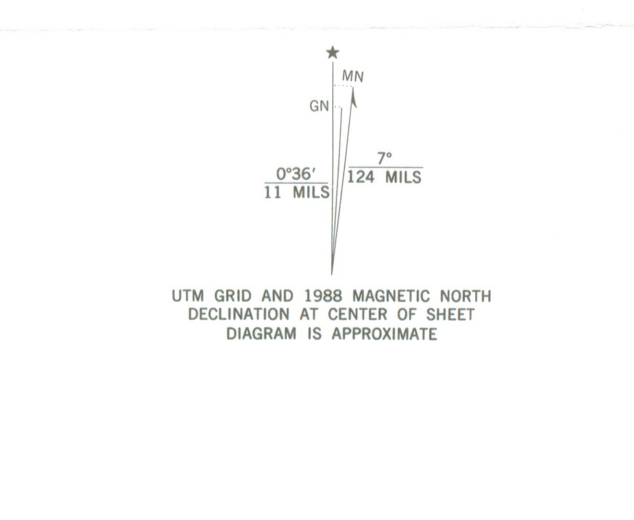
PHOTOGRAPH 5 of 6



KEITH HOUSE
2400 HARRIS BLVD.
AUSTIN TRAVIS CO., TEXAS
PHOTOGRAPH 6 of 6



Mapped, edited, and published by the Geological Survey in cooperation with City of Austin. Control by USGS and NOS/NOAA. Topography by photogrammetric methods from aerial photographs taken 1952. Field checked 1954. Revised from aerial photographs taken 1985. Field checked 1986. Map edited 1988. Projection and 10,000-foot grid ticks: Texas coordinate system, central zone (Lambert conformal conic) 1000-meter Universal Transverse Mercator grid, zone 14 1927 North American Datum. To place on the predicted North American Datum 1983 move the projection lines 18 meter south and 28 meters east as shown by dashed corner ticks. Red tint indicates areas in which only landmark buildings are shown. Fine red dashed lines indicate selected fence lines. There may be private inholdings within the boundaries of the National or State reservations shown on this map.



ROAD CLASSIFICATION

Primary highway, hard surface	Light-duty road, hard or improved surface
Secondary highway, hard surface	Unimproved road
Interstate Route	U. S. Route
	State Route

AUSTIN WEST, TEX.
SE/4 LAKE TRAVIS 15' QUADRANGLE
30097-07-TF-024
1988
DMA 6444 IV SE-SERIES V882

3097-231

KEITH HOUSE
2400 HARRIS BLVD., TEXAS
AUSTIN, TRAVIS CO, TX
UTM REFERENCE: 14/619560/3351500