



851

United States Department of the Interior
National Park Service

NATIONAL REGISTER OF HISTORIC PLACES
REGISTRATION FORM

1. NAME OF PROPERTY

HISTORIC NAME: Bedford School
OTHER NAME/SITE NUMBER: N/A

2. LOCATION

STREET & NUMBER: 2400 School Lane
CITY OR TOWN: Bedford
STATE: Texas CODE: TX COUNTY: Tarrant CODE: 439
NOT FOR PUBLICATION: N/A
VICINITY: N/A
ZIP CODE: 76021

3. STATE/FEDERAL AGENCY CERTIFICATION

As the designated authority under the National Historic Preservation Act, as amended, I hereby certify that this x nomination request for determination of eligibility meets the documentation standards for registering properties in the National Register of Historic Places and meets the procedural and professional requirements set forth in 36 CFR Part 60. In my opinion, the property x meets does not meet the National Register criteria. I recommend that this property be considered significant nationally statewide x locally. (See continuation sheet for additional comments.)

Curtis J. Jernell
Signature of certifying official

6-24-97
Date

State Historic Preservation Officer, Texas Historical Commission

State or Federal agency and bureau

In my opinion, the property meets does not meet the National Register criteria.
(See continuation sheet for additional comments.)

Signature of commenting or other official

Date

State or Federal agency and bureau

4. NATIONAL PARK SERVICE CERTIFICATION

I hereby certify that this property is:

- entered in the National Register
 See continuation sheet.
- determined eligible for the National Register
 See continuation sheet.
- determined not eligible for the National Register
- removed from the National Register
- other (explain):

[Signature]
Signature of the Keeper

Date of Action

8/14/97

5. CLASSIFICATION

OWNERSHIP OF PROPERTY: Public - local

CATEGORY OF PROPERTY: Building

NUMBER OF RESOURCES WITHIN PROPERTY:	CONTRIBUTING	NONCONTRIBUTING
	1	0 BUILDINGS
	0	0 SITES
	0	0 STRUCTURES
	0	0 OBJECTS
	1	0 TOTAL

NUMBER OF CONTRIBUTING RESOURCES PREVIOUSLY LISTED IN THE NATIONAL REGISTER: 0

NAME OF RELATED MULTIPLE PROPERTY LISTING: N/A

6. FUNCTION OR USE

HISTORIC FUNCTIONS: EDUCATION/School

CURRENT FUNCTIONS: RECREATION AND CULTURE/museum

7. DESCRIPTION

ARCHITECTURAL CLASSIFICATION: Other: Vernacular school building

MATERIALS: FOUNDATION CONCRETE
WALLS BRICK
ROOF ASPHALT
OTHER WOOD; GLASS

NARRATIVE DESCRIPTION (see continuation sheets 7-5 through 7-8).

United States Department of the Interior
National Park Service

National Register of Historic Places Continuation Sheet

Section 7 Page 5

Bedford School
Bedford, Tarrant County, Texas

DESCRIPTION

The Bedford School in Bedford, Tarrant County, is a 2-story brick building erected in 1914-15 and nearly destroyed by fire in 1991. The school faces south and stands at the crest of a hill, one of the highest points in Bedford, visible from many parts of the city. The building features a rectangular plan and load-bearing masonry construction. A low concrete wall that extends around the base of the building obscures its pier-and-beam foundation. The lack of substantial ornamentation prohibits the classification of the building as an example of any architectural style or movement; however, the large, round-arch opening on the front constitutes the school's most distinctive architectural feature. A recently completed rehabilitation repaired the 1991 fire damage and removed the 1950s additions on the west, east, and north (rear) elevations, returning the building to its 1914-15 appearance. A new rear addition, visually separated from the original building by a glass walkway, constitutes the only major exterior alteration; however, its brick construction, scale and siting minimally impact the building's historic integrity, which it retains to a high degree.

The Bedford School stands on a 6-acre tract of land at the northwest corner of Bedford Road and Municipal Drive in the community of Bedford in northeast Tarrant County. Gently rolling terrain that originally featured grassy prairies and tree-lined waterways characterize the surrounding topography. With the advent of permanent settlement during the third quarter of the 19th century, settlers cleared nearby lands for the cultivation of crops and other agricultural-related purposes. Since the 1950s, however, intense development resulted in the construction of several single- and multiple-family housing units.

The 6-acre school parcel, in sharp contrast, remains largely open and undeveloped, with isolated post oak and juniper trees the only plantings on the property (Photo 1). Since on one of the highest points in the city, the land slopes downward in all directions from the school building, most noticeably toward the south. A paved driveway (actually an extension of Municipal Drive) built along the southwest boundary of the property provides access to the school. A parking lot occupies the southwest corner of the parcel, about 150 feet from the school (Map-20).

The 2-story building, which faces south toward Bedford Road, features a rectangular plan with a 2-story rectangular rear addition attached by an enclosed glass walkway (Photo 5; Map-23, 24). Load-bearing masonry construction of the building rests on a pier-and-beam foundation with a concrete base around the perimeter. A dedication stone that identifies the contractors and the school trustees who held office at the time of construction appears near the base of the building's southeast corner. Bricks used on the exterior are stamped with the name "Globe," presumably the kiln where they were manufactured. The bricks originally displayed a deep red color, but were painted yellow (in all likelihood, to match the color of the bricks used in the construction of the various

United States Department of the Interior
National Park Service

National Register of Historic Places Continuation Sheet

Section 7 Page 6

Bedford School
Bedford, Tarrant County, Texas

1950s additions). Fire gutted much of the building in 1991, including the roof, but physical evidence revealed that the school originally had a flat roof covered with tar and felt or a tar-and-gravel mixture.

Since the school has been altered over the years, the building will be described first as it appeared originally and then how it changed. Such an approach will enable a better understanding of the school's physical evolution and changing architectural character.

When completed in 1914-15, the school featured a south-facing front with a 3-part composition and 1/1 vertical divisions or bays (Photo 8). The central section projected slightly from the main body of the front and featured a ground-floor, round-arched doorway, constituting the building's most distinctive architectural element (Photos 1, 2). With its large concrete keystone and impost, the archway featured stretcher-bonded brickwork that radiated outward, drawing attention to the building's primary entrance. Concrete steps led to the double-door entrance set within the arch. Sidelights and a fixed 3-light transom framed the paneled wood doors with glazing. Subdued detailing characterized the rest of the facade. Each of the outer sections of the first floor displayed five, double-hung windows with wood sashes and 4/4 lights, linked into 5-window sets by a brick string course below. Fenestration and detailing on the second floor mirrored that on the ground level, except that a pair of double-hung windows, instead of the arched entrance, occupied the central section. A corbeled brick string course marked the base of the parapet wall, capped by header-bonded brick coping. The central section that included the entrance featured a small pediment that was mildly suggestive of the Classical Revival style. The corners of the parapet had extensions where chimney flues were located.

The remaining sides of the building displayed smaller amounts of stylistic ornamentation and detailing. The east wall had no first-floor windows, although masonry work of the solid brick wall on the ground level incorporates a rectangular motif (Photos 2, 3). The second floor featured a set of two, double-hung windows toward the south side, identical to those on the front. A single-door exit, accessible by way of a wooden staircase, was placed near the northern edge of the east elevation. The brick parapet featured a corbeled brick string course and header-bonded coping that were continuations of similar elements on the facade. Architectural detailing on the west side closely resembled that of the east elevation, except that two rectangular motifs were incorporated in the brickwork of the first floor and four window openings were installed on the upper level (Photo 5). The rear wall was similar to the front; however, the double-door rear entrance was set within the plane of the exterior wall and was not inside a round arch, as seen on the front.

No historic photographs of the interior have yet been found, but former students have stated that the staircase began on the west side of the central hall and had a single landing before reaching the second floor (Map-21). Single doors opened from the hallway into the rooms on both levels. The floors were made of pine and the walls were plastered. The second floor reportedly was undivided and was used as an auditorium. A small stage occupied the northeast corner, near the fire exit.

United States Department of the Interior
National Park Service

National Register of Historic Places Continuation Sheet

Section 7 Page 7

Bedford School
Bedford, Tarrant County, Texas

Although the exterior remained virtually unaltered until the 1950s, the interior was changed sometime in the early 1950s when an office was partitioned within the first floor southwest classroom and the auditorium was partitioned into a classroom and bookroom, with a new stage built in the west side of the upper floor. Later, the east side classrooms on the first floor became additional offices.

In 1952, the building's first major addition (a cafeteria) was constructed on the west side of the school, although a small 1-story restroom addition had been built onto the rear a year earlier in 1951, according to former students (Map-22). Erected on a concrete slab foundation, the 1-story cafeteria featured a rectangular plan and steel-frame construction with a brick-veneer exterior. Its north and south walls were flush with those of the original school building. The addition's south (front) side featured a central, single-door entrance and a band of fixed windows across the wall. The west side had only a single-door entrance, while the rear (north) elevation had one door and two small window openings. The interior featured an open plan with no partitions but was later subdivided.

A classroom addition was built in 1954 on the east side of the school, and, like the cafeteria completed just two years earlier, it was only 1-story in height and featured steel-frame construction, brick-veneer walls and a flat roof. Detailing and fenestration, especially on the front, closely resembled comparable elements on the cafeteria; however, the smaller classroom addition did not extend as far back the original building (Map-22).

Yet another addition (a gymnasium) was constructed just two years later in 1956. It adjoined the east side of the cafeteria and was built on a rectangular-shaped concrete slab foundation (Map-22).

In 1958, more renovations were completed to "upgrade" the old school. Metal-sash windows replaced the wood sash windows, but because these standard size replacements required that the window openings be partially enclosed with brick to accommodate the new windows. Metal lintels were also installed at that time, as were metal I-beam floor trusses that provided additional structural support for the second story.

Except for the removal of the gymnasium after 1969, the Bedford School remained virtually unchanged until 1991 when a fire almost completely destroyed the school. The roof of the original building and portions of the second floor collapsed, and fire and water damage ravaged the interior. In 1992, the city implemented a rehabilitation plan in coordination with ArchiTexas, Hardy-Heck-Moore and the Texas Historical Commission to restore the 1914-15 appearance and adapt the school building for use as an interpretive museum. The fire damaged portions were rebuilt, following the Secretary of the Interior's Standards for Rehabilitation. Work on the building such as new wood frame windows and a new roof followed evidence the original configurations as closely as possible. Interior work restored the first floor to its original plan of four classrooms and a central hallway and staircase, with the second floor as auditorium and storage space (Map-23, 24). Period furniture and school-related exhibits decorate the hallway and classrooms (Photos 6, 7). The 1950s-era additions were

**United States Department of the Interior
National Park Service**

**National Register of Historic Places
Continuation Sheet**

Section 7 Page 8

Bedford School
Bedford, Tarrant County, Texas

removed, and a new, 2-story addition was added to the rear to meet building codes and accessibility requirements while limiting alterations to the original building as much as possible (Photos 4, 5). The addition features a rectangular plan that curves out slightly to the rear (north) to meet a flight of steps leading to the second floor entry (Map-23, 24). Also constructed of brick, the addition serves to provide necessary stair and elevator access to the second floor of the school building, while also providing storage and restroom facilities. An enclosed glass vestibule space visually distinguishes the old and new buildings and allows for minimal alterations to the rear of the school building. The original building obscures the slightly smaller addition from the south (front) elevation, therefore minimally affecting the historic appearance of the newly restored Bedford School, which retains its historic and architectural integrity to a high degree.

8. STATEMENT OF SIGNIFICANCE

APPLICABLE NATIONAL REGISTER CRITERIA

- A** PROPERTY IS ASSOCIATED WITH EVENTS THAT HAVE MADE A SIGNIFICANT CONTRIBUTION TO THE BROAD PATTERNS OF OUR HISTORY.
- B** PROPERTY IS ASSOCIATED WITH THE LIVES OF PERSONS SIGNIFICANT IN OUR PAST.
- C** PROPERTY EMBODIES THE DISTINCTIVE CHARACTERISTICS OF A TYPE, PERIOD, OR METHOD OF CONSTRUCTION OR REPRESENTS THE WORK OF A MASTER, OR POSSESSES HIGH ARTISTIC VALUE, OR REPRESENTS A SIGNIFICANT AND DISTINGUISHABLE ENTITY WHOSE COMPONENTS LACK INDIVIDUAL DISTINCTION.
- D** PROPERTY HAS YIELDED, OR IS LIKELY TO YIELD, INFORMATION IMPORTANT IN PREHISTORY OR HISTORY.

CRITERIA CONSIDERATIONS: N/A

AREAS OF SIGNIFICANCE: Education; Community Planning & Development

PERIOD OF SIGNIFICANCE: 1914 -- 1947

SIGNIFICANT DATES: 1914-15

SIGNIFICANT PERSON: N/A

CULTURAL AFFILIATION: N/A

ARCHITECT/BUILDER: Estill, C.C.; Estill, F.T.

NARRATIVE STATEMENT OF SIGNIFICANCE (see continuation sheets 8-9 through 8-16).

9. MAJOR BIBLIOGRAPHIC REFERENCES

BIBLIOGRAPHY (see continuation sheet 9-17 through 9-18).

PREVIOUS DOCUMENTATION ON FILE (NPS): N/A

- preliminary determination of individual listing (36 CFR 67) has been requested.
- previously listed in the National Register
- previously determined eligible by the National Register
- designated a National Historic Landmark
- recorded by Historic American Buildings Survey #
- recorded by Historic American Engineering Record #

PRIMARY LOCATION OF ADDITIONAL DATA:

- State historic preservation office (*Texas Historical Commission*)
- Other state agency
- Federal agency
- Local government
- University
- Other -- Specify Repository:

United States Department of the Interior
National Park Service

National Register of Historic Places
Continuation Sheet

Section 8 Page 9

Bedford School
Bedford, Tarrant County, Texas

STATEMENT OF SIGNIFICANCE

The 1914-15 Bedford School remains as one of the last surviving traces of the early Bedford community, serving as a tangible, physical link to an almost obliterated era in the history of northeast Tarrant County--an era from which few historic (pre-World War II) buildings now survive. Ever since its construction in 1914-15, the 2-story school functioned as an important physical, social, educational and cultural landmark within Bedford, once a small, dispersed community now rapidly becoming a booming suburb of Dallas and Fort Worth. The Bedford School represents the period of development in Bedford during the late 19th and early 20th centuries when citizens regarded the school as the centerpiece of the rural, unincorporated community. The school is also indicative of the early 20th century efforts by small settlements to improve public educational opportunities within their respective communities. For its role in the development of education in Bedford during the early 20th century, the Bedford School meets Criterion A at the local level of significance in the areas of Education and Community Planning and Development.

The Bedford School and Its Association with the Community of Bedford

Although permanent Anglo-American settlement in Tarrant County began as early as 1841, the area that includes most of present-day Bedford remained unsettled until 1855 when Samuel Cecil Holiday (S.C.H.) Witten arrived. He initially worked as a surveyor for the Peters' Colony--a large, private, land-development operation that introduced over 2,000 families to Texas in territory that encompassed more than 16,000 square miles, including all of what later became Tarrant County, as well as all or parts of many other counties in north-central Texas (Pool 1975:61). After purchasing the 320-acre Joseph Screech Survey in 1857, Witten and his family built a house and established a farm near present-day Colleyville. Other families soon followed, forming a loose-knit farming community that prevailed well into the 20th century. Milton Moore, a native of North Carolina, was one such pioneer; after visiting northeast Tarrant County in 1860, he decided to permanently relocate from his adopted home of Missouri. Upon his return in 1861, he selected an unclaimed parcel of land later designated the Milton Moore Survey, the future site of the Bedford School (Map-25).

The education of the children constituted an important priority to these early settlers. Milton Moore established a small school for a few children in a log cabin on his property in 1861, but, along with other neighbors, decided to build a larger school for the fledgling community in 1865. Using lumber obtained by S.C.H. Witten from the pine mills at Jefferson, Texas, a new schoolhouse was erected on the southeast corner of the D.B. Teeter Survey, within the current (1992) city limits of Colleyville. Local citizens named the new building Spring Garden School, in honor of the Missouri County where Witten, Moore and others in the area lived previously. The building, in addition to serving as a school, became the centerpiece for the town's social and religious activities. Members of the Spring Garden Church of Christ, for example, worshipped in the

**United States Department of the Interior
National Park Service**

**National Register of Historic Places
Continuation Sheet**

Section 8 Page 10

Bedford School
Bedford, Tarrant County, Texas

building on Sundays. The life of the town centered around the school so much that the community itself soon became known as Spring Garden (Patterson, 1981).

The school remained the focal point of the community, which continued to grow at a slow but steady pace. Many of the new settlers were Southerners who came seeking fresh opportunities following the Civil War. The Spring Garden school burned in 1872, however, leaving students without classrooms and churchgoers without a place to worship. Although rebuilt and continuing to serve nearby residents until its abandonment six years later, those families in the southern portion of the loosely defined Spring Garden rural community decided to establish a new school about 1 1/2 miles south.

The need for the new school reflected a southern shift in settlement and demographic patterns, and the Spring Garden School was no longer in a central location for many families in the area. Easy access to schools became a critical concern for parents because the poor road network made the transportation of both people and goods a difficult, arduous task.

The new school met in a building recently completed for the New Hope Church of Christ, itself an offshoot of another Spring Garden institution, the Spring Garden Church of Christ. Their house of worship was built on a small tract of land that Milton Moore had conveyed to the congregation. The church building stood near Weldon Wiles Bobo's store, which, along with the school, formed the nucleus of what soon became known as the Bedford community.

Local historians regard W.W. Bobo as the founding father of Bedford. Arriving in Texas in 1870, Bobo established a store that he initially intended as a resting and shopping place for travelers, but which he expanded as more families relocated nearby. The influx of new residents by 1877 prompted Bobo to petition the federal government to open a post office, which he operated out of the front section of his residence. The official name given to the post office was Bedford, after Bobo's native Bedford County, Tennessee--also the home of several other area settlers. Besides operating a store and serving as postmaster, Bobo also established a grist mill and gin that catered to the needs of area farmers.

Another early and important landmark in the Bedford community was the cemetery, set on a hillside near the New Hope Church of Christ. The oldest marked grave is that of W.W. Bobo's five-year-old daughter, who died in 1871. The cemetery may have been in use even before that time, according to Micheal Patterson, a local historian who studied the historical development of Bedford and surrounding areas. Referring to a manuscript written by the son of Milton Moore, Patterson notes that twelve families arrived in the Bedford area before 1861, the year of the Moore family's settlement, and that many of these early pioneers possibly are buried in unmarked graves in Bedford Cemetery. Prominent Tarrant County settlers interred in the cemetery include Milton Moore and William L. Hurst, for whom the nearby city of Hurst is named.

**United States Department of the Interior
National Park Service**

**National Register of Historic Places
Continuation Sheet**

Section 8 Page 11

Bedford School
Bedford, Tarrant County, Texas

Agriculture remained the foundation of the local economy during the 1860s and 1870s, but limited acreage of tillable land and the poor transportation network impeded large-scale agricultural production, so most families remained confined principally to subsistence farming. The presence of Bobo's gin revealed the growing of cotton in the area, but farmers also cultivated other crops, such as corn. Only with the improvement of local roads and the arrival of rail service into the region did area farmers begin to cultivate cash crops on a profitable basis. An 1889 U.S.G.S. map of Tarrant County shows that few public roads extended through the area (Map-26; Note: this map was reprinted in 1949 and post-1889 changes, such as the construction of two railroads in the region, were indicated).

One of the most important events in Bedford's history occurred in 1882 when Bedford College was officially established. Local residents created and funded this private institution to provide opportunities for more advanced learning. Although the word "college" today denotes post-high school education, a "college" at that time was roughly equivalent to high school-level studies. The college offered geometry, Latin, algebra and other subjects not taught in the public schools. Milton Moore provided land for the college, showing further evidence of his extended commitment to education in the community. He conveyed a 4-acre parcel of land on the southern boundary of the Moore Survey (on which the Bedford School was subsequently built), and he also served as one of the directors of the College. The deed record noting the transaction also revealed other directors, including J.H. Smithers, W.D. Trimble, John Mahan and B.J. Valentine (Tarrant County Deed Records, Volume Z, page 312-13). Glenn M. Holden, in his history of early education in Tarrant County, noted that a Mr. Bondurant was contractor of the 2-story building, which was used by both Bedford College and the existing public school (Holden 1931:42). A historic photograph of the building shows it to be a 2-story frame structure with a hipped roof. A 1-story wing extended from the rear (Tarrant County Junior College, Northeast Campus, Historic Photographic Collection).

During its brief existence, Bedford College was the pride of the community, operating successfully for about twelve years, though it was only one of several such institutions in the region (another was Grapevine College in nearby Grapevine). About 1890, Bedford College became part of the public school system (Bedford Common School District No. 33), continuing operations until 1892 or 1893 when fire destroyed the building. Rather than rebuild the building, directors of the College decided to abandon the institution, since its location in a sparsely populated area of northeast Tarrant County made the school's financial standing tenuous. The public school, which also shared the building with the College, then moved temporarily to the New Hope Church of Christ before relocating to a wood-frame building that constructed about 1898 on the site of Bedford College.

The construction of tracks for the St. Louis & Southwestern (Cotton Belt) Railroad in 1888 signaled the beginning of a new era in Bedford's history. Though the railroad bypassed Bedford, choosing instead to extend its line through nearby Grapevine, the entire region's economy was boosted, since rail provided virtually unlimited new markets for farmers' agricultural products. The 1903 decision of the Burlington and Great Northern (Rock Island) Railroad to also bypass Bedford for Arlington further relegated the community to a

**United States Department of the Interior
National Park Service**

**National Register of Historic Places
Continuation Sheet**

Section 8 Page 12

Bedford School
Bedford, Tarrant County, Texas

tertiary position within the county. The construction of these railroads capped any hopes that Bedford residents may have had about becoming a larger, formally organized township. Still another blow came in 1905 when a highway linking Dallas and Fort Worth was built through the area, extending through Arlington and Grand Prairie, but not Bedford. This succession of occurrences did little to stimulate growth in Bedford, and in 1909 the local post office was closed. Bedford's population dwindled to an estimated 50 residents.

Despite such setbacks, residents maintained a strong sense of optimism and pride in their community, and in 1914 taxpaying citizens of the Bedford Common School District voted overwhelmingly to issue bonds to finance the construction of a new school on the former site of the Bedford College. When completed the following year, the 2-story brick school was an imposing physical landmark in the community that remained so for over a half century.

In subsequent years, Bedford retained its dispersed, rural character and most of its residents were truck farmers who grew a variety of fruits and vegetables. The Bedford School remained the focal point of the community, and other than the improvements in nearby roads, relatively few physical changes took place until the 1940s. The era of most profound change in Bedford occurred during and immediately following World War II. Indeed, the new military bases and defense contractors which established themselves in Tarrant County during the mid-20th century triggered explosive growth in Bedford and the surrounding areas which came to be called the "Mid-Cities." The town of Bedford was incorporated in 1953, at which time the population stood at 475. Seven years later, in 1960, the city increased its size by a factor of five, and the population skyrocketed to over 2,500. The census of 1980 counted over 23,000 citizens in Bedford (Page, Anderson, & Turnbull, 1983). Today, the city is considered a large, residential suburb for commuters from Fort Worth and Dallas.

This new growth may have revived Bedford, but it profoundly changed the community's physical appearance and rural character. Practically all physical evidence of Bedford's early years has been either removed or destroyed. Only a very few buildings survive from Bedford's historic (pre-World War 11) architecture.

The Bedford School and Its Role in the History of Early 20th Century Education in Bedford and Northeast Tarrant County

Besides its strong association with the historical development of Bedford, the Bedford School is representative of the history of education in northeast Tarrant County, built at a time when many of the common school districts in Tarrant County were building new schools for their children. Although almost all of these rural schools have since been demolished and/or replaced with more modern buildings, the Bedford School remains one of few tangible, extant links to this important aspect of local history. Moreover, it is one of the oldest rural schools in the county, indicative of the type of schools that many Tarrant County citizens attended in the early 20th century.

**United States Department of the Interior
National Park Service**

**National Register of Historic Places
Continuation Sheet**

Section 8 Page 13

Bedford School
Bedford, Tarrant County, Texas

The Bedford School was built to serve the Bedford Common School District No.33, one of 84 such entities organized by the Commissioners' Court of Tarrant County in 1884. The Commissioners partitioned all areas of the county into common school districts, allocating authority over their operation to both the county government and locally elected school trustees (Map-27). The county school superintendent oversaw educational efforts on behalf of the commissioners, court and acted as a liaison between the common school districts and the State Board of Education.

During the late 19th and very early 20th centuries, most of the schools in the common school districts of Tarrant County consisted of small 1-story buildings that were poorly constructed and maintained. Lack of funding, either from the state, county or common school district, prohibited the construction of substantial well-built schools. The Tarrant County Superintendent of Schools reported this trend in his annual reports to the State Board of Education from 1899 to 1911, the final year such records were reported to the State (Table 1).

Table 1
Annual Summary Reports of the Tarrant County Superintendent of Schools

Year	No. of Wood-Frame Schools	No. of Brick Schools	No. of Stone Schools	Total No. of Schools	No. of Schools Built that Year
1899	93	1	0	94	2
1900	88	2	0	90	4
1901	78	0	1	79	2
1902	87	1	0	88	1
1904	86	1	0	87	1
1905	88	1	0	89	5
1906	90	1	0	91	6
1907	82	2	0	84	1
1908	72	0	0	72	3
1909	79	0	0	79	3
1911	69	1	0	71	2

By the early 20th century, however, many residents in the common school districts had attained a greater level of prosperity and voluntarily elected to raise their own taxes to assure that their children would have better schools. Typically, residents would petition the County Commissioners' Court to hold a bond election for the issuance of "Schoolhouse Bonds." If the majority of property-owning citizens voted in favor of the program, the Court authorized the issuance of the bonds which would generate the necessary funds for the construction of

**United States Department of the Interior
National Park Service**

**National Register of Historic Places
Continuation Sheet**

Section 8 Page 14

Bedford School
Bedford, Tarrant County, Texas

a new school. Property taxes were raised to pay off the bonds. The first such effort was probably in Hurst and others soon followed (see Table 2 -- note: the lower values, e.g. at or below \$2,000.00 were probably of-wood-frame construction, while greater values probably were for masonry buildings).

Table 2
Schoolbonds Passed in Tarrant County During Early 1910s

Year Bonds Approved	Common School District Name	District No.	Aggregate Total of Bonds
1910	Little	54	\$1,500.00
1910	Rendon	68	\$1,000.00
1912	Benbrook	58	\$6,000.00
1912	Hurst	94	\$6,000.00
1913	South Fort Worth	57	\$35,000.00
1913	Euless	95	\$7,000.00
1913	Minter	30	\$2,000.00
1913	Van Zandt	91	\$13,500.00
1913	Saginaw	87	\$10,000.00
1913	Johnson Station	52	\$6,500.00
1913	Pleasant Run	28	\$4,300.00
1913	Azle	18	\$8,000.00
1913	Grace Chapel	96	\$3,000.00
1914	Bedford	33	\$5,000.00

The Bedford Common School District was among the leaders in this movement in Tarrant County, and on June 29, 1914, a petition signed by 29 residents of the district was presented to the Commissioners' Court requesting that an election be held " ... to determine whether a majority of the legally qualified property taxpaying voters of said district desire the issuance of bonds ... to provide funds to be expended in payment of accounts legally contracted in constructing and equipping a public free school building of brick, concrete or stone material." The Commissioners' Court granted their request, and on August 1, 1914, an election was held. The final tally included 28 votes for issuance of the bonds and 2 against. The nearly unanimous support for the construction of the school bonds demonstrated the deep and sincere commitment of the residents toward public education. On August 10, 1914, the Commissioners' court approved the issuance of the ten \$500 bonds, with a total value of \$5,000. Milton Moore, who earlier played a pivotal role in the creation of Bedford College and

**United States Department of the Interior
National Park Service**

**National Register of Historic Places
Continuation Sheet**

Section 8 Page 15

Bedford School
Bedford, Tarrant County, Texas

other public schools in the area, conveyed a 4-acre tract of land formerly owned by the Bedford College) to the County for the site of the new school (Tarrant County Deed Records, Volume 134, page 40).

Construction probably began sometime that year; an exact date is unknown despite a review of Commissioners' Courts records (minutes, contract files and disbursements of funds). The dedication stone, still visible near the base at the southeast corner of the old building, reveals C.C. Estill and F.T. Estill to be contractors of the school with H.C. Spencer, W.R. Fitch and H.E. Valentine as trustees. A c. 1915 photograph of the school shows five men standing in the doorway, thought to be these five men. The building must have been completed by July 6, 1915, since the Commissioners' Courts Minutes of that date noted that "... the trustees of the Bedford Common School District No. 33 be and are hereby authorized to sell [the] old school building in said district to the highest bidder for cash or credit or part cash and part credit" (Tarrant County Commissioners' Court Minutes, Volume 24, page 174). The fate of the old school building, whether razed, dismantled or moved, is not known, as a deed record was not found in the office of the County Clerk.

Charles Carmichael Estill and his son Frank Thomas Estill, noted on the dedication stone as contractors for the school, were builders and owners of a lumberyard and building supply company in Grapevine. C.C. Estill (born ca. 1852), a Tennessee native who arrived in Tarrant County as a child, was raised on a farm outside Grapevine. About 1887, he opened a lumber company in Grapevine and, along with his son Frank T. (one of six children), was responsible for the construction of numerous institutional and residential buildings in the northeast Tarrant County area (Tarrant County Mechanic's Liens Indexes). Offices for the C.C. Estill Lumber Company originally occupied a ca. 1887 building on Main Street in Grapevine. This building, since moved to the corner of Highways 121 and 157, is today considered the oldest commercial building in Grapevine. Frank Estill, a farmer and County Commissioner, also worked frequently with his father on construction projects (Young, 1979). His ca. 1905 house, located at 121 E. College Street in Grapevine, also survives today. The Estills erected other educational facilities besides the Bedford School, including the 2-story schoolhouse built in 1912 in Pleasant Run and the ca. 1919, 1-story, brick, Carroll School on Carroll Avenue in Southlake, which survives today as a warehouse and art studio (Page, Anderson, & Turnbull, 1983). The Estills were possibly responsible for the construction of the Euless School, which also bears a strong resemblance to the Bedford School.

The Bedford School's first staff consisted of three trustees, a principal who also taught classes, and four other teachers. Classification by the Tarrant County Board of County School Trustees was based upon the number of teachers employed. During the 1919-20 school year, for example, the Bedford School had three teachers, and was thus considered an Eight Grade School. Up until World War II, the school fluctuated between being an Eight, Nine, or Ten Grade school. The number of teachers employed was a function of the size of the community, which in the early- to mid-20th century was relatively small. Helvey notes that an estimated forty people lived in the Bedford community in 1924 (Helvey, 1981).

**United States Department of the Interior
National Park Service**

**National Register of Historic Places
Continuation Sheet**

Section 8 Page 16

Bedford School
Bedford, Tarrant County, Texas

The community undertook minor expansions of the school during the 1920s. In 1929, for example, C.E. Holden conveyed a 2-acre parcel of land behind the building to the thus enlarging the playground area (Tarrant County Deed Records Volume 1063, page 134). Most new construction, however, occurred following the explosion of Bedford's population during and after the war. A series of bond elections passed during the 1950s resulted in the construction of three additions and the remodeling of the school. A petition was presented to the Commissioners' Court on May 12, 1952, initiated the first such renovation effort. Following a near unanimous vote on May 24, 1952, the Court authorized the issuance of bonds totaling \$12,000 (Tarrant County School Board Minutes Volume 1, page 475, 481, 483). Funds from the sale of these bonds were used to construct a cafeteria on the west side of the building. Other bond elections were passed in 1954, 1956 and 1958, resulting in the construction of an additional classroom to the east and a gymnasium to the west. The school oversaw other improvements during this period of rapid growth: yearbooks began to be printed in 1950, for example, and the school sponsored extracurricular activities such as athletic events, spelling bees, and writing contests. On November 1, 1958, a narrow vote (212-189) by Bedford citizens led to the annexation of the Bedford Common School District by the Hurst-Eules Independent School District, thus creating the Hurst-Eules-Bedford Independent School District. The consolidation allied Bedford with nearby cities with similar populations, allowing the smaller communities to remain relatively independent and separate from the huge school districts of Fort Worth and Arlington. The consolidation also reflected Bedford's emergence as one of the "mid-cities" within the Dallas-Fort Worth Metroplex.

The Bedford School served the community's educational needs until 1969, when the Hurst-Eules-Bedford Independent School District closed the facility, believing it too small, and relocated students to the new Bell Manor Elementary nearby. The school district used the building as a garage and warehouse until 1973 when the Bedford School and the surrounding thirteen acres were sold to the City of Bedford for \$72,000 (Tarrant County Deed Records Volume 5523, page 829). The building served as a maintenance warehouse for the city until a fire ravaged the building in 1991, leaving only a fragment of the original building intact.

Surrounded by a residential subdivision and small businesses, the school remains one of only a handful of tangible links to the early days of Bedford. According to survey results by Page, Anderson & Turnbull for the Historic Preservation Council of Tarrant County, the Bedford School is one of less than a dozen surviving schoolhouses from the county's historically rural areas (others include the Estill's Carroll School in Southlake, and the 1924 Old Mansfield High School in Mansfield). The completion of a rehabilitation project in 1996 restored the building to its original (1914-15) appearance and adapted it for use as an interpretative museum that provides information about Bedford's early history and depicts early- and mid-20th century school life in rural northeast Tarrant County. As such, the Bedford School continues to play an important role in the community life of Bedford.

United States Department of the Interior
National Park Service

National Register of Historic Places
Continuation Sheet

Section 9 Page 17

Bedford School
Bedford, Tarrant County, Texas

BIBLIOGRAPHY

- Bell Manor Elementary. Scrapbook excerpts. Undated and unsigned.
- Eby, Frederick. *The Development of Education in Texas*. New York: McMillan Co., 1925.
- Grapevine Sun*. Various issues. On file at the Grapevine Public Library, Grapevine, Texas.
- Helvey, Patricia. "Bedford School." Unpublished document on file at the Heritage Room, Library of Tarrant County Junior College, Northeast Campus, Hurst, Texas.
- Holden, Glenn M. *A Partial History of Early Education in Tarrant County*. Unpublished Master's Thesis. Fort Worth: Texas Christian University, 1931.
- Page, Anderson & Turnbull, Inc. *Tarrant County Historic Resources Survey: Phase II. Bedford, Colleyville, Euless, Hurst, Keller, North Richland Hills, Southlake, Watauga, Westlake. Principal Findings and Resources Characteristics*. Fort Worth: Historic Preservation Council for Tarrant County, Texas, 1983.
- Pool, William C. *A Historical Atlas of Texas*. Austin: The Encino Press, 1975.
- Sam Street's Map of Tarrant County. 1895. On file at the Heritage Room, Library of Tarrant County Junior College, Northeast Campus, Hurst, Texas.
- Sargeant, George William. *Early History of Tarrant County*. Unpublished Master's Thesis. Austin: University of Texas, 1953.
- Tarrant County Commissioners Court. *Minutes of the Commissioners Court*. On file at the Tarrant County Commissioners Court, Fort Worth, Texas.
- Tarrant County Deed Records*. Tarrant County Courthouse, Fort Worth, Texas.
- Tarrant County Junior College, Northeast Campus, Library, Heritage Room. Historic Photograph Collection (various). Hurst, Texas.
- Tarrant County Junior College, Northeast Campus, Library, Heritage Room. Vertical Files (various). Hurst, Texas.
- Tarrant County Mechanic's Liens Records*. Tarrant County Courthouse, Fort Worth, Texas.

United States Department of the Interior
National Park Service

National Register of Historic Places
Continuation Sheet

Section 9 Page 18

Bedford School
Bedford, Tarrant County, Texas

Tarrant County School Board. *Minutes of the Tarrant County School Board*. On file at the library at University of Texas at Arlington, Special Collections.

Tarrant County School Board. *Minutes of the Tarrant County School Board, Volumes 1 and 2*. On file at the Tarrant County Commissioners Court, Tarrant County Courthouse, Fort Worth, Texas.

Tarrant County School Board. *School Fund Register, Tarrant County, Texas*. On file at the library at University of Texas at Arlington, Special Collections.

Tarrant County Superintendent of Schools. *Annual Report for the Year Beginning September 1, 1907 and Ending August 31, 1908*. On file at the State Archives, Austin, Texas.

Tarrant County Superintendent of Schools. *Summary of Annual Reports 1898 to 1911*. On file at the State Archives, Austin, Texas.

Texas Department of Highways. *Tarrant County General Highway Map, 1936*.

Texas Historical Commission Marker Files.

"Bedford Cemetery." by Michael E. Patterson.

"Bedford Church of Christ." by Michael E. Patterson.

"Bedford School." by Patricia Helvey.

"Site of Glassco School." by Michael E. Patterson.

"Spring Garden Community." by Michael E. Patterson.

"Spring Garden School." by Michael E. Patterson.

Young, Charles H., editor. *Grapevine Area History*. A publication of the Grapevine Historical Society. Dallas: Taylor Publishing Co., 1979.

10. GEOGRAPHICAL DATA

ACREAGE OF PROPERTY: approximately 6.2 acres

UTM REFERENCES Zone Easting Northing
 1 14 673080 3635560

VERBAL BOUNDARY DESCRIPTION (see continuation sheet 10-19)

BOUNDARY JUSTIFICATION (see continuation sheet 10-19)

11. FORM PREPARED BY (with assistance from Mary Dillman, THC Historian)

NAME/TITLE: David Moore/Project Director Historian; Matt Goebel/Research Assistant

ORGANIZATION: Hardy-Heck-Moore

DATE: March 1992/April 1997

STREET & NUMBER: 1414 W. 6th Street

TELEPHONE: 512-478-8014

CITY OR TOWN: Austin

STATE: TX

ZIP CODE: 78703

ADDITIONAL DOCUMENTATION

CONTINUATION SHEETS

MAPS (see continuation sheet Map-20 through Map-27)

PHOTOGRAPHS (see continuation sheet Photo-28)

ADDITIONAL ITEMS

PROPERTY OWNER

NAME: Mayor Richard D. Hart, City of Bedford

STREET & NUMBER: P.O. Box 157

TELEPHONE: 817-952-2100

CITY OR TOWN: Bedford

STATE: TX

ZIP CODE: 76095-0157

United States Department of the Interior
National Park Service

National Register of Historic Places Continuation Sheet

Section 10 Page 19

Bedford School
Bedford, Tarrant County, Texas

VERBAL BOUNDARY DESCRIPTION

Situated in the City of Bedford, Tarrant County, Texas and being a parcel of land out of the Milton Moore Survey, Abstract No: 1105, said parcel being the remaining portion of a tract of land conveyed to the City of Bedford by deed as recorded in Volume 5523, Page 829 of the Deed Records of Tarrant County, Texas, containing 5.1978 acres of land, more or less AND the 1.1 acre site adjoining the school property to the south and fronting Bedford Road as recorded in Volume 388-109, Page 111 as Lots 1 thru 4, Bedford College Addition, Bedford, Tarrant County, Texas.

BOUNDARY JUSTIFICATION

The boundaries include the parcel of land conveyed by Milton Moore to Tarrant County in for the purposes of maintaining a school and contain all resources associated with the 1914-15 school that retain their historic and architectural integrity.

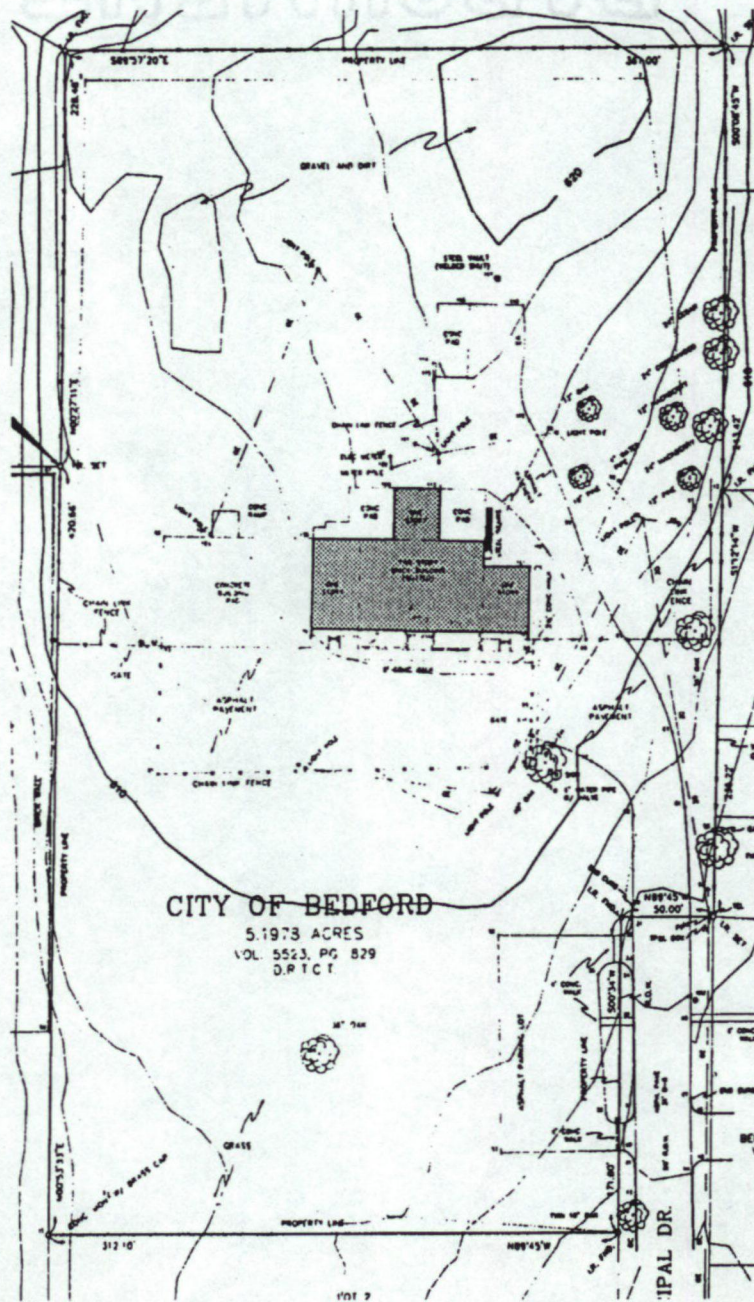
United States Department of the Interior
National Park Service

National Register of Historic Places
Continuation Sheet

Section MAP Page 20

Bedford School
Bedford, Tarrant County, Texas

SITE PLAN (PRIOR TO 1996 REHABILITATION)



CITY OF BEDFORD

5.1973 ACRES
VOL. 5523, PG. 829
D.P.T.C.T.

↑
NORTH
NOT TO SCALE

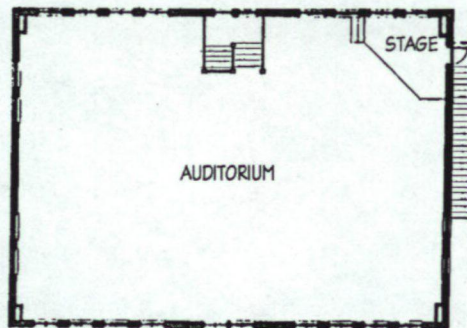
United States Department of the Interior
National Park Service

National Register of Historic Places Continuation Sheet

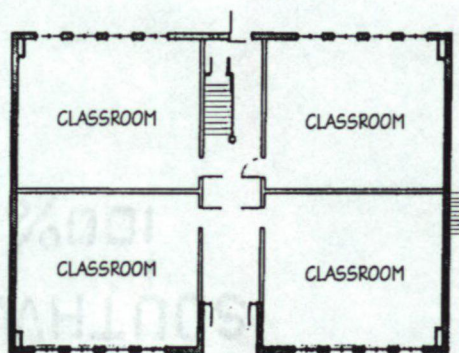
Section MAP Page 21

Bedford School
Bedford, Tarrant County, Texas

1914-15 FLOOR PLAN



UPPER LEVEL



LOWER LEVEL



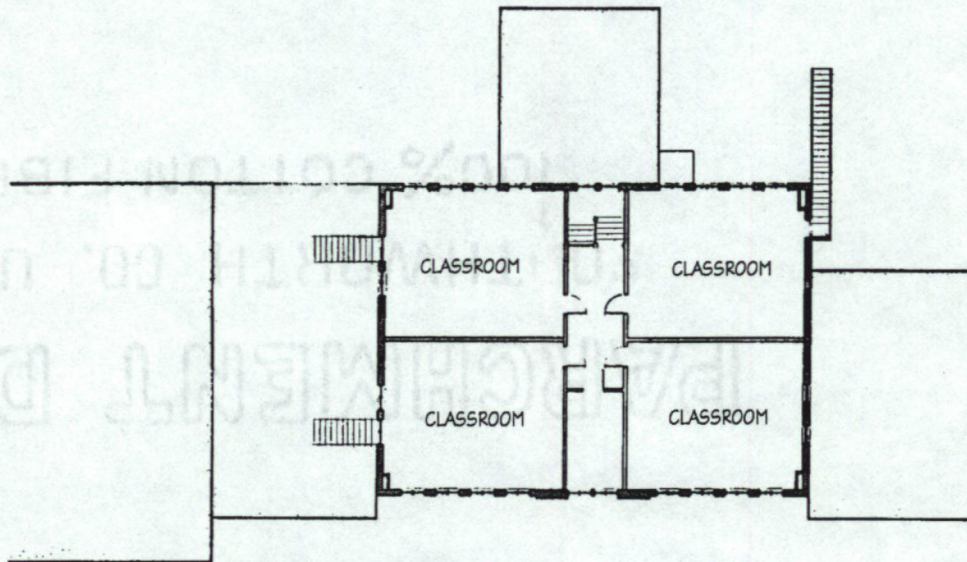
United States Department of the Interior
National Park Service

National Register of Historic Places Continuation Sheet

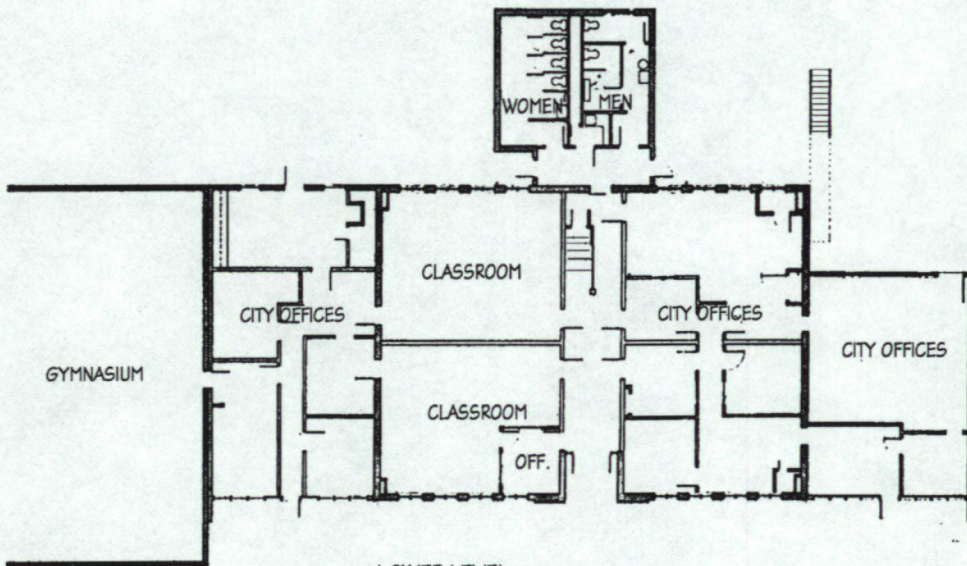
Section MAP Page 22

Bedford School
Bedford, Tarrant County, Texas

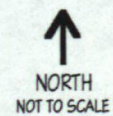
1956-58 FLOOR PLAN



UPPER LEVEL



LOWER LEVEL



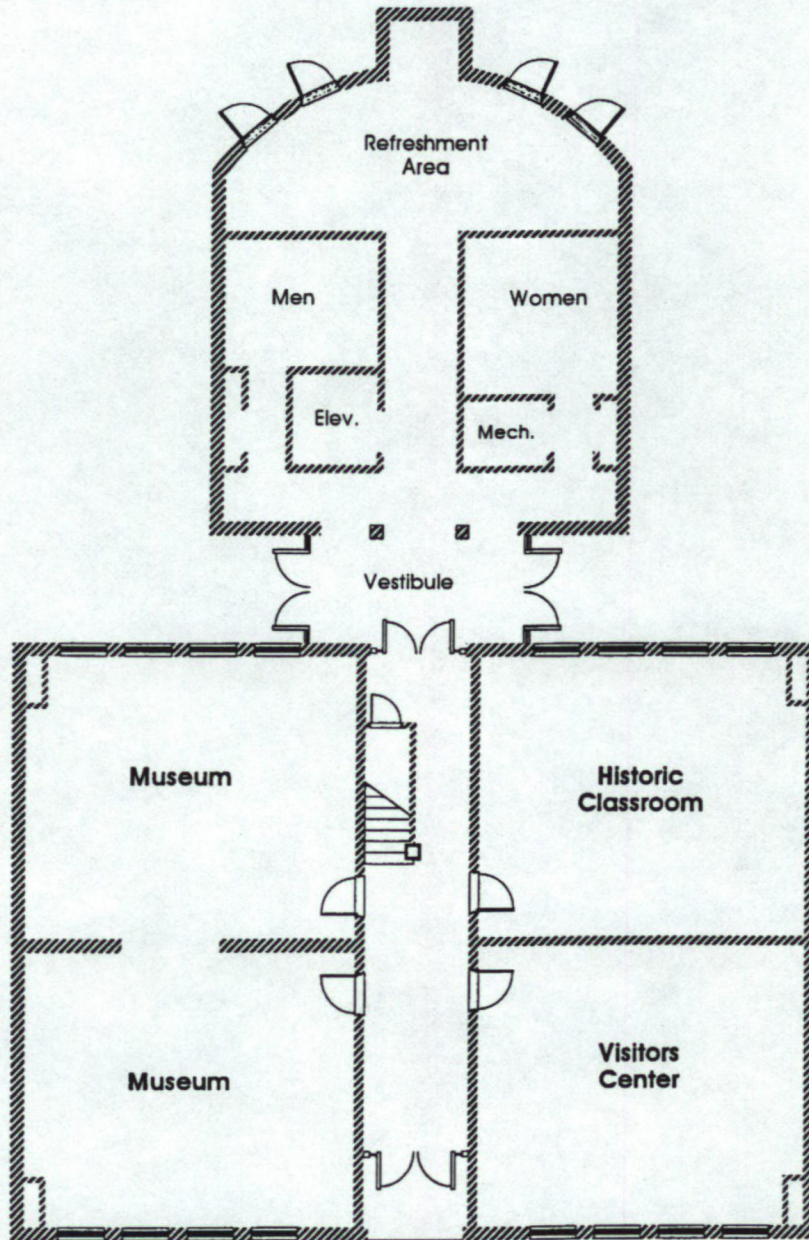
United States Department of the Interior
National Park Service

National Register of Historic Places Continuation Sheet

Section MAP Page 23

Bedford School
Bedford, Tarrant County, Texas

CURRENT FIRST FLOOR PLAN



↑
NORTH
NOT TO SCALE

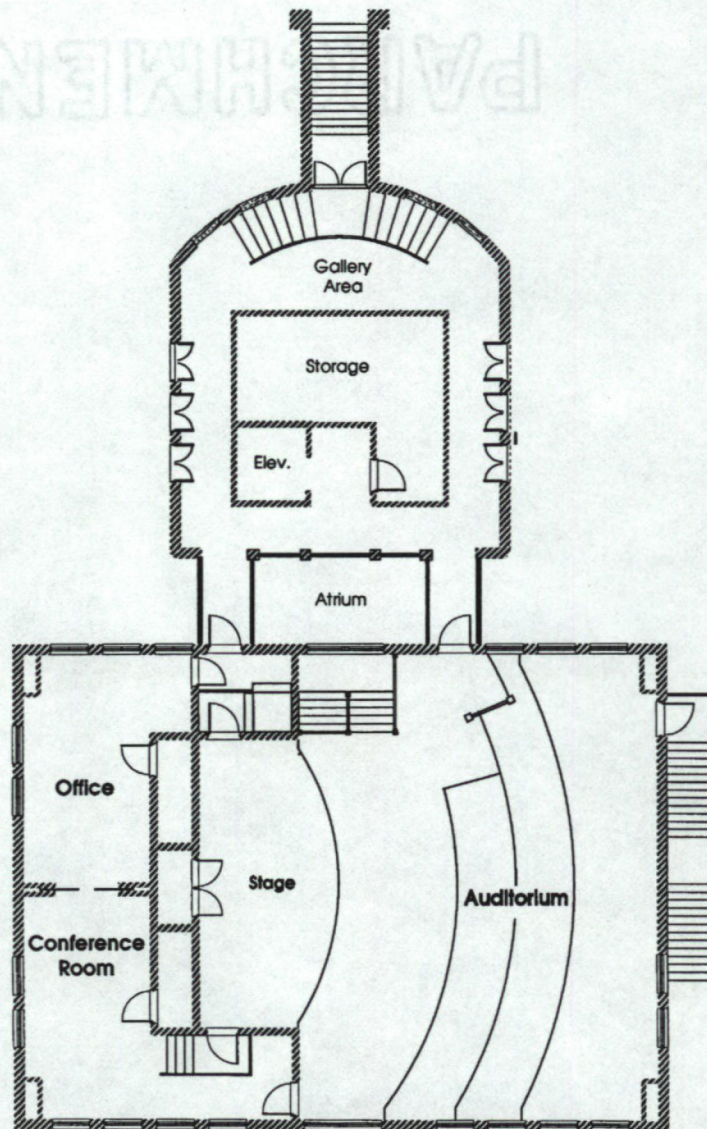
United States Department of the Interior
National Park Service

National Register of Historic Places Continuation Sheet

Section MAP Page 24

Bedford School
Bedford, Tarrant County, Texas

CURRENT SECOND FLOOR PLAN



↑
NORTH
NOT TO SCALE

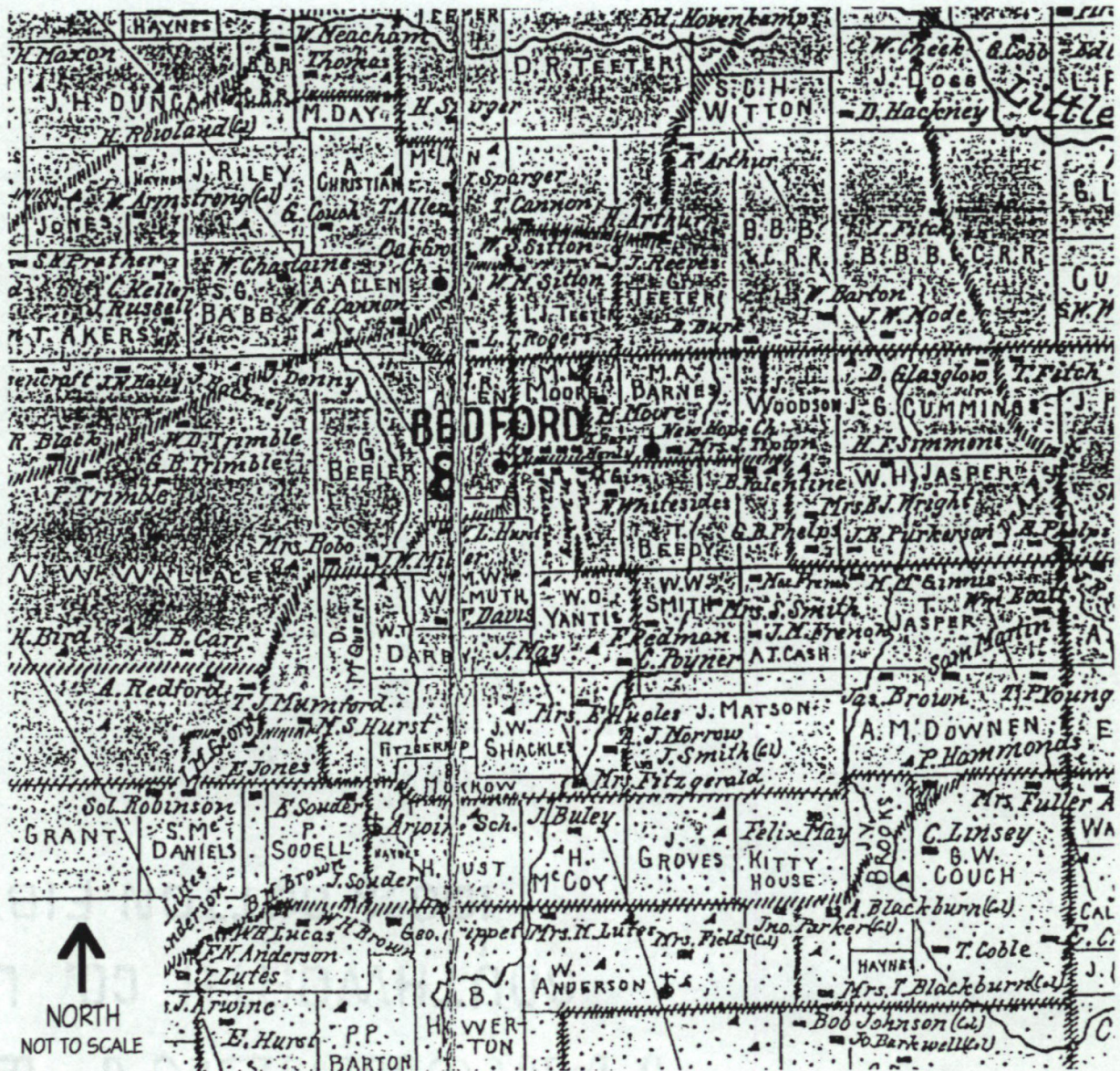
United States Department of the Interior
National Park Service

National Register of Historic Places
Continuation Sheet

Section MAP Page 25

Bedford School
Bedford, Tarrant County, Texas

BEDFORD SURVEY MAP (C. 1861)



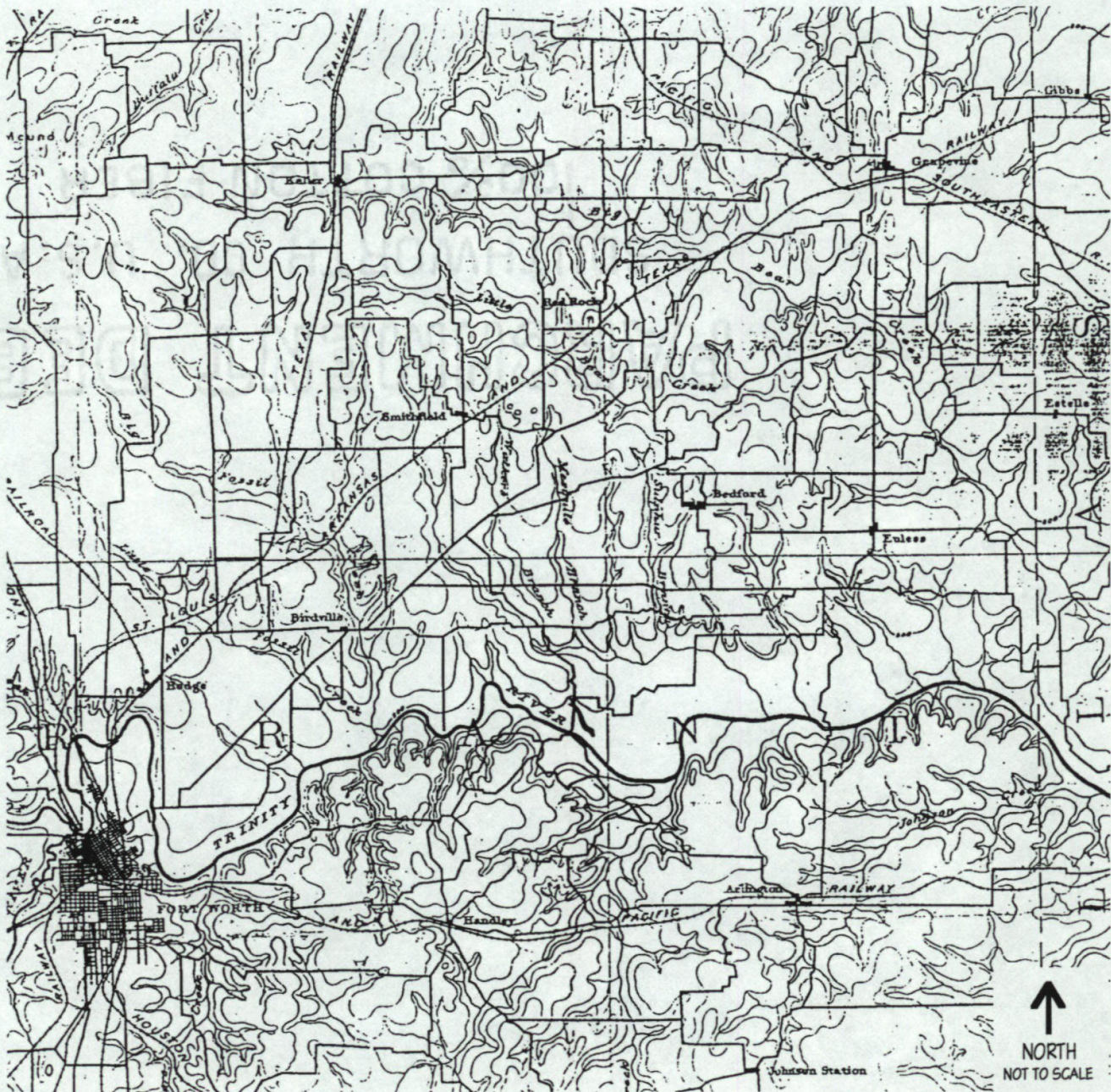
United States Department of the Interior
National Park Service

National Register of Historic Places Continuation Sheet

Section MAP Page 26

Bedford School
Bedford, Tarrant County, Texas

1889 USGS MAP



United States Department of the Interior
National Park Service

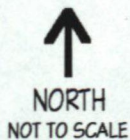
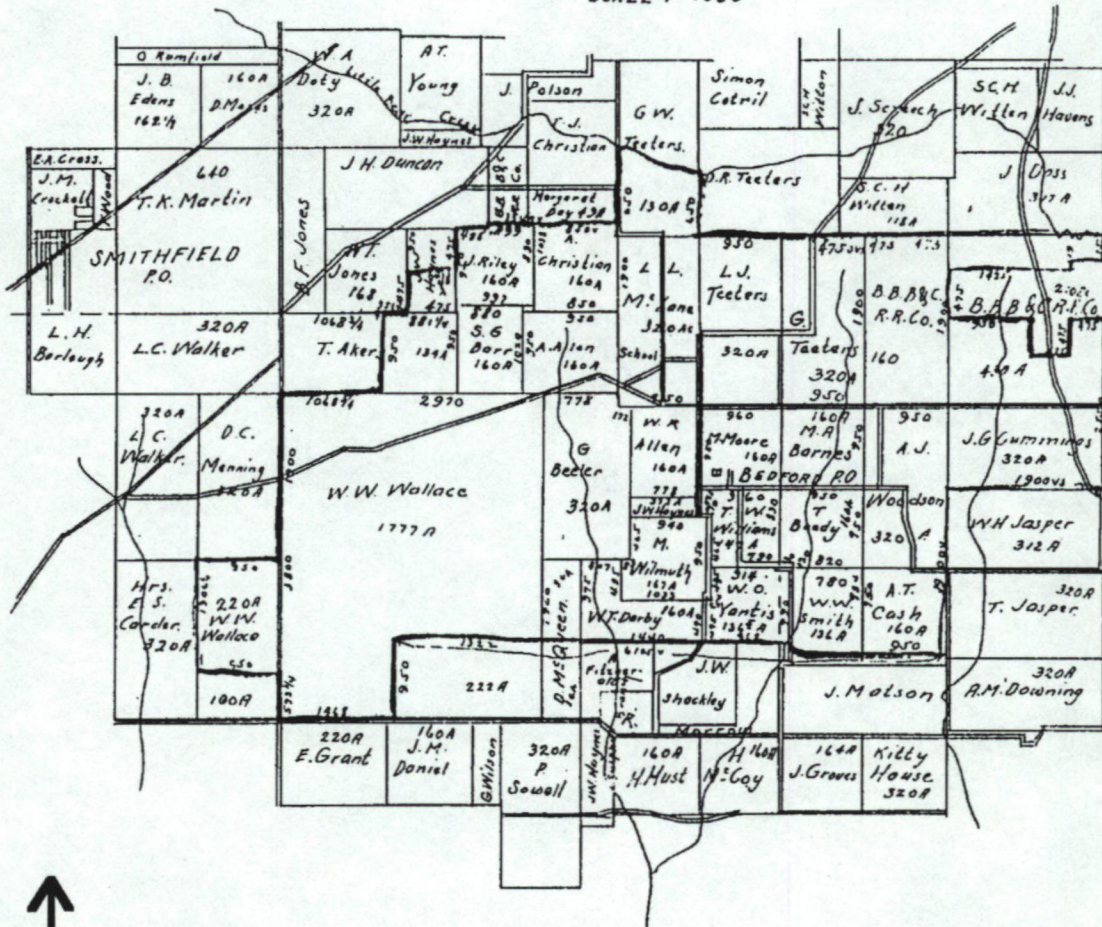
National Register of Historic Places
Continuation Sheet

Section MAP Page 27

Bedford School
Bedford, Tarrant County, Texas

1914 SCHOOL DISTRICT PLAT MAP

PLAT OF
COMMON SCHOOL DISTRICT No. 33.
TARRANT COUNTY TEXAS CONTAINING 6795.2 ACRES OR 10.6¹ SQUARE MILES.
SCALE 1"=1000



United States Department of the Interior
National Park Service

National Register of Historic Places
Continuation Sheet

Section PHOTOS Page 28

Bedford School
Bedford, Tarrant County, Texas

PHOTO LOG

Bedford School

2400 School Lane

Bedford, Tarrant County, Texas

All photographs taken by Byron Zirkle, April 1997

Location of negatives: Libby Buuck, Managing Director, Old Bedford School
P.O. Box 157, Bedford, TX 76095

- Photo 1 of 8 South (front) elevation
Camera facing north
- Photo 2 of 8 Southeast elevation
Camera facing northwest
- Photo 3 of 8 East elevation, showing fire escape and addition
Camera facing west
- Photo 4 of 8 North elevation, showing addition
Camera facing south
- Photo 5 of 8 West elevation, showing addition and glass walkway
Camera facing east
- Photo 6 of 8 First floor hallway, showing doors to classrooms, stairway to upstairs auditorium and
northern door addition
Camera facing north
- Photo 7 of 8 Northeast classroom
Camera facing northeast
- Photo 8 of 8 Historic Photo, c. 1915
Southeast elevation
Camera facing northwest
Photographer unknown

UNITED STATES DEPARTMENT OF THE INTERIOR
NATIONAL PARK SERVICE

NATIONAL REGISTER OF HISTORIC PLACES
EVALUATION/RETURN SHEET

REQUESTED ACTION: NOMINATION

PROPERTY NAME: Bedford School

MULTIPLE NAME:

STATE & COUNTY: TEXAS, Tarrant

DATE RECEIVED: 7/01/97 DATE OF PENDING LIST: 7/16/97
DATE OF 16TH DAY: 8/01/97 DATE OF 45TH DAY: 8/15/97
DATE OF WEEKLY LIST:

REFERENCE NUMBER: 97000851

NOMINATOR: STATE

REASONS FOR REVIEW:

APPEAL: N DATA PROBLEM: N LANDSCAPE: N LESS THAN 50 YEARS: N
OTHER: N PDIL: N PERIOD: N PROGRAM UNAPPROVED: N
REQUEST: N SAMPLE: N SLR DRAFT: Y NATIONAL: N

COMMENT WAIVER: N

ACCEPT RETURN REJECT _____ DATE

ABSTRACT/SUMMARY COMMENTS:

RECOM./CRITERIA Accept A

REVIEWER LMcClelland

DISCIPLINE History

TELEPHONE 343-9544

DATE 8/8/97

DOCUMENTATION see attached comments Y/N see attached SLR Y/N



0.

BEDFORD SCHOOL

2400 SCHOOL LANE

BEDFORD, TARRANT CO., TEXAS

PHOTOGRAPH 1 of 8



BEDFORD SCHOOL

2400 SCHOOL LANE

BEDFORD, TARRANT CO., TEXAS

PHOTOGRAPH 2 of 8



BEDFORD SCHOOL

2400 SCHOOL LANE

BEDFORD, TARRANT CO., TEXAS

PHOTOGRAPH 3 of 8



BEDFORD SCHOOL

2400 SCHOOL LANE

BEDFORD, TARRANT CO., TEXAS

PHOTOGRAPH 4 of 8



BEDFORD SCHOOL

2400 SCHOOL LANE

BEDFORD, TARRANT CO., TEXAS

PHOTOGRAPH 5 of 8



BEDFORD SCHOOL

2400 SCHOOL LANE

BEDFORD, TARRANT CO., TEXAS

PHOTOGRAPH 6 of 8

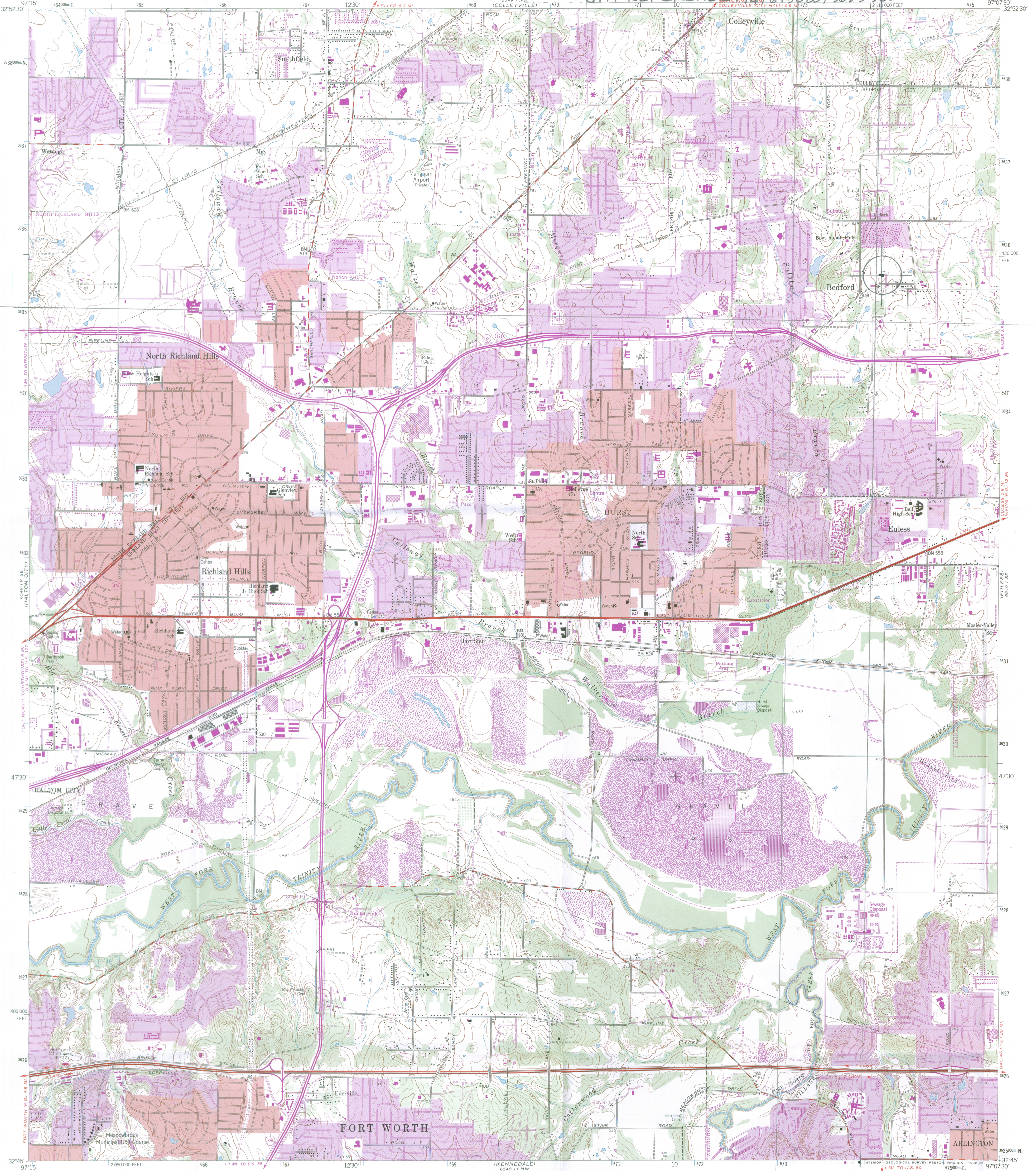


BEDFORD SCHOOL
2400 SCHOOL LANE
BEDFORD, TARRANT CO., TEXAS

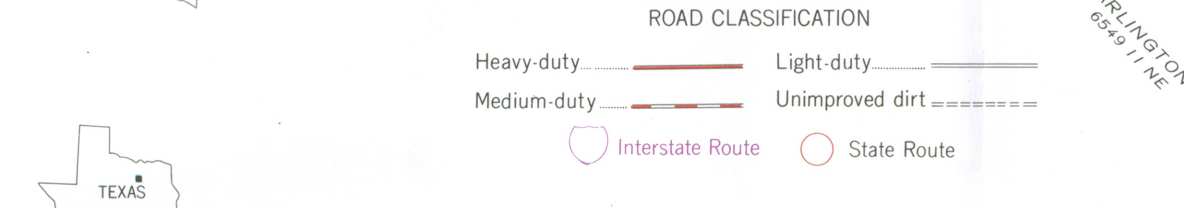
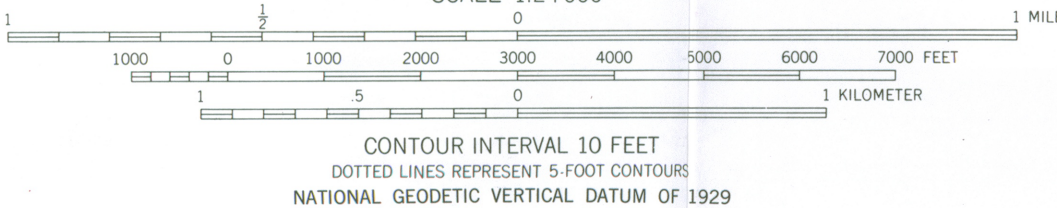
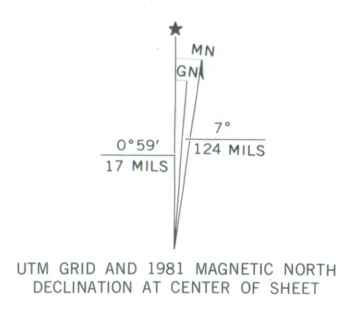
PHOTOGRAPH 7 of 8



BEDFORD SCHOOL
2400 SCHOOL LANE
BEDFORD, TARRANT CO., TEXAS
PHOTOGRAPH 2 of 8



Mapped, edited, and published by the Geological Survey
Control by USGS and NOS/NOAA
Topography by photogrammetric methods from aerial photographs taken 1956. Field checked 1959
Polyconic projection. 10,000-foot grid ticks based on Texas coordinate system, north central zone. 1000-meter Universal Transverse Mercator grid ticks, zone 14, shown in blue. 1927 North American Datum. To place on the predicted North American Datum 1983 move the projection lines 10 meters south and 27 meters east as shown by dashed corner ticks
Revisions shown in purple and woodland compiled from aerial photographs taken 1978 and other sources. This information not field checked. Map edited 1981
Purple tint indicates extension of urban areas



THIS MAP COMPLIES WITH NATIONAL MAP ACCURACY STANDARDS
FOR SALE BY U.S. GEOLOGICAL SURVEY, DENVER, COLORADO 80225, OR RESTON, VIRGINIA 22092
A FOLDER DESCRIBING TOPOGRAPHIC MAPS AND SYMBOLS IS AVAILABLE ON REQUEST



HURST, TEX.
SW/4 GRAPEVINE 15' QUADRANGLE
N3245-W9707.5/7.5
1959
PHOTOREVISED 1981
DMA 6549 1 SW-SERIES V882