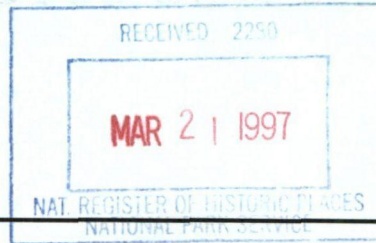


**United States Department of the Interior  
National Park Service**

**NATIONAL REGISTER OF HISTORIC PLACES  
REGISTRATION FORM**



**1. NAME OF PROPERTY**

**HISTORIC NAME:** Brown Building  
**OTHER NAME/SITE NUMBER:** N/A

**2. LOCATION**

**STREET & NUMBER:** 708 Colorado Street  
**CITY OR TOWN:** Austin  
**STATE:** Texas **CODE:** TX  
**VICINITY:** N/A  
**COUNTY:** Travis  
**NOT FOR PUBLICATION:** N/A  
**CODE:** 453 **ZIP CODE:** 78701

**3. STATE/FEDERAL AGENCY CERTIFICATION**

As the designated authority under the National Historic Preservation Act, as amended, I hereby certify that this  nomination request for determination of eligibility meets the documentation standards for registering properties in the National Register of Historic Places and meets the procedural and professional requirements set forth in 36 CFR Part 60. In my opinion, the property  meets  does not meet the National Register criteria. I recommend that this property be considered significant  nationally  statewide  locally. (  See continuation sheet for additional comments.)

*Curtis J. Russell*  
\_\_\_\_\_  
Signature of certifying official

*18 March 1997*  
\_\_\_\_\_  
Date

State Historic Preservation Officer, Texas Historical Commission

State or Federal agency and bureau

In my opinion, the property  meets  does not meet the National Register criteria.  
(  See continuation sheet for additional comments.)

\_\_\_\_\_  
Signature of commenting or other official

\_\_\_\_\_  
Date

State or Federal agency and bureau

**4. NATIONAL PARK SERVICE CERTIFICATION**

I hereby certify that this property is:

- entered in the National Register  
     See continuation sheet.
- determined eligible for the National Register  
     See continuation sheet.
- determined not eligible for the National Register
- removed from the National Register
- other (explain) :

Signature of the Keeper

Date of Action

*Sandra Mc Clelland*  
\_\_\_\_\_

*7/24/97*  
\_\_\_\_\_

**5. CLASSIFICATION**

---

**OWNERSHIP OF PROPERTY:** private

**CATEGORY OF PROPERTY:** building

<b>NUMBER OF RESOURCES WITHIN PROPERTY:</b>	<b>CONTRIBUTING</b>	<b>NONCONTRIBUTING</b>
	1	0 BUILDINGS
	0	0 SITES
	0	0 STRUCTURES
	0	0 OBJECTS
	1	0 TOTAL

**NUMBER OF CONTRIBUTING RESOURCES PREVIOUSLY LISTED IN THE NATIONAL REGISTER:** 0

**NAME OF RELATED MULTIPLE PROPERTY LISTING:** N/A

---

**6. FUNCTION OR USE**

---

**HISTORIC FUNCTIONS:** COMMERCE/TRADE: business

**CURRENT FUNCTIONS:** VACANT/NOT IN USE

---

**7. DESCRIPTION**

---

**ARCHITECTURAL CLASSIFICATION:** Other: 2-part vertical block; Art Moderne

**MATERIALS:** FOUNDATION CONCRETE  
WALLS BRICK; STONE (GRANITE)  
ROOF ASPHALT  
OTHER GLASS; METAL

**NARRATIVE DESCRIPTION** (see continuation sheets 7-5 through 7-6)

United States Department of the Interior  
National Park Service

**National Register of Historic Places  
Continuation Sheet**

Section 7 Page 5

Brown Building  
Austin, Travis County, Texas

---

In 1938 architects C.H. Page and Son designed the Brown Building for a prominent site at the southwest corner of Colorado and Eighth streets in downtown Austin. Built of concrete reinforced with structural steel, the 8-story office tower exemplified the tenets of Art Moderne design. Its flush piers, recessed metal spandrels, vertically arranged casement windows and stylized granite entry provide the hallmarks of the style. Additions of a ninth story in 1949 and a tenth story in 1952 matched the scale and materials of the original composition. The resultant 10-story building conforms with Longstreth's typology for 2-part vertical blocks. Surviving virtually unchanged since this period of significance, the building retains a high degree of its historic integrity of location, design, setting, materials, workmanship, feeling and association.

---

Facing east onto Colorado Street and north onto Eighth Street in downtown Austin, the 10-story Brown Building features a rectangular plan incorporating a light well into the rear elevation. Its sloping site reflects the hilly terrain, most dramatically at the primary facade along Colorado Street. The building directly abuts the sidewalk on the street-side elevations, with a narrow alley on the south side. The west side originally adjoined a series of 1-part commercial blocks which were dismantled in the 1980s. Surrounding historic buildings include the Federal Courthouse, Austin's City Hall and the Capital National Bank in the Norwood Building, with the Travis County Courthouse, the Governor's Mansion and the State Capitol just a few blocks beyond (see Map-14).

Slabs of Texas red granite face the principal (east) facade of the building at ground level (see Photos 1 and 2). The centered entranceway features a deep convex metal soffit surmounting four metal doors with large glass panels. Tripartite rounded bands of granite frame this entry. The name of the building is inscribed in large metal letters executed in an Art Moderne font. Four tall narrow windows flank the doorway on the right, mirrored by a door and three windows on the left. A granite stringcourse extends across the facade, dividing the red granite of the ground level from the buff brick of the remainder of the building. Banks of windows dominate the facade at the second through tenth stories, vertically arranged in eight rows of single rectangular casement windows separated by metal spandrels embellished with a raised rectangle. A double column of windows at the center of the facade flanked by piers of a greater width than the others emphasizes the symmetry of the composition.

The narrower north elevation replicates the principal facade in materials and fenestration pattern with a few differences (see Photos 1 and 2). At the ground level are three narrow openings alternating with two wider ones. The leftmost of these has been transformed from a bank of windows into a second entry for the building. Above the stringcourse, the vertical window arrangement reflects that of the primary facade, featuring seven banks of vertically aligned columns of windows.

United States Department of the Interior  
National Park Service

## National Register of Historic Places Continuation Sheet

Section 7 Page 6

Brown Building  
Austin, Travis County, Texas

---

The rear (west) elevation lacks both the granite cladding and the spandrels of the east and north elevations, with white stone sills providing the sole ornamentation (see Photo 4). The facade is bisected by a deep light well starting at the second story. Four banks of evenly spaced windows occupy each wing on the second through tenth floors. A large square smokestack climbs the center of the light well, flanked by a single window on each story.

The south elevation also is relatively plain (see Photo 3). The metal casement window frames, like those of the west elevation, are unpainted. Seven tiers of tall windows occupy the second through tenth floors. At ground level the seventh window is replaced by a garage door at the western end.

Built on the site of the firm's earlier office, the building reflected Brown & Roots connections to the construction trades. A higher grade of steel than usual was needed for the reinforcing bars for the reinforced concrete in the building, due to the unusually long spans between columns combined with shallow beams. These rail steel reinforcing bars were manufactured by Texas Steel Company. Other steel components were provided by the Tips Engine Works, the lumber and paint by Calcasieu Lumber Company, the brick by Acme-Elgin Standard Face Brick, the Kalamein Doors by Williamson Company and Maisey & Paige, and the Trinity Mix Masonry Cement by Trinity Portland Cement Company. Acoustical contractors were the S.W. Nichols Company (Texas Architect).

Primarily focused in the elevator lobby, the building's interior ornamentation reflects its Art Moderne style (see Figure-16). Panels of pink tinged marble grace the ceiling and walls, contrasting with a floor of pink, green, and yellow terrazzo. Elaborate geometric aluminum and glass lighting panels sweep from the center of the ceiling to the top of each of three elevators. The center panel above each elevator is etched with stylized allegorical figures depicting different aspects of the work of Brown and Root, including a dam, a highway, and an oil field. Terrazzo floors are carried through to the interior stairway, which serves as a fire escape, and the floors of the corridors on the second through eighth stories. Floors on the ninth and tenth stories are concrete. Rest rooms exist at most landings, with walls of travertine. The material of the wainscot in each corridor is also of this material. Rooms on the second through tenth stories, which served as offices, featured ten foot ceilings now covered with dropped panels of acoustic tile. Office partitions of white oak surround the travertine panels, with some decorative plaster molding on all floors. A basement houses boilers and service entry, as well as two vaults.

Closed as an office tower in 1990, the Brown Building remained vacant for the more than six years. The current owners intend to rehabilitate the building, converting the offices into apartments under the guidelines of the Investment Tax Credit program.

**8. STATEMENT OF SIGNIFICANCE**

---

**APPLICABLE NATIONAL REGISTER CRITERIA**

- A** PROPERTY IS ASSOCIATED WITH EVENTS THAT HAVE MADE A SIGNIFICANT CONTRIBUTION TO THE BROAD PATTERNS OF OUR HISTORY.
- B** PROPERTY IS ASSOCIATED WITH THE LIVES OF PERSONS SIGNIFICANT IN OUR PAST.
- C** PROPERTY EMBODIES THE DISTINCTIVE CHARACTERISTICS OF A TYPE, PERIOD, OR METHOD OF CONSTRUCTION OR REPRESENTS THE WORK OF A MASTER, OR POSSESSES HIGH ARTISTIC VALUE, OR REPRESENTS A SIGNIFICANT AND DISTINGUISHABLE ENTITY WHOSE COMPONENTS LACK INDIVIDUAL DISTINCTION.
- D** PROPERTY HAS YIELDED, OR IS LIKELY TO YIELD, INFORMATION IMPORTANT IN PREHISTORY OR HISTORY.

**CRITERIA CONSIDERATIONS:** G

**AREAS OF SIGNIFICANCE:** Commerce; Architecture

**PERIOD OF SIGNIFICANCE:** 1938-1952

**SIGNIFICANT DATES:** 1938 1949 1952

**SIGNIFICANT PERSON:** N/A

**CULTURAL AFFILIATION:** N/A

**ARCHITECT/BUILDER:** C.H. Page and Son (architect)

**NARRATIVE STATEMENT OF SIGNIFICANCE** (see continuation sheets 8-7 through 8-11)

---

**9. MAJOR BIBLIOGRAPHIC REFERENCES**

---

**BIBLIOGRAPHY** (see continuation sheets 9-12 through 9-13)

**PREVIOUS DOCUMENTATION ON FILE (NPS):** N/A

- preliminary determination of individual listing (36 CFR 67) has been requested.
- previously listed in the National Register
- previously determined eligible by the National Register
- designated a National Historic Landmark
- recorded by Historic American Buildings Survey #
- recorded by Historic American Engineering Record #

**PRIMARY LOCATION OF ADDITIONAL DATA:**

- State historic preservation office (*Texas Historical Commission*)
- Other state agency
- Federal agency
- Local government
- University
- Other -- Specify Repository: Austin History Center

United States Department of the Interior  
National Park Service

National Register of Historic Places  
Continuation Sheet

Section 8 Page 7

Brown Building  
Austin, Travis County, Texas

In 1938 Herman Brown commissioned local architects C.H. Page and Son to design an office tower as the Austin headquarters for his financial enterprises, among them the construction firm of Brown & Root. Founded as a road building venture two decades previously, Brown & Root evolved into one of the largest construction companies in the world. They relied heavily on government contracts during this period, using political connections to garner commissions for large projects such as the Marshall Ford, Granite Shoals and Marble Falls dams, as well as various highway, bridge, pipeline and pumping station projects throughout the state. Their new Art Moderne office tower placed Brown & Root at the political heart of the state capitol, within easy walking distance of city hall, county and federal courthouses and the halls of state government. Increasing financial success during World War II and in the immediate postwar period twice prompted expansion of the building in accordance with the architect's original design. The resultant composition proved one of Austin's finest examples of the Art Moderne style, with an address highly prized by the state's political and business elite. As a result, it is nominated at the local level of significance under Criterion A in the area of Commerce and under Criterion C in the Area of Architecture.

On 10 November 1892, Herman Brown was born into a "distinguished Texas family, one with more history than assets" (Blankenhorn: 1). As the eldest son in a family of seven children, Brown left the University of Texas in 1912 after only one year of study. He started his career as the foreman of a street-paving job in Bell County to help support his family in Belton. When the road contractor proved unable to pay him, Brown asked for title to the assets of the company, including 18 mules, four scrapers, two plows, six wagons and an earth-moving machine. Forced to go into the road-building business for himself, he soon won a contract from the Freestone County commissioners. Brown's entry into the business proved auspicious as passage of the Federal Road Act in 1916 and formation of the Texas Highway Commission in 1917 soon fomented a tremendous period of growth in the road building industry.

Brown's 1917 marriage to Margaret Root of Taylor quickly led to an investment by her brother Dan, a prosperous cotton farmer. This infusion of capital allowed the renamed company of Brown & Root to invest in advanced road building equipment. By 1923, Brown recruited his brother George into the firm. With studies at the Rice Institute (now Rice University) and a tour of duty with the Marines during World War I under his belt, George had earned a degree in mining engineering from the Colorado School of Mines in 1922. His stint as a geologist with the Anaconda Company's copper mine in Butte, Montana, ended in a mine cave-in that shattered his skull. George joined Brown & Root after his recovery, becoming a full partner on Dan Root's death in 1929. Herman served as president of the company until his death in 1962, with George acting as executive vice-president throughout the same period.

United States Department of the Interior  
National Park Service

National Register of Historic Places  
Continuation Sheet

Section 8 Page 8

Brown Building  
Austin, Travis County, Texas

The firm continued to build roads across the state of Texas during its early years, with the public sector funding most of their projects. Losses caused by rain delays plagued most such projects during this period, however, escalating costs for the road contractor. Brown & Root sought to mitigate this financial burden by seeking commissions in arid west Texas, building two roads in that region for every one built in rainy south and east Texas (Blankenhorn: 2). The company maintained its headquarters in Austin until 1926, when the high demand for street-building in Houston prompted a move to that city. Despite this relocation, Herman maintained an office in Austin to facilitate dealings with the state highway department's offices at the state capitol.

Despite an eagerness to lessen its reliance on government contracts, the firm continued its extensive involvement with the public sector throughout the Depression. Their close ties with local politicians helped Brown & Root secure contracts from the new depression relief agencies such as the Works Progress Administration. Federal programs focused on labor intensive improvements to the nation's infrastructure during this period as a way to make work for extensive pools of unemployed laborers. In one such effort, the Lower Colorado River Authority (LCRA) began planning construction of the Marshall Ford (now Mansfield) Dam on the Colorado River in 1936 to provide flood control and electric power. The construction of this and other dams along the Colorado River represented one of the largest projects of its type in the nation, providing the "key flood control facility of the LCRA" (Skaggs: 15). In a joint venture with the McKenzie Construction Company of San Antonio, Brown & Root submitted the low bid of \$5,781,235 to build the first phase of the project just 18 miles west of downtown Austin. U.S. Secretary of the Interior Harold Ickes awarded them the contract later the same year, despite Brown & Root's lack of experience in dam building. Political support from Herman Brown's contacts in the halls of government, including freshman congressman Lyndon B. Johnson, proved critical in securing subsequent funding for this project (Caro: 384). The firm completed this project in 1941, following delays caused by the LCRA's struggles to obtain funding to cover cost overruns on the project (Clay: 165). By its completion, the 27-story, mile-wide dam required two million tons of concrete and a million tons of dirt fill at a total cost of more than \$27 million. Brown & Root's profits from the first phase of construction on the massive public works project alone amounted to one million dollars (Caro: 475). Financing for their new office building in Austin was secured based solely on the revenues from this single project.

Brown & Root's next federal project, started while the Marshall Ford Dam was still under way, involved construction of the Naval Air Station at Corpus Christi in 1940. World War II proved a lucrative period for Brown & Root. In 1942 the firm contracted with the Navy to build ships through a subsidiary named the Brown Shipbuilding Company, operating out of Greens Bayou on the Houston Ship Channel. The contract called for 350 combat boats including infantry landing craft, PC

United States Department of the Interior  
National Park Service

## National Register of Historic Places Continuation Sheet

Section 8 Page 9

Brown Building  
Austin, Travis County, Texas

---

submarine destroyers, and destroyer escorts. Despite its lack of experience in this new field, the company successfully pursued the contract through their political connections. In meeting the terms of the contract, the company received four "E" awards for efficiency from the Navy (Blankenhorn: 3).

In an effort to adjust to a peacetime economy, the Brown Shipbuilding yards were converted into the headquarters for a new petroleum and chemical division in 1946. This division designed, engineered, and built gas compressors and pipelines, winning many private sector contracts to build chemical and petrochemical plants and pulp mills (Gillian: 1). Additionally, the division purchased the Big Inch and Little Big Inch pipelines from the federal government, built during World War II for \$143 million, creating the Texas Eastern Transmission Company to oversee transportation of natural gas to Pennsylvania and New York by 1950.

Because of its ideal location at the political center of the state capitol, the Brown Building attracted politically powerful tenants throughout this period. In addition to the Brown & Root offices on the eighth floor, tenants in 1940 included the National Youth Administration (until recently under Johnson's direction) on the first floor, the Texas State Employment Service on the second floor, and the Texas Unemployment Compensation Commission on the third through sixth floors. Various politicians occupied individual offices on the remaining two floors, including Johnson and attorney Ralph Yarborough. In 1943 Lady Bird Johnson moved her radio station, KTBC, into ground floor offices at the building (Waldman: 11). The Browns' political alliance with the Johnsons eventually established them as leading contributors to his campaigns. In 1947 the Social Security Board replaced the NYA on the first floor. Expansion of the law firm of Clark-Thomas, who conducted Brown & Root's legal affairs, prompted the ninth floor addition to the building in 1949. Similarly, expansion of the offices of the State Restaurant Association of Texas was accommodated by a tenth floor addition in 1952.

In the 1950s the firm became the federal government's prime military contractor (Blankenhorn: 3). This period witnessed the reconstruction of fortifications on Guam for use as a U.S. naval base, as well as construction of military bases in France, Spain and Vietnam. By the end of the decade, Brown & Root was one of the largest engineering and construction companies in the world (Tyler: 760). The international scope of the company expanded as it constructed dams, air fields, chemical plants, pipelines, hydroelectric installations and petrochemical plants throughout the world. In 1961 Brown & Root won a \$1.5 million planning contract for NASA's Manned Spacecraft Center (now the Lyndon B. Johnson Space Center) in Houston. Despite the changing nature of their business during this period, Brown & Root maintained offices in the building through 1962 to stay connected with the political decision making process in the state capitol.

United States Department of the Interior  
National Park Service

## National Register of Historic Places Continuation Sheet

Section 8 Page 10

Brown Building  
Austin, Travis County, Texas

---

Herman Brown "was a major contributor to the changes [that] transformed the face of Texas in recent years" (Houston Post: 1). The Brown Foundation, which he cofounded in 1951 with his brother and their wives, gave extensive grants in the arts and education. Brown also served on the board of directors for First City National Bank of Houston, Texas Eastern Transmission Corporation, Southwestern University, Armco Steel Corporation and the Texas Children's Hospital. At the time of his death on 15 November 1962, Brown's financial empire encompassed hotels, real estate, paper mills, oil and gas production and mines, as well as various types of construction. Brown & Root was purchased by the Halliburton Company of Dallas the following month for \$36,745,000. At the time of its acquisition, the firm posted annual revenues of \$5.5 billion (Tyler: 762). It continues to operate as the engineering and construction services group for Halliburton under the same name.

George Brown subsequently turned his interest to the petroleum business, running a small company he named the Brownco Oil Company. He also spent much of his time overseeing the Brown Foundation, from which he allocated funds to Rice University, Southwestern University and the Houston Museum of Fine Arts. George also served, at various times, as director for the Halliburton Company, Armco Steel Corporation, Louisiana Land and Exploration Company, International Telephone and Telegraph Company, Trans-World Airlines, Southland Paper Company, First City Bancorporation and the Highland Oil Company. He died on 22 January 1983.

The firm responsible for the design of the Brown Building began in 1898 under the name of Page Brothers, Architects. One of the most significant architectural firms in Texas during the early 20th century, the partnership specialized in public projects such as courthouses and schools (Henry: 6). In 1886 Charles Henry and Louis Page arrived in Austin from St. Louis with their parents, immigrants from England. Their father was a mason and contractor who worked on the construction of the new Texas State Capitol (1882-88; NR 1970). The two brothers worked briefly for their father. After serving an apprenticeship with Austin architect Burt McDonald, C.H. Page opened his practice as Makin and Page (Tyler:10). By 1898 he was in practice on his own until joined by his brother Louis to form Page Brothers, Architects. Amongst their first big commissions was the Texas Building (1903) for the St. Louis World's Fair, but the brothers made a name for themselves designing schools and courthouses throughout Texas. Examples of the firm's work in Austin included the Municipal Building (1907), the Beaux Arts style Littlefield Building (1910-15; NR 1975) and the Art Deco style Travis County Courthouse (1930). In addition to these local buildings, the firm designed numerous Classical Revival style courthouses including the Hays County Courthouse (1908; NR 1980) in San Marcos, the Anderson County Courthouse (1914; NR 1992) in Palestine and the Hunt County Courthouse (1928; NR 1996) in Greenville. Civic work included Mood Hall at Southwestern University in Georgetown (1906; NR 1975), the high school in Refugio (1933), and municipal buildings in the Spanish Colonial Revival style such as the Sweetwater City Hall (1926) and the Mexia City Hall (1927). After Louis' death in 1934, C.H. Page Jr. joined his father in the renamed firm of

United States Department of the Interior  
National Park Service

## National Register of Historic Places Continuation Sheet

Section 8 Page 11

Brown Building  
Austin, Travis County, Texas

C.H. Page and Son upon completing his degree at the University of Texas School of Architecture. The new firm continued building public projects such as the Art Moderne style United States Courthouse (1935) in Austin.

The firm's choice of the Art Moderne style for the Brown Building reflected Brown & Root's involvement in the political arena during this period. The Art Moderne style experienced widespread popularity during the 1930s in the construction of post offices, libraries, city halls, and courthouses funded through New Deal era programs such as the Public Works Administration. The style was considered particularly appropriate for public buildings because of its characteristic restraint and its capacity to showcase skilled workmanship. Sometimes called Classical or PWA Moderne, the style can be distinguished from its predecessors through its simpler massing and ornamentation. The stepped-back massing of the Art Deco style was replaced by single-block massing, flat roofs and a virtual dearth of exterior ornamentation in the Art Moderne style. Vertically tiered windows, often separated by metal spandrels, dominated the exteriors of buildings designed in this style. However, the stylized motifs, allegorical figures, and relief carving found on Art Deco buildings were sometimes used in Art Moderne interiors, which tended to be more exuberant than their exteriors. The area surrounding the Brown Building forms a microcosm of the development of the Art Deco and Art Moderne styles in Austin. Within a few blocks, buildings designed by this architectural firm include the full blown Art Deco style Travis County Courthouse (1930), the Classical Moderne United States Courthouse (1935) and the Brown Building (1938). A more streamlined Art Moderne design can be seen at the Tribune Building, designed in the same year as the Brown Building by the firm of Louis Page's son, Page and Southerland.

Other fine examples of Art Moderne buildings in Texas include two municipal buildings, the Houston and Fort Worth city halls. Architects Wyatt C. Hedrick and Elmer G. Withers designed the Fort Worth City Hall in 1938 with minimalist ornamentation suggestive of the approach used at the Brown Building. A black granite entrance and six narrow piers topped by lintels on the principal facade emphasize its vertical qualities. Similarly, Joseph Finger's design for the Houston City Hall (1939; NR 1990) focuses on a central 10-story block with vertical fenestration and a flat roof. That the Brown Building compares favorably with these public monuments reflects the political patronage and power that Brown & Root exerted in the state at the time. The stature of the firm as one of the largest construction companies in the world contributes to the building's significance under Criterion A in the area of Commerce. As an outstanding example of the work of C.H. Page & Son and a valuable manifestation of the Art Moderne style in Austin, the Brown Building is also eligible for listing under Criterion C in the area of Architecture at the local level of significance.

United States Department of the Interior  
National Park Service

## National Register of Historic Places Continuation Sheet

Section 9 Page 12

Brown Building  
Austin, Travis County, Texas

---

### BIBLIOGRAPHIC REFERENCES

- Adams, John A. *Damming the Colorado: The Rise of the Lower Colorado River Authority 1933-1939*. College Station: Texas A&M University Press, 1990.
- Austin City Directory*. Various dates. Austin History Center, Austin, Texas.
- Blankenhorn, Dana. "Houston's Founding Fortunes." *Houston Business Journal*, 19 March 1979.
- "Brown and Root Inc. Magnate Dies at 84." *Fort Worth Star-Telegram*, 23 January 1983.
- Brown Family Biography Files. Texas State Library and Archives, Austin, Texas.
- "Browns Set up Chair of History." *Austin American-Statesman*, 17 November 1962.
- "Builders of Texas." TMs, 1981. Texas State Library and Archives, Austin, Texas.
- Capitman, Barbara et al. *Rediscovering Art Deco USA*. New York: Viking Studio Books, 1994.
- Caro, Robert A. *The Years of Lyndon Johnson: The Path to Power*. New York: Vintage Books, 1990.
- Clay, Comer. *The Lower Colorado River Authority: A Study in Politics and Public Administration*. PhD Dissertation, University of Texas, 1948.
- Cohen, Judith Singer. *Cowtown Moderne*. College Station: Texas A&M University Press, 1988.
- "Engineer, Philanthropist Brown dies." *The Houston Post*, 23 January 1983.
- Freeman, Martha Doty. "U.S. Naval Station, Orange, Texas." Historic American Engineering Record, National Park Service, 1996.
- Gillian, Linda. "Brown and Root: From Moving Texas Dirt to Spanning the World." *The Houston Chronicle*, 20 March 1980.
- Gillian, Linda. "Brown and Root is a Golden Problem for Halliburton Co." *The Houston Chronicle*, 4 March 1980.

United States Department of the Interior  
National Park Service

## National Register of Historic Places Continuation Sheet

Section 9 Page 13

Brown Building  
Austin, Travis County, Texas

---

"Heart Attack Fatal to Herman Brown." *Dallas Times-Herald*, 16 November 1962.

Henry, Jay C. *Architecture in Texas 1895-1945*. Austin: the University of Texas Press, 1993.

"Herman Brown Funeral to be Held 10:30 a.m. Today." *The Houston Post*, 17 November 1962.

"Herman Brown's Career Epic in Tradition of Free Enterprise." *The Houston Post*,  
17 November 1962.

"Houston Millionaire's Rites Planned Today." *Dallas Times Herald*, 17 November 1962.

"Johnson, Connally Join Mourners at Brown Rites." *The Houston Chronicle*, 18 November 1962.

Keahy, Kirby and Allen McCree, eds. *Austin and its Architecture*. Austin: Austin Chapter AIA,  
1976.

McKnight, Felix R. "Brilliant Record of Liberty and Navy Ship Building Illumines Dim-out Along  
Houston's Channel Area." *Dallas News*, 13 June 1943.

Skaggs, William E., ed. *Central Texas Business and Professional Directory*. Austin:  
Centex Press, 1952.

Smith, Hank Todd (ed.). *Austin, Its Architects and Architecture 1836-1986*. Austin: Austin Chapter  
AIA, 1986.

Stillwell, Hart. *The Herman Brown Story*. Fort Worth: The Labor News, 195?.

Texas Architect (1940). *Architecture and Planning Library*, the University of Texas, Austin.

Tyler, Ron, ed. *The New Handbook of Texas*. Austin: the Texas State Historical Association, 1996.

Waldman, Kevin L. "Walking on an Ethical Tightrope: LBJ's Role in the Meteoric Rise of Radio  
Station KTBC." *TMs*, 1995. *Architecture and Planning Library*, the University of Texas,  
Austin.

Whitworth, Henry P., ed. *Texas Architecture*. Austin: Austin Chapter AIA, 1940.

**10. GEOGRAPHICAL DATA**

---

**ACREAGE OF PROPERTY:** less than 1 acre

**UTM REFERENCES**

ZONE EASTING NORTHING  
14 620620 3349180

**VERBAL BOUNDARY DESCRIPTION**

Lots 7-8, Block 82, Original Town, Austin, Texas

**BOUNDARY JUSTIFICATION**

The nominated property encompasses all land historically associated with the building.

---

**11. FORM PREPARED BY (with assistance from Bruce Jensen, THC Architectural Historian)**

---

**NAME/TITLE:** Tamara Scott

**ORGANIZATION:**

**DATE:** October 1996/March 1997

**STREET & NUMBER:** 402 East 33rd Street

**TELEPHONE:** (512)473-2437

**CITY OR TOWN:** Austin

**STATE:** TX **ZIP CODE:** 78705

---

**ADDITIONAL DOCUMENTATION**

---

**CONTINUATION SHEETS**

**MAPS (see continuation sheet Map-14)**

**PHOTOGRAPHS (see continuation sheet Photo18)**

**ADDITIONAL ITEMS (see continuation sheets Figure-15 through Figure 16 and Plan-17)**

---

**PROPERTY OWNER**

---

**NAME:** Canile Co. LLC

**STREET & NUMBER:** 8309 North IH-35, Suite 200 **TELEPHONE:** (512)832-4032

**CITY OR TOWN:** Austin

**STATE:** TX **ZIP CODE:** 78753

United States Department of the Interior  
National Park Service

# National Register of Historic Places Continuation Sheet

Brown Building  
Austin, Travis County, Texas

Section MAP Page 14

## CONTEXTUAL MAP OF DOWNTOWN AUSTIN



United States Department of the Interior  
National Park Service

# National Register of Historic Places Continuation Sheet

Section FIGURE Page 15

Brown Building  
Austin, Travis County, Texas

**PERSPECTIVE SKETCH FOR BROWN BUILDING, 1938**  
(source: Architectural Archives, Austin History Center, Austin, Texas)



United States Department of the Interior  
National Park Service

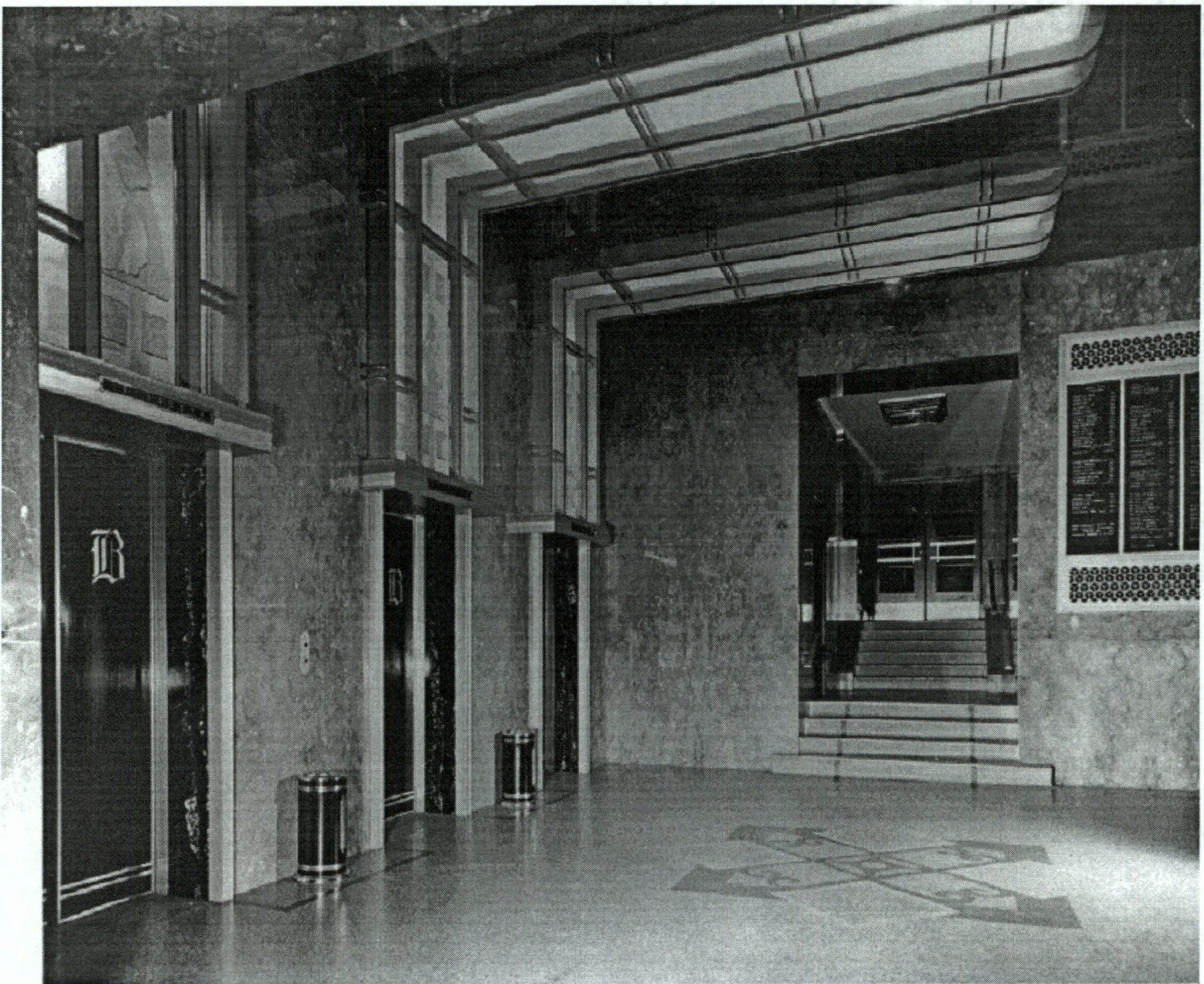
## National Register of Historic Places Continuation Sheet

Section FIGURE Page 16

Brown Building  
Austin, Travis County, Texas

### INTERIOR VIEW OF LOBBY, c.1940

(source: Architectural Archives, Austin History Center, Austin, Texas)



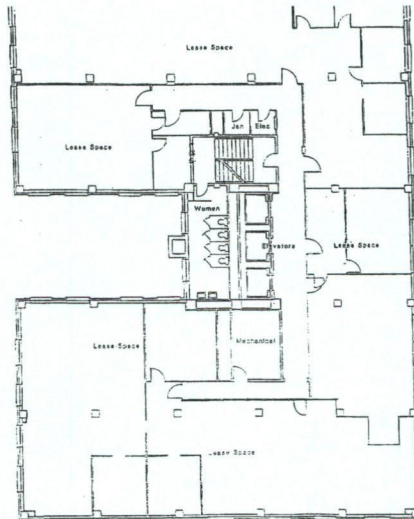
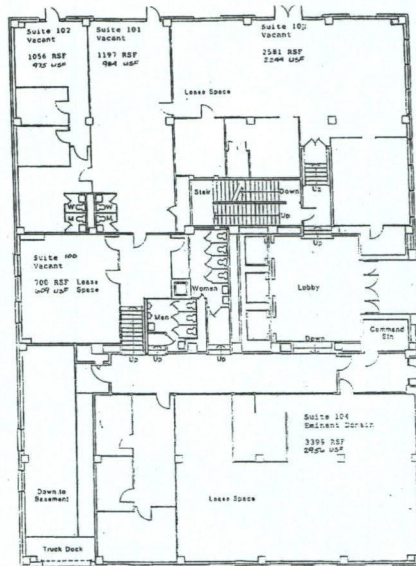
United States Department of the Interior  
National Park Service

# National Register of Historic Places Continuation Sheet

Section PLAN Page 17

Brown Building  
Austin, Travis County, Texas

## REPRESENTATIVE FLOOR PLANS (FIRST AND FOURTH)



United States Department of the Interior  
National Park Service

## National Register of Historic Places Continuation Sheet

Section PHOTO Page 18

Brown Building  
Austin, Travis County, Texas

---

### PHOTO INVENTORY

BROWN BUILDING

708 COLORADO STREET

AUSTIN, TRAVIS COUNTY, TEXAS

BILL BROWN - PHOTOGRAPHER (EXCEPT AS NOTED)

OCTOBER 1996 (EXCEPT AS NOTED)

ORIGINAL NEGATIVES ON FILE WITH THE PROPERTY OWNER (EXCEPT AS NOTED)

PHOTO 1 - Historic photo by Boone of Austin, c.1940, oblique view of north and east elevations, camera facing southwest, original negative on file with the Austin History Center, Austin, Texas

PHOTO 2 - Oblique view of north and east elevations, camera facing southwest

PHOTO 3 - Oblique view of south and east elevations, camera facing northwest

PHOTO 4 - View of west elevation, camera facing east

UNITED STATES DEPARTMENT OF THE INTERIOR  
NATIONAL PARK SERVICE

NATIONAL REGISTER OF HISTORIC PLACES  
EVALUATION/RETURN SHEET

REQUESTED ACTION: NOMINATION

PROPERTY NAME: Brown Building

MULTIPLE NAME:

STATE & COUNTY: TEXAS, Travis

DATE RECEIVED: 3/21/97 DATE OF PENDING LIST: 4/01/97  
DATE OF 16TH DAY: 4/17/97 DATE OF 45TH DAY: 5/05/97  
DATE OF WEEKLY LIST:

REFERENCE NUMBER: 97000364

NOMINATOR: STATE

REASONS FOR REVIEW:

APPEAL: N DATA PROBLEM: N LANDSCAPE: N LESS THAN 50 YEARS: Y  
OTHER: N PDIL: N PERIOD: N PROGRAM UNAPPROVED: N  
REQUEST: N SAMPLE: N SLR DRAFT: N NATIONAL: N

COMMENT WAIVER: N

ACCEPT RETURN REJECT DATE

ABSTRACT/SUMMARY COMMENTS:

Architecturally and historically significant skyscraper is importantly associated with <sup>as the 14th</sup> ~~boom~~ + Root, <sup>one of the largest</sup> ~~one of the largest~~ construction companies and a premier commercial enterprise of Austin's 20th century development. Building originally constructed in 1938 was added in 1938, 1949, and 1952. As a whole the skyscraper is a cohesive and significant example of Art Moderne style, <sup>with the additional floors being consistent with the original design and style and reflecting the company's growth due to gov't contracts and the post-war construction boom.</sup>

RECOM./CRITERIA A.C. (C.C. 6)

REVIEWER J. McClelland

DISCIPLINE A. History

TELEPHONE 343-9544

DATE 4/24/97

DOCUMENTATION see attached comments Y/N see attached SLR Y/N



Boone  
Alston

Austin History Center  
Austin Public Library  
P.O. Box 2287  
Austin, TX 78768-2287  
512-499-7388

ONE TIME REPRODUCTION  
RIGHTS ONLY

PICH 06779

BROWN BUILDING  
708 COLORADO  
AUSTIN, TRAVIS CO., TEXAS

PHOTOGRAPH 1 of 4



BROWN BUILDING  
708 COLORADO  
AUSTIN, TRAVIS CO., TEXAS  
PHOTOGRAPH 2 of 4



BROWN BUILDING

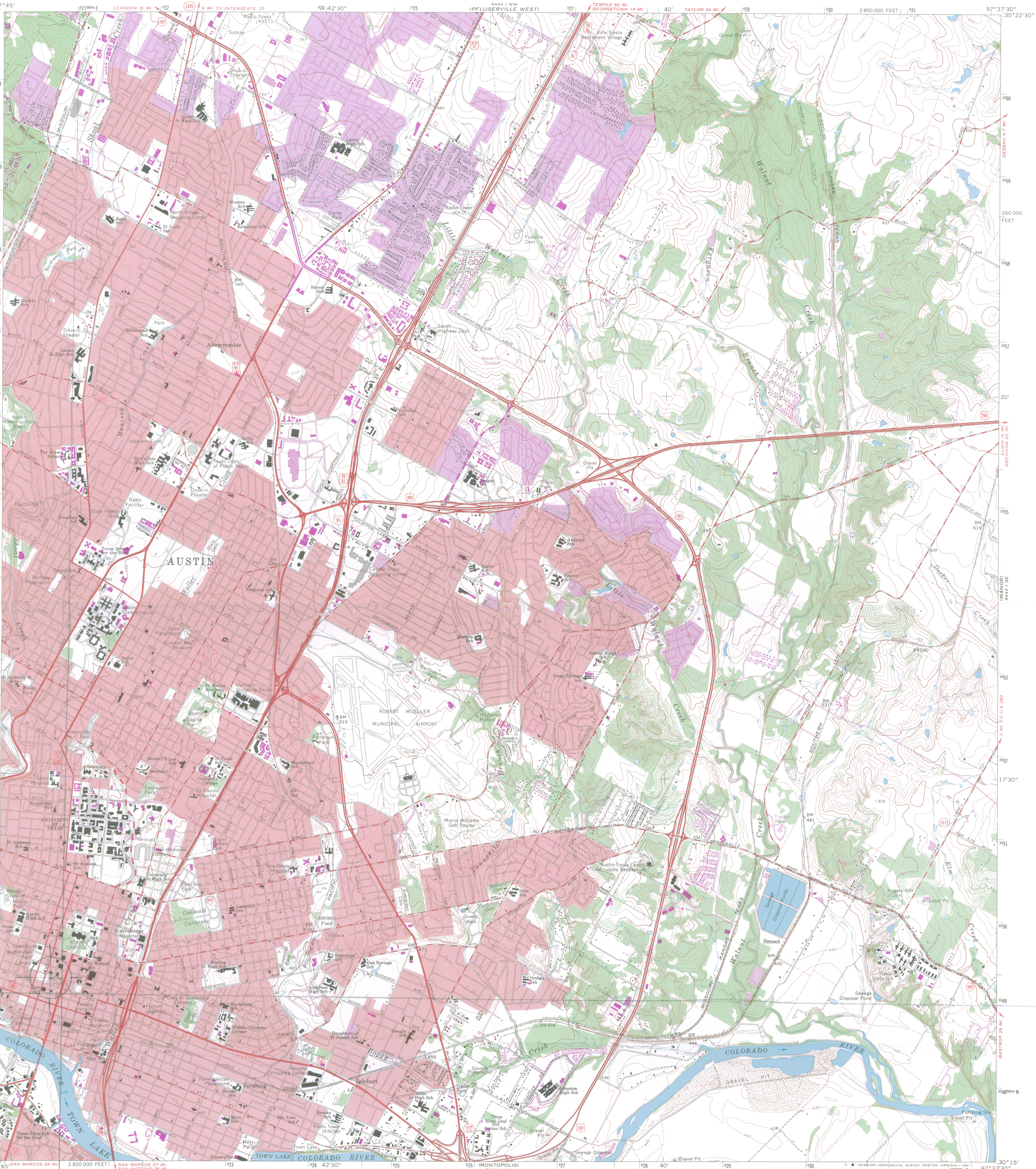
708 COLORADO

AUSTIN, TRAVIS CO., TEXAS

PHOTOGRAPH 3 of 4



BROWN BUILDING  
708 COLORADO  
AUSTIN, TRAVIS CO., TEXAS  
PHOTOGRAPH 4 of 4



Mapped, edited, and published by the Geological Survey  
Control by USGS and JSC&GS

Topography by photogrammetric methods from aerial  
photographs taken 1952. Field checked 1954. Revised from  
aerial photographs taken 1966. Field checked 1966

Polyconic projection. 1927 North American datum  
10,000-foot grid based on Texas coordinate system,  
central zone  
1000-meter Universal Transverse Mercator grid ticks,  
zone 14, shown in blue

Red tint indicates areas in which only landmark buildings are shown

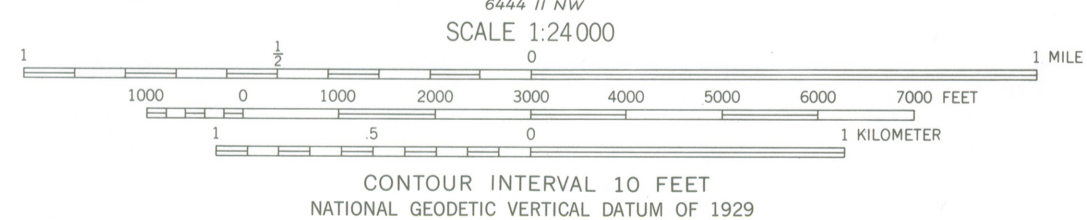
Fine red dashed lines indicate selected fence lines

Revisions shown in purple compiled from aerial photographs  
taken 1973. This information not field checked

Purple tint indicates extension of urban areas

UTM GRID AND 1973 MAGNETIC NORTH  
DECLINATION AT CENTER OF SHEET

To place on the predicted North American Datum 1983  
move the projection lines 18 meters south and  
28 meters east as shown by dashed corner ticks



THIS MAP COMPLIES WITH NATIONAL MAP ACCURACY STANDARDS  
FOR SALE BY U. S. GEOLOGICAL SURVEY, DENVER, COLORADO 80225, OR RESTON, VIRGINIA 22092  
A FOLDER DESCRIBING TOPOGRAPHIC MAPS AND SYMBOLS IS AVAILABLE ON REQUEST



QUADRANGLE LOCATION

ROAD CLASSIFICATION	
Primary highway, hard surface	Light-duty road, hard or improved surface
Secondary highway, hard surface	Unimproved road
Interstate Route	U. S. Route
	State Route

AUSTIN EAST, TEX.

N3015—W9737.5/7.5

1966  
PHOTOREVISED 1973  
DMA 4444 I SW-SERIES V882

3097-242