

1375
RECEIVED
SEP 14 1992
NATIONAL REGISTER

United States Department of the Interior
National Park Service

National Register of Historic Places
Registration Form

This form is for use in nominating or requesting determinations for individual properties and districts. See instructions in *How to Complete the National Register of Historic Places Registration Form* (National Register Bulletin 16A). Complete each item by marking "x" in the appropriate box or by entering the information requested. If an item does not apply to the property being documented, enter "N/A" for "not applicable." For functions, architectural classification, materials, and areas of significance, enter only categories and subcategories from the instructions. Place additional entries and narrative items on continuation sheets (NPS Form 10-900a). Use a typewriter, word processor, or computer, to complete all items.

1. Name of Property

historic name Dallam County Courthouse

other names/site number N/A

2. Location

street & number Fifth and Denrock streets N/A not for publication

city or town Dalhart N/A vicinity

state Texas code TX county Dallam code 111 zip code 79022

3. State/Federal Agency Certification

As the designated authority under the National Historic Preservation Act, as amended, I hereby certify that this nomination request for determination of eligibility meets the documentation standards for registering properties in the National Register of Historic Places and meets the procedural and professional requirements set forth in 36 CFR Part 60. In my opinion, the property meets does not meet the National Register criteria. I recommend that this property be considered significant nationally statewide locally. (See continuation sheet for additional comments.)

Curtis J. Jernell 29 Aug. 1992
Signature of certifying official/Title Date

State Historic Preservation Officer, Texas Historical Commission
State of Federal agency and bureau

In my opinion, the property meets does not meet the National Register criteria. (See continuation sheet for additional comments.)

Signature of certifying official/Title Date

State or Federal agency and bureau

4. National Park Service Certification

I hereby certify that the property is:

- entered in the National Register.
 See continuation sheet.
- determined eligible for the National Register
 See continuation sheet.
- determined not eligible for the National Register.
- removed from the National Register.
- other, (explain:) _____

Signature of the Keeper

Alvina Byers

~~Entered in the~~
~~National Register~~

Date of Action

10/15/92

5. Classification

Ownership of Property
(Check as many boxes as apply)

Category of Property
(Check only one box)

Number of Resources within Property
(Do not include previously listed resources in the count.)

- private
- public-local
- public-State
- public-Federal

- building(s)
- district
- site
- structure
- object

Contributing	Noncontributing	
1	0	buildings
0	0	sites
0	0	structures
0	0	objects
1	0	Total

Name of related multiple property listing
(Enter "N/A" if property is not part of a multiple property listing.)

Number of contributing resources previously listed in the National Register

N/A

0

6. Function or Use

Historic Functions

(Enter categories from instructions)

Current Functions

(Enter categories from instructions)

Government: Courthouse

Government: Courthouse

7. Description

Architectural Classification

(Enter categories from instructions)

Materials

(Enter categories from instructions)

Classical Revival

foundation concrete

walls brick

roof asphalt

concrete

other (cast stone)

Narrative Description

(Describe the historic and current condition of the property on one or more continuation sheets.)

See Continuation Sheets 7-1 and 7-2.

[Handwritten signature]

United States Department of the Interior
National Park Service

National Register of Historic Places Continuation Sheet

Section number 7 Page 1

Dallam County Courthouse
Dalhart, Dallam County, TX

Description:

The 1923 Dallam County Courthouse, in the Texas Panhandle, exhibits features typical of governmental buildings constructed during the resurgence of classicism in the early 20th century. A 3-story red brick building with a half-basement, the courthouse has a rectangular plan and a flat roof. The interior reflects Beaux Arts planning influences with central cross axes and classical detailing. Facing south on Fifth Street in Dalhart, the building occupies a block at the center of the brick-paved town. The site is flat, with a cultivated lawn and several mature trees planted around the building. In excellent condition the courthouse retains its historical and architectural integrity to a high degree.

In the semi-arid region of the Great Plains, Dallam County is prairie land, broken by creeks, none of which are proximate to the courthouse. Dalhart, the county seat, is near the southeast corner of the county. The southern portion of the town (beginning at 11th Street) is in Hartley County. The Fort Worth and Denver and the former Chicago, Rock Island and Gulf (currently the St. Louis-Southwestern) railways intersect in Dalhart about four blocks north of the courthouse. North of the tracks much of the community follows a grid plan oriented on a northwest-southeast diagonal, while south of the tracks the grid plan is laid out on the cardinal directions. (See MAP 8.)

Although the courthouse visually dominates the block, it is not centered but set back so that the primary (south) elevation fronts an extensive lawn, while the rear (north) faces an alley. Vegetation in the region is historically sparse, but the courthouse's modest landscaping scheme includes mature elm trees, juniper and crape myrtles. Historic photographs reveal that such features were introduced with settlement and have always been minimal. Three subordinate monuments on the courthouse grounds include a 1945 memorial to Dalhart high school students who died in World War II (concrete base, bronze plaque and flagpole), a 1986 sesquicentennial commemorative marker (stone base with wrought iron impression of XIT Ranch), and a 1991 Official Texas Historical Marker. (See site plan on MAP 9.)

The 5-bay main (south) facade has a centered, projecting portico supported by four colossal order Ionic columns capped with a classically influenced entablature (see Photograph 1). The double entry doors are surrounded by transom and side lights and capped with a heavy segmental pediment. Windows on either side of the door are 1/1 surmounted by radiating brick voissiors and a keystone. Brick pilasters with cast stone detailing enunciate each 90 degree angle of the building. A cast stone water table encircles the building near its base, as does a cast stone string course above the 2nd level windows and a cast stone denticulated cornice. Simpler cast stone cornice projects above the 3rd level windows, continuing as the entablature above the entry columns. Cast coping outlines the stepped parapet, which has an "Alamotif." Most windows in the building are 12/1, with 4/4 and 3/3 windows denoting utilitarian spaces within. Protective bars shield the clerks offices and the old 3rd floor jail spaces. A circa 1923 photograph shows standard light posts with multiple globes that once stood to either side of this facade's entry stairway; these were removed by about 1940,

United States Department of the Interior
National Park Service

National Register of Historic Places
Continuation Sheet

Section number 7 Page 2

Dallam County Courthouse
Dalhart, Dallam County, TX

according to another historic photograph (see Photographs 2 and 3). A marble cornerstone is at the west corner of this facade (see Photographs 4 and 5).

The east and west facades follow a similar pattern (see Photograph 6). Each has 3 bays with a centered projecting 2-story portico supported by two colossal order Ionic columns and crested with the classically influenced entablature that wraps around the building. Stairwells access the basement entrances, which are multi-paned double doors with transoms and sidelights. Although the rear (north) facade echoes the detailing of the other elevations, it lacks a grandiose entrance (see Photograph 7). It has a small centered entrance to the main floor, (enclosed with a frame vestibule) and a metal fire escape servicing the 2nd and 3rd levels.

A central east/west corridor divides the basement, which is sunk a half-story, into office quadrants. Entry to the basement from the exterior is by the two stairways on the east and west sides of the building (see MAP 10). The main office floor is raised high above the ground and houses county offices as well as the county court room. Primary exterior access to this first floor is from the south side of the building (see MAP 11). On the 2nd and 3rd floors, offices surround the 2-story district courtroom (see MAP 12 and Photograph 8). The balcony of the courtroom is currently used for storage. The interior remains largely intact and exhibits modest classical detailing, such as Ionic columns and deep cornices (see Photograph 9).

The Dallam County Courthouse retains its integrity to a remarkable degree. In particular the property's architectural character (location, setting, design, materials, and workmanship) remains virtually unchanged. With these physical features intact, the building clearly maintains its historic associations and feeling.

8. Statement of Significance

Applicable National Register Criteria

(Mark "x" in one or more boxes for the criteria qualifying the property for National Register listing.)

- A Property is associated with events that have made a significant contribution to the broad patterns of our history.
- B Property is associated with the lives of persons significant in our past.
- C Property embodies the distinctive characteristics of a type, period, or method of construction or represents the work of a master, or possesses high artistic values, or represents a significant and distinguishable entity whose components lack individual distinction.
- D Property has yielded, or is likely to yield, information important in prehistory or history.

Criteria Considerations N/A
(Mark "x" in all the boxes that apply.)

Property is:

- A owned by a religious institution or used for religious purposes.
- B removed from its original location.
- C a birthplace or grave.
- D a cemetery.
- E a reconstructed building, object, or structure.
- F a commemorative property.
- G less than 50 years of age or achieved significance within the past 50 years.

Areas of Significance

(Enter categories from instructions)

Politics/Government and Architecture

Period of Significance

1923-1942

Significant Dates

1923

Significant Person

(Complete if Criterion B is marked above)

N/A

Cultural Affiliation

N/A

Architect/Builder

Smith, J. Roy; Townes, William C.;
Stewart, A.F.

Narrative Statement of Significance See Continuation Sheets 8-3 through 8-5.
(Explain the significance of the property on one or more continuation sheets.)

9. Major Bibliographical References

Bibliography See Cont. Sheet 9-6.

(Cite the books, articles, and other sources used in preparing this form on one or more continuation sheets.)

Previous documentation on file (NPS): N/A

- preliminary determination of individual listing (36 CFR 67) has been requested
- previously listed in the National Register
- previously determined eligible by the National Register
- designated a National Historic Landmark
- recorded by Historic American Buildings Survey # _____
- recorded by Historic American Engineering Record # _____

Primary location of additional data:

- State Historic Preservation Office
- Other State agency
- Federal agency
- Local government
- University
- Other

Name of repository:

Texas Historical Commission, Austin, TX

Dallam County Courthouse
Name of Property

Dallam County, Texas
County and State

10. Geographical Data

Acreage of Property less than one acre

UTM References

(Place additional UTM references on a continuation sheet.)

1

1	3
---	---

7	2	3	2	0	0
---	---	---	---	---	---

3	9	9	3	4	2	0
---	---	---	---	---	---	---

Zone Easting Northing

3

--	--

--	--	--	--	--	--

--	--	--	--	--	--	--

Zone Easting Northing

4

--	--

--	--	--	--	--	--

--	--	--	--	--	--	--

 See continuation sheet

Verbal Boundary Description

(Describe the boundaries of the property on a continuation sheet.)

See Continuation Sheet 10-7.

Boundary Justification

(Explain why the boundaries were selected on a continuation sheet.)

11. Form Prepared By

name/title Amy E. Dase, THC Historian (with research by Patricia Kirkemide)

organization Dallam County Historical Commission date June, 1991; August, 1992

street & number HCR, Box 565 telephone 806/249-2450

city or town Dalhart state TX zip code 79022

Additional Documentation

Submit the following items with the completed form:

Continuation Sheets

Maps

A **USGS map** (7.5 or 15 minute series) indicating the property's location.

A **Sketch map** for historic districts and properties having large acreage or numerous resources.

Photographs

Representative **black and white photographs** of the property.

Additional items

(Check with the SHPO or FPO for any additional items)

Property Owner

(Complete this item at the request of SHPO or FPO.)

name County of Dallam

street & number Dallam County Courthouse telephone 806/249-2450

city or town Dalhart state TX zip code 79022

Paperwork Reduction Act Statement: This information is being collected for applications to the National Register of Historic Places to nominate properties for listing or determine eligibility for listing, to list properties, and to amend existing listings. Response to this request is required to obtain a benefit in accordance with the National Historic Preservation Act, as amended (16 U.S.C. 470 *et seq.*).

Estimated Burden Statement: Public reporting burden for this form is estimated to average 18.1 hours per response including time for reviewing instructions, gathering and maintaining data, and completing and reviewing the form. Direct comments regarding this burden estimate or any aspect of this form to the Chief, Administrative Services Division, National Park Service, P.O. Box 37127, Washington, DC 20013-7127; and the Office of Management and Budget, Paperwork Reductions Projects (1024-0018), Washington, DC 20503.

United States Department of the Interior
National Park ServiceNational Register of Historic Places
Continuation SheetSection number 8 Page 3Dallam County Courthouse
Dalhart, Dallam County, TX

Statement of Significance:

Texas courthouses, as the pre-eminent building type associated with local government in Texas during the mid 19th through mid 20th centuries, symbolize the general prosperity, aspirations, and sophistication of the counties in which they stand. Serving as the local seat of justice since 1923, the Dallam County Courthouse played a pivotal role in county politics and meets Criterion A in the area of Politics/Government. An unprecedented building in the county and the town, the courthouse also meets Criterion C in the area of Architecture as an exceptional local example of Classical Revival design.

In the extreme northwest corner of the Texas Panhandle, Dallam County is bounded by New Mexico on the west and Oklahoma on the north. Parts of this and nine other north Texas counties comprised the three million acre tract the state traded in 1882 to finance construction of the state capitol in Austin. The resulting XIT Ranch once operated on much of the land now chartered for Dallam County.

The Fort Worth and Denver City Railroad linked Fort Worth with Texline, near the northwest corner of the county in 1888. Officially organized in 1891, Dallam County was named for James Wilmar Dallam, a prominent Texas lawyer and editor. With approximately 112 residents in the county, Texline served as county seat with a 2-story frame courthouse/school.

In early 1901 the Chicago, Rock Island, and Mexico Railway (later the Chicago, Rock Island, and Gulf Railway) built west from Liberal, Kansas, and crossed the Fort Worth and Denver City line at the southern boundary of the county, a juncture that hastily changed names in early 1901 from Twist, to Twist Junction, and then to Denrock. By May 1901 the community, which straddled both Dallam and Hartley counties, became known as Dalhart. In 1903 the County Commissioners' Court ordered that a new courthouse be constructed on Block 18 of the original townsite; John A. White of Vernon was awarded the building contract (see 8-5; demolished circa 1922).

A 1919 editorial in the Dalhart Texan stressed the need for a modern courthouse facility. Commissioners issued warrants to fund the project, but construction was enjoined in 1920. Postponements and litigation ensued. Finally, a \$150,000 bond issue passed in June 1922 enabling the court to hire J. Roy Smith and William C. Townes of Amarillo as architects and A.F. Stewart of the Stewart Construction Company in Oklahoma City as contractor for the new courthouse. They selected Block 51 of the original townsite as its location.

Smith and Townes elected to follow the well established architectural trend for public buildings by designing a modified classical temple. The 1893 Columbian Exposition aroused interest in reviving classical styles that became prevalent throughout the country during the first half of the 20th century, particularly for public buildings. Like other public buildings constructed around this time in the Texas Panhandle, such as the Hartley County Courthouse (1906), the Hale County Courthouse (1910), the Roberts County Courthouse (1913), the Taylor County Courthouse (1914), the Crosby County Courthouse (1914), the Lynn County Courthouse (1916), the Sherman County Courthouse (1922), and the Wheeler County Courthouse (1925), directness and simplicity

United States Department of the Interior
National Park Service

National Register of Historic Places
Continuation Sheet

Section number 8 Page 4

Dallam County Courthouse
Dalhart, Dallam County, TX

characterize this temple. Typical of Classical Revival design, the Dallam County Courthouse employs a symmetrical rectangular plan, broad expanses of plain wall surfaces, and balanced fenestration. Its rudimentary cubical form is articulated by colossal order Ionic columns that support a heavy cornice, and brick pilasters that reinforce the classical motif. Cast stone classical details, such as the window sill consoles, dentils, coping and escutcheon, are emphasized against the red brick. The central facade parapets, influenced by Mission Revival design, mimic the roof parapets found on some Spanish colonial-era mission buildings. Mission-styled architecture commonly borrowed typical Hispanic design elements, like curvilinear parapets, and adapted them to embellish more traditional buildings, particularly in the American Southwest.

The plan of this building reveals a Beaux Arts arrangement in spatial hierarchy by raising the main floor high above the ground with an entry point from the south facade of the building. The basement is sunk a half-story with access from two stairways from the east and west sides of the building. This simple innovation assisted in adapting the basement as more efficient public space, while a majestic staircase endowed prominence to the main entrance.

The subsequent history of the courthouse has been one of few sensational trials or great events. However, as in most counties, the courthouse was the nucleus of political and social activity. Courthouse hearings have been generally for crimes of stealing cattle, bootlegging and gaming, according to Hartley County Historical Commission Chairman Patricia Kirkemide.

The building retains its historic integrity to its period of significance, 1923-1942, with some interior modifications such as ramps and an elevator added in 1987 to permit accessibility for disabled citizens. A monumental building in this small community, the Dallam County Courthouse is worthy of preservation because of its contributions to the county's historical and architectural legacy.

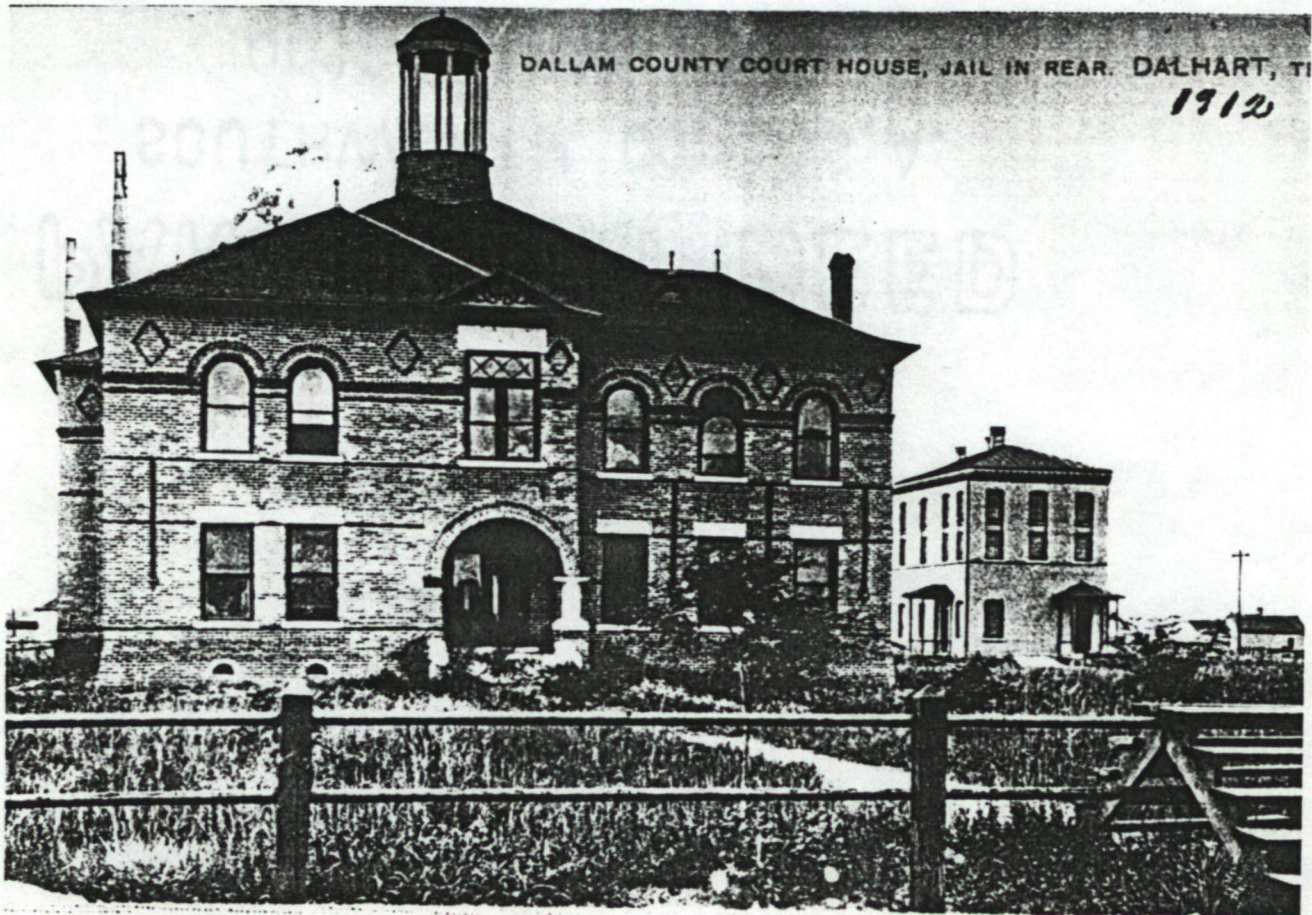
United States Department of the Interior
National Park Service

National Register of Historic Places Continuation Sheet

Section number 8 Page 5

Dallam County Courthouse
Dalhart, Dallam County, TX

1903 Dallam County Courthouse
Photograph taken in 1912



United States Department of the Interior
National Park Service

National Register of Historic Places
Continuation Sheet

Section number 9 Page 6

Dallam County Courthouse
Dalhart, Dallam County, TX

BIBLIOGRAPHY

Dalhart Texan. Dalhart, Texas. 23 May 1919, and various issues from 1923.

Dalhart-Hartley Historical Association. A Tale of Two Counties. Lubbock, Texas: private printing, 1986.

Dallam County Commissioners' Court Minutes, Volumes I and IV.

Hartley County Commissioners' Court Minutes, Volume I.

Kirkemide, Patricia B. "History of Dallam County, Texas Courthouses." On file at Texas Historical Commission, Austin, Texas n.d.

Maxson, Peter. "Hartley County Courthouse and Jail, National Register of Historic Places Registration Form." On file at Texas Historical Commission, Austin, Texas, n.d.

Reynolds, Mrs. Levi. "Dallam County Courthouse." On file at XIT Museum, Dalhart, Texas: n.d.

Dallam County Courthouse, Recorded Texas Historical Marker, on file at the Texas Historical Commission, 1991.

Robinson, Willard B. The People's Architecture; Texas Courthouses, Jails, and Municipal Buildings. Austin, Texas: Texas State Historical Association, 1983.

Webb, Walter Prescott, ed. The Handbook of Texas, Volume I. Austin, Texas: Texas State Historical Association, 1952.

Welch, June R. and J. Larry Nance. The Texas Courthouse. Dallas: G.L.A. Press, 1971.

United States Department of the Interior
National Park Service

National Register of Historic Places Continuation Sheet

Section number 10 Page 7

Dallam County Courthouse
Dalhart, Dallam County, TX

Verbal Boundary Description:

Dalhart Town Company Subdivision, Block 51, Lots 7-18.

Boundary Justification:

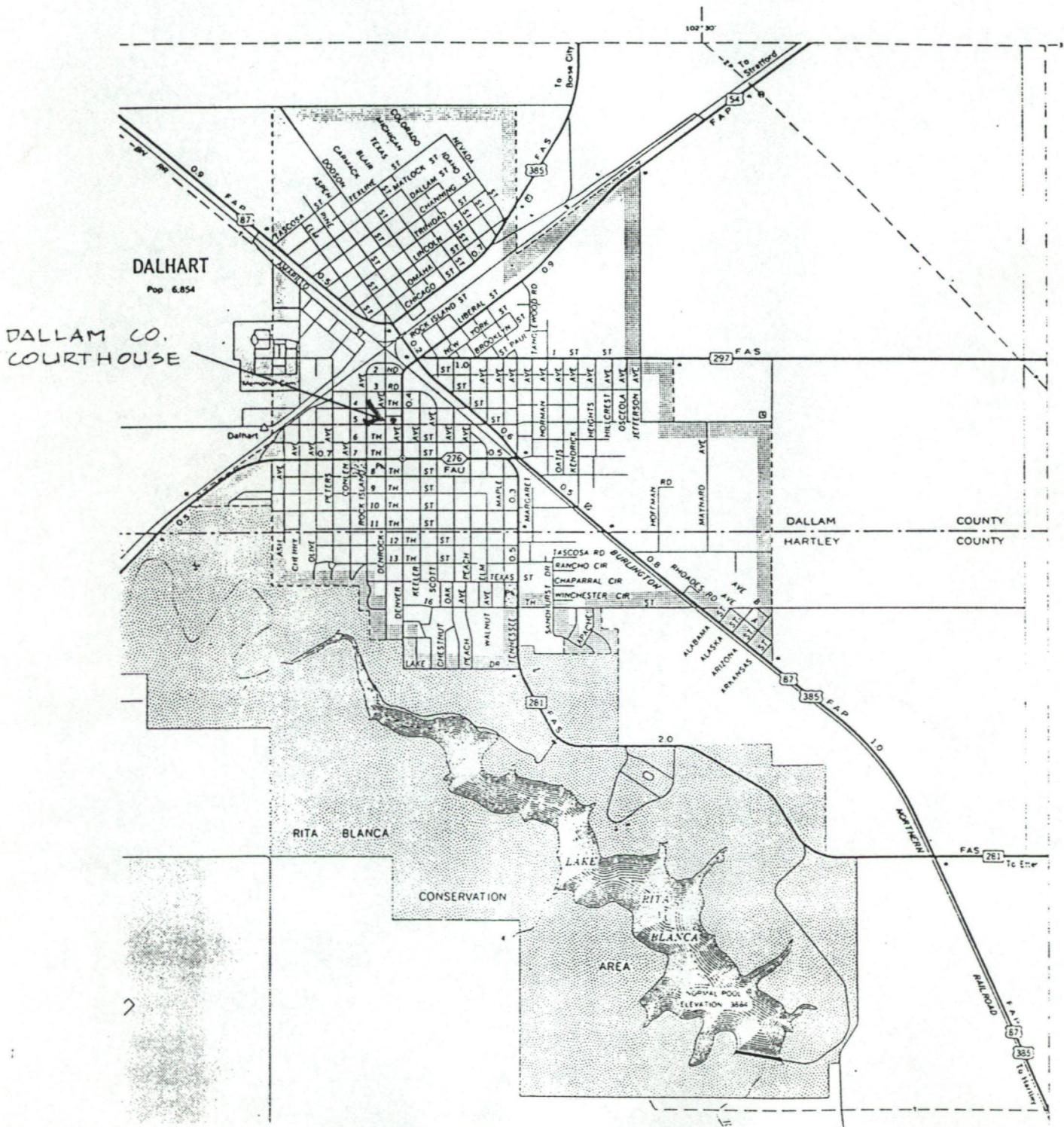
The boundary includes the area that has been historically associated with the property and that retains its historic and architectural integrity.

United States Department of the Interior
National Park Service

National Register of Historic Places Continuation Sheet

Section number MAPS Page 8

Dallam County Courthouse
Dalhart, Dallam County, TX



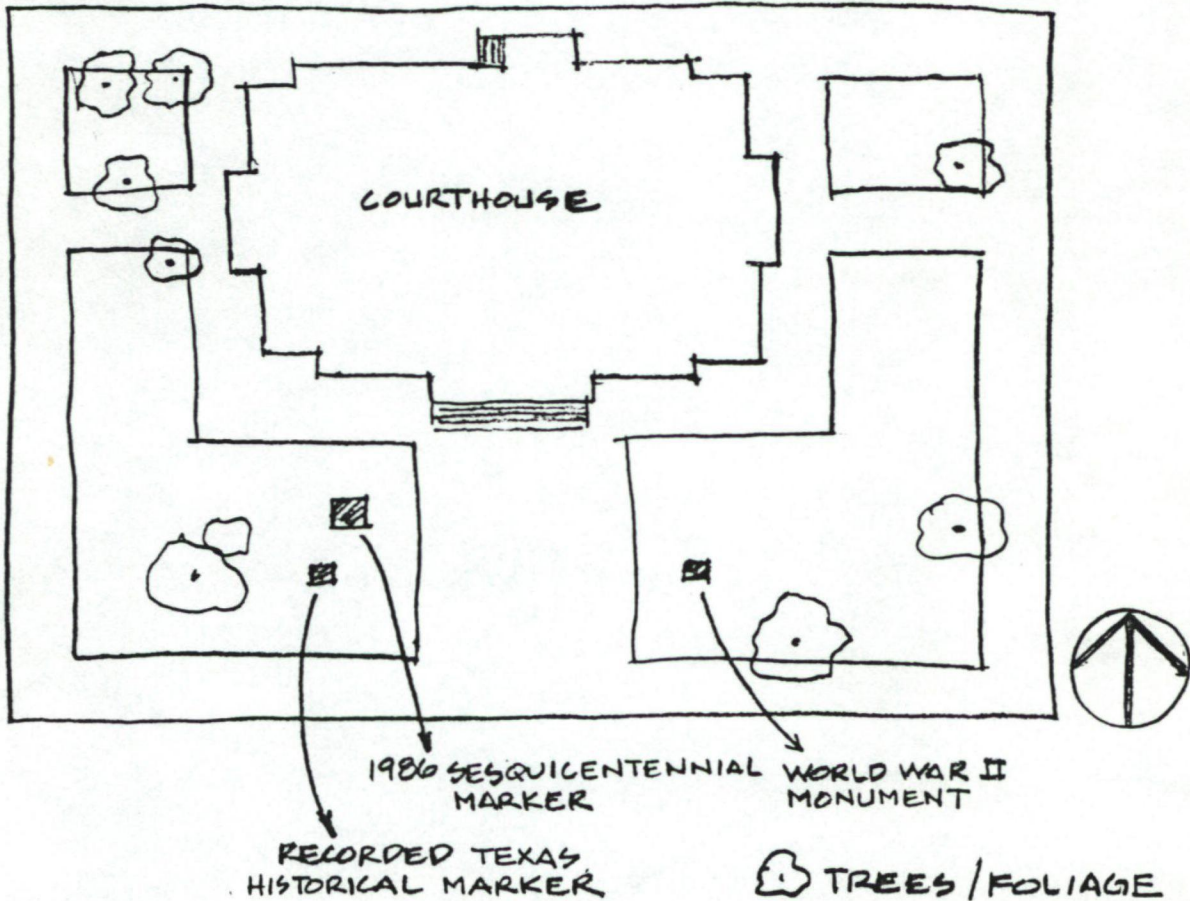
United States Department of the Interior
National Park Service

National Register of Historic Places Continuation Sheet

Section number _____ MAPS Page 9

Dallam County Courthouse
Dalhart, Dallam County, TX

DALLAM CO. COURTHOUSE
DALHART, DALLAM CO., TEXAS
SITE PLAN

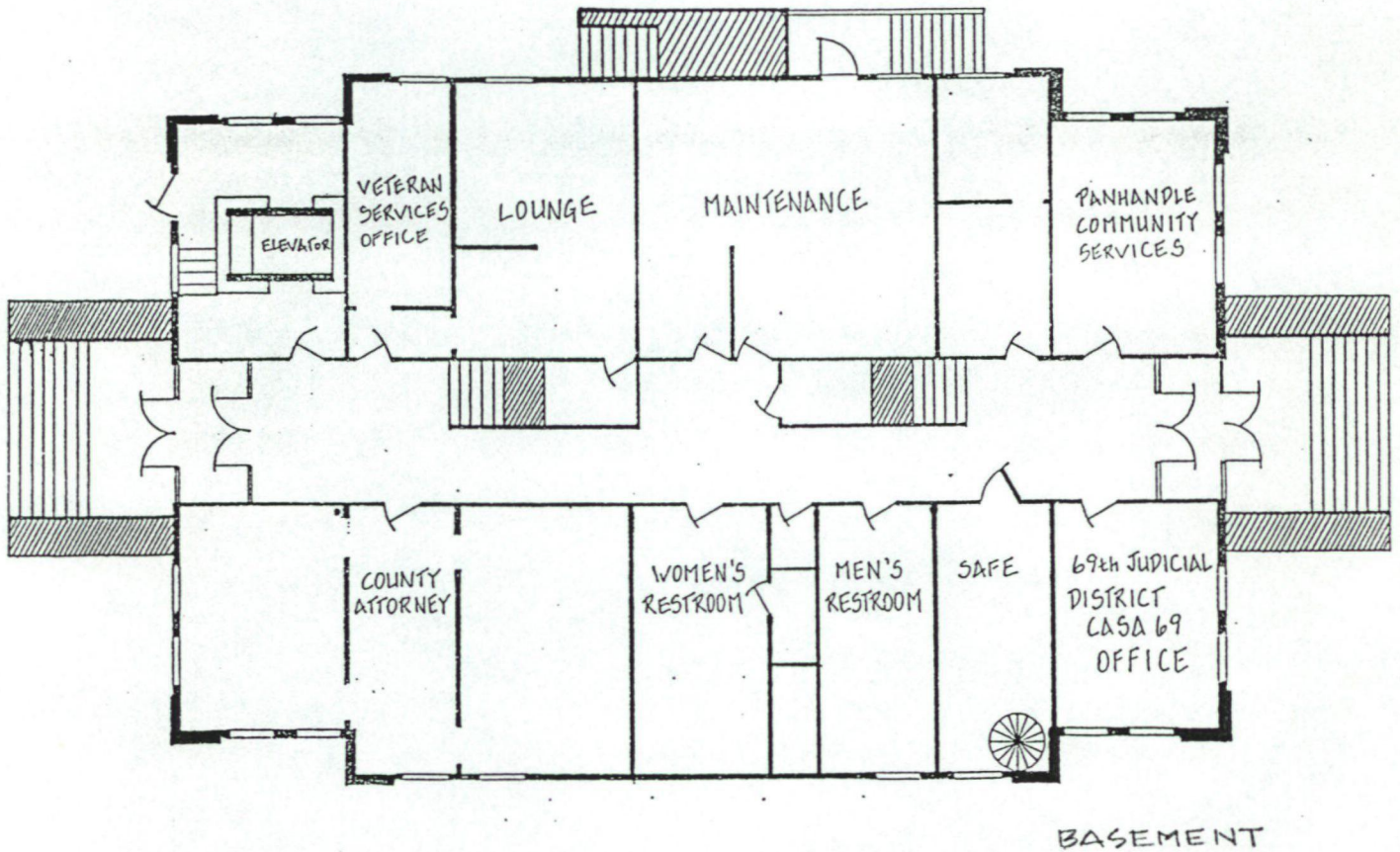


United States Department of the Interior
National Park Service

National Register of Historic Places Continuation Sheet

Section number MAPS Page 10

Dallam County Courthouse
Dalhart, Dallam County, TX



DALLAM COUNTY COURTHOUSE
DALHART, DALLAM CO., TEXAS

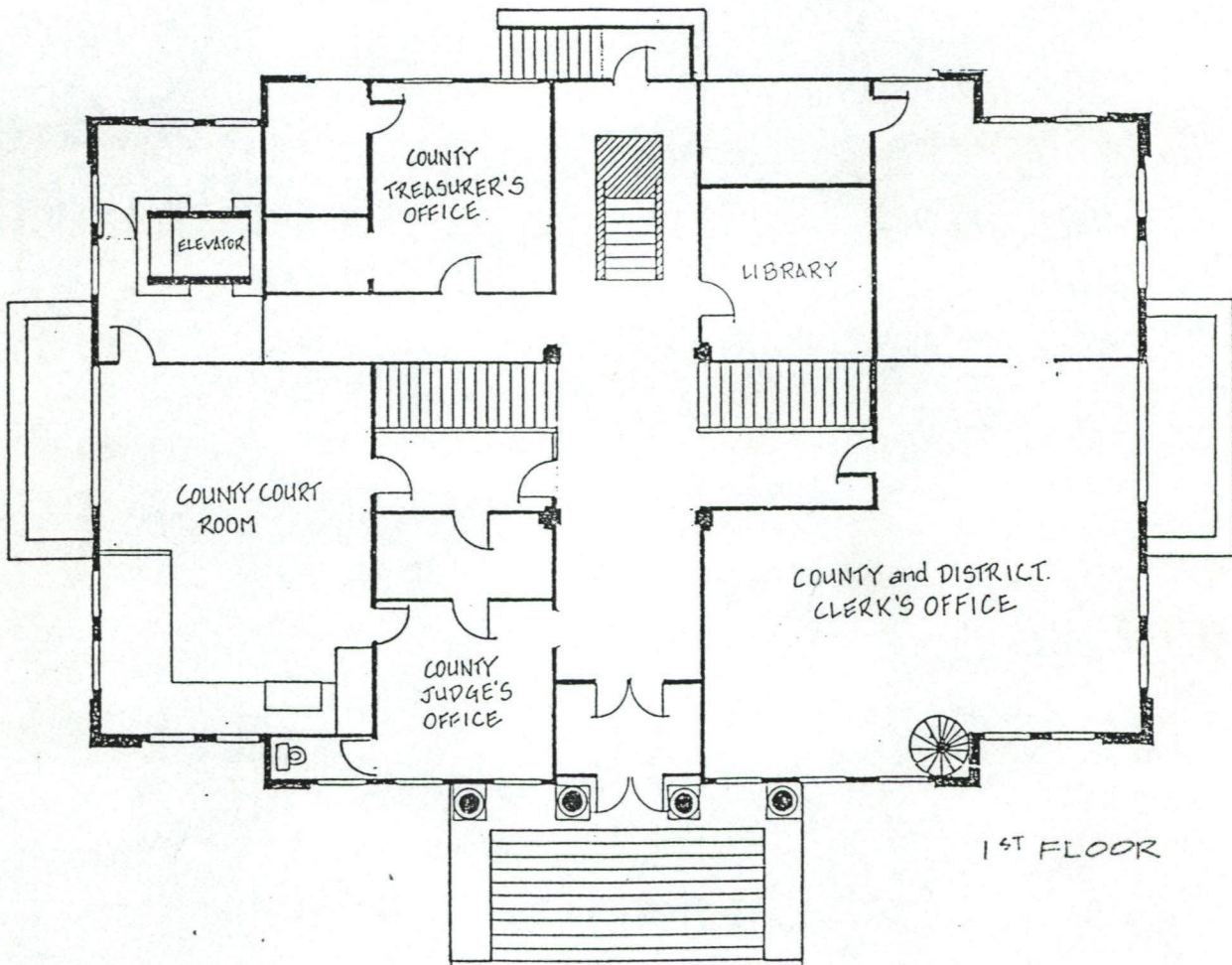


United States Department of the Interior
National Park Service

National Register of Historic Places Continuation Sheet

Section number MAPS Page 11

Dallam County Courthouse
Dalhart, Dallam County, TX



DALLAM COUNTY COURTHOUSE
DALHART, DALLAM CO., TEXAS



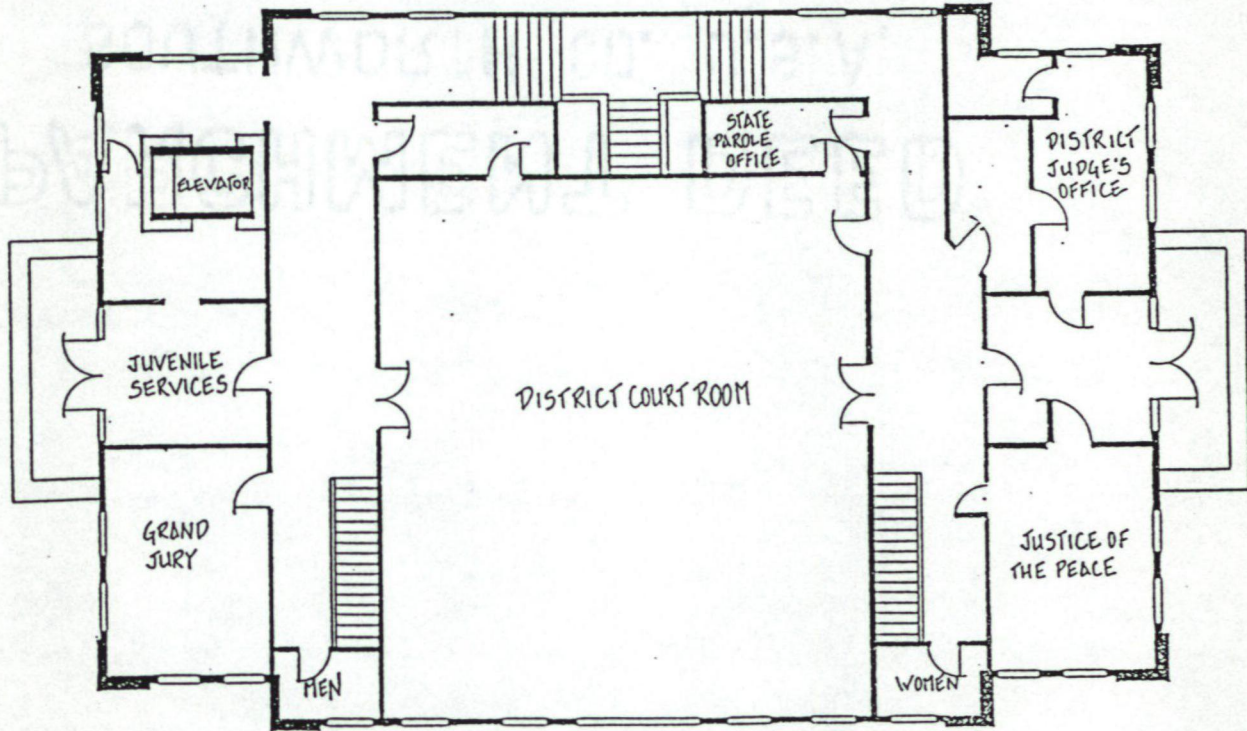
United States Department of the Interior
National Park Service

National Register of Historic Places Continuation Sheet

MAPS 12

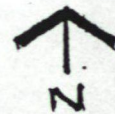
Section number _____ Page _____

Dallam County Courthouse
Dalhart, Dallam County, TX



2ND FLOOR

DALLAM COUNTY COURTHOUSE
DALHART, DALLAM CO., TEXAS

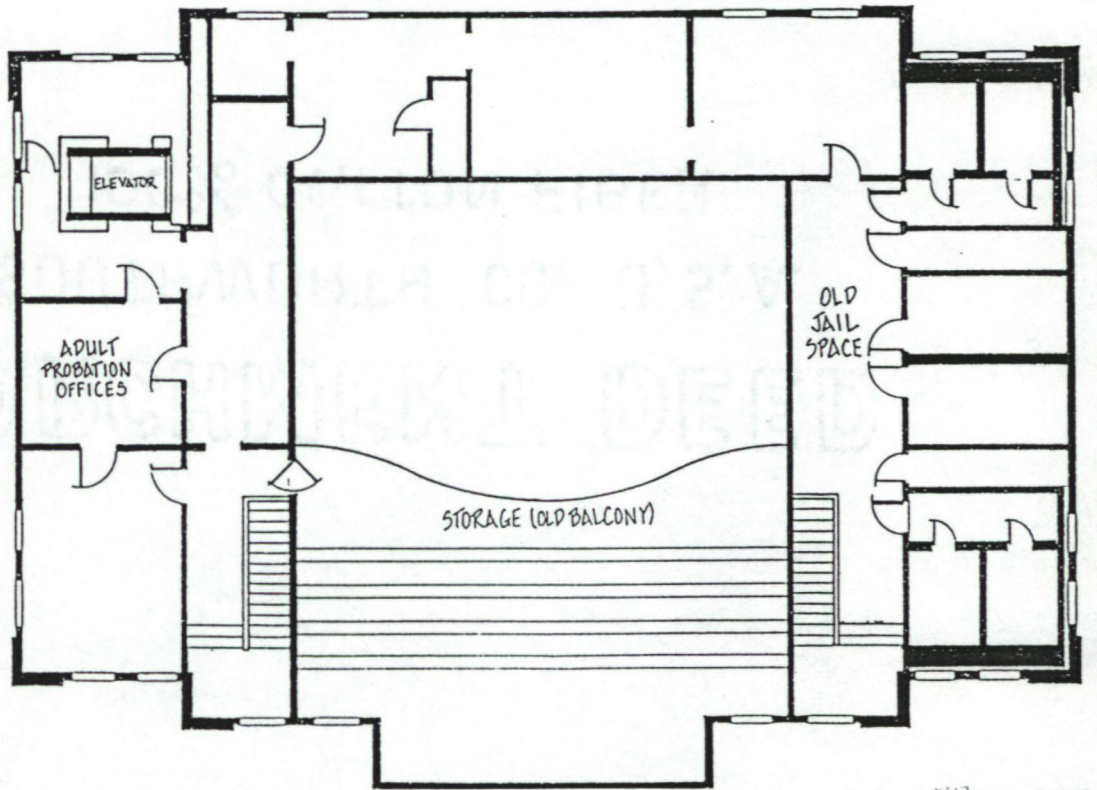


United States Department of the Interior
National Park Service

National Register of Historic Places Continuation Sheet

Section number _____ MAPS _____ Page 13

Dallam County Courthouse
Dalhart, Dallam County, TX



3RD FLOOR

DALLAM COUNTY COURTHOUSE
DALHART, DALLAM CO., TEXAS



United States Department of the Interior
National Park Service

National Register of Historic Places
Continuation Sheet

Section number _____ PHOTOS 14
Page _____

Dallam County Courthouse
Dalhart, Dallam County, TX

PHOTOGRAPH LOG

Dallam County Courthouse
Fifth and Denrock streets
Dalhart, Dallam County, Texas
Photographed by Faye Plank
August 1990
Negative on file at Dalhart Daily News, 410 Denrock, 79022
South facade, camera facing north
Photograph 1 of 9

Dallam County Courthouse
Fifth and Denrock streets
Dalhart, Dallam County, Texas
Photographer unknown
Circa 1923
Negative on file at Rita Blanca Studio, 418 Denrock, 79022
Southeast oblique, camera facing northwest
Photograph 2 of 9

Dallam County Courthouse
Fifth and Denrock streets
Dalhart, Dallam County, Texas
Photographer unknown
Circa 1940
Negative on file at Rita Blanca Studio, 418 Denrock, 79022
Southeast oblique, camera facing northwest
Photograph 3 of 9

Dallam County Courthouse
Fifth and Denrock streets
Dalhart, Dallam County, Texas
Photographed by Faye Plank
August 1990
Negative on file Dalhart Daily News, 410 Denrock, 79022
Cornerstone
Photograph 4 of 9

Dallam County Courthouse
Fifth and Denrock streets
Dalhart, Dallam County, Texas
Photographed by Faye Plank
August 1990
Negative on file at Dalhart Daily News, 410 Denrock, 79022
Builders plate
Photograph 5 of 9

Dallam County Courthouse
Fifth and Denrock streets
Dalhart, Dallam County, Texas
Photographed by Faye Plank
August 1990
Negative on file at Dalhart Daily News, 410 Denrock, 79022

United States Department of the Interior
National Park Service

National Register of Historic Places
Continuation Sheet

PHOTOS 15

Dallam County Courthouse
Dalhart, Dallam County, TX

Section number _____ Page _____

East facade, camera facing west
Photograph 6 of 9

Dallam County Courthouse
Fifth and Denrock streets
Dalhart, Dallam County, Texas
Photographed by Faye Plank
August 1990

Negative on file at Dalhart Daily News, 410 Denrock, 79022
North facade, camera facing southeast
Photograph 7 of 9

Dallam County Courthouse
Fifth and Denrock streets
Dalhart, Dallam County, Texas
Photographed by Faye Plank
August 1990

Negative on file at Dalhart Daily News, 410 Denrock, 79022
Interior of district court room
Photograph 8 of 9

Dallam County Courthouse
Fifth and Denrock streets
Dalhart, Dallam County, Texas
Photographed by Faye Plank
August 1990

Negative on file at Dalhart Daily News, 410 Denrock, 79022
Interior of interior column and cornice detail
Photograph 9 of 9

UNITED STATES DEPARTMENT OF THE INTERIOR
NATIONAL PARK SERVICE

NATIONAL REGISTER OF HISTORIC PLACES
EVALUATION/RETURN SHEET

REQUESTED ACTION: NOMINATION

PROPERTY NAME: Dallam County Courthouse

MULTIPLE NAME:

STATE & COUNTY: TEXAS, Dallam

DATE RECEIVED: 9/14/92 DATE OF PENDING LIST: 9/29/92
DATE OF 16TH DAY: 10/16/92 DATE OF 45TH DAY: 10/29/92
DATE OF WEEKLY LIST:

REFERENCE NUMBER: 92001375

NOMINATOR: STATE

REASONS FOR REVIEW:

APPEAL: N DATA PROBLEM: N LANDSCAPE: N LESS THAN 50 YEARS: N
OTHER: N PDIL: N PERIOD: N PROGRAM UNAPPROVED: N
REQUEST: N SAMPLE: N SLR DRAFT: N NATIONAL: N

COMMENT WAIVER: N

ACCEPT RETURN REJECT 10/15/92 DATE

Entered in the
National Register

ABSTRACT/SUMMARY COMMENTS:

RECOM./CRITERIA _____
REVIEWER _____
DISCIPLINE _____
DATE _____

DOCUMENTATION see attached comments Y/N see attached SLR Y/N

CLASSIFICATION

___count ___resource type

STATE/FEDERAL AGENCY CERTIFICATION

FUNCTION

___historic ___current

DESCRIPTION

___architectural classification
___materials
___descriptive text

SIGNIFICANCE

Period Areas of Significance--Check and justify below

Specific dates Builder/Architect
Statement of Significance (in one paragraph)

___summary paragraph
___completeness
___clarity
___applicable criteria
___justification of areas checked
___relating significance to the resource
___context
___relationship of integrity to significance
___justification of exception
___other

BIBLIOGRAPHY

GEOGRAPHICAL DATA

___acreage ___verbal boundary description
___UTMs ___boundary justification

ACCOMPANYING DOCUMENTATION/PRESENTATION

___sketch maps ___USGS maps ___photographs ___presentation

OTHER COMMENTS

Questions concerning this nomination may be directed to

_____ Phone _____

Signed _____ Date _____



(3) DALLAM COUNTY COURTHOUSE - SOUTH ENTRANCE

DALLAM COUNTY COURTHOUSE
FIFTH & DENROCK STREETS
DALHART, DALLAM CO., TEXAS

PHOTOGRAPH 1 of 9



DALHART COUNTY COURTHOUSE, DALHART, TEXAS

DALLAM COUNTY COURTHOUSE
FIFTH & DENROCK STREETS
DALHART, DALLAM CO., TEXAS

PHOTOGRAPH 2 of 9



(4)
DALLAM COUNTY COURTHOUSE - WEST ENTRANCE

DALLAM COUNTY COURTHOUSE
FIFTH & DENROCK STREETS
DALHART, DALLAM CO., TEXAS

PHOTOGRAPH 3 of 9

DALLAM COUNTY

CREATED 1876. ORGANIZED 1891.

NAMED FOR JAMES W. DALLAM WHO WAS
BORN IN BALTIMORE SEPT. 24. 1818.

EDUCATED AT BROWN UNIVERSITY.

CAME TO TEXAS 1839. AUTHOR OF
DALLAM'S DIGEST OF THE DECISIONS OF
THE SUPREME COURT OF THE REPUBLIC
OF TEXAS. DIED AUG. 20. 1847.

⑤ DALLAM COUNTY COURT HOUSE

DALLAM COUNTY COURTHOUSE
FIFTH & DENROCK STREETS
DALHART, DALLAM CO., TEXAS

PHOTOGRAPH 4 of 9

A. M. REESE. County Judge.

W. B. HUDSPETH. Com. Precinct No. 1

F. D. DULANEY. Com. Precinct No. 2

C. J. ROBERTS. Com. Precinct No. 3

PETER. ROGALSKY. Com. Precinct No. 4

SMITH & TOWNES. Architects

A. F. STEWART CONSTRUCTION CO

Contractors.

⑥ DALLAM COUNTY COURT HOUSE

DALLAM COUNTY COURTHOUSE
FIFTH & DENROCK STREETS
DALHART, DALLAM CO., TEXAS

PHOTOGRAPH 5 of 9.




DALLAM COUNTY

① DALLAM COUNTY COURT HOUSE

East Entrance

DALLAM COUNTY COURTHOUSE
FIFTH & DENROCK STREETS
DALHART, DALLAM CO., TEXAS

PHOTOGRAPH 6 of 9 

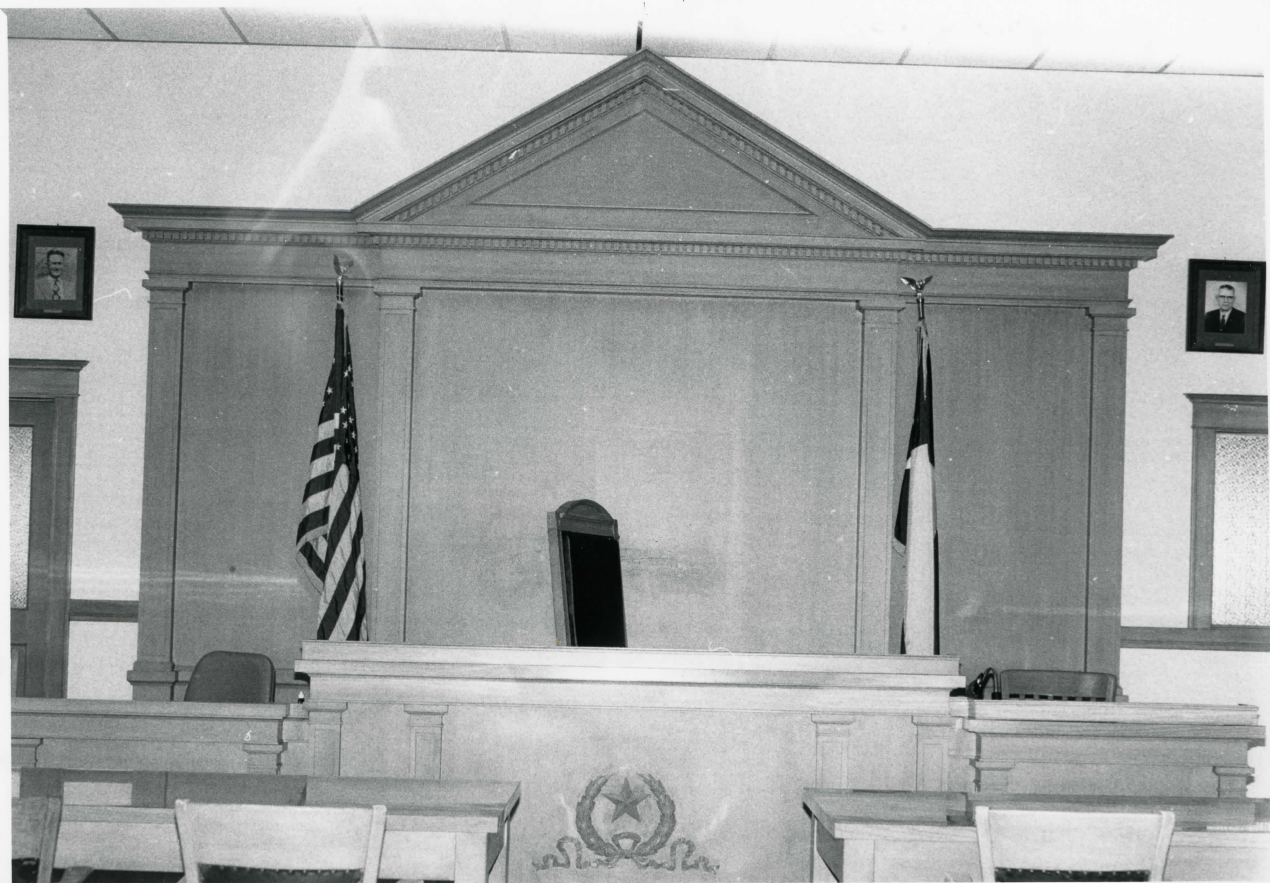


② DALLAM COUNTY
COURT HOUSE

North Side (Back)

DALLAM COUNTY COURTHOUSE
FIFTH & DENROCK STREETS
DALHART, DALLAM CO., TEXAS

PHOTOGRAPH 7 of 9



Top
District Courtroom Dallam County
Golden Oak Fixtures

DALLAM COUNTY COURTHOUSE
FIFTH & DENROCK STREETS
DALLHART, DALLAM CO., TEXAS

PHOTOGRAPH 8 of 9 8

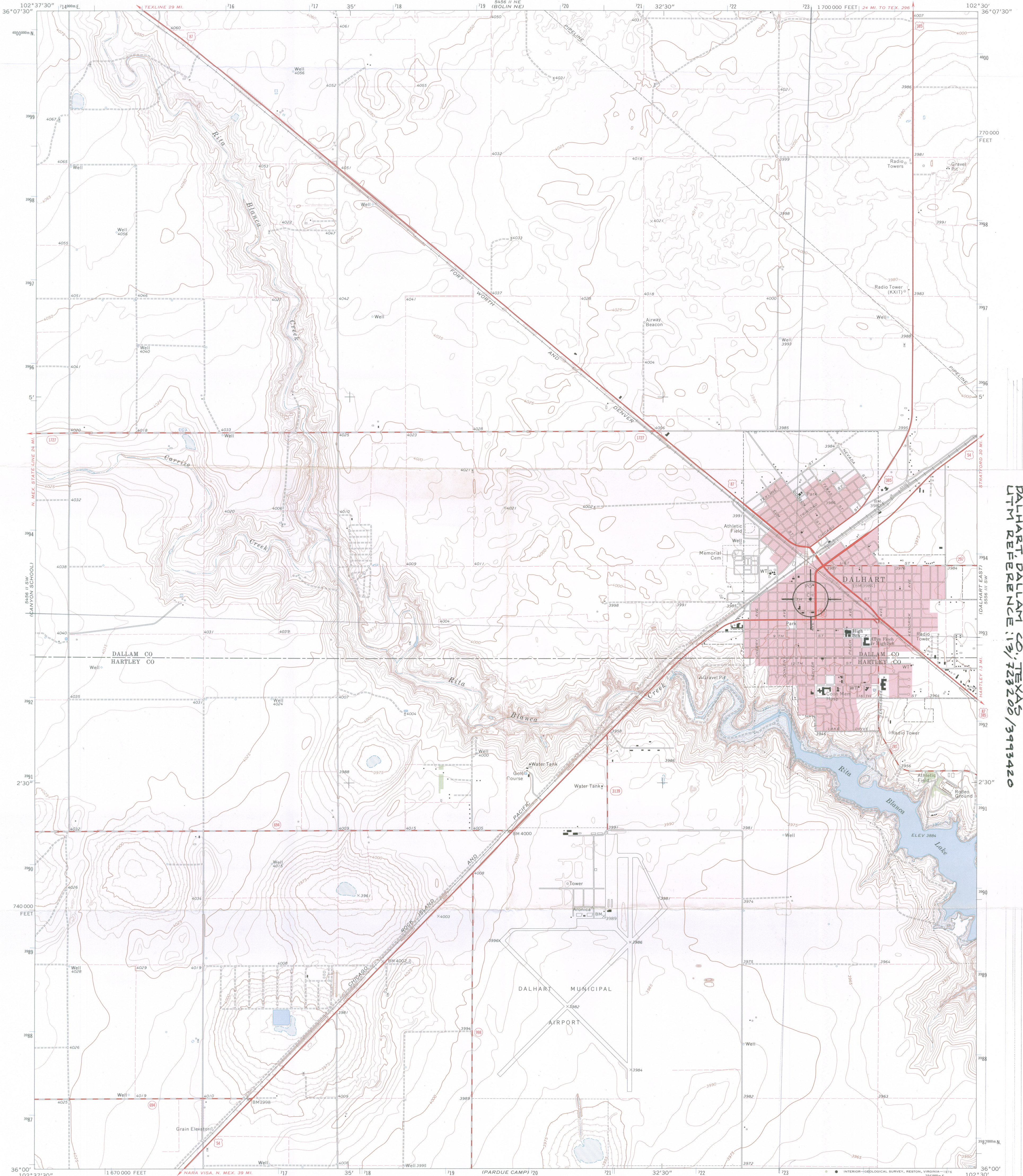


Dallam County Courthouse -
Decorative cornice pieces in 2nd
floor hallway.

(Photo by Faye Plank)

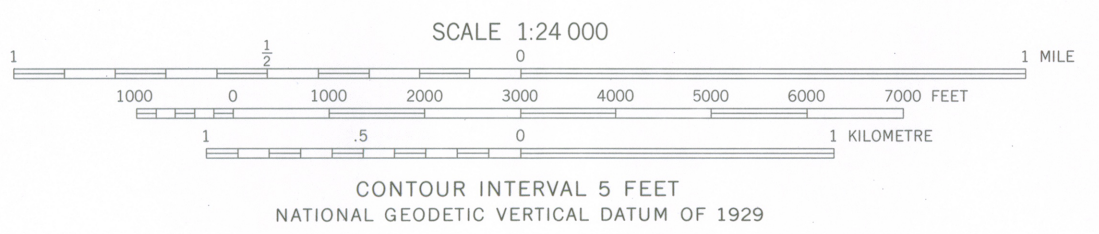
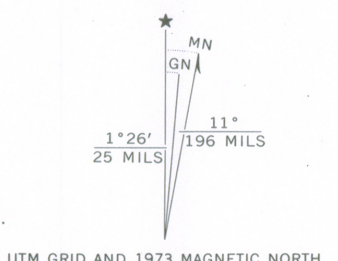
DALLAM COUNTY COURTHOUSE
FIFTH & DENROCK STREETS
DALLHART, DALLAM CO., TEXAS

PHOTOGRAPH 9 of 9 9



DALLAM COUNTY COURTHOUSE
FIFTH & DENROCK
DALHART, DALLAM
UTM REFERENCE: 19J 723 200 / 3913420

Mapped, edited, and published by the Geological Survey
Control by USGS and NOS/NOAA
Topography by photogrammetric methods from aerial
photographs taken 1971. Field checked 1973
Projection and 10,000-foot grid ticks: Texas
coordinate system, north zone (Lambert conformal conic)
1000-metre Universal Transverse Mercator grid ticks,
zone 13, shown in blue. 1927 North American datum
Red tint indicates areas in which only landmark buildings are shown
Fine red dashed lines indicate selected fence lines
Areas covered by dashed light-blue pattern are subject
to controlled inundation



ROAD CLASSIFICATION

Primary highway, hard surface	Light-duty road, hard or improved surface
Secondary highway, hard surface	Unimproved road
Interstate Route	U. S. Route
	State Route

THIS MAP COMPLIES WITH NATIONAL MAP ACCURACY STANDARDS
FOR SALE BY U.S. GEOLOGICAL SURVEY, DENVER, COLORADO 80225, OR RESTON, VIRGINIA 22092
A FOLDER DESCRIBING TOPOGRAPHIC MAPS AND SYMBOLS IS AVAILABLE ON REQUEST



3602 211 DALHART WEST, TEX.
N3600-W10230/7.5

1973
AMS 5456 II SE-SERIES 9882