

PH0691895

DATA SHEET

UNITED STATES DEPARTMENT OF THE INTERIOR
NATIONAL PARK SERVICE

FOR NPS USE ONLY	
RECEIVED	APR 29 1976
DATE ENTERED	JUL 30 1976

**NATIONAL REGISTER OF HISTORIC PLACES
INVENTORY -- NOMINATION FORM**

SEE INSTRUCTIONS IN *HOW TO COMPLETE NATIONAL REGISTER FORMS*
TYPE ALL ENTRIES -- COMPLETE APPLICABLE SECTIONS

1 NAME

**** HISTORIC**

AND/OR COMMON

Shackelford County Courthouse Historic District

2 LOCATION

roughly bounded by S. 1st, S. 4th, S. Jacobs, & S. Pecan Sts.

STREET & NUMBER Courthouse Square, bounded by South Main Street on the west, Second Street on the north, Walnut on the east, Third on the south.

CITY, TOWN	Albany	VICINITY OF	CODE	048	CONGRESSIONAL DISTRICT	17--Omar Burleson
STATE	Texas	COUNTY	CODE	Shackelford	417	

3 CLASSIFICATION

CATEGORY	OWNERSHIP	STATUS	PRESENT USE
<input checked="" type="checkbox"/> DISTRICT	<input checked="" type="checkbox"/> PUBLIC	<input checked="" type="checkbox"/> OCCUPIED	<input type="checkbox"/> AGRICULTURE
<input type="checkbox"/> BUILDING(S)	<input checked="" type="checkbox"/> PRIVATE	<input type="checkbox"/> UNOCCUPIED	<input checked="" type="checkbox"/> COMMERCIAL
<input type="checkbox"/> STRUCTURE	<input type="checkbox"/> BOTH	<input type="checkbox"/> WORK IN PROGRESS	<input type="checkbox"/> EDUCATIONAL
<input type="checkbox"/> SITE	PUBLIC ACQUISITION	ACCESSIBLE	<input type="checkbox"/> ENTERTAINMENT
<input type="checkbox"/> OBJECT	<input type="checkbox"/> IN PROCESS	<input type="checkbox"/> YES: RESTRICTED	<input checked="" type="checkbox"/> GOVERNMENT
	<input type="checkbox"/> BEING CONSIDERED	<input checked="" type="checkbox"/> YES: UNRESTRICTED	<input type="checkbox"/> INDUSTRIAL
		<input type="checkbox"/> NO	<input type="checkbox"/> MILITARY
			<input type="checkbox"/> MUSEUM
			<input type="checkbox"/> PARK
			<input checked="" type="checkbox"/> PRIVATE RESIDENCE
			<input checked="" type="checkbox"/> RELIGIOUS
			<input type="checkbox"/> SCIENTIFIC
			<input type="checkbox"/> TRANSPORTATION
			<input type="checkbox"/> OTHER:

4 OWNER OF PROPERTY

NAME Multiple Ownership

STREET & NUMBER

CITY, TOWN

STATE

VICINITY OF

5 LOCATION OF LEGAL DESCRIPTION

COURTHOUSE, REGISTRY OF DEEDS, ETC. Shackelford County Courthouse

STREET & NUMBER

CITY, TOWN

Albany

STATE Texas 76430

6 REPRESENTATION IN EXISTING SURVEYS

TITLE Texas Historical Survey

DATE

1974

FEDERAL STATE COUNTY LOCAL

DEPOSITORY FOR SURVEY RECORDS

Texas Historical Commission

CITY, TOWN

Austin

STATE Texas 78711

7 DESCRIPTION ATA4

CONDITION

- EXCELLENT
- GOOD
- FAIR
- DETERIORATED
- RUINS
- UNEXPOSED

CHECK ONE

- UNALTERED
- ALTERED

CHECK ONE

- ORIGINAL SITE
- MOVED
- DATE _____

DESCRIBE THE PRESENT AND ORIGINAL (IF KNOWN) PHYSICAL APPEARANCE

1. The Shackelford County Courthouse, the central building of the historic district, is in the Victorian style but of a design superior to most of its contemporaries in that its mass and proportions are better. The architect, J. E. Flanders of Dallas, achieved this by a more studied relationship of voids to solids, eschewing the highly elongated windows common to the style and avoiding the abundance of extraneous ornamentation usually appended to structures of the period. Without loss of any of the flavor of the Victorian, a feeling of massive solidity has been gained from the sheer size of the blocks of stone; those of the trim are skillfully dressed to give an interesting contrast to the rough-faced ashlar of the walls.

The major facades on the north and south are of five-part composition with the minor ones on the east and west in three parts. The corner compartments project in both directions and the three exterior corners of each have finely dressed quoins through the entire three story. Dressed stringcourses encircle the building at the level of the first floor and at the levels of the sills of the windows of the second and third story. Several vermiculated stones give variety to the doorways.

The window heads of the second and third stories are segmental arches, each with a keystone of normal proportions and a single wide voussoir on each side. The heads of the first-story windows are actually curved lintels of limestone with vee-grooves encised to simulate the voussoirs of segmental arches. Five handsome chimneys of dressed stone form the outlets for the flues of the dozen or so stoves, now long gone, required to heat the building. Other examples of the excellent stone cutting which should not be overlooked are the high splash blocks.

The four corner compartments have hipped roofs with each eave line broken by a small gable containing a trihedron. The wide overhang of the cornice is supported by large consoles with modillions in series between them. Each section of roof is surmounted by a small catwalk surrounded by an ornamental iron fence. A similar but higher railing serves the walkway around the base of the clock tower. The tower has a steep pyramidal roof. The present roof covering of the building is copper.

2. The Matthews Memorial Presbyterian Church is a simple rectangular building of rough-faced local limestone, light buff in color. The entrance is by way of a corner tower, stone up to the sills of the belfry openings which are in pairs of lancets on each of the four sides; the upper structure of the belfry is of wood, faced with a pattern of wooden shingles in the Victorian manner. The windows of the building have pointed arches while those of the two entrance doors are round.

The original roof was unusual in that it was gabled at the west facade but hipped at the east end. In the remodelling of 1954-1955, the east gable was constructed and the chimney, off axis, was taken down to the height of the old eaves, warped northward to the axis of the building and built to extend above the roof ridge, supported by a stone arch on corbels surrounding a small round window containing new stained glass. The lunettes in the roof are original but the stained glass in them dates from the remodelling. All other stained glass is original.

The roof covering was of wood shingles and the same material was used for the remodelled roof although the eaves trough with cornice was then changed to lead-coated copper. Several years later the shingles were replaced by lead-coated copper with standing seams. The belfry roof is pyramidal of steep pitch, with an ornamental metal cross which is also cruciform in plan so that it forms a cross in north, south, east and west elevations. The west facade has an ornamental Celtic cross, the foot of which extends through the junction of the raking cornices. Both crosses date from the first construction. The bell, hung in 1898, has both a clapper for ringing and a striker for tolling. It is still tolled for funerals.

UNITED STATES DEPARTMENT OF THE INTERIOR
NATIONAL PARK SERVICE

**NATIONAL REGISTER OF HISTORIC PLACES
INVENTORY -- NOMINATION FORM**

FOR NPS USE ONLY

RECEIVED

JUL 30 1976

DATE ENTERED

CONTINUATION SHEET Description ITEM NUMBER 7 PAGE 2

Originally the church had an Akron plan with sloping wooden floor. In the remodeling, the plan was changed to one with a center aisle on axis and a flat floor of stone and a raised chancel replaced the old.

3. Numbers 204 and 206 S. Main Street should be considered as a single building as the two are integrated architecturally. Intermediate piers which supported the series of high stone lintels have given place to beams introduced to span the openings beneath the lintels which are still in place as are the pilasters with which the three walls are faced. A parapet wall with projecting base course and coping course, all of rough-faced ashlar, surmount the dressed lintels. The parapet is divided by verticals in line with the pilasters.

4. Number 220 S. Main Street is a one-story stone building of simple construction and details. Large stone lintels span the three openings of the facade. The bearing walls and two intermediate piers are faced with pilasters which have a cyma reversa in the capitals; the pilasters are set on pedestals. There is a stone parapet divided by projections in line with the pilasters, as in 204 and 206 Main. All the stonework has a coating of stucco.

5. Number 224 S. Main Street is a two-story stone building. At street level are the usual three openings bridged by large stone lintels but this is the only extant example in Albany where the pilasters are repeated in the second story. Those of the first story have a pedestal below the pilaster base, and the capitals of both contain an ovolo moulding. The original panels below the windows and in the reveals of the door and window jambs and heads have been retained. The second-story windows have segmental arches of a keystone and two wide voussoirs; imposts are long, dressed verticals.

6. Number 226 S. Main Street is another two-story stone building of the same vintage as 224. There are three openings in the first floor facade with stone lintels carried on the walls and two piers all of which are faced with integral pilasters having incised splayed joints and cavetto capitals. There is a moulded stone course above the lintels. The second story has quoins but the returns are visible only on the south side where there is an exterior cast-iron stairway. The roughness of the returns contrast with the finely dressed front faces.

The three windows of the second floor have sills of dressed stone. Cornices above the windows are of surprising delicacy; they have rudimentary consoles at each end. The nine-light sashes were substituted for the original ones with larger panes about 1930. An imposing sheet metal cornice was replaced by a flat parapet of ugly yellow brick in the 1960s. At the same time, the lower part of the side openings filled with yellow brick bearing no relation to the architecture of the building. The panelling in all the heads and the door jambs is intact.

7. Numbers 228 and 232 S. Main Street are believed to have been one construction. The panelling beneath the glass of the doors and windows of the 228 is in the style of the time. The latch on the righthand door of 228 is an elegant example of building hardware of the period. Little is left of the old facade of 232 other than a strip of embossed sheet metal which is carried continuously above doors and windows across the entire fronts of both 228 and 232.

UNITED STATES DEPARTMENT OF THE INTERIOR
NATIONAL PARK SERVICE

**NATIONAL REGISTER OF HISTORIC PLACES
INVENTORY -- NOMINATION FORM**

FOR NPS USE ONLY

RECEIVED

DATE ENTERED

JUL 30 1976

CONTINUATION SHEET Description ITEM NUMBER 7 PAGE 3

8. While the two parts of the Lynch building are tied together by a continuous stone cornice across the front and identical torus capitals in the pilasters, the facade was designed to give individuality to the two halves. The west half has stone lintels spanning the three openings in the first story and stone lintels in the three windows above. The east side has elliptical arches over its three first-story openings and segmental arches over the second-story windows. Those above and below have in common keystones of normal proportions which extend above the extrados and below the intrados with a single wide voussoir on either side. There are quoins on the two facade corners, finely dressed in front but with the sides dressed at the corners but becoming rougher as they recede in similar manner to those in 226 S. Main. The corner visible from main street has been given the same treatment as that in the party wall at the east corner. The reveals of the openings are panelled.

9. Number 304 S. Main Street is a one-story building of red brick the color of Abilene common. The facade is an arcade of five equal openings with round arches. The cornice is made of bricks laid in a decorative three-dimensional pattern containing a course laid as dentils and, lower, two courses in a kind of billet mould. The plain jambs have a quarter round at the leading edge and the panels below the windows are without moulding.

10. Number 316 S. Main Street is a one-story stone building with three facade openings bridged by large stone lintels. The pilaster capitals have a cavetto above a quarter round. A decorated Victorian door pull and escutcheon are not as elaborate as the latch-set at 228 S. Main. The panelling in the reveals of the openings and beneath the windows is the most developed and quite the handsomest of all the commercial buildings of Albany. The doors also are noteworthy.

11. Number 322 S. Main Street is a free-standing one-story wooden store building. Typically, it has the rectangular false front hiding the gable. The false front is topped by a simple wood cornice. The most notable design features of this structure are the refined cornices above the front openings and the panelling and mouldings of the double doors. The upper part of the doors contain glass; above the pane of each door there is a cornice and below it there is a moulded base incorporating dentils. A single decorated doorknob remains.

12. The old jail is a simple two-story rectangular structure with a hipped roof with wooden shingles. The massive stones of its rough-faced ashlar and a fenestration which emphasizes the solidity of the walls in contrast to the not very large windows speak security.

13. Number 422 S. Walnut Street is a small rectangular stone cottage with hipped roof and fireplace and chimney at the south end. The windows have four-light sashes. Additions are a room across the front (probably a porch which has been enclosed) and a wooden lean-to across the rear.

14. Number 301 S. Third Street is a one-story wood frame residence with elegant and elaborate Victorian jigsaw scroll ornamentation above porch posts and supporting the porch roof, and in the three gables. There are delicate jigsaw pendants beneath the cornices over the principal windows which are tall with two-light sashes and sills near the floor line.

15. Number 319 S. Walnut is a wooden dwelling of a story and a half with two gables in the facade. There is evidence that the north wing, which is of only one story, was a

UNITED STATES DEPARTMENT OF THE INTERIOR
NATIONAL PARK SERVICE

**NATIONAL REGISTER OF HISTORIC PLACES
INVENTORY -- NOMINATION FORM**

FOR NPS USE ONLY

RECEIVED

DATE ENTERED

JUL 30 1976

CONTINUATION SHEET Description ITEM NUMBER 7 PAGE 4

later addition. Its windows are tall, with sills close to the floor level, and have two-light sashes, while those in the story-and-a-half part are not so high and have four-light sashes. The corners of the north gable overhang a large bay and there are wooden pendants suspended from the overhang soffits. Turned posts support the roof of the porch which extends across the older part. There is an interesting Victorian screen door at the entrance.

16. The one-story dwelling on S. Walnut and the abandoned railway right-of-way is a rectangular stone structure with hipped roof and a chimney at each side. An unusual feature in a modest dwelling in this locality is the use of quoins at the corners. All the stone has been coated with stucco.

UNITED STATES DEPARTMENT OF THE INTERIOR
NATIONAL PARK SERVICE

**NATIONAL REGISTER OF HISTORIC PLACES
INVENTORY -- NOMINATION FORM**

FOR NPS USE ONLY

RECEIVED

DATE ENTERED

JUL 30 1976

CONTINUATION SHEET Description ITEM NUMBER 7 PAGE 5

LIST OF STRUCTURES IN SHACKELFORD COUNTY COURTHOUSE HISTORIC DISTRICT

- ✓ 1. Shackelford County Courthouse, Courthouse Square. (No.1)
- ✓ 2. The First Shackelford County Jail, southside of 2nd Street, at the railroad right-of-way. (No.12)
3. First Christian Church---Corner of Walnut and 2nd Street, East side of square.
4. Claude Walraven Residence, Walnut Street.
5. Joe Bob Pate Residence, known as the old Caperton House, Walnut Street.
- ✓ 6. Wayne Chapman Residence, old Shield's Hotel, Walnut Street, 1877 built south section as a hotel by George Shields, added on for a residence about 1900. (No.15)
7. Dr. Luther Key Office, on Third Street on corner of Walnut and 3rd Street.
- ✓ 8. T. H. Barre House, west side of Walnut Street near Fourth Street. (No. 13)
- ✓ 9. Duffy-hill House, SE corner of Square, faces 3rd Street, built in 1883 by A. W. Duffy who was Albany's most successful early contractor and builder. Purchased in 1886 by L. H. Hill, Albany Businessman, who made extensive additions to the house where he died in 1932. Restored by the L. A. Sanders Estate in 1969 as a residence for Mr. and Mrs. Ed Compton. (No. 14)
10. Roy Matthews House, 3rd Street, Site of Albany's first hotel, The Barre Hotel, 1875. Destroyed by fire.
11. Robert E. Nail House, SW corner of Square, 3rd Street and Main Street, Home of Albany playwright and creator of the Fort Griffin Fandangle until his death in 1968.
12. Old service station, SW corner of Main Street and 3rd Street, facing Main, now a gift shop, the area in 1880s was a skating rink.
- ✓ 13. Pioneer Store, built in 1878 on West side of Main Street, restored in 1972 and operated by the Albany Study Club as a thrift store and Cluh House. Although it was built as a warehouse for larger stores, the Sanger Brothers of Dallas bought it in 1887 and operated businesses there by leasing until 1906. Since 1887 it has been used as a store, principally a grocery store until 1930s. Later an Antique Store, the building was in the Wm. Louis Hill Family until the Albany Study Club purchased it. (No. 11)

UNITED STATES DEPARTMENT OF THE INTERIOR
NATIONAL PARK SERVICE

**NATIONAL REGISTER OF HISTORIC PLACES
INVENTORY -- NOMINATION FORM**

FOR NPS USE ONLY

RECEIVED

DATE ENTERED

JUL 30 1976

CONTINUATION SHEET Description ITEM NUMBER 7 PAGE 6

- ✓ 14. Blach Building, built 1884 by Julius and Simon Blach of Cincinnati, Ohio and Max Blach of Albany, Texas, rancher and businessman. It was the Casino Saloon at first and later a dry goods store. It is now the office and workshop of Joe Blanton Organ business, and has been in the Family of L. H. Hill since 1925. West side of Square, South Main Street. (No. 10)
15. Masonic Hall and H. R. Stasney offices, South Main Street. Built in 1884 by Charles Hartfield, restaurant owner, finished in 1885 by Sam Webb, N. H. Burns, and Max Blach after Hartfield's death. Long used for a Dry Goods establishment, The Star Store, the front was radically altered by brick in the early 1950s by the Albany Masonic Lodge.
16. Clear Fork Motor Co., South Main Street.
17. E. E. Whitney Building, South Main Street, built as a one-story rock building in early 1880s burned about 1893, rebuilt as one-story rock in 1894, and remodeled as two-story building by local merchant, Whitney, in 1926.
- ✓ 18. Albany Auto Supply, South Main Street, built 1894, first used as George's Drug Store and the Albany Post Office after rebuilding because of fire: Albany's first brick business. (No. 9)
19. Thomas Furniture Co., South Main Street, Site of Frank Conrad Store, 1881, a Fort Griffin merchant who moved his General Merchandise Store to Albany because of the railroad's arrival. Store burned in 1893 and was rebuilt as a stone building. Front modified with brick by Joe Castleberry in 1950s.
- ✓ 20. Sedwick Buildings, facing South Main Street at 2nd Street corner. Built in 1884 for a Saloon and Feed Store by J. L. Buford. Contractors were Bialluch and Wechesser. Used later as a drug store and grocery store. Purchased by John F. Sedwick and today used as a furniture storeroom and Shoe Repair Shop. A Frame building. (No. 7)
21. West Texas Utilities Building, South Main Street, North of Square.
- ✓ 22. Albany City Hall, South Main Street, North of Square built in 1883 for the First National Bank. Now the city offices. (No. 6)
- ✓ 23. Bill Hill Building, South Main Street, North of Square, built in 1884, by H. C. Jacobs, father of Albany, and J. L. Fisher, early County Judge, as their land agents office and from 1902-13 was the Albany National Bank Building. It is in excellent condition and is used as a dance studio upstairs and offices downstairs. Bill Hill is the grandson of L. H. Hill. (No. 5)

UNITED STATES DEPARTMENT OF THE INTERIOR
NATIONAL PARK SERVICE

**NATIONAL REGISTER OF HISTORIC PLACES
INVENTORY -- NOMINATION FORM**

FOR NPS USE ONLY

RECEIVED

DATE ENTERED

JUL 30 1976

CONTINUATION SHEET Description ITEM NUMBER 7 PAGE 7

- ✓ 24. The City Grocery, South Main Street, North of Square, built in 1884 by workman and stone cutter, Patrick McDonald who also constructed the Jacobs-Fisher-Hill Building. Built for a drugstore, it has been a grocery store for 30 years. (No. 4)
- 25. Carter King Buildings, South Main Street, North of Square, built before 1900, a series of 6 businesses, a Bit Business, a beauty shop, and abstract office, two barber shops, and a magazine publishing office. With some repairs, this building could be added later. The building fits in well with the district's appearance and architecture, although at present the run-down condition does not warrant this. Probably built after 1885 and before 1900.
- ✓ 26. Sanders Drug Store Building, South Main Street, North of Square, built by D. A. Nance, early store keepers and rancher at Fort Griffin and Eli Meyer, Butcher and Rancher in 1900. Purchased in 1907 by John F. Sedwick for a Dry Goods Specialty Shop, a women's dress shop, and the north one is the Weaver-Oates Drug Store, formerly Sanders Drug Store. L. A. Sanders purchased the '20s drug fixtures, still used today. (No. 3)
- 27. First National Bank Building, Corner of South Main Street and 1st Street, West side, now in the process of restoration efforts which include building to the south. Built 1913. Restoration and rebuilding efforts will have '20s look.
- ✓ 28. Lynch Building, corner of 2nd Street and South Main Street, built by W. H. Miller and Masonic Lodge east section in 1878 and west section for Knights of Pythias and Live and Let Live Drug Store by J. C. Lynch in 1881. Has housed nearly every phase of Albany business life from stores to offices, including lodges, an artist studio, Jaycee Hall, and Newspaper offices. Now is a dentist office, a savings and loan office, and independent oilman's office, and an investor's office. Recently restored, in 1974 & 1975. (No. 8)
- 29. Small garage houses Fandangle Train, 2nd Street.
- 30. Lowe Electric Shop, an old garage building is electric shop for oilfield work, 2nd Street.
- 31. Bill Goins TV repair shop, 2nd Street.
- 32. American Legion Hall, corner of 2nd Street and Walnut Street.
- ✓ 33. George Wilhelm House, built in 1879 as a residence, Walnut Street. (No. 16)
- ✓ 34. Matthews Memorial Presbyterian Church, Corner of 2nd Street and South Jacobs Street, built 1898, the pride of Albany's religious community for its architectural beauty inside and out. (No. 2)

UNITED STATES DEPARTMENT OF THE INTERIOR
NATIONAL PARK SERVICE

**NATIONAL REGISTER OF HISTORIC PLACES
INVENTORY -- NOMINATION FORM**

FOR NPS USE ONLY

RECEIVED

DATE ENTERED

JUL 30 1976

CONTINUATION SHEET Description ITEM NUMBER 7 PAGE 5

LIST OF STRUCTURES IN SHACKELFORD COUNTY COURTHOUSE HISTORIC DISTRICT

1. Shackelford County Courthouse and Jail, Courthouse Square. (No. 1)
2. The First Shackelford County Jail, southside of 2nd Street, at the railroad right-of-way. (No. 12) ³⁶
3. First Christian Church--Corner of Walnut and 2nd Street, east side of Square.
4. Claude Walraven Residence, Walnut Street.
5. Joe Bob Pate Residence, known as the old Caperton House, Walnut Street.
6. Wayne Chapman Residence, old Shield's Hotel, Walnut Street, 1877 built south section as a hotel by George Shields, added on for a residence about 1900. (No. 15)
7. Dr. Luther Key Office, on Third Street on corner of Walnut and 3rd Street.
8. T. H. Barre House, west side of Walnut Street near Fourth Street. (No. 13)
9. Duffy-hill House, SE corner of Square, faces 3rd Street, built in 1883 by A. W. Duffy who was Albany's most successful early contractor and builder. Purchased in 1886 by L. H. Hill, Albany businessman, who made extensive additions to the house where he died in 1932. Restored by the L.A. Sanders Estate in 1969 as a residence for Mr. and Mrs. Ed Compton. (No. 14)
10. Roy Matthews House, 3rd Street, Site of Albany's first hotel, The Barre Hotel, 1875. Destroyed by fire.
11. Old service station, SW corner of Main Street and 3rd Street, facing Main now a gift shop, the area in 1880's was a skating rink.
12. Pioneer Store, built in 1878 on West side of Main Street, restored in 1972 and operated by the Albany Study Club as a thrift store and Club House. Although it was built as a warehouse for larger stores, the Sanger Brothers of Dallas bought it in 1887 and operated businesses there by leasing until 1906. Since 1887 it has been used as a store, principally a grocery store until 1930's. Later an antique store, the building was in the Wm. Louis Hill family until the Albany Study Club purchased it. (No. 11)

UNITED STATES DEPARTMENT OF THE INTERIOR
NATIONAL PARK SERVICE

**NATIONAL REGISTER OF HISTORIC PLACES
INVENTORY -- NOMINATION FORM**

FOR NPS USE ONLY

RECEIVED

DATE ENTERED

JUL 30 1976

CONTINUATION SHEET Description ITEM NUMBER 7 PAGE 6

13. Blach Building, built in 1884 by Julius and Simon Blach of Cincinnati, Ohio and Max Blach of Albany, Texas, rancher and businessman. It was the Casino Saloon at first and later a dry goods store. It is now the office and workshop of Joe Blanton Organ business, and has been in the family of L.H. Hill since 1925. West side of Square, South Main Street. (No. 10)
14. Masonic Hall and H.R. Stasney offices, South Main Street. Built in 1884 by Charles Hartfield, restaurant owner, finished in 1885 by Sam Webb, N.H. Burns, and Max Blach after Harfield's death. Long used for a Dry Goods establishment, The Star Store, the front was radically altered by brick in the early 1950's by the Albany Masonic Lodge.
15. Clear Fork Motor Company, South Main Street.
16. E.E. Whitney Building, South Main Street, built as a one-story rock building in early 1880's burned about 1893, rebuilt as one-story rock in 1894, and remodeled as two-story building by local merchant, Whitney, in 1926.
17. Albany Auto Supply, South Main Street, built 1894, first used as George's Drug Store and the Albany Post Office after rebuilding because of fire: Albany's first brick business. (No. 9)
18. Thomas Furniture Company, South Main Street, Site of Frank Conrad Store, 1881, a Fort Griffin merchant who moved his General Merchandise Store to Albany because of the railroad's arrival. Store burned in 1893 and was rebuilt as a stone building. Front modified with brick by Joe Castleberry in 1950's.
19. Sedwick Buildings, facing South Main Street at 2nd Street corner. Built in 1884 for a Saloon and Feed Store by J.L. Buford. Contractors were Bialluch and Wechesser. Used later as a drug store and grocery store. Purchased by John F. Sedwick and today used as a furniture storeroom and Shoe Repair Shop. A frame building. (No. 7)
20. West Texas Utilities Building, South Main Street, North of Square.
21. Albany City Hall, South Main Street, north of Square built in 1883 for the First National Bank. Now the city offices. (No. 6)
22. Bill Hill Building, South Main Street, North of Square, built in 1884, by H.C. Jacobs, father of Albany, and J.L. Fisher, early County Judge, as their land agents office and from 1902-13 was the Albany National Bank Building. It is in excellent condition and is used as a dance studio upstairs and offices downstairs. Bill Hill is the grandson of L.H. Hill. (No. 5)

UNITED STATES DEPARTMENT OF THE INTERIOR
NATIONAL PARK SERVICE

**NATIONAL REGISTER OF HISTORIC PLACES
INVENTORY -- NOMINATION FORM**

FOR NPS USE ONLY

RECEIVED

DATE ENTERED

JUL 30 1976

CONTINUATION SHEET Description ITEM NUMBER 7 PAGE 7

23. The City Grocery, South Main Street, north of Square, built in 1884 by workman and stone cutter, Patrick McDonald who also constructed the Jacobs-Fisher-Hill Building. Built for a drugstore, it has been a grocery store for 30 years. (No. 4)
24. Carter King Buildings, South Main Street, north of Square, built before 1900, a series of 6 businesses, a Bit business, a beauty shop, and abstract office, two barber shops, and a magazine publishing office. With some repairs, this building could be added later. The building fits in well with the district's appearance and architecture, although at present the run-down condition does not warrant this. Probably built after 1885 and before 1900.
25. Sanders Drug Store Building, South Main Street, north of Square, built by D.A. Nance, early store keepers and rancher at Fort Griffin and Eli Meyer, butcher and rancher in 1900. Purchased in 1907 by John F. Sedwick for a Dry Goods store, formerly Sanders Drug Store. L.A. Sanders purchased the '20s drug fixtures, still used today. (No. 3)
26. First National Bank Building, corner of South Main Street and 1st Street, west side, now in the process of restoration efforts which include building to the south. Built in 1913. Restoration and rebuilding efforts will have '20s look.
27. Lynch Building, corner of 2nd Street and South Main Street, built by W.H. Miller and Masonic Lodge east section in 1878 and west section for Knights of Pythias and Live and Let Live Drug Store by J.C. Lynch in 1881. Has housed nearly every phase of Albany business life from stores to offices, including lodges, an artist studio, Jaycee Hall, and Newspaper officers. Now is a dentist office, a savings and loan office, and independent oilman's office, and an investor's office. Recently restored, in 1974 and 1975. (No. 8)
28. Small garage houses Fandangle Train, 2nd Street.
29. Lowe Electric Shop, an old garage building is electric shop for oilfield work, 2nd Street.
30. Bill Goins TV repair shop, 2nd Street.
31. American Legion Hall, corner of 2nd Street and Walnut Street.
32. George Wilhelm House, built in 1879 as a residence, Walnut Street. (No. 16)

UNITED STATES DEPARTMENT OF THE INTERIOR
NATIONAL PARK SERVICE

**NATIONAL REGISTER OF HISTORIC PLACES
INVENTORY -- NOMINATION FORM**

FOR NPS USE ONLY

RECEIVED

DATE ENTERED

JUL 30 1976

CONTINUATION SHEET Description ITEM NUMBER 7 PAGE 8

33. Matthews Memorial Presbyterian Church, corner of 2nd Street and South Jacobs Street, built 1898, the pride of Albany's religious community for its architectural beauty inside and out. (No. 2)
34. Albany Theater, Mission Revival Style (1920's); vacant, Main Street.

8 SIGNIFICANCE

PERIOD	AREAS OF SIGNIFICANCE -- CHECK AND JUSTIFY BELOW			
<input type="checkbox"/> PREHISTORIC	<input type="checkbox"/> ARCHEOLOGY-PREHISTORIC	<input type="checkbox"/> COMMUNITY PLANNING	<input type="checkbox"/> LANDSCAPE ARCHITECTURE	<input type="checkbox"/> RELIGION
<input type="checkbox"/> 1400-1499	<input type="checkbox"/> ARCHEOLOGY-HISTORIC	<input type="checkbox"/> CONSERVATION	<input type="checkbox"/> LAW	<input type="checkbox"/> SCIENCE
<input type="checkbox"/> 1500-1599	<input type="checkbox"/> AGRICULTURE	<input type="checkbox"/> ECONOMICS	<input type="checkbox"/> LITERATURE	<input type="checkbox"/> SCULPTURE
<input type="checkbox"/> 1600-1699	<input checked="" type="checkbox"/> ARCHITECTURE	<input type="checkbox"/> EDUCATION	<input type="checkbox"/> MILITARY	<input checked="" type="checkbox"/> SOCIAL/HUMANITARIAN
<input type="checkbox"/> 1700-1799	<input type="checkbox"/> ART	<input type="checkbox"/> ENGINEERING	<input type="checkbox"/> MUSIC	<input type="checkbox"/> THEATER
<input checked="" type="checkbox"/> 1800-1899	<input type="checkbox"/> COMMERCE	<input type="checkbox"/> EXPLORATION/SETTLEMENT	<input type="checkbox"/> PHILOSOPHY	<input type="checkbox"/> TRANSPORTATION
<input checked="" type="checkbox"/> 1900-	<input type="checkbox"/> COMMUNICATIONS	<input type="checkbox"/> INDUSTRY	<input checked="" type="checkbox"/> POLITICS/GOVERNMENT	<input type="checkbox"/> OTHER (SPECIFY)
		<input type="checkbox"/> INVENTION		

SPECIFIC DATES

BUILDER/ARCHITECT

STATEMENT OF SIGNIFICANCE

The first white settlers came to Shackelford County when it was created in 1858 from Bosque Co. and named for Dr. John J. Shackelford, hero of Goliad. With the advent of the Civil War these people were forced to band together in family forts as protection from the Indians. After the war the federal government established in 1867 a military post called Fort Griffin in the northern sector of the county on the Clear Fork of the Brazos River, signaling the first rush of pioneers. Shackelford County was attached to Palo Pinto Co. in 1860, later Jack Co., and was organized in 1874.

Albany was located south of Ft. Griffin in the center of the county and was chosen county seat over Griffin in a hotly contested race. William Kirkland, County Surveyor, and H. C. Jacobs, County Sheriff, platted the town of Albany on 160 acres that Jacobs was homesteading. As a result Jacobs donated land to the county for the courthouse, streets, and alleys, and some residence and business acreage. W. R. Cruger soon replaced Kirkland and sold lots on behalf of the county, selecting the name Albany for his old home, Albany, Georgia.

The original courthouse was built in 1875 of picket construction, and it sat in the middle of a square 420' x 420'. It was removed from the site in 1883 by Charles Hartfield, a restaurant owner, to use as rooms for workers building the rock courthouse (1883-84) which stands today. Courthouse offices were temporarily located in the upper floor of a two-story stone building known as the Ballow-Keener Building on the NE corner of the square while the new courthouse was being constructed. The magnificent Victorian Courthouse was designed by Dallas Architect J. E. Flanders and was built by a crew of workmen headed by Edgar Rye and later, J. T. Camp. The exterior of the building is in perfect condition.

Around the square, lots of twenty five feet wide were laid out, sixteen on each side, and business houses steadily took their place. Blocks were in a grid pattern with the Courthouse Square in the center. The first structures, built in the years 1875-1880 were predominately of frame construction. Of these two remain on the courthouse square. The old Shields Hotel, built in 1877, on the east side of the square was incorporated into a residence about 1900 and stands today. (no. 15) On the west side a small frame building, built in 1878 by merchant T. E. Jackson as a warehouse for his larger store next door, stands yet and has been recently restored. From 1880-87 Sanger Bros. of Dallas owned and operated the building for merchandising. (no. 11) From this period, four rock structures remain. (nos. 8, 12, 13, 16) The east half of the Lynch Building was built by W. H. Miller for a general merchandise store, and the upper floor was constructed by the Masonic Lodge in 1878. (no. 8, recently restored.) In 1877 the county began to erect its first county jail, a two-story building of stone which bear the carved initials of each stone mason. Used until 1929, the building housed memorabilia and papers of the late Robert E. Nail (1940-1968), local playwright and author of the Fort Griffin Fandangle, Albany historical pageant. (no. 12) The other structures of this era were built as residences and still are used as such. George Wilhelm erected his residence in 1879 (no. 16) and was an early businessman in Albany, operating a store and a saloon on the east side of square. This

9 MAJOR BIBLIOGRAPHICAL REFERENCES

Deed Records of the properties, Shackelford County Courthouse.
 Files of the Albany and Fort Griffin newspapers.
 Robert E. Nail Collection, ASCS Office, Albany, Texas.
 1885 Map of Courthouse, Bill Hill, Albany, Texas.
 Square

10 GEOGRAPHICAL DATA

ACREAGE OF NOMINATED PROPERTY 17 Acres
 UTM REFERENCES

A	1,4	4,7,2	4,6,0	3,6	2,0	6,0,0	B	1,4	4,7,2	4,6,0	3,6	2,0	1,6,0
	ZONE	EASTING		NORTHING				ZONE	EASTING		NORTHING		
C	1,4	4,7,2	0,2,0	3,6	2,0	1,6,0	D	1,4	4,7,2	0,2,0	3,6	2,0	6,0,0

VERBAL BOUNDARY DESCRIPTION

See Continuation Sheet, item no. 10, and enclosed district map

LIST ALL STATES AND COUNTIES FOR PROPERTIES OVERLAPPING STATE OR COUNTY BOUNDARIES

STATE	CODE	COUNTY	CODE
STATE	CODE	COUNTY	CODE

11 FORM PREPARED BY

NAME / TITLE Joe Williams, Project Director
Mrs. Clifton Caldwell, Albany, Texas and Daniel Hardy, Residency Intern
 ORGANIZATION Texas Historical Commission DATE 28 April 1976
 STREET & NUMBER P. O. Box 12276, Capitol Station TELEPHONE 512/475-3094
 CITY OR TOWN Austin STATE Texas 78711

12 STATE HISTORIC PRESERVATION OFFICER CERTIFICATION

THE EVALUATED SIGNIFICANCE OF THIS PROPERTY WITHIN THE STATE IS:

NATIONAL

STATE

LOCAL *per phone call 6/21/76*

As the designated State Historic Preservation Officer for the National Historic Preservation Act of 1966 (Public Law 89-665), I hereby nominate this property for inclusion in the National Register and certify that it has been evaluated according to the criteria and procedures set forth by the National Park Service.

STATE HISTORIC PRESERVATION OFFICER SIGNATURE

Scott Palmer

TITLE State Historic Preservation Officer

DATE April 26, 1976 *per phone call 6/21/76*

FOR NPS USE ONLY

I HEREBY CERTIFY THAT THIS PROPERTY IS INCLUDED IN THE NATIONAL REGISTER

Acting

DIRECTOR, OFFICE OF ARCHEOLOGY AND HISTORIC PRESERVATION

DATE 7/30/76

ATTEST:

Chack [Signature]

DATE 7-30-76

Acting KEEPER OF THE NATIONAL REGISTER

UNITED STATES DEPARTMENT OF THE INTERIOR
NATIONAL PARK SERVICE

FOR NPS USE ONLY	
RECEIVED	
DATE ENTERED	JUL 30 1976

**NATIONAL REGISTER OF HISTORIC PLACES
INVENTORY -- NOMINATION FORM**

CONTINUATION SHEET Significance ITEM NUMBER 8 PAGE 2

rock home was used as Albany's first public school, 1883. The T. H. Barre House (no. 13) was built by 1879 and used as a private school house in 1880. Barre ran the first hotel in Albany in 1875 and gave the land for the present city cemetery.

Fort Griffin's businesses remained there until the Texas Central Railroad arrived at Albany in 1881. The military abandoned the Fort that year, and the town folded with many businessmen moving to the county seat. Remaining for 19 years as terminus of the Texas Central, Albany experienced accelerated building during this time. By 1881 Shackelford County Rancher, J. C. Lynch had constructed the west section of the two-story, rock Lynch Building for the "Live and Let Live Drug Store". He bought the entire building at that time. In 1883 A. W. Duffy who built two of Albany's first churches and its first school along with many residences, erected on the SE corner of the square a home for himself. Recently restored (no. 14), the lovely Victorian home for 46 years was the residence of L. H. Hill, real estate wizard of West Texas. The First National Bank incorporated in 1883 and built a two-story rock structure (no. 6), long the bank, but later city hall.

In 1884 several more rock business houses were erected. Henry Jacobs and J. L. Fisher, County Judge, as partners in selling real estate, built a handsome two-story building, (no. 5) totally unspoiled today. From 1902-13 the Albany National Bank was located here. Max Blach, local rancher and businessman, erected a beautiful rock building, used as a saloon in 1884.(no. 10) An Irish stonecutter, Patrick McDonald, built the Jacobs-Fisher Building, cut and laid the courthouse steps, winning the praise of Flanders, and in 1884 built his own one-story rock structure.(no. 4) Also, built in '84 by Bialluch and Weckesser, is a three section frame structure which housed the Biggs Saloon and the Jacobs and McComb Feed Store on the corner of the NW area facing Main Street (no.7)

After devastating fires, the 1890's brought Albany's first brick business house to life as a drug store. It was built about 1894 (no.9) into the burned rock walls of the thriving N. H. Burns Hardware Store of the '80s. Burns and Max Blach had organized Albany's first Water Company in 1883. The Matthews Memorial Presbyterian Church was built in 1882. With its lovely stone floors, stained windows, and exceptional pipe organ, religious shelter through current times has been given to persons from across the United States visiting Albany and members of the J. B. Matthews family for whom the church was named.(no. 2) The Sanders Drug Store Building originally was used as a dry goods and grocery store in 1900 and was built by D. A. Nance and Eli Meyer, pioneers and early ranchers. Inside the fixtures and interior reflect a mint 1920's drug establishment (no.3) owned by the John F. Sedwick family who purchased the building in 1907.

Few unsightly intrusions are evidenced in the district. The undescribed business buildings are either equally as old with slightly modified store fronts or constitute an unaltered line of 1920's structures. Individual efforts have restored portions of the Shackelford County Courthouse Historic District. A co-operative movement by business owners has initiated a trend toward revitalization of the area, following a restoration study and proposal by the Texas Historical Commission. The charm of the Northwest Texas Frontier is still much in evidence.

Every summer the citizenry of Albany, Texas give an historical presentation commemorating the story of the land and its people, The Fort Griffin Fandangle. Albany residents took their show to the LBJ Ranch when President Johnson entertained the OAS Ambassadors, and this year, 1976, they will present a benefit show at the LBJ Ranch

UNITED STATES DEPARTMENT OF THE INTERIOR
NATIONAL PARK SERVICE

**NATIONAL REGISTER OF HISTORIC PLACES
INVENTORY -- NOMINATION FORM**

FOR NPS USE ONLY	
RECEIVED	
DATE ENTERED	JUL 30 1976

CONTINUATION SHEET Significance ITEM NUMBER 8 PAGE 3

for the grove of trees commemorating President Lyndon Johnson in Washington, D.C. The small population of 1,978 in Albany, Texas remembers its heritage.

UNITED STATES DEPARTMENT OF THE INTERIOR
NATIONAL PARK SERVICE

**NATIONAL REGISTER OF HISTORIC PLACES
INVENTORY -- NOMINATION FORM**

FOR NPS USE ONLY

RECEIVED

DATE ENTERED

JUL 30 1976

CONTINUATION SHEET Significance ITEM NUMBER 8 PAGE 4

The Shackelford County Courthouse Historic District represents the late 19th and early 20th century commercial and residential development of a frontier west Texas community. Evident in the district are several buildings which comprise a solid grouping of Victorian structures as a visual reminder of the town's historical significance.

UNITED STATES DEPARTMENT OF THE INTERIOR
NATIONAL PARK SERVICE

**NATIONAL REGISTER OF HISTORIC PLACES
INVENTORY -- NOMINATION FORM**

FOR NPS USE ONLY

RECEIVED

DATE ENTERED

JUL 30 1976

CONTINUATION SHEET

ITEM NUMBER 10 PAGE 1

Boundaries for Shackelford County Historic District:

The southern boundary of the Shackelford County Courthouse District begins at the midpoint of the intersection of South Walnut street and South 4th street and runs west for one-half block. At this point it turns 90° north and follows the alley for one full block to the middle of south 3rd street. Turning 90° west, the boundary follows south 3rd street for one block, crossing main street, to where the alley intersects the middle of s. 3rd street. At the alley the boundary turns 90° north and runs for one block along the alley to the middle of south 2nd street. It makes a 90° turn west and follows south 2nd street for one-half block. The boundary turns 90° north at the intersection of south 2nd street and south Jacobs street and continues for approximately ½ block. At this point it turns 90° eastward and runs for one-half block until it intersects the alley between south Jacobs and south Main streets. At a midpoint in the alley the boundary turns 90 degrees north and runs for one-half block to the middle of south first street. Here it makes a 90 degree turn east and continues for one-half block to the intersection of south 1st and south Main streets. The boundary makes a 90 degrees turn south and follows the middle of south main street for one-half block where it then turns 90 degrees east and follows the alley between south 1st and south 2nd streets for one-half block. At the intersection of the two alleys, the boundary turns 90 degrees north and continues for one-half block to the midpoint of south 1st street. Here it makes a 90 degrees turn east and runs for approximately ¼ block until it intersects the right-of-way to the west of the abandoned TC & MK Texas Railroad. Turning approx. 45 degrees to the southeast the boundary follows the right-of-way to the intersection of south Walnut street. Here it turns approx. 45 degrees south and continues for approximately ¾ block to the intersection of south Walnut street and south 2nd street. At this point the line turns 90 degrees east and continues for approx. ¾ block until it again intersects the railroad right-of-way. Here it turns 45 degrees southeast and follows the right-of-way to the intersection of south Pecan street. Turning approx. 45 degrees south the boundary follows the center of south Pecan to the middle of the block and turns 90 degrees west and to the alley. The line follows the alley westward until it intersects the north-south alley and then turns 90 degrees south following the alley for one-half block to the middle of south 3rd street.

UNITED STATES DEPARTMENT OF THE INTERIOR
NATIONAL PARK SERVICE

**NATIONAL REGISTER OF HISTORIC PLACES
INVENTORY -- NOMINATION FORM**

FOR NPS USE ONLY

RECEIVED

DATE ENTERED

JUL 30 1976

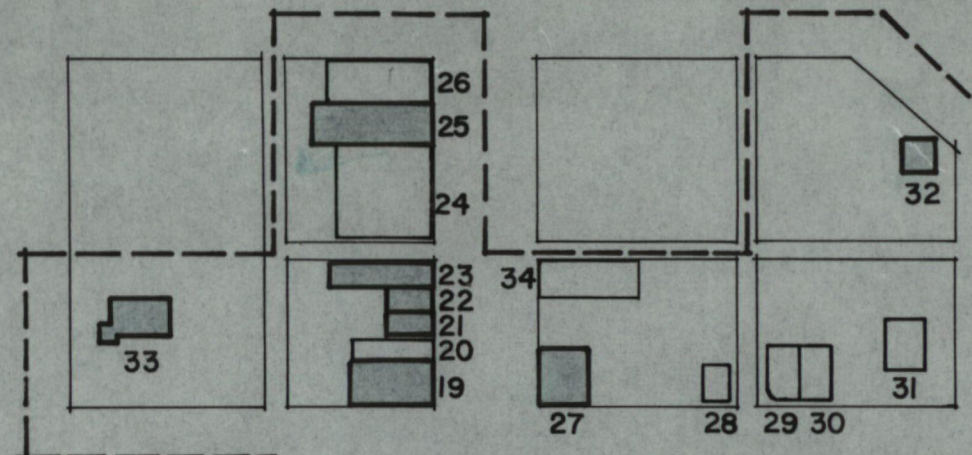
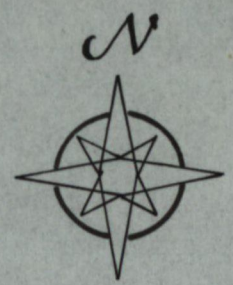
CONTINUATION SHEET

ITEM NUMBER 10 PAGE 2

Here the boundary turns 90 degrees west and runs for one-half block to the intersection of south 3rd and south Walnut streets. At this intersection it turns 90 degrees south and continues for one block to the intersection of south Walnut and south 4th streets or to the beginning point of the boundary.

SOUTH FIRST STREET

old TEXAS CENTRAL & MISSOURI KANSAS TEXAS RIGHT-OF-WAY



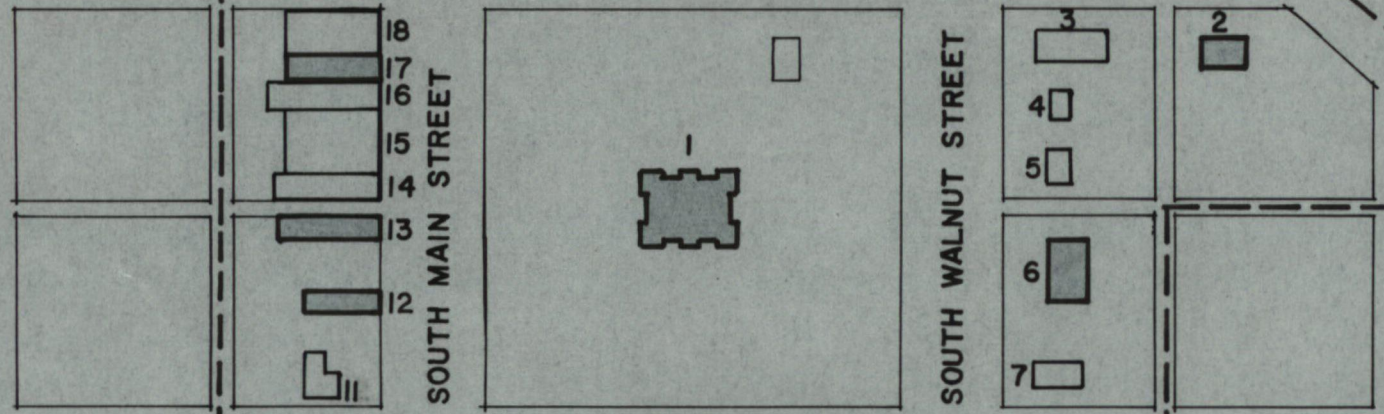
SOUTH SECOND STREET

SOUTH JACOBS STREET

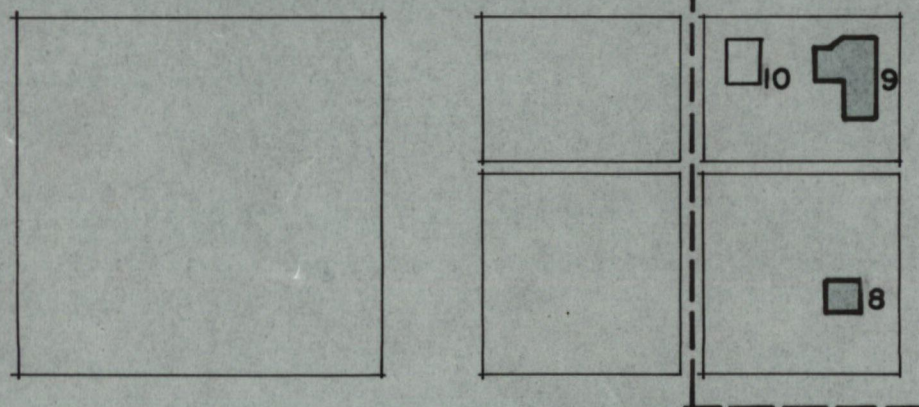
SOUTH MAIN STREET

SOUTH WALNUT STREET

SOUTH PECAN STREET



SOUTH THIRD STREET

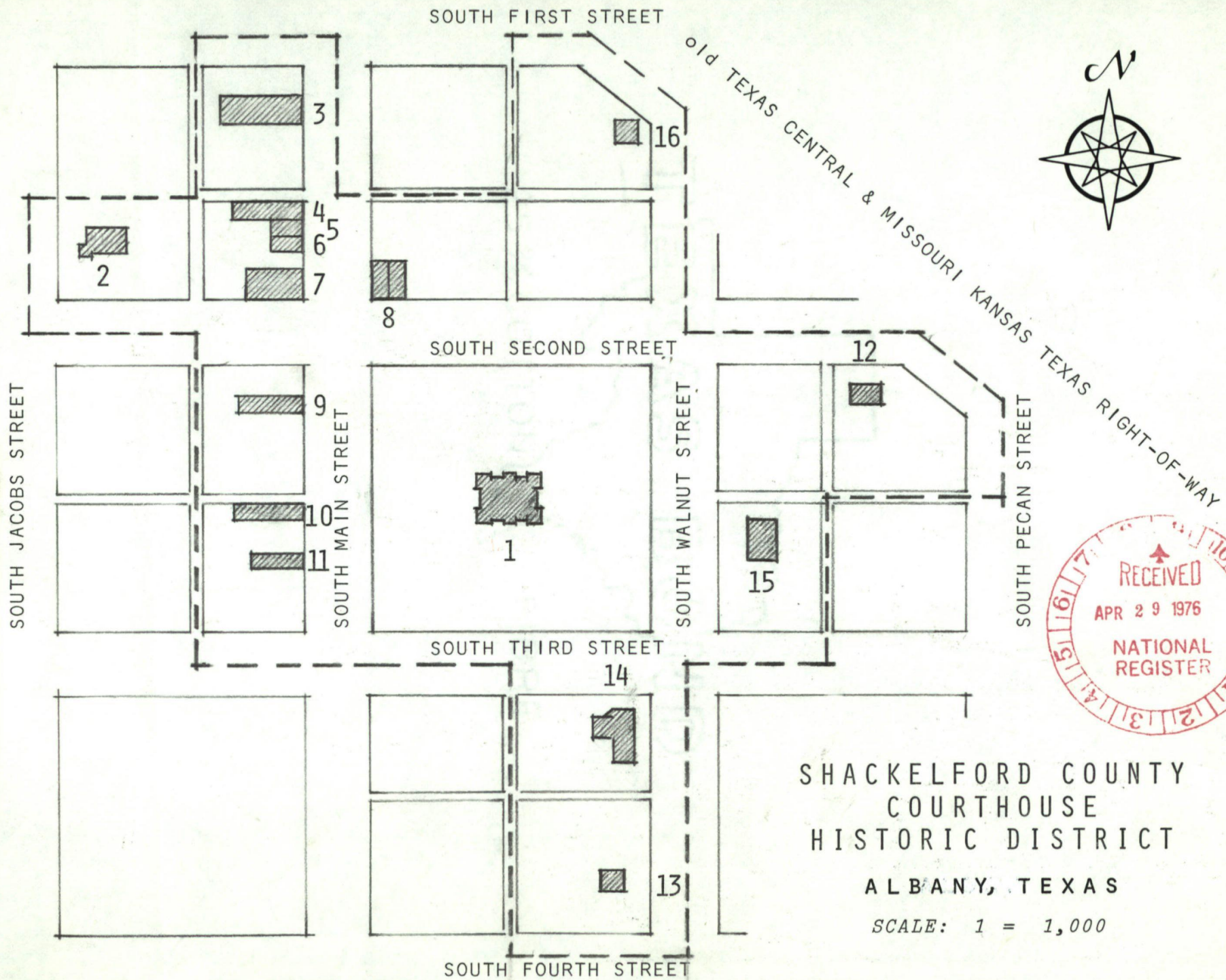


SOUTH FOURTH STREET

SHACKELFORD COUNTY
COURTHOUSE
HISTORIC DISTRICT

ALBANY, TEXAS

SCALE 1" = 200'



SHACKELFORD COUNTY
 COURTHOUSE
 HISTORIC DISTRICT

ALBANY, TEXAS

SCALE: 1 = 1,000



TEXAS HISTORICAL COMMISSION

P. O. BOX 12276 CAPITOL STATION AUSTIN, TEXAS 78711

TRUETT LATIMER
EXECUTIVE DIRECTOR

June 25, 1976

Ms. Sally Oldham
National Register of Historic Places
Department of the Interior
National Park Service
18th and C Streets, N.W.
Washington, D.C. 20240

Dear Ms. Oldham:

Enclosed is the additional information requested for the Shackelford County Courthouse Historic District submission, Shackelford County, Texas. The list of structures in the district (item # 7, pages 5-7) has been amended and the order changed slightly (now pages 5-8). An additional sketch map with the structures numbered corresponding to this new list accompanies the information.

Also, enclosed is a succinct statement to complete item 8 (significance).

Yours Truly,

Daniel Hardy

Daniel Hardy
Texas Historical Commission

DH/mw

Property Shackelford County Courthouse Historic District

76002065
Shackelford

State Texas

Working Number 4.29.76.3239

TECHNICAL

Photos 20
Maps 2

*#12 needs date.
level of significance*

CONTROL

pl
5.3.76

HISTORIAN

How about photos of intrusions - at least included in streetscape.

*Call
B Grosvenor
6/17/76
accept - 7/9/76*

The new sketch map shows that many of the intrusions can be seen in part in the existing photos, and their character discerned - they appear compatible with the surrounding buildings. In addition, the continuation photo indicates that many are 19th century and could be restored.

Local significance I should think.

ARCHITECTURAL HISTORIAN

Enclosed list notes 34 structures while the sketch map indicates 16. We need to have a map showing all 34. Are all the other intrusions? Form says there are "few unwelcome intrusions - how many, where?"

*Call
S Odham
6/14/76
Accept
7/8/76*

ARCHEOLOGIST

OTHER

HAER

Inventory _____
Review _____

REVIEW UNIT CHIEF

Great photos.

BRANCH CHIEF

*Accept
Cole
8/1/76*

KEEPER

*Accept
8.2.76*

National Register Write-up _____

Send-back _____

Entered JUL 30 1976

Federal Register Entry 9-7-76

Re-submit _____

INT:2106-74



Shackelford County Courthouse
Shackelford County Courthouse District
Albany, Texas
Shackelford County
Ted Powers
Texas Historical Commission
April, 1971
South Elevation
Photo #1

APR 29 1976

d.v.e. JUL 30 1976

PROPERTY OF THE NATIONAL REGISTER

(2)

TX 6



Shackelford County Courthouse
Shackelford County Courthouse District
Albany, Texas
Shackelford County
Ted Powers
Texas Historical Commission
April, 1971
NW Oblique
Photo #2

d.s.e. JUL 30 1976

APR 29 1976

PROPERTY OF THE NATIONAL REGISTER



Matthews Memorial Presbyterian Church
Shackelford County Courthouse District
Albany, Texas
Shackelford County
Ted Powers
Texas Historical Commission
April, 1971
W. Elevation
Photo #3

done JUL 30 1976

APR 29 1976

PROPERTY OF THE NATIONAL REGISTER



Matthews Memorial Presbyterian Church
Shackelford County Courthouse District
Albany, Texas
Shackelford County
Ted Powers
April, 1971
NW Oblique
Photo #4

d.o.e JUL 30 1976

APR 29 1976

PROPERTY OF THE NATIONAL REGISTER



Sanders Drug Store Building
204 and 206 South Main
Shackelford County Courthouse District
Weaver-Oats Drug Store
Albany, Texas
Shackelford County
Chip Kaufman
Texas Historical Commission
June, 1974
East Elevation
Photo #5

d.v.e

JUL 30 1976

APR 29 1976

PROPERTY OF THE NATIONAL REGISTER



Sanders Drug Store Building
204 and 206 South Main
Shackelford County Courthouse District
Weaver-Oats Drug Store
Albany, Texas
Shackelford County
Chip Kaufman
Texas Historical Commission
June, 1974
Interior, Looking West
Photo #6

d.c.e. JUL 30 1976

APR 29 1976

PROPERTY OF THE NATIONAL REGISTER



220, 224, and 226 South Main Street
Shackelford County Courthouse District
Albany, Texas
Shackelford County
Chip Kaufman
Texas Historical Commission
June, 1974
East Elevation
Photo #7

d.o.e JUL 30 1976 APR 29 1976

PROPERTY OF THE NATIONAL REGISTER



FARM
ROAD
1084

↑

283

↔

TAN

PIED PIPER
MILLS INC.

WES

228-232 South Main Street
Shackelford County Courthouse District
Albany, Texas
Shackelford County
Chip Kaufman
Texas Historical Commission
June, 1974
East Elevation
Photo #8

APR 29 1976

d.o.c. JUL 30 1976

PROPERTY OF THE NATIONAL REGISTER



Lynch Building
Shackelford County Courthouse District
Albany, Texas
Shackelford County
Chip Kaufman
Texas Historical Commission
June, 1974
North Elevation
Photo #9

done JUL 30 1976

APR 29 1976

PROPERTY OF THE NATIONAL REGISTER



PERFECT CIRCLE
PISTON RINGS

304

Albany
AUTO SUPPLY

CHAMPION

J. B. George Drug Store Building
304 South Main
Shackelford County Courthouse District
Albany Auto Supply
Albany, Texas
Shackelford County
Chip Kaufman
Texas Historical Commission
June, 1974
East Elevation
Photo #10

d.o.c. JUL 30 1976 APR 29 1976

PROPERTY OF THE NATIONAL REGISTER



Blach Building
316 S. Main
Shackelford County Courthouse District
Albany, Texas
Shackelford County
Chip Kaufman
Texas Historical Commission
June, 1974
East Elevation
Photo #11

APR 29 1976

divided JUL 30 1976

PROPERTY OF THE NATIONAL REGISTER

Have a
Pepsi
B&B DRIVE-IN GRILL

PIONEER STORE

FANBANGLE



222 South Main
Shackelford County Courthouse District
Pioneer Store
Albany, Texas
Shackelford County
Chip Kaufman
Texas Historical Commission
June, 1974
East Elevation
Photo #12

done

JUL 30 1976

APR 29 1976

PROPERTY OF THE NATIONAL REGISTER



Original Shackelford County Jail
Shackelford County Courthouse District
Old Jail
Albany, Texas
Shackelford County
Chip Kaufman
Texas Historical Commission
June, 1974
North Elevation
Photo #13

d.v.e. - JUL 30 1976 APR 29 1976

PROPERTY OF THE NATIONAL REGISTER

TX12

13



Original Shackelford County Jail
Shackelford County Courthouse District
Old Jail
Albany, Texas
Shackelford County
Chip Kaufman
Texas Historical Commission
June, 1974
Interior, 2nd Floor Cell East Side of Building
Photo #14

d.v.c.

JUL 30 1976

APR 29 1976

PROPERTY OF THE NATIONAL REGISTER



T. H. Barre House
Shackelford County Courthouse District
422 South Walnut Street
Albany, Texas
Shackelford County
Chip Kaufman
Texas Historical Commission
June, 1974
Southeast Oblique
Photo #15

div. 2 JUL 30 1976

APR 29 1976

PROPERTY OF THE NATIONAL REGISTER



NR

Duffy-Hill House
Shackelford County Courthouse District
301 South Third Street
Albany, Texas
Shackelford County
Chip Kaufman
Texas Historical Commission
June, 1974
NE Oblique
Photo #16

h.o.d. JUL 30 1976

APR 29 1976

PROPERTY OF THE NATIONAL REGISTER

TX 4

7

FIG. # 28



Old Shields Hotel
Shackelford County Courthouse District
Wayne Chapman Residence
Albany, Texas
Shackelford County
Chip Kaufman
Texas Historical Commission
July, 1974
S.W. Oblique
Photo #17

d.v.e. JUL 30 1976

APR 29 1976

PROPERTY OF THE NATIONAL REGISTER



George Wilhelm House
Shackelford County Courthouse District
Albany, Texas
Shackelford County
Chip Kaufman
June, 1974
N.E. Oblique
Photo #18

d.o.e. JUL 30 1976 APR 29 1976

PROPERTY OF THE NATIONAL REGISTER



MAIN ST ABILENE TEX.

South Main Street
Shackelford County Courthouse District
Albany, Texas
Shackelford County
Texas Historical Commission
CA 1900

Early 20th Century view looking south to the
west side of South Main Street
Photo #19

d.o.c. JUL 30 1976 APR 29 1976

PROPERTY OF THE NATIONAL REGISTER

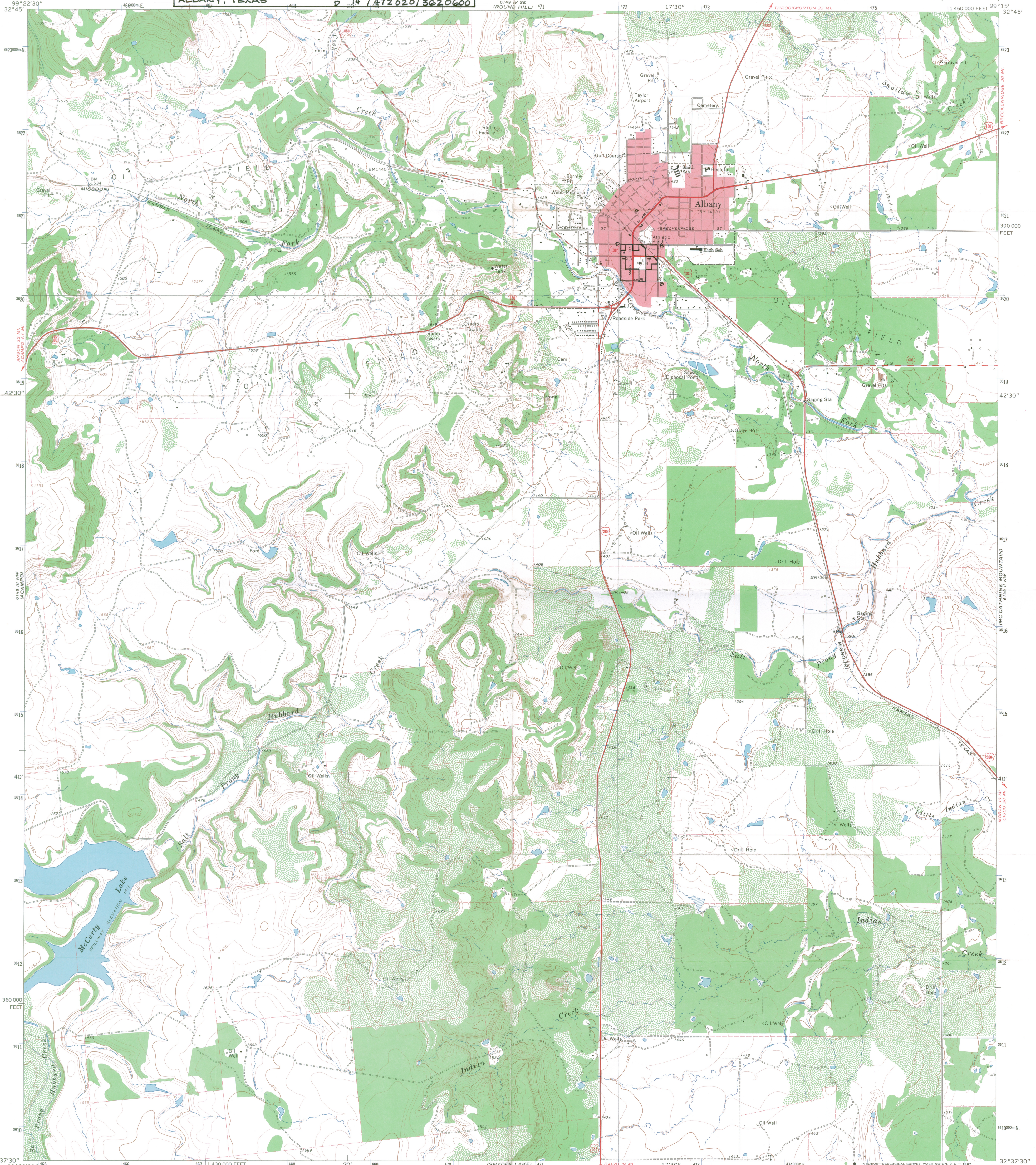


South Main Street
Shackelford County Courthouse District
224, 226, 228, 232 South Main Street
Albany, Texas
Shackelford County
Texas Historical Commission
CA. 1900
Early 20th Century view of the South Portion
Looking West of the 200 Block of South Main
Photo #20

J.S.E. JUL 30 1976

APR 29 1976

PROPERTY OF THE NATIONAL REGISTER



Mapped, edited, and published by the Geological Survey

Control by USGS and USC&GS

Topography by photogrammetric methods from aerial photographs taken 1964. Field checked 1965

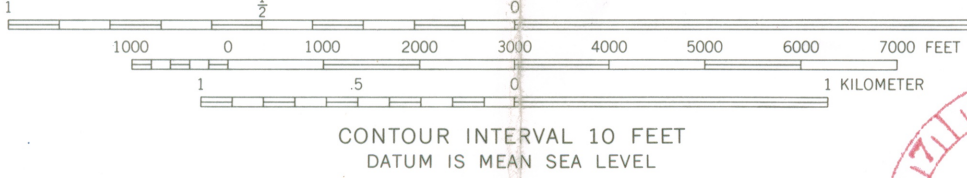
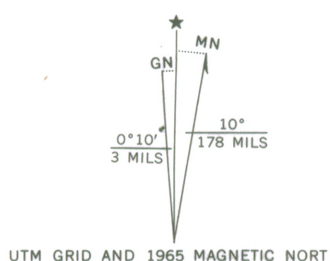
Polyconic projection. 1927 North American datum

10,000-foot grid based on Texas coordinate system, north central zone

1000-meter Universal Transverse Mercator grid ticks, zone 14, shown in blue

Red tint indicates areas in which only landmark buildings are shown

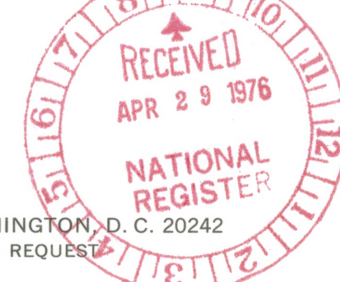
Fine red dashed lines indicate selected fence lines



ROAD CLASSIFICATION	
Heavy-duty	Light-duty
Medium-duty	Unimproved dirt
U.S. Route	State Route



THIS MAP COMPLIES WITH NATIONAL MAP ACCURACY STANDARDS
FOR SALE BY U.S. GEOLOGICAL SURVEY, DENVER, COLORADO 80225, OR WASHINGTON, D.C. 20242
A FOLDER DESCRIBING TOPOGRAPHIC MAPS AND SYMBOLS IS AVAILABLE ON REQUEST



ALBANY, TEX.
N3237.5—W9915.7.5

1965

AMS 6149 III NE—SERIES V882

FEB 19 1974

3299-424

DATE *June 21, 1976*

TELEPHONE REPORT

TIME OF CALL
11:30

AM
PM

1. CALL TO: FROM (Name)

Danny Hardy

2. ADDRESS (Tel. No. if needed)

512/475-3094

3. SUBJECT, PROJECT NO., ETC.

Shackelford County Courthouse Historic District

4. DETAILS OF DISCUSSION

*Fruitt Latimer's signature should be dated
April 26, 1976.*

Level of significance is Local.

*I asked for new sketch map to include
all 34 structures on already enclosed list
and for a continuation sheet to discuss
intrusions.*

NAME OF PERSON PLACING/RECEIVING CALL

Sally Oldham

TITLE

Arch'l Historian

OFFICE

Publ.

ENTRIES IN THE NATIONAL REGISTER

STATE **TEXAS**

Date Entered **JUL 30 1976**

<u>Name</u>	<u>Location</u>
Shackelford County Courthouse Historic District	Albany Shackelford County

Also Notified

Hon. John G. Tower
Hon. Lloyd M. Bentsen
Hon. Omar Burleson
Regional Director, Southwest
Region

State Historic Preservation Officer
Mr. Truett Latimer
Executive Director
Texas Historical Commission
P.O. Box 12276, Capitol Station
Austin, Texas 78711

PR MMott/row 8/4/76

Blach Building, 316 Main Street, Albany, Texas
NAME AND ADDRESS OF PROPERTY

HISTORIC DISTRICT
Shackelford County Courthouse Historic District
STATUTE

STATE
Texas

COUNTY
Shackelford

NAME OF OWNER
Musselman Petroleum and Land Company

ADDRESS OF OWNER
**1600 American Bank Tower, 221 West Sixth Street
Austin, Texas 78701**

DATE CERTIFIED AS: **NOV 20 1978**
 CONTRIBUTING NON-CONTRIBUTING

REMARKS:

11/17/78
DATE OF REQUEST

SHPO OPINION:
 CONTRIBUTING
 NON-CONTRIBUTING
 NO COMMENT

REHABILITATION CERTIFICATION

USDI - NATIONAL PARK SERVICE

NR Data Sheet

DATE: 6/4/76
 Reviewer INITIALS: SO
 (NR) DOE
 JUL 30 1976

NAME AS IT APPEARS IN FEDERAL REGISTER: Shackelford County Courthouse Historic District

OTHER NAMES: Roughly bounded by S. 1st, S. 4th, S. Jacobs, and S. Pecan Sts.

LOCATION: Courthouse Square, bounded by South Main St. on the W, Second St. on the N, Walnut on the E, Third on the S
 STREET & NUMBER
 CITY, TOWN Albany CONGRESSIONAL DISTRICT 17
 STATE Texas VICINITY OF COUNTY code
 048 Shackelford 417

OWNER OF PROPERTY: (Circle) PRIVATE STATE LOCAL GOV'T MUNICIPAL COUNTY OTHER
 ADMINISTRATOR (underline) FEDERAL (AGENCY NAME):

NPS REGION: (CIRCLE) N. ATLANTIC MID ATLANTIC SOUTHEAST MIDWEST
 SOUTHWEST ROCKY MOUNTAIN WEST PACIFIC NORTHWEST

FEATURES:

INTERIOR EXTERIOR ENVIRONS
 Substantially intact-1 Substantially intact-2 Substantially intact-3
 unknown - 4 unknown - 5 unknown - 6
 not applicable - 7 not applicable - 8 Not applicable-9

- Interior, exterior, environs not intact-0

CONDITION - EXCELLENT DETERIORATED UNALTERED ORIGINAL SITE
 GOOD RUINS ALTERED MOVED
 FAIR UNEXPOSED Reconstructed Unknown
 Unexcavated Excavated

ACCESS - Yes-restricted Yes-unrestricted No access Unknown

historic district? YES NO

WITHIN NATIONAL REGISTER HISTORIC DISTRICT? YES NO
 IF YES, NAME:

WITHIN NATIONAL HISTORIC LANDMARK? YES NO
 IF YES, NAME:

ADAPTIVE USE: YES NO Saved? YES NO

FUNCTION(S): (use vocabulary words)
 then- Residences, church, courthouse, commercial bldgs
 now- Same

SIGNIFICANCE:

<input type="checkbox"/> ARCHEOLOGY-PREHISTORIC	<input type="checkbox"/> CONSERVATION	<input type="checkbox"/> LANDSCAPE ARCHITECTURE	<input type="checkbox"/> RELIGION	<input type="checkbox"/> entertainment
<input type="checkbox"/> ARCHEOLOGY-HISTORIC	<input type="checkbox"/> ECONOMICS	<input type="checkbox"/> LAW/Gov't/politics	<input type="checkbox"/> SCIENCE	<input type="checkbox"/> health
<input checked="" type="checkbox"/> AGRICULTURE 4	<input type="checkbox"/> EDUCATION	<input type="checkbox"/> LITERATURE	<input type="checkbox"/> SOCIAL/HUMANITARIAN	<input type="checkbox"/> recreation
<input checked="" type="checkbox"/> ARCHITECTURE	<input type="checkbox"/> ENGINEERING	<input type="checkbox"/> MILITARY	<input type="checkbox"/> TRANSPORTATION	<input type="checkbox"/> settlement
<input type="checkbox"/> ART	<input type="checkbox"/> EXPLORATION	<input type="checkbox"/> MUSIC	<input type="checkbox"/> OTHER (SPECIFY)	<input type="checkbox"/> socio/cultural
<input type="checkbox"/> COMMERCE	<input type="checkbox"/> INDUSTRY	<input checked="" type="checkbox"/> PHILOSOPHY 2		<input type="checkbox"/> urban & commun
<input type="checkbox"/> COMMUNICATIONS	<input type="checkbox"/> INVENTION	<input checked="" type="checkbox"/> POLITICS/GOVERNMENT		planning

Claims

"first" YES NO "oldest" YES NO "only" YES NO

ARCHITECTURAL STYLE: Victorian eclectic courthouse, Italianate elements

architect/m.builder: ² J.E. Flanders (courthouse)

engineer:

landscape/garden designer:

artist/artisan:

interior decorator:

builder/contractor:

ETHNIC GROUP:

NAMES:

personal

(label role & appropriate date)

events

institutional

DATES:

DATE OF CONSTRUCTION (Specific date or 1/4 of century): 1875-1930

DATE(S) OF "MAJOR" ALTERATIONS:

HISTORICALLY SIGNIFICANT DATE(S): 1875-present

SOURCE:

(OF NOMINATION)

PRIVATE

STATE

LOCAL GOV'T

MUNICIPAL

COUNTY

OTHER

FEDERAL AGENCY:

ACREAGE:

(to nearest tenth of an acre)

17

COMMENTS: (include architectural information here)

~~Rock-faced stone architecture with classical stone frame and central 3-story clock tower, 1-2 story stone commercial buildings, residences frame and residences, stone church with corner bell tower~~

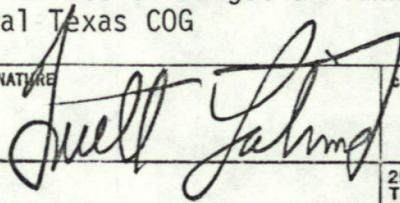
Commercial-residential district of 16 significant primarily masonry, 1 1/2--2-story structures; notable is the rock-faced, 2 1/2-story Shackelford County Courthouse with its central clock tower in the Eclectic-Italianate style.

Second courthouse for Shackelford County together with surrounding late 19th--early 20th C. structures, retains much early character.

SIGNIFICANCE: (maximum two sentences)

frontier

~~This is the 2nd County Courthouse, to be built along with the surrounding late 19th and early 20th century buildings form the historic core of Albany this frontier west Texas community.~~

FEDERAL ASSISTANCE		2. APPLICANT'S APPLICATION		3. STATE APPLICATION IDENTIFIER	
1. TYPE OF ACTION <input type="checkbox"/> PREAPPLICATION <input checked="" type="checkbox"/> APPLICATION <small>(Mark appropriate box)</small> <input type="checkbox"/> NOTIFICATION OF INTENT (Cpt.) <input type="checkbox"/> REPORT OF FEDERAL ACTION		a. NUMBER		a. NUMBER TX 7-04-07-001	
		b. DATE 19 77 03 15		b. DATE Year month day ASSIGNED 19 77 04 27	
4. LEGAL APPLICANT/RECIPIENT		5. FEDERAL EMPLOYER IDENTIFICATION NO.		6. PROGRAM (From Federal Catalog)	
a. Applicant Name : State Historic Preservation Office		74-6016195		a. NUMBER 115 • 9104	
b. Organization Unit : Texas Historical Commission				b. TITLE Historic Preservation	
c. Street/P.O. Box : P.O. Box 12276					
d. City : Austin		e. County : Travis			
f. State : Texas		g. ZIP Code: 78711			
h. Contact Person (Name & telephone No.) : Truett Latimer (512) 475-3094					
7. TITLE AND DESCRIPTION OF APPLICANT'S PROJECT Shackelford County Courthouse Historic District: Courthouse Development Project-Phase I, Shackelford County, Albany, Texas. Designed by architect J. E. Flanders of Dallas, the courthouse was erected on the courthouse square in 1883. The project objective is to preserve the courthouse by repairing roof, repointing stonework, repainting windows, doors, clock tower, cornice and telescope.		8. TYPE OF APPLICANT/RECIPIENT A-State B-Interstate C-Substate District D-City E-County F-School District G-Special Purpose District H-Community Action Agency I-Higher Educational Institution J-Indian Tribe K-Other (Specify):		Enter appropriate letter <input checked="" type="checkbox"/> A	
10. AREA OF PROJECT IMPACT (Names of cities, counties, States, etc.)		11. ESTIMATED NUMBER OF PERSONS BENEFITING		9. TYPE OF ASSISTANCE A-Basic Grant B-Supplemental Grant C-Loan D-Insurance E-Other Enter appropriate letter(s) <input type="checkbox"/> A <input type="checkbox"/>	
13. PROPOSED FUNDING		14. CONGRESSIONAL DISTRICTS OF:		12. TYPE OF APPLICATION A-New B-Renewal C-Revision D-Continuation E-Augmentation Enter appropriate letter <input checked="" type="checkbox"/> A	
a. FEDERAL \$ 13,500 .00		a. APPLICANT statewide		15. TYPE OF CHANGE (For 12c or 12e) A-Increase Dollars B-Decrease Dollars C-Increase Duration D-Decrease Duration E-Cancellation F-Other (Specify):	
b. APPLICANT 13,500 .00		b. PROJECT 17		Enter appropriate letter(s) <input type="checkbox"/> <input type="checkbox"/> <input type="checkbox"/>	
c. STATE .00		16. PROJECT START DATE Year month day 19 78 06 25		19. EXISTING FEDERAL IDENTIFICATION NUMBER	
d. LOCAL .00		17. PROJECT DURATION 12 Months			
e. OTHER .00		18. ESTIMATED DATE TO BE SUBMITTED TO FEDERAL AGENCY			
f. TOTAL \$ 27,000 .00		1978 06 25			
20. FEDERAL AGENCY TO RECEIVE REQUEST (Name, City, State, ZIP code) OAHF, HCRS, Washington, DC 20240		21. REMARKS ADDED <input type="checkbox"/> Yes <input checked="" type="checkbox"/> No			
22. THE APPLICANT CERTIFIES THAT		a. To the best of my knowledge and belief, data in this preapplication/application are true and correct, the document has been duly authorized by the governing body of the applicant and the applicant will comply with the attached assurances if the assistance is approved.		b. If required by OMB Circular A-95 this application was submitted, pursuant to instructions therein, to appropriate clearinghouses and all responses are attached: <input type="checkbox"/> None <input checked="" type="checkbox"/> Response attached	
23. CERTIFYING REPRESENTATIVE Truett Latimer, State Historic Preservation Officer		b. SIGNATURE 		c. DATE SIGNED Year month day 19 78 06 20	
24. AGENCY NAME Department of the Interior		25. APPLICATION RECEIVED Year month day 19 78 6 28			
26. ORGANIZATIONAL UNIT Heritage Conservation & Recreation		27. ADMINISTRATIVE OFFICE Grants Administration Div.		28. FEDERAL APPLICATION IDENTIFICATION	
29. ADDRESS 18th and C Streets NW, Washington, D.C. 20240		30. FEDERAL GRANT IDENTIFICATION 48-8876			
31. ACTION TAKEN		32. FUNDING		34. STARTING DATE Year month day 19 78 8 1	
<input checked="" type="checkbox"/> a. AWARDED		a. FEDERAL \$ 13,500 .00		35. CONTACT FOR ADDITIONAL INFORMATION (Name and telephone number) Stephen D. Newman 202 523-5472	
<input type="checkbox"/> b. REJECTED		b. APPLICANT 13,500 .00		36. ENDING DATE Year month day 19 80 9 30	
<input type="checkbox"/> c. RETURNED FOR AMENDMENT		c. STATE .00		37. REMARKS ADDED <input type="checkbox"/> Yes <input checked="" type="checkbox"/> No	
<input type="checkbox"/> d. DEFERRED		d. LOCAL .00			
<input type="checkbox"/> e. WITHDRAWN		e. OTHER .00			
		f. TOTAL \$ 27,000 .00			
38. FEDERAL AGENCY A-95 ACTION		a. In taking above action, any comments received from clearinghouses were considered. If agency response is due under provisions of Part 1, OMB Circular A-95, it has been or is being made.		b. FEDERAL AGENCY A-95 OFFICIAL (Name and telephone no.) Same as #35	

JUN 28 1978