

(Oct. 1990)

**United States Department of the Interior
National Park Service**

**NATIONAL REGISTER OF HISTORIC PLACES
REGISTRATION FORM**



1. NAME OF PROPERTY

HISTORIC NAME: Franklin Carnegie Library
OTHER NAME/SITE NUMBER: Carnegie Library

2. LOCATION

STREET & NUMBER: 315 East Decherd
CITY OR TOWN: Franklin
STATE: Texas **CODE:** TX **COUNTY:** Robertson **CODE:** 395
NOT FOR PUBLICATION: N/A
VICINITY: N/A **ZIP CODE:** 77856

3. STATE/FEDERAL AGENCY CERTIFICATION

As the designated authority under the National Historic Preservation Act, as amended, I hereby certify that this (x nomination) (___ request for determination of eligibility) meets the documentation standards for registering properties in the National Register of Historic Places and meets the procedural and professional requirements set forth in 36 CFR Part 60. In my opinion, the property (x meets) (___ does not meet) the National Register criteria. I recommend that this property be considered significant (___ nationally) (___ statewide) (x locally). (___ See continuation sheet for additional comments.)

10-6-05
Date

Signature of certifying official _____
State Historic Preservation Officer, Texas Historical Commission
State or Federal agency and bureau _____

In my opinion, the property ___ meets ___ does not meet the National Register criteria. (___ See continuation sheet for additional comments.)

Signature of commenting or other official _____ Date _____
State or Federal agency and bureau _____

4. NATIONAL PARK SERVICE CERTIFICATION

I hereby certify that this property is:

- entered in the National Register
___ See continuation sheet.
- determined eligible for the National Register
___ See continuation sheet
- determined not eligible for the National Register
- removed from the National Register
- other (explain): _____

Signature of the Keeper

Date of Action
11.25.05

5. CLASSIFICATION

OWNERSHIP OF PROPERTY: Public-Local

CATEGORY OF PROPERTY: Building

NUMBER OF RESOURCES WITHIN PROPERTY:	CONTRIBUTING	NONCONTRIBUTING
	1	0 BUILDINGS
	0	0 SITES
	0	0 STRUCTURES
	0	0 OBJECTS
	1	0 TOTAL

NUMBER OF CONTRIBUTING RESOURCES PREVIOUSLY LISTED IN THE NATIONAL REGISTER: 0

NAME OF RELATED MULTIPLE PROPERTY LISTING: N/A

6. FUNCTION OR USE

HISTORIC FUNCTIONS: EDUCATION=Library, School, SOCIAL=Civic

CURRENT FUNCTIONS: EDUCATION=Library

7. DESCRIPTION

ARCHITECTURAL CLASSIFICATION: Late 19th and 20th Century Revivals= Italian Renaissance

MATERIALS: FOUNDATION CONCRETE
WALLS BRICK
ROOF METAL
OTHER STUCCO

NARRATIVE DESCRIPTION (see continuation sheets 7-5 through 7-7).

United States Department of the Interior
National Park Service

National Register of Historic Places Continuation Sheet

Section 7 Page 5

Franklin Carnegie Library
Franklin, Robertson County, Texas

The 1914 Franklin Carnegie Library is an Italian Renaissance red-brick single-story building with raised basement. The library is rectangular in plan with a projecting bay on the south-facing rear entrance. Full-height arched windows along the north and south elevations light the building and are a dominant design feature highlighted by a corbelled buff brick surround. The roof has a low pitch and deep eaves with a pressed metal roofing material in imitation of the red clay tile typical of the Italian Renaissance. The building is an excellent example of an Italian Renaissance library built in Texas with funds from the Carnegie Foundation.

The city of Franklin is the county seat of Robertson County and is located in central Texas. The Franklin Carnegie Library rests on a partially treed lot in downtown Franklin at the intersection of Owensville Street, Dechard Street, Highway 79, and a set of active railroad tracks. A fast-food restaurant and parking lot adjoin the property to the west.

Exterior

The Italian Renaissance Franklin Carnegie Library is a brick building with a low-pitch, deep-eaved roof. The roofing material is pressed metal but the color and shape are intended to mimic red clay Spanish tile. In contrast to the red brick body of the building, buff brick is used to highlight the window surrounds, water table, and frieze band. The main entry faces north onto Dechard Street with a concrete stair leading to the main level. The rectangular plan building has a projecting bay with secondary entrance and handicap accessible ramp on the south elevation. The classically inspired design is strictly symmetrical with rows of full height arched windows on the north and south elevations and single, square, divided-light windows on the shorter east and west elevations.

The one-story library has a raised basement that is differentiated by its brickwork with a recessed course every five rows, a pattern that ends at the water table. Half windows that correlate to the basement are surrounded by a thick band of stucco, which continues around the entire base of the building. Although proportionally the basement accounts for only about a third of the building, it acts as a base to the piano nobile style main floor.

The main floor of the library is dominated by rows of arched windows extending from the water table to the frieze course. The water table acts as a continuous sill for all the windows. The windows consist of a sill, recessed wood panel, an elongated four over four light window, and an arched transom divided into four vertical sections. These windows are a dominant design feature surrounded by three courses of stepped buff brick with a stylized red brick keystone. The doors have surrounds identical to the window surrounds. The frieze is minimally ornamented with a few decorative tiles and the words Carnegie Library on the longer elevations.

The deep eaves of the hipped roof are supported by elongated modillion-style brackets. The low-pitched roof is hipped with a smaller cross hip covering the projecting bay. A simple red brick chimney sits at the northeast corner of the roof in line with the exterior wall of the building.

United States Department of the Interior
National Park Service

National Register of Historic Places
Continuation Sheet

Section 7 Page 6

Franklin Carnegie Library
Franklin, Robertson County, Texas

The north elevation, which is the primary entrance, is accessed by a concrete stair with flared base and central metal railing. This elevation consists of five arched openings closely spaced, leaving space at the outer edges of the façade. The center arch houses a wood double door. Directly below each window is a corresponding basement window.

The south elevation, which features the projecting bay has a solid double door entry accessed by a handicap ramp, which slopes from the entry to a point beyond the east side of the building and leads to a concrete path that wraps the building. The entry doors are wood with an arched transom set in a stepped-brick surround. Narrow sidelights consisting of a wood panel base, elongated 2/2 window and divided light transom flank the front door. The sidelights are framed by a squared off version of the arched window surround. The only openings on the side elevations of the projecting bay are basement windows below the water table. On either side of the projecting entry bay is one full-height arched window on the main body of the building. A non-historic addition at the west side of the north elevation has been removed leaving the concrete foundation and a basement entry exposed.

The narrow east and west elevations are identical with a large square window divided into three sections vertically and horizontally. Like the arched windows it is divided into wood panel base, window, and transom. A window AC unit has been placed in the lower south window of both elevations. Below the water table, the basement window is of equal width and is divided into three, corresponding to the window above.

Interior

Like the exterior, the interior is symmetrical and functionally arranged. The main portion of the building is divided into three spaces, a narrow, central administrative area with reading rooms of equal size on either side. On the south side the entry vestibule contains three interior doors leading to each of the three interior areas.

Alterations

Although built as a library in 1914, the building was quickly converted into classrooms. From 1918 until 1984 the building functioned as a school building. In 1986 it was restored and returned to library use. During the rehabilitation a non-historic storage room at the interior southwest corner was removed, although the mark where it attached to the building and a basement entry door remain. The handicap accessible ramp was also added. There are no historic photos of the south elevation so it is unclear if it historically had an entrance, and if not, when the second entrance was added. In Carnegie Libraries with similar floor plans, such as Belton, Terrell, and Palestine the rear bay housed a secondary reading room or storage rather than an entry foyer. At the time of the 1986 rehabilitation the second door had already been added and was accessed by an unsympathetic wood stair. Currently the building suffers from a lack of maintenance. According to records there were water problems in the basement as early as the 1920s and this continues to be a problem.

United States Department of the Interior
National Park Service

National Register of Historic Places
Continuation Sheet

Section 7 Page 7

Franklin Carnegie Library
Franklin, Robertson County, Texas

Other than the handicap accessible ramp and basement excavation, the building retains its 1914 appearance to a large degree. The Italian Renaissance design, defined by symmetry, arched openings and low pitched bracketed roof are all intact and the building is easily identifiable as a Carnegie Library. The Franklin Carnegie Library retains integrity of location, design, setting, materials, workmanship, feeling and association to a high degree.

8. STATEMENT OF SIGNIFICANCE

APPLICABLE NATIONAL REGISTER CRITERIA

- A** PROPERTY IS ASSOCIATED WITH EVENTS THAT HAVE MADE A SIGNIFICANT CONTRIBUTION TO THE BROAD PATTERNS OF OUR HISTORY.
- B** PROPERTY IS ASSOCIATED WITH THE LIVES OF PERSONS SIGNIFICANT IN OUR PAST.
- C** PROPERTY EMBODIES THE DISTINCTIVE CHARACTERISTICS OF A TYPE, PERIOD, OR METHOD OF CONSTRUCTION OR REPRESENTS THE WORK OF A MASTER, OR POSSESSES HIGH ARTISTIC VALUE, OR REPRESENTS A SIGNIFICANT AND DISTINGUISHABLE ENTITY WHOSE COMPONENTS LACK INDIVIDUAL DISTINCTION.
- D** PROPERTY HAS YIELDED, OR IS LIKELY TO YIELD, INFORMATION IMPORTANT IN PREHISTORY OR HISTORY.

CRITERIA CONSIDERATIONS: N/A

AREAS OF SIGNIFICANCE: EDUCATION, ARCHITECTURE

PERIOD OF SIGNIFICANCE: 1914-1955

SIGNIFICANT DATES: 1914

SIGNIFICANT PERSON: N/A

CULTURAL AFFILIATION: N/A

ARCHITECT/BUILDER: Wayne Patterson, Architect

NARRATIVE STATEMENT OF SIGNIFICANCE (see continuation sheets 8-8 through 8-12).

9. MAJOR BIBLIOGRAPHIC REFERENCES

BIBLIOGRAPHY (see continuation sheet 9-13).

PREVIOUS DOCUMENTATION ON FILE (NPS): N/A

- preliminary determination of individual listing (36 CFR 67) has been requested.
- previously listed in the National Register
- previously determined eligible by the National Register
- designated a National Historic Landmark
- recorded by Historic American Buildings Survey #
- recorded by Historic American Engineering Record #

PRIMARY LOCATION OF ADDITIONAL DATA:

- State historic preservation office (*Texas Historical Commission*)
- Other state agency
- Federal agency
- Local government
- University
- Other -- Specify Repository:

United States Department of the Interior
National Park Service

National Register of Historic Places Continuation Sheet

Section 8 Page 8

Franklin Carnegie Library
Franklin, Robertson County, Texas

Franklin's Carnegie Library is one of thirty-two libraries built in Texas with funds from the Carnegie Corporation founded by legendary philanthropist Andrew Carnegie. Built in 1914, the Franklin Carnegie Library met the city's demand for a public library. Before the library, the more than 1000 volumes owned by the city were stored in City Hall. In 1918 an elementary school began using one of the library rooms for classroom space. Soon the school functions took over and the building was used school until 1984. After being rehabilitated in 1986, the building once again serves as a library for the city and county. Although cities that were granted Carnegie Libraries were responsible for the design of their buildings, the Carnegie Corporation issued guidelines and critiqued plans. The result is that Carnegie Libraries across the country are based on the same contemporary ideas about library design and are usually executed in a classical style. The design of the Renaissance Revival Franklin Carnegie Library was clearly influenced by its benefactor's guidelines and is almost immediately recognizable for what it is. The building closely resembles the Carnegie Library in Palestine, Texas (NR 1988) built the same year by a different architect. The Franklin County library is eligible for listing in the National Register of Historic Places under criterion A in the area of education for its association with the Carnegie Library program and the Franklin Public School, and under criterion C in the area of architecture as a good example of an Italian Renaissance Carnegie Library.

The City of Franklin is located in central Texas approximately 100 miles northeast of Austin. Originally called Morgan, Franklin was established on the Missouri Pacific Railroad line in 1872. In 1879 it became the county seat, but when the town applied for a post office, it was found that there was already a town called Morgan. The town was renamed Franklin after the original county seat. By 1885 Franklin had a post office, stone courthouse, three hotels, three churches, a school, and several other assorted businesses¹. In 1913 a windstorm destroyed or damaged all of the public buildings in town.

On January 10, 1913, Franklin Mayor, R. M. Cole requested an application from the Carnegie Corporation of New York to build a library in Franklin. Because the 1900 census had counted a population of 869, the Corporation thought the town of Franklin was too small to support a library but sent them an application form anyway.

Andrew Carnegie and the Carnegie Corporation

Andrew Carnegie was a self-made millionaire best known for his philanthropy. He sold his Pittsburgh steel company to J.P. Morgan in 1900 and devoted his life to philanthropic activities and writings. In his book, *The Gospel of Wealth*, he asserts that personal wealth beyond that required to meet the needs of one's family should be regarded as a trust fund to be administered for the benefit of the community. Most notable of his gifts were the establishment of free public libraries. Rather than encourage a "free ride", Carnegie hoped to provide a means for self-improvement and greater opportunities through education. Between 1886 and 1917 the Carnegie Corporation spent over \$56 million to build 2,509 libraries throughout the English-speaking world.

¹"Franklin, Texas", Handbook of Texas Online

United States Department of the Interior
National Park Service

National Register of Historic Places Continuation Sheet

Section 8 Page 9

Franklin Carnegie Library
Franklin, Robertson County, Texas

Cities that were granted libraries were responsible for their maintenance and were asked to pledge 10 percent of the amount of the gift for that purpose

Texas was late to embrace the public library movement. Before the Carnegie program there were only a few public libraries in the state, mostly in large cities like Galveston, Houston, El Paso and San Antonio. The first Carnegie Library in Texas was built in 1898 in Pittsburg, a small mining town. During the course of the program, Carnegie gave 34 gifts to Texas Communities totaling \$645,000. Thirty-two of these gifts were for the construction of libraries.²

Franklin Carnegie Library

In February of 1913, the Franklin City Council sent an application to the Carnegie Corporation requesting \$10,000 for the erection of a library. Children of the town had collected \$1800 for the fund, and the Council promised to buy all necessary books and maintain the library according to Mr. Carnegie's standards.

Because of the Corporation's concern that Franklin was too small, several letters were written to campaign for the library and assure the Corporation that the census numbers were outdated. Superintendent of the Public Schools, Mr. W. C. Crane, wrote that Franklin had been incorporated since the last census and "now has a population of 1500 or more". He wrote that there was a scholastic population of 571 with thirteen teachers, and that the people were progressive and desirous of doing all they could to raise the educational and cultural standing of the community.³

The City Secretary, W.L. Blackmon, wrote saying that an actual count of the Franklin's population had been taken in 1912 and there were 1075 whites and 150 blacks⁴. Mayor Cole wrote that the city limits would be expanded in the near future and that by the time the library was constructed the population of Franklin would be 1800 and the library would serve 3000.⁵

Along with these letters, the application itself contained the following information.

Population: 1300

Library of 1000 volumes housed in a 16 x 16 room in City Hall

Finances according to 1912:

City Appropriation: none

Bequests: 500 volumes

Miscellaneous: \$40.00

Council will levy tax and appropriate amount sufficient to meet your requirements.

The site has been bought and paid for.

² "Carnegie Libraries" Handbook of Texas Online

³ "Franklin Carnegie Library History" File, Franklin Carnegie Library

⁴ Franklin Carnegie Library RTHL file

⁵ "Franklin Carnegie Library History" File, Franklin Carnegie Library

United States Department of the Interior
National Park Service

National Register of Historic Places
Continuation Sheet

Section 8 Page 10
Texas

Franklin Carnegie Library
Franklin, Robertson County,

Amount now collected toward building: \$1800.00⁶

The Carnegie Corporation's response came from James Bertram, Secretary of the corporation, in April. He wrote that if the city agreed by resolution of the council to maintain a free public library at a cost of not less than \$750 a year and to provide a suitable site for the building, the Carnegie Corporation of New York would be glad to give \$7,500 to erect a free public library building in Franklin, Texas.⁷

Library Design

In addition to funding future upkeep of the buildings, applicants for Carnegie Libraries were responsible for securing the land and providing designs for the libraries. Although libraries were being designed at the local level, clear similarities exist between Carnegie Libraries across the country. Designs had to be approved by the Corporation, and the Corporation had very specific ideas about design and efficiency. The Carnegie Corporation never supplied plans, but James Bertram reviewed all plans, and in 1911 he produced a booklet called "Notes on the Erection of Library Buildings" which included schematic plans and advice on library design.⁸

The Carnegie Corporation promoted innovative library designs and efficiency was of the utmost importance. Libraries were designed so that one centrally-located librarian could supervise the whole building, rooms were to be less monumental in scale and therefore less intimidating, and books were located in the reading rooms rather than in stacks which required the assistance of a librarian. The Corporation recommended one-story buildings without full height interior partitions, and basements but only for auxiliary functions. No mention of architectural style is made in the 'Notes', but most Carnegie libraries are symmetrical buildings with some sort of Classical Revival or Beaux Artes styling.⁹

Apparently Mr. Bertram's first letter to the City of Franklin did not include a copy of "Notes on the Erection of Library Buildings", because Franklin's first drawings were rejected. The plan provided for two reading rooms with the librarian's desk arranged so that it would command both rooms. Additional room for stacks was provided in the basement. A lecture room to be used by Texas University Extension Department and A & M Colleges was planned for lectures on literary and agricultural subjects. The Corporation responded that they wanted "a library building, not an auditorium with a couple of small library rooms" and sent a copy of Bertram's booklet with their response.¹⁰

⁶ "Franklin Carnegie Library History" File, Franklin Carnegie Library

⁷ Ibid.

⁸ Van Slyck

⁹ Ibid.

¹⁰ "Franklin Carnegie Library History" File, Franklin Carnegie Library

United States Department of the Interior
National Park Service

National Register of Historic Places
Continuation Sheet

Section 8 Page 11
Texas

Franklin Carnegie Library
Franklin, Robertson County,

Franklin's revised plans were accepted on July 30, 1913. These plans showed the basement as an auditorium furnished with theater seats. The symmetry and formality of the Italian Renaissance design gives the building a sense of grandness and its civic function while the red tile roof and deep eaves give the building a distinctly regional character.

Architect for the project was Wayne Patterson of Temple. There is an unmistakable similarity between the Carnegie Library in Franklin and the one in Palestine, located seventy miles to the northeast. A sketch for the Palestine Carnegie Library signed by Wayne Patterson indicates that he may have submitted a design proposal for that project. Although the design shows a more ornate building, including statuary niches at the outer corners, it was clearly a prototype for both buildings. Both the Franklin and Palestine libraries feature red tile roofs, symmetrical full height arched windows and a piano nobile. The principal difference is that Palestine is a T plan with a rear wing. The Palestine Carnegie Library was designed by C.C. McKim (no relation to McKim Mead & White).

According to the National Register nomination for the Palestine Carnegie Library, the two libraries are somewhat unique in Texas where most Carnegie Libraries were designed in the Beaux Artes Style and, particularly those built earlier, are on a much grander scale such as those in Belton, Terrell and Ballinger.

Between the Palestine and Franklin Carnegie Libraries it is impossible to say which building influenced the other. Both were initiated in 1913 and completed in 1914, although the Palestine library appears to be just a few months ahead of the schedule of Franklin. Both are modeled on the 1910 University of Texas Library by Cass Gilbert (Battle Hall, NR 1970), which was in turn modeled after the Boston Public Library by McKim, Mead & White (1887-1893) and the Bibliotheque Ste. Genevieve in Paris (1845-1820). The Texas adaptations feature significantly wider overhangs and Spanish tile roofs.¹¹

The Franklin Carnegie Library

Despite the Carnegie Corporations intentions, the Franklin Carnegie Library only functioned as a library for a few years. Apparently economics and other more pressing needs quickly transformed the building into a school. The Franklin Public School, located directly across the street from the library, needed more space and in August 1914 a committee was appointed to obtain one room for a first grade classroom. When school opened in September 1915, the east room became a schoolroom with Mrs. Stella Cole as the first grade teacher. The west room remained a library and was open a few hours each week. The Librarian, Emma Decherd worked part time until 1915, after that it is not known who supervised the library. In 1918 the building stopped being used as a library altogether. Between 1918 and 1984 the building functioned exclusively as a school. Home

¹¹ Palestine Carnegie Library, NR

United States Department of the Interior
National Park Service

National Register of Historic Places Continuation Sheet

Section 8 Page 12
Texas

Franklin Carnegie Library
Franklin, Robertson County,

Economics classes were held in the two upstairs rooms and the basement was used over the years for shop classes, dressing rooms, and housing for the superintendent.

Apparently the fate of the Franklin Carnegie Library was not unique in Texas. A 1916 report to the Carnegie Corporation found that Texas libraries were poorly stocked and badly run. It was suggested that funds would be better used for books and staffing as well as for buildings. It was shortly after this report that the corporation stopped funding buildings and began to direct its attention to educating librarians.

When the school vacated the library building in 1984 the Robertson County Library, which had been established in 1960, entered into a joint agreement with the city to refurbish the building and re-open it as a library. The library re-opened in 1986 and since then the Franklin Carnegie Library has been used exclusively as a library

The Franklin Carnegie Library represents the dedication of both Andrew Carnegie and the town of Franklin to bettering the lives of citizens through education. Although the building served in a different capacity than the Carnegie Corporation intended, it served perhaps a more pressing educational need for classroom space. The building also represents the adaptation of a library archetype to a smaller scale and a regional interpretation. The building is an excellent local example of an Italian Renaissance library and is eligible for listing in the National Register of Historic Places under criterion C in the area of architecture. It is additionally eligible under criterion A in the area of education. Since its construction the Franklin Carnegie Library has served the educational needs of the community first as a library, then a school, and once again as a library. The library represents both the town of Franklin's commitment to education and the Carnegie Corporation's extraordinary contribution to the development of small town libraries.

United States Department of the Interior
National Park Service

National Register of Historic Places Continuation Sheet

Section 9 Page 13

Franklin Carnegie Library
Franklin, Robertson County, Texas

Bibliography

Andrew Carnegie, Biography, www.carnegie.org/sub/about/biography

“Carnegie Libraries” Handbook of Texas Online, www.tsha.utexas.edu/handbook/online

“Franklin, Texas” Handbook of Texas Online, www.tsha.utexas.edu/handbook/online

“Franklin Carnegie Library History” File, Franklin Carnegie Library

Franklin Carnegie Library Recorded Texas Historic Landmark (RTHL) file

Franklin City Council Minutes

“Palestine Carnegie Library” National Register Nomination (NR), 1988

Robertson County Appraisal District Records

Robertson County Records

Van Slyck, Abigail, *Carnegie Library Architecture*. www/carnegoe-libraries.org/styles

10. GEOGRAPHICAL DATA

ACREAGE OF PROPERTY: less than one acre (.215 acres)

UTM REFERENCES

<u>Zone</u>	<u>Easting</u>	<u>Northing</u>
14	740152	3435346

VERBAL BOUNDARY DESCRIPTION East part of Block B original town site of Franklin. All that triangular shaped lot or plot of land, bounded on the north by Decherd, on the east and south by the International and Great Northern Railroad, on the west by the alley lying east of Block B.

BOUNDARY JUSTIFICATION Nomination includes all property historically associated with the building

11. FORM PREPARED BY

NAME/TITLE: Cathy Lazarus, Chair (with assistance from Hannah Vaughan, THC staff)

ORGANIZATION: Robertson County Historical Commission

DATE: 5/15/05

STREET & NUMBER: 118 West 4th St

TELEPHONE: 979/279-2173

CITY OR TOWN: Hearne

STATE: TX

ZIP CODE: 77859

ADDITIONAL DOCUMENTATION

CONTINUATION SHEETS

MAPS

PHOTOGRAPHS (see continuation sheet Photo 21 through Photo 22)

ADDITIONAL ITEMS (see continuation sheet Figures 14 through Figures 20)

PROPERTY OWNER

NAME: The Honorable Charles Ellison, City of Franklin, TX

STREET & NUMBER: 319 N. Bremond St

TELEPHONE: 979/282-3257

CITY OR TOWN: Franklin

STATE: TX

ZIP CODE: 77856

United States Department of the Interior
National Park Service

National Register of Historic Places Continuation Sheet

Section FIGURES Page 14

Franklin Carnegie Library
Franklin, Robertson County, Texas

Figure 1 First Floor Plan

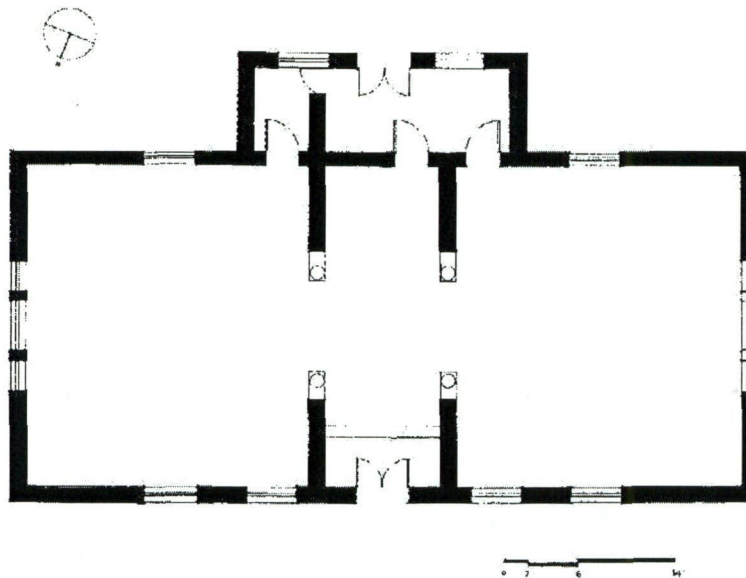


Figure 2 Basement Plan

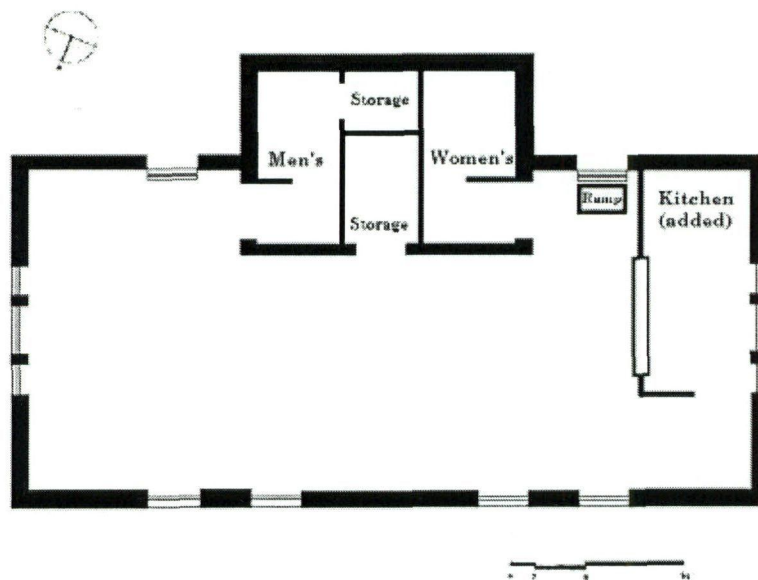


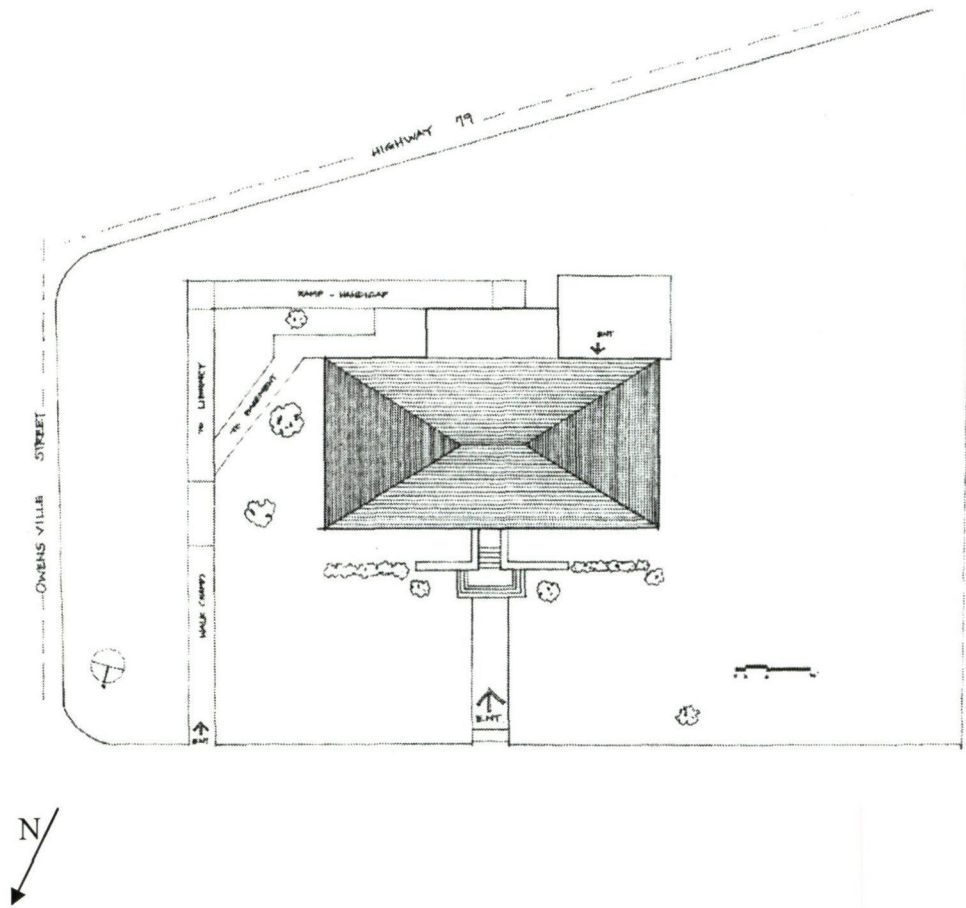
Figure 3 Site Plan

United States Department of the Interior
National Park Service

National Register of Historic Places Continuation Sheet

Section FIGURES Page 15

Franklin Carnegie Library
Franklin, Robertson County, Texas



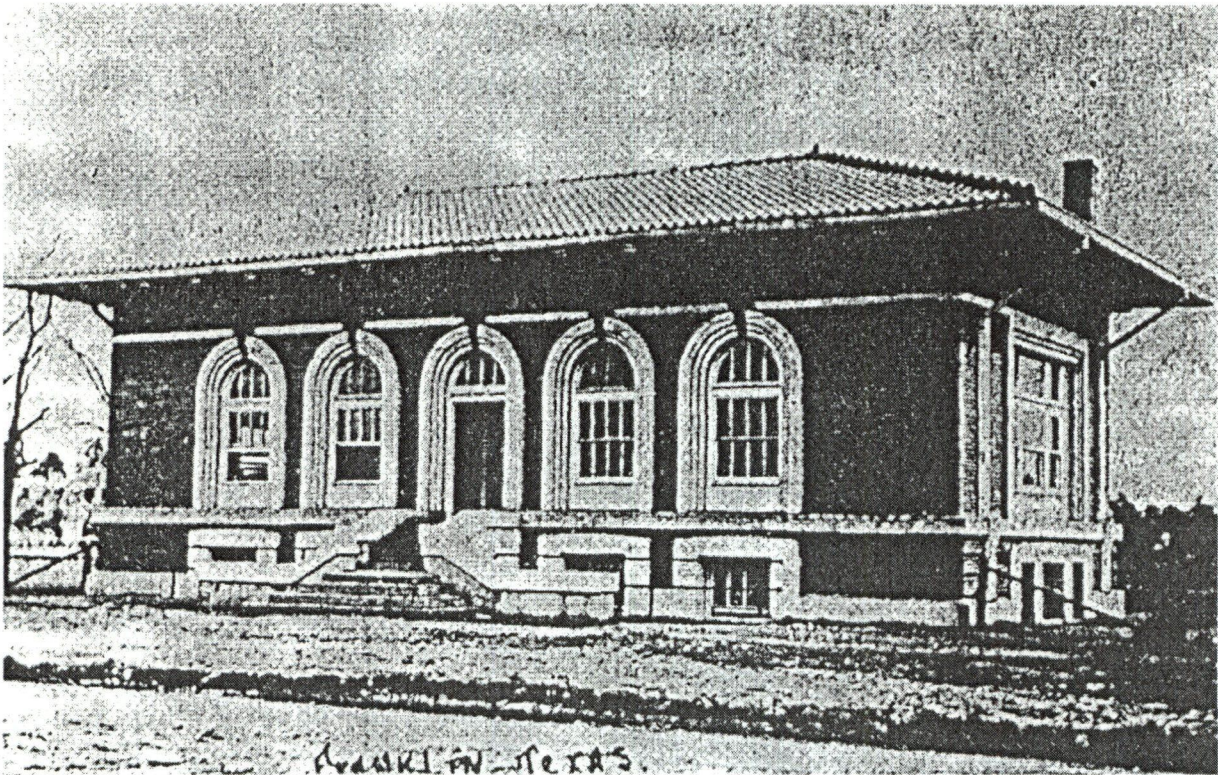
United States Department of the Interior
National Park Service

National Register of Historic Places
Continuation Sheet

Section FIGURES Page 16

Franklin Carnegie Library
Franklin, Robertson County, Texas

Figure 4 Franklin Carnegie Library 1918



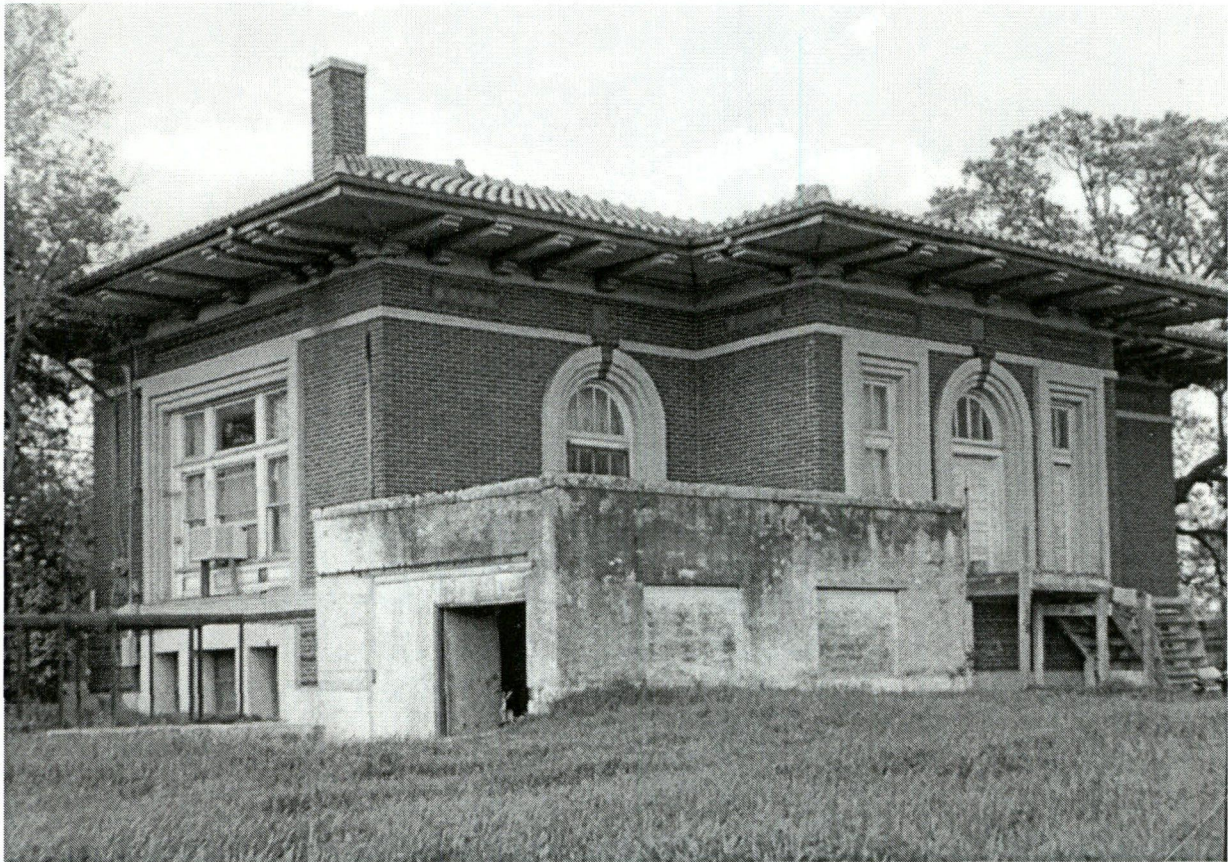
United States Department of the Interior
National Park Service

National Register of Historic Places
Continuation Sheet

Section FIGURES Page 17

Franklin Carnegie Library
Franklin, Robertson County, Texas

Figure 5 North elevation of Franklin Carnegie library in 1986 before rehabilitation



United States Department of the Interior
National Park Service

National Register of Historic Places
Continuation Sheet

Section FIGURES Page 18

Franklin Carnegie Library
Franklin, Robertson County, Texas

Figure 6 Undated photo of school children on library steps



United States Department of the Interior
National Park Service

National Register of Historic Places
Continuation Sheet

Section FIGURES Page 19

Franklin Carnegie Library
Franklin, Robertson County, Texas

Figure 7 1914 Palestine Carnegie Library, from NR files

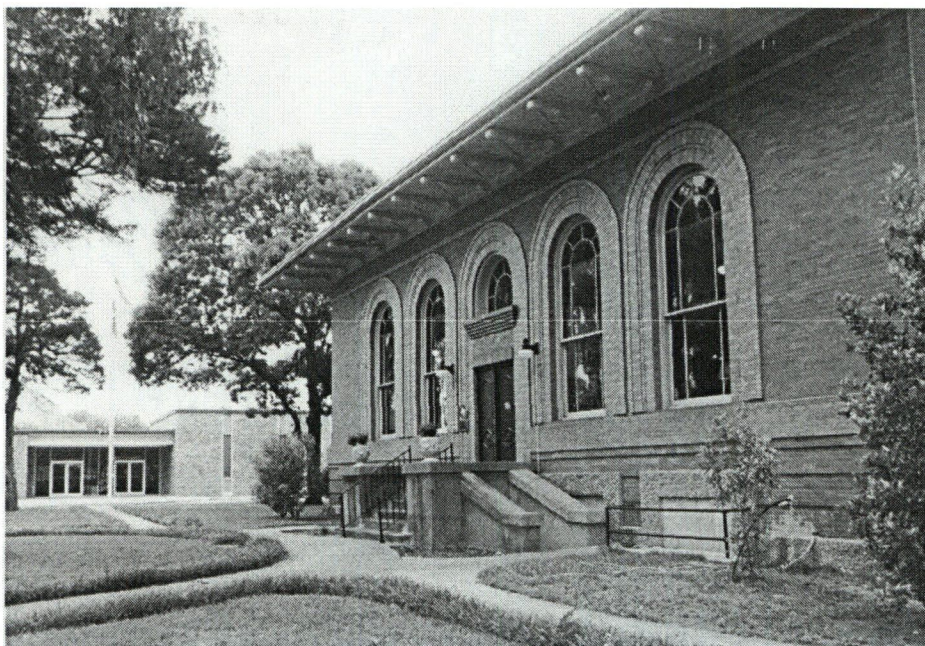
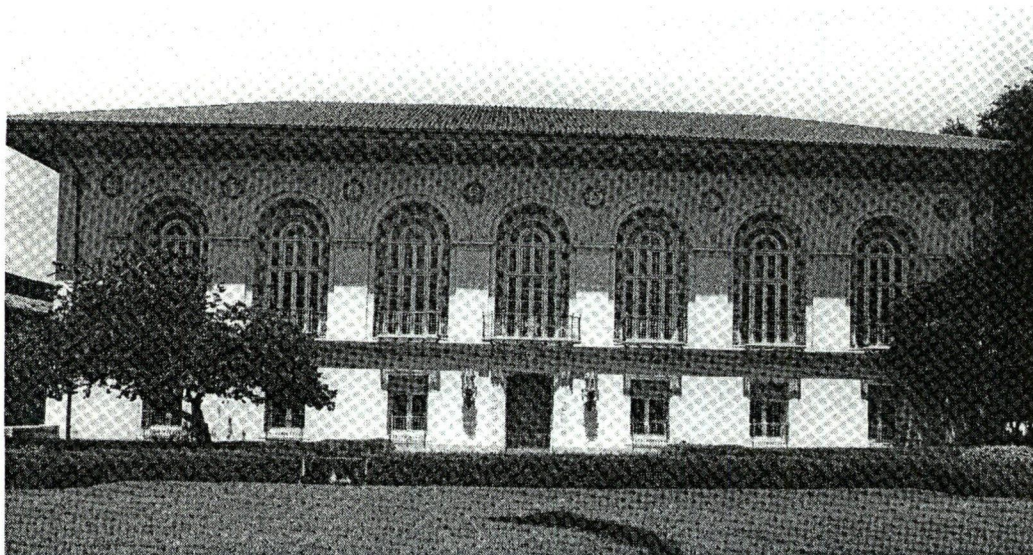


Figure 8 Battle Hall, University of Texas at Austin



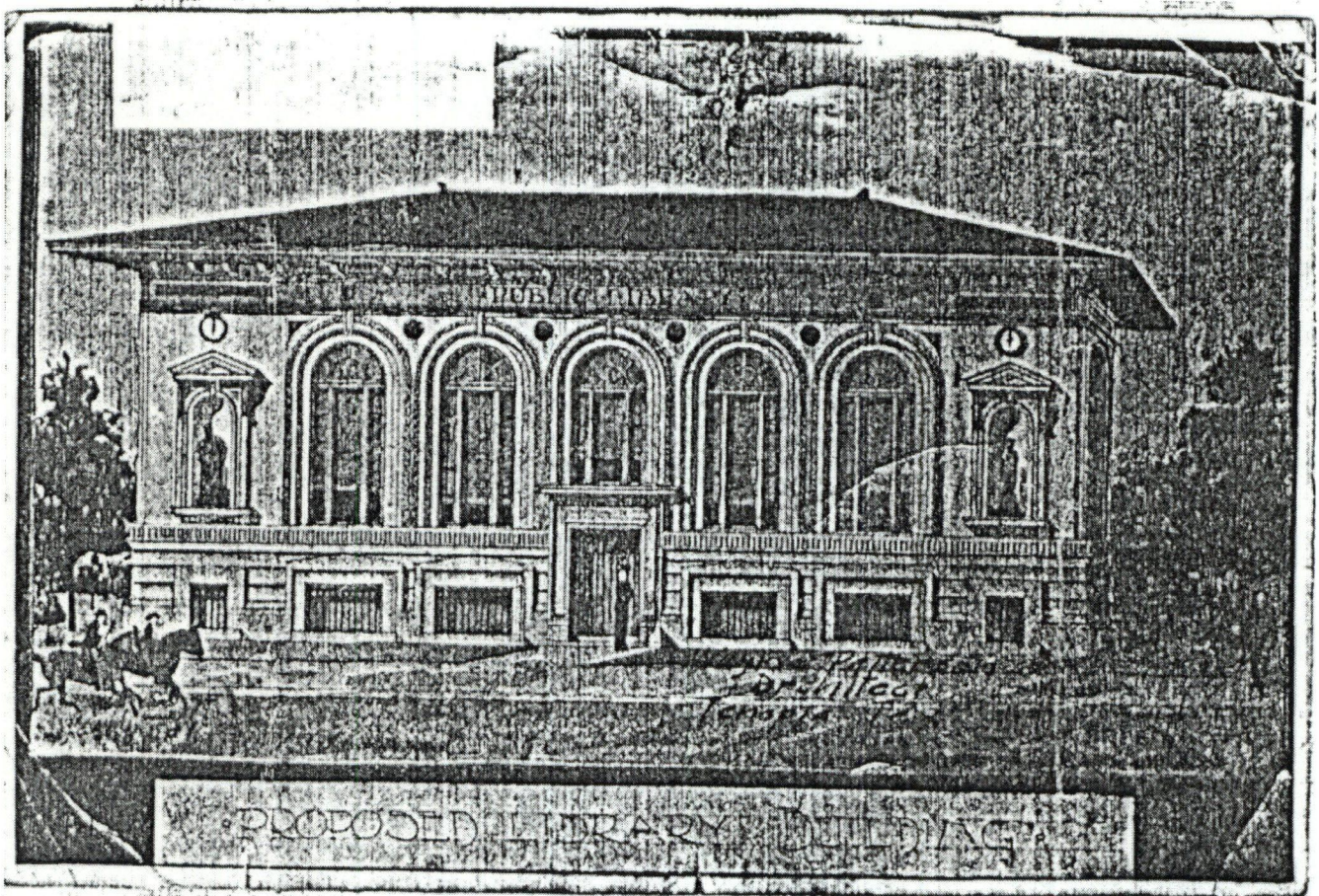
United States Department of the Interior
National Park Service

National Register of Historic Places
Continuation Sheet

Section FIGURES Page 20

Franklin Carnegie Library
Franklin, Robertson County, Texas

Figure 9 Proposed Library Building for Palestine drawn by Wayne Patterson,
from The Museum for East Texas Culture



United States Department of the Interior
National Park Service

National Register of Historic Places
Continuation Sheet

Section PHOTO Page 21

Franklin Carnegie Library
Franklin, Robertson County, Texas

Photo Log

Franklin Carnegie Library
315 East Dechard St
Franklin, Robertson County, TX

All Photographs by Crisi K Cooper, M. Arch
2 April 2005
Negatives on file with Friends of the Carnegie Library, Franklin, TX

1 of 14
South elevation, camera facing north

2 of 14
South elevation, camera facing northwest

3 of 14
East elevation, camera facing west

4 of 14
Northeast oblique, camera facing southwest

5 of 14
North elevation, camera facing south

6 of 14
Northwest oblique, camera facing southeast

7 of 14
West elevation, camera facing east

8 of 14
Southwest oblique, camera facing northeast

9 of 14
South elevation, entry detail

10 of 14
South elevation, keystone and overhand detail

United States Department of the Interior
National Park Service

National Register of Historic Places
Continuation Sheet

Section PHOTO Page 22

Franklin Carnegie Library
Franklin, Robertson County, Texas

11 of 14
South elevation, keystone and tile detail

12 of 14
South elevation, overhang and modillion bracket detail

13 of 14
North elevation, entry detail

14 of 14
North elevation, window detail

UNITED STATES DEPARTMENT OF THE INTERIOR
NATIONAL PARK SERVICE

NATIONAL REGISTER OF HISTORIC PLACES
EVALUATION/RETURN SHEET

REQUESTED ACTION: NOMINATION

PROPERTY NAME: Franklin Carnegie Library

MULTIPLE NAME:

STATE & COUNTY: TEXAS, Robertson

DATE RECEIVED: 10/11/05 DATE OF PENDING LIST: 11/09/05
DATE OF 16TH DAY: 11/24/05 DATE OF 45TH DAY: 11/24/05
DATE OF WEEKLY LIST:

REFERENCE NUMBER: 05001337

REASONS FOR REVIEW:

APPEAL: N DATA PROBLEM: N LANDSCAPE: N LESS THAN 50 YEARS: N
OTHER: N PDIL: N PERIOD: N PROGRAM UNAPPROVED: N
REQUEST: N SAMPLE: N SLR DRAFT: N NATIONAL: N

COMMENT WAIVER: N

ACCEPT RETURN REJECT 11-25-05 DATE

ABSTRACT/SUMMARY COMMENTS:

Entered in the
National Register

RECOM./CRITERIA _____

REVIEWER _____ DISCIPLINE _____

TELEPHONE _____ DATE _____

DOCUMENTATION see attached comments Y/N see attached SLR Y/N

If a nomination is returned to the nominating authority, the nomination is no longer under consideration by the NPS.



Carnegie Library
Franklin Tx
Photo #1



SPEED
LIMIT
45

CARNEGIE
LIBRARY
ESTABLISHED 1911

Carnegie library
Franklin TX
Photo #2



Carnegie library
Franklin TX
Photo #3



Carnegie Library
Franklin TX
Photo #4



Carnegie Library
Franklin TX.
Photo # 5



BRIDGE LIBRARY

WARNING

Carnegie Library
Franklin TX
Photo # 6



Carnegie library
Franklin TX
Photo #7



CARNEGIE HALL

CARNEGIE
LIBRARY

Carnegie Library
Franklin TX
Photo # 8



Carnegie library
Franklin Tx
Photo # 9



Carnegie Library
Franklin TX
Photo # 10



Carnegie Library
Franklin TX
Photo # 11



Carnegie Library
Franklin TX
Photo # 12.



CARMELO LIBRARY

315

OPEN

BOOK DROP

Carnegie Library
Franklin TX
Photo # 13



GARNE

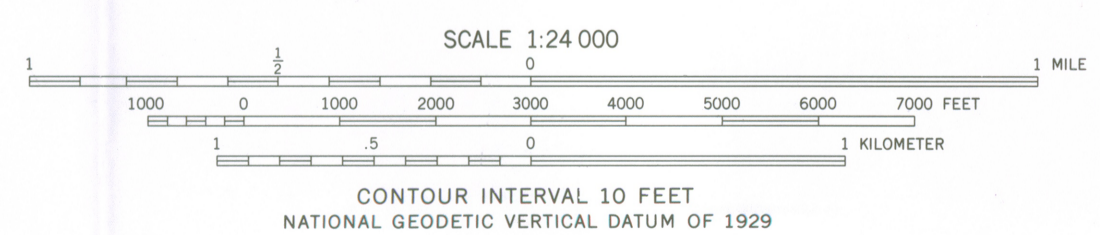
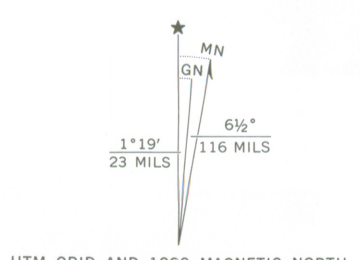
Carnegie Library
Franklin TX
Photo #14



Franklin Carnegie Library
Franklin, Robertson Co., TX
UTM REF: 14/740152 / 3435346

Mapped, edited, and published by the Geological Survey
Control by USGS and NOS/NOAA
Topography by photogrammetric methods from aerial
photographs taken 1964. Field checked 1965
Polyconic projection. 1927 North American Datum
10,000-foot grid based on Texas coordinate system,
central zone
1000-meter Universal Transverse Mercator grid ticks,
zone 14, shown in blue
Fine red dashed lines indicate selected fence lines

To place on the predicted North American Datum 1983
move the projection lines 16 meters south and
25 meters east as shown by dashed corner ticks



THIS MAP COMPLIES WITH NATIONAL MAP ACCURACY STANDARDS
FOR SALE BY U. S. GEOLOGICAL SURVEY, DENVER, COLORADO 80225, OR RESTON, VIRGINIA 22092
A FOLDER DESCRIBING TOPOGRAPHIC MAPS AND SYMBOLS IS AVAILABLE ON REQUEST



3196-122

ROAD CLASSIFICATION

Heavy-duty	Light-duty
Medium-duty	Unimproved dirt
U.S. Route	State Route

FRANKLIN, TEX.
N3100—W9622.5/7.5
1965
PHOTOREVISED 1982
DMA 6746 III SW—SERIES V882



TEXAS HISTORICAL COMMISSION

Rick Perry • *Governor*
John L. Nau, III • *Chairman*
F. Lawrence Oaks • *Executive Director*

The State Agency for Historic Preservation

TO: Janet Matthews, Keeper
National Register of Historic Places

FROM: Hannah Vaughan, Historian
Texas Historical Commission

RE: Franklin Carnegie Library, Robertson Co., TX

DATE: October 4, 2005

OCT 11 2005

The following materials are submitted regarding: The Franklin Carnegie Library

<input checked="" type="checkbox"/>	Original National Register of Historic Places form
<input type="checkbox"/>	Resubmitted nomination
<input type="checkbox"/>	Multiple Property nomination form
<input checked="" type="checkbox"/>	Photographs
<input checked="" type="checkbox"/>	USGS map
<input type="checkbox"/>	Correspondence
<input type="checkbox"/>	Other:

COMMENTS:

SHPO requests substantive review

The enclosed owner objections (do) (do not) constitute a majority of property owners

Other _____