

519

NATIONAL REGISTER OF HISTORIC PLACES
REGISTRATION FORM

1. NAME OF PROPERTY

HISTORIC NAME: Wrede School
OTHER NAME/SITE NUMBER: N/A

2. LOCATION

STREET & NUMBER: 3929 South SH 16
CITY OR TOWN: Fredericksburg
STATE: Texas CODE: TX COUNTY: Gillespie

NOT FOR PUBLICATION: N/A
VICINITY: X
CODE: 171 ZIP CODE: 78624

3. STATE/FEDERAL AGENCY CERTIFICATION

As the designated authority under the National Historic Preservation Act, as amended, I hereby certify that this (nomination) (request for determination of eligibility) meets the documentation standards for registering properties in the National Register of Historic Places and meets the procedural and professional requirements set forth in 36 CFR Part 60. In my opinion, the property (meets) (does not meet) the National Register criteria. I recommend that this property be considered significant (nationally) (statewide) (locally). (See continuation sheet for additional comments.)

Signature of certifying official

Date

State Historic Preservation Officer, Texas Historical Commission
State or Federal agency and bureau

In my opinion, the property meets does not meet the National Register criteria. (See continuation sheet for additional comments.)

Signature of commenting or other official

Date

State or Federal agency and bureau

4. NATIONAL PARK SERVICE CERTIFICATION

I hereby certify that this property is:

- entered in the National Register
See continuation sheet.
- determined eligible for the National Register
See continuation sheet
- determined not eligible for the National Register
- removed from the National Register
- other (explain): _____

for
Signature of the Keeper
Edson H. Beall

Date of Action

6/1/05

5. CLASSIFICATION

OWNERSHIP OF PROPERTY: Public - local

CATEGORY OF PROPERTY: Building

NUMBER OF RESOURCES WITHIN PROPERTY:	CONTRIBUTING	NONCONTRIBUTING
	3	0 BUILDINGS
	0	0 SITES
	1	0 STRUCTURES
	0	0 OBJECTS
	4	0 TOTAL

NUMBER OF CONTRIBUTING RESOURCES PREVIOUSLY LISTED IN THE NATIONAL REGISTER: 0

NAME OF RELATED MULTIPLE PROPERTY LISTING:

6. FUNCTION OR USE

HISTORIC FUNCTIONS: EDUCATION/school, school-related

CURRENT FUNCTIONS: SOCIAL/clubhouse

7. DESCRIPTION

ARCHITECTURAL CLASSIFICATION: N/A

MATERIALS: FOUNDATION STONE/Limestone; CONCRETE
WALLS WOOD
ROOF METAL/Tin
OTHER GLASS, WOOD

NARRATIVE DESCRIPTION (see continuation sheets 7-5 through 7-6).

United States Department of the Interior
National Park Service

National Register of Historic Places Continuation Sheet

Section 7 Page 5

Wrede School
Fredericksburg vicinity, Gillespie County, Texas

The Wrede School is just southwest of the city limits of Fredericksburg, the county seat of Gillespie County, Texas. The school complex consists of three buildings and one structure built between 1896 and 1940. The 3.40-acre school site is on the west side of State Highway 16, just east of the crossing of Live Oak Creek. The site includes a rectangular-plan frame schoolhouse, a square limestone outbuilding, two privies, a well and a cistern. The school grounds served as a center of social activity for a small settlement near Live Oak Creek southwest of the town of Fredericksburg. With relatively little alteration since the school was closed in 1960, the property presents an intact view of rural life from the late nineteenth and early twentieth century.

Setting

The Wrede School, located four miles southwest of the Gillespie County Courthouse, once marked a small settlement on Live Oak Creek, but is now just beyond the city limits of Fredericksburg. The county fairgrounds, airfield, and Lady Bird Johnson Park lie to the north, and the Wrede School is on a 3.4-acre tract bounded on the east by State Highway 16 and on the west by Live Oak Creek. A modern residence shares the driveway that provides access to the schoolhouse from SH 16.

The school complex consists of a rectangular plan frame schoolhouse, square plan limestone outbuilding, wooden framed privy, and well with metal hand pump. The surrounding land is a mixture of residential and commercial property, with the land closest to Live Oak Creek still open as floodplain. Three buildings (schoolhouse, outbuilding and privy) and one structure (well) are considered contributing resources in this nomination (see table of resources on continuation sheet 7-6).

Architectural description

The Wrede School is a small 18' x 32' wood frame building with traditional board and batten exterior walls, painted white. The south elevation is the primary façade. The schoolhouse is rectangular in plan with six screened double-hung 6/6 windows on the south elevation and three along the west wall. One wooden door opens onto the front porch, and two doors are in the north (rear) wall. The front porch, which extends the entire length of the front of the building, has a concrete floor and is 12 feet deep. This porch and another small wooden porch along the back have simple wooden support posts. The classroom and the front porch have a tin roof, while the back porch was covered with wooden shingles, now almost all missing.

The interior walls and ceiling are center match pine. Remaining in the building are eight original school desks, a pie safe which had housed the school library, two original blackboards, and one wood stove. The attic above the school room contains numerous small sawhorses and planks which were once used for benches for seating at school closing programs. Also found in the attic and of particular interest is a painted canvas stage curtain featuring advertisements from local merchants. This curtain was also used when school closing plays were staged on the front porch.

To the west of the school building is an eleven-foot square outbuilding of native rock construction with a corrugated sheet metal roof. An entry door is on the east elevation. Solid shutters cover window openings on the north and south elevations. A wood frame privy with a metal rood is at the northwest corner of the property.

United States Department of the Interior
National Park Service

National Register of Historic Places Continuation Sheet

Section 7 Page 6

Wrede School
Fredericksburg vicinity, Gillespie County, Texas

A rectangular concrete slab and a small square stone slab are between the school and outbuilding. A well directly northwest of the school is capped with a concrete slab and a metal sheathed hand pump which is still operational.

Changes since construction

The Wrede School complex reflects the continued use and expansion of the facilities through the historic period. The schoolhouse and outbuilding date from the turn of the century, while a privy and a well were in place by 1940. The property is virtually unchanged since the school was consolidated with Fredericksburg in 1960.

Even before the rural schools of Gillespie County closed as educational facilities, they were also serving as social gathering centers, polling places, and community clubs, often for several decades. As the schools closed the students and facilities were absorbed into the Fredericksburg Independent School District. In 1999 a concerted effort to document and preserve these properties was begun, with the establishment of Friends of Gillespie County Country Schools. In an effort to assume full stewardship of the historic buildings, a group of twelve community clubs that were leasing their meeting spaces from the Fredericksburg ISD sought to have the properties donated to them. But state law forbade school districts from donating such surplus property, even to non-profit groups and community associations. The Friends wrote legislation, sponsored by State Senator Jeff Wentworth and State Representative Harvey Hilderbran, to allow donation of these properties to a governmental or non-profit organization. The bills were passed in the Texas Legislature and ratified by voters as an amendment to the state constitution in November 2001. The Friends have received preservation awards from the Texas Historical Commission and Preservation Texas, and have also sponsored open houses and fundraisers to build support for the preservation of twelve of the rural schools of Gillespie County. The Friends are now completing nominations to list these twelve schools on the National Register of Historic Places.

Table of resources within property:

Wrede School	1896	BUILDING	contributing
Stone outbuilding	c. 1910	BUILDING	contributing
Well	c. 1940	STRUCTURE	contributing
Privy	c. 1940	BUILDING	contributing

8. STATEMENT OF SIGNIFICANCE

APPLICABLE NATIONAL REGISTER CRITERIA

- A** PROPERTY IS ASSOCIATED WITH EVENTS THAT HAVE MADE A SIGNIFICANT CONTRIBUTION TO THE BROAD PATTERNS OF OUR HISTORY.
- B** PROPERTY IS ASSOCIATED WITH THE LIVES OF PERSONS SIGNIFICANT IN OUR PAST.
- C** PROPERTY EMBODIES THE DISTINCTIVE CHARACTERISTICS OF A TYPE, PERIOD, OR METHOD OF CONSTRUCTION OR REPRESENTS THE WORK OF A MASTER, OR POSSESSES HIGH ARTISTIC VALUE, OR REPRESENTS A SIGNIFICANT AND DISTINGUISHABLE ENTITY WHOSE COMPONENTS LACK INDIVIDUAL DISTINCTION.
- D** PROPERTY HAS YIELDED, OR IS LIKELY TO YIELD, INFORMATION IMPORTANT IN PREHISTORY OR HISTORY.

CRITERIA CONSIDERATIONS: N/A

AREAS OF SIGNIFICANCE: EDUCATION

PERIOD OF SIGNIFICANCE: 1896-1955

SIGNIFICANT DATES: 1896

SIGNIFICANT PERSON: N/A

CULTURAL AFFILIATION: N/A

ARCHITECT/BUILDER: N/A

NARRATIVE STATEMENT OF SIGNIFICANCE (see continuation sheets 8-7 through 8-12).

9. MAJOR BIBLIOGRAPHIC REFERENCES

BIBLIOGRAPHY (see continuation sheets 9-13 through 9-17).

PREVIOUS DOCUMENTATION ON FILE (NPS): N/A

- preliminary determination of individual listing (36 CFR 67) has been requested.
- previously listed in the National Register
- previously determined eligible by the National Register
- designated a National Historic Landmark
- recorded by Historic American Buildings Survey #
- recorded by Historic American Engineering Record #

PRIMARY LOCATION OF ADDITIONAL DATA:

- State historic preservation office (*Texas Historical Commission*)
- Other state agency (*Texas Education Agency*)
- Federal agency
- Local government (*Gillespie County Courthouse, Fredericksburg, Texas*)
- University
- Other -- Specify Repository (*German-Texan Heritage Society, Austin, Texas*)

United States Department of the Interior
National Park Service

National Register of Historic Places Continuation Sheet

Section 8 Page 7

Wrede School
Fredericksburg vicinity, Gillespie County, Texas

The Wrede School complex in Gillespie County, Texas is nominated for listing in the National Register of Historic Places under Criterion A in the area of Education at the local level of significance. The property has undergone little alteration since the historic period, and is able to convey its significance as a place where the process of conveying and acquiring knowledge and skills through systematic instruction, training and study was undertaken. The property retains integrity of location, design, setting, materials, workmanship, feeling and association to a high degree.

Education in Gillespie County

German immigrants set the standard for education after Texas achieved statehood in 1845. Historian and educator Frederick Eby asserted that the German settlements had a spirit of intellectual development and social improvement:

By far the most progressive measures for the promotion of schools were adopted by the German communities of south central Texas. As early as 1845 a colony of Germans settled in New Braunfels. After the Prussian Revolution in 1848 large numbers emigrated for political reasons and located upon the fertile lands of the south central portion of the state. Among them were many of superior intelligence and training; they brought with them the customs, love of learning, and idealism of the older Germany of Kant, Fichte, and Schiller. Many of them had left the Fatherland to secure a larger measure of political and religious freedom. They had been educated in schools which from the lowest to the highest were maintained and supported by the state and were free to all children. They naturally desired similar advantages for their children here in Texas.¹

The German immigrants who settled Gillespie County carried with them a keen interest in education, and as a result educational institutions and facilities around Fredericksburg tended to be of higher quality than typical rural schools in Texas. The first school was established in the *Marketplatz* (Market Square) at the center of Fredericksburg. The *Vereins Kirche* (Community Church) was an octagonal-shaped structure built in 1847 as a combination church, school, fort, and storehouse. Tuition at the school began at one dollar per pupil per quarter, and the *Vereins Kirche* could hold about seventy pupils. The earliest teachers, including Johann Leyendecker, Jacob Brodbeck, Reverend Burchard Dangers, and Heinrich Ochs, were also noted writers, scientists, and men of letters. August Siemering was secretary for an intellectual community established at Sisterdale, 25 miles southeast of Fredericksburg.²

In 1854, the Texas Legislature established a public school system for the first time, encouraging counties to create public school districts to bring educational opportunities to more citizens. Out of one hundred counties, only a handful organized a public school system. Gillespie County created five school districts that year to cover the entire county population. The state provided some financial support, including a steady income for teachers who taught English, an improvement for teachers over the uncertain tuition-supported system. The

¹ Eby 130.

² Mohon and Mohon, 125-126.

United States Department of the Interior
National Park Service

National Register of Historic Places Continuation Sheet

Section 8 Page 8

Fredericksburg vicinity, Gillespie County, Texas

Wrede School

first public schools in Gillespie County opened that year, as well as the first parochial school through St. Mary's Catholic Church.³

The Civil War disrupted educational efforts, but following the war there was an increase in the establishment of rural schools. Rural schools were organized through the county commissioners court, and a superintendent of education oversaw the educational program within the county. The superintendent had jurisdiction over all the schools in the county except the independent school districts, which were organized starting in the 1880s. Many rural schools were built on donated land centrally located in dispersed agricultural communities, with many children walking or riding horses several miles to school. Rural schools operated through an ad valorem property tax, providing income for the teachers and perhaps a small maintenance budget for the school building and grounds. The school year was often scheduled around the fall harvest, and many students' attendance was irregular when their help was needed at home. Some children received the majority of their schooling at home. One writer recalled the he was "more than fifteen years old before I ever attended school. My mother had given us all the help she could, and we had applied ourselves to studying such books as we had."⁴

Many of the Gillespie County schools offered courses both in German and English to cater to the predominantly German-speaking settlers. The end of the school year was often celebrated with an all-day affair called the *Schulpruefung* (school examination). The students demonstrated their knowledge of subjects through oral exams, and often when the testing was complete a picnic was held, with barbecue, beer and dancing for the families of the students. The *Schulpruefung* tradition continued through the nineteenth and early twentieth centuries.⁵

From 1876 to 1884 the German Methodist Church in Fredericksburg operated Fredericksburg College as a way to supplement the educational opportunities of area students. The school was one of four in the state to receive aid from the Peabody Fund, established by George Peabody to assist the former Confederate states in establishing free public schools.⁶ The building converted to a public school in Fredericksburg, and is still used today on the Fredericksburg Independent School District middle school campus.

The African-American population in Gillespie County was never very high historically, and none of the rural schools had separate facilities for African-American students. In the late 1860s children of the Washingtons, who were freed slaves, attended Meusebach Creek School with Anglo children, probably one of the first cases of an integrated school in the South.⁷ Records from 1871 report eighteen African-American students at a school in Fredericksburg. In 1937 the Fredericksburg Independent School District was the only district in Gillespie County with separate facilities for African-Americans, with seven students reported that year out of a

³ Mohon and Mohon, 126.

⁴ Biggers 85.

⁵ Mohon and Mohon, 127-128.

⁶ Gold 28.

⁷ Mohon and Mohon, 133.

United States Department of the Interior
National Park Service

National Register of Historic Places Continuation Sheet

Section 8 Page 9

Fredericksburg vicinity, Gillespie County, Texas

Wrede School

countywide total of 2,862.⁸ The African-American school in Fredericksburg was moved from its original site to 107 E. Schubert Street.

Rural school districts proliferated in Gillespie County in the late nineteenth and early twentieth centuries, reaching a peak of 42 districts at one point. In 1937, thirty of forty-one rural school districts were served by a single teacher, while eight districts had two teachers, two had three each, and one rural district, Stonewall, had four teachers for its average daily attendance of 86 students. Average daily attendances (A.D.A.) at the other rural schools ranged from six at Flat Rock to 65 at Morris Ranch.⁹ Today Gillespie County is served by four school districts. Fredericksburg Independent School District serves the largest area and offers courses in grades one through twelve. Harper, west of Fredericksburg, also teaches twelve grades. Doss schools, in the northwest part of the county, teach grades one through eight, and Stonewall in the east part of the county offers classes through fifth grade.¹⁰

The Gilmer-Aikin Law of 1949 resulted in the consolidation of most rural schools in Texas. But in Gillespie County, a stronger sense of rural community prevailed, and a dozen of the rural schools operated well beyond the mandated consolidation into the 1950s and 1960s. Stonewall and Rocky Hill schools held off consolidation with Fredericksburg until the 1970s. Many of the rural schools in Gillespie County were already serving multiple purposes as community centers and as hubs of social activity when they ceased to operate as educational centers. As a result, Gillespie County has perhaps the most intact collection of rural schoolhouses remaining in Texas. With few exceptions, the schoolhouses and ancillary buildings and structures retain a high degree of integrity of location, design, setting, materials, workmanship, feeling and association. The White Oak School was moved to the Pioneer Museum Complex in downtown Fredericksburg in 1990. The 1905 schoolhouse at Doss now serves as the local fire station. A few of the former schools, such as at Nebo (Eckert), have been converted to residences. The Petersburg and Squaw Creek schools are used as hay barns. Out of more than forty historic schools, only the main buildings at Hayden and Palo Alto have been demolished, but even at the latter site the barbecue pit remains standing.¹¹ Other school buildings that remain still operate as community centers, reunion halls, festival headquarters, and voting places.

The table "Gillespie County School Districts" on page 8-11 includes the rural district number, name, years established and consolidated, average daily attendance in 1937 (A.D.A.), and historical designations for each of 42 rural school districts and two independent school districts in Gillespie County. Abbreviations for historical designations are OTHM (Official Texas Historical Marker), RTHL (Recorded Texas Historic Landmark), NRHP (National Register of Historic Places), and NHL (National Historic Landmark, for the Junction School at Lyndon B. Johnson National Historic Park).

⁸ Texas Statewide School Adequacy Survey, 659-670.

⁹ Texas Statewide School Adequacy Survey, 659-670. See also table on page 8-11.

¹⁰ Mohon and Mohon, 130, "Lower South Grape Creek."

¹¹ Gillespie County School Histories.

United States Department of the Interior
National Park Service

National Register of Historic Places Continuation Sheet

Section 8 Page 10Wrede School
Fredericksburg vicinity, Gillespie County, Texas

Gillespie County School Districts

No.	Name	Established	Consolidated	A.D.A.	Consolidated with	Historical designations
1	Big Flat (Tasca)		1939	15	Willow City	
2	Live Oak	1854	1949	25	Fredericksburg	
3	Luckenbach	1855	1964	29	Fredericksburg	RTHL 1982
4	Cave Creek	1870	1950	28	Fredericksburg	
5	Rocky Hill	1885	1977	39	Fredericksburg	
6	Palo Alto	1870	1946	48		
7	Pilot Knob	1880	1963	40	Fredericksburg	
8	Grape Hill	1885	before 1937	--	Luckenbach	
9	Squaw Creek	1867	1954	12	Doss	
10	Crabapple	1877	1957	33	Fredericksburg	OTHM 1994
11	Meusebach Creek	1858	1951	47	Fredericksburg	
12	Pedernales	1867	1945	10		OTHM 1993
13	Young's Chapel	before 1889		11		
14	Grapetown	1859	1949	25	Rocky Hill	RTHL 1984
15	Junction	1881	1947	30	Stonewall	NHL
16	Cherry Spring	1859	1962	22	Fredericksburg	OTHM 1985 RTHL 1988
17	Honey Creek	before 1889	1942	7	Fredericksburg	
18	Stonewall	1860	1970	86	Fredericksburg	
19	Hayden	before 1904	1942	18	Morris Ranch	
20	Wrede	1871	1960	14	Fredericksburg	
21	Lower South Grape Creek	1871	1960	25	Fredericksburg	RTHL 1994
22	Rheingold	1873	1949	33	Fredericksburg	
23	Knopp	before 1889	1947	49	Fredericksburg	
24	Doss	1884	--	44	--	OTHM 1985
25	Tivydale	1880	1950	21	Harper	
26	Wolf Creek	1899	1946	15	Morris Ranch	
27	Cherry Mountain	1883	1949	11	Fredericksburg	RTHL 1992
28	Onion Creek	1881	1947	9	Doss	
29	Pecan Creek	1889	1955	25	Fredericksburg	
30	Nebo (Eckert)	1889	1950	36	Willow City	
31	Bear Creek	1889	1949	13	Wrede	
32	Klein Branch	1884		22		
33	Nebgen	1881	1949	14	Stonewall	
34	Pocket		1940	10	Harper	
35	Flat Rock	1889	1937	6	Harper	
36	Klein Frankreich	1900	1949	12	Fredericksburg	
37	White Oak	1892	1950	20	Morris Ranch	
38	Williams Creek (Albert)	1890	1950	31	Stonewall	RTHL 2002
39	Petersburg	1890	1951	16		
40	Morris Ranch	1890	1962	65	Fredericksburg	NRHP 1983 RTHL 1980
41	Willow City	1876	1961	35	Fredericksburg	
42	Cain City	1915	1949	19	Rocky Hill	
	Fredericksburg ISD	1847	--	601	--	
	Harper ISD	1884	--	139	--	

United States Department of the Interior
National Park Service

National Register of Historic Places Continuation Sheet

Section 8 Page 11

Wrede School
Fredericksburg vicinity, Gillespie County, Texas

Wrede School

The Wrede School is important as an example of a small nineteenth century rural school that retains much of its original appearance as well as some original furnishings. It serves to remind us of the high value placed on education by the settlers of the region. It also has a history of being a social center and community facility as well as a schoolhouse.

The location on Live Oak Creek was the first site of Carl Hilmar Guenther's mill in Texas. Guenther (1828-1902) completed his apprenticeship as a master millwright in Germany and immigrated to the United States in 1848. In search of opportunities and a good grist mill site, he journeyed south from Wisconsin to New Orleans, and then west to Texas. He bought land and water rights on Live Oak Creek in 1851. After six months of construction his mill was operational, but a flood destroyed the first dam. One month after the flood the mill was working again. Ox-drawn wagons loaded with harvested crops converged on the mill in the mornings, and after the farmers' business was completed the men remained to visit with one another. The mill became a center of social life. Guenther was granted American citizenship in Gillespie County in 1854, and he married Dorothea Pape the following year. They lived in a home near the mill and were eventually the parents of seven children. In 1859 Guenther chose a site about one mile from the center of San Antonio as a new site for his mill operation. Guenther Mills soon became the Pioneer Flour Mills, an enterprise which became a flourishing business in Texas and the Southwest.¹²

Wrede School is named for Frederick von Wrede, a previous owner of the property on which the school was built, and a Gillespie County Clerk in the 1850s. The history of education at this site dates from at least the 1860s. In 1867 G. H. Gombert of Live Oak Creek was issued one of the first teaching certificates by the Gillespie County Commissioners Court. In the early years teachers often gave lessons in private homes before a permanent schoolhouse was built. In 1871 Franz and Barbara Becker sold a five-acre tract to trustees of the "School District...on Live Oak Creek." The school has always been at the same location.

The present school building was erected in 1896, and a hand-dug well provided water. The lumber was hauled from Comfort (23 miles south) by wagon. Classes met in this building for the first time on October 15, 1896. However, it is possible that there was a school that predated the official establishment of Wrede School District No. 20 by the Gillespie County Commissioners' Court, for the warranty deed filed in 1890 for the 1871 conveyance of the land refers to a "Company house or present school house." Also unknown are the names of teachers before 1902. The salary for a teacher in 1896 was \$28 per month.

In about 1908 the youngest Guenther son returned to the site of his father's mill near the Wrede School and the teacher, Ernest Schmidt, let his students watch as Guenther sawed off a piece of cypress from the old water wheel. While Schmidt was teaching at Wrede, he and his wife lived on the premises. Schmidt made flower beds with rocks in the form of a five-pointed star and had the children plant flowers in the beds. A frame teacher's residence, or teacherage, was constructed in 1909, but was removed in the 1970s.

¹² "Guenther's Live Oak Mill."

United States Department of the Interior
National Park Service

National Register of Historic Places Continuation Sheet

Section 8 Page 12

Wrede School
Fredericksburg vicinity, Gillespie County, Texas

According to Gillespie County School Board minutes beginning in 1902, student population ranged from 14 to 48 students. The school generally had one teacher, but two teachers were employed in 1916-17 and again from 1949 until the school closed eleven years later. Students from Bear Creek, Meusebach Creek, and Pedernales School went to Wrede School after consolidation in 1949. The teacherage was converted into a classroom to handle the increased attendance. During the 1950s the enrollment peaked at 53 students.

Wrede School District No. 20 was annexed to Fredericksburg Independent School District on June 11, 1960. During the decades after the closing of the school, the Wrede Home Demonstration Club, the Wrede Community Club, and the Wrede 4-H Club used the building. However, the lack of adequate heating and cooling as well as poor restroom facilities prompted these groups to move their meeting sites to other locations. The schoolhouse was used as an election site by Gillespie County and as a storage building by the Fredericksburg Independent School District.

Conclusion

Rural schools were the primary educational institutions for the majority of Texans in the late nineteenth and early twentieth centuries. These facilities provided the highest level of schooling for many individuals, and as training and education centers for those who went on to high school or college in larger cities. Rural schools also served as social centers for smaller communities. The school buildings were most often vernacular, with no discernible architectural style, and built from local materials with log, frame, or stone construction. Through the process of school consolidation, the majority of these rural school buildings were vacated and subsequently demolished. In Gillespie County, the tradition of community activity continued in these rural buildings, preserving many of the structures that otherwise would have been lost. In addition, the tradition of rural education was continued in Gillespie County for a longer period than elsewhere in the state. As a result, Gillespie County has one of the most intact concentrations of rural schools in Texas.

The Wrede School complex comprises an intact rural landscape from the late nineteenth and early twentieth century. Built largely of local materials in vernacular style, the buildings convey a sense of their time and place as a good example of the early days of education in the state. The resources are nearly unaltered since the school was active from 1896-1960, and much of the original historic material remains intact. The facility continues to serve as a social gathering place for the community. The Wrede School complex meets Criterion A, in the area of Education, for its role in the process of conveying and acquiring knowledge and skills through systematic instruction, training and study. The property retains integrity of materials, workmanship, design, location, setting, association and feeling to a high degree.

United States Department of the Interior
National Park Service

National Register of Historic Places Continuation Sheet

Section 9 Page 13

Wrede School
Fredericksburg vicinity, Gillespie County, Texas

BIBLIOGRAPHY

- Benjamin, Gilbert Giddings. The Germans in Texas: A Study in Immigration. Austin: Jenkins Publishing Company, 1974 reprint (1910).
- "Bierschwale, Heinrich House." Recorded Texas Historic Landmark file, 1987. Texas Historical Commission files.
- Biesele, Rudolph Leopold. The History of the German Settlements in Texas 1831-1861. Austin: Eakin Press, 1987 reprint (1930).
- Biggers, Don H. German Pioneers in Texas. Austin: Eakin Publications, 1983 reprint (1925).
- Blanton, Annie Webb. "The Child of the Texas One-Teacher School." Austin: University of Texas Bulletin 3613 (1936).
- Blanton, Annie Webb. "A Handbook of Instruction As To Education in Texas: Scholastic Years, 1918-1922." Austin: Department of Education Bulletin 157 (January 1923).
- Bludworth, G. T. "History of Education in Texas," *Texas School Journal*, 26 (May 1909).
- Bracht, Viktor. Texas in 1848. Translated from the German by Charles Frank Schmidt, introduction by Theodore G. Gish. Manchaca, Texas: German-Texan Heritage Society, 1991.
- "Cave Creek." Article in The New Handbook of Texas. Austin: Texas State Historical Association, 1996.
- "Cherry Mountain School Complex." Recorded Texas Historic Landmark file, 1988. Texas Historical Commission files.
- "Cherry Spring Creek." Article in The New Handbook of Texas. Austin: Texas State Historical Association, 1996.
- "Cherry Spring Schoolhouse." Recorded Texas Historic Landmark file, 1988. Texas Historical Commission files.
- "Cherry Spring, Texas." Article by Martin Donnell Kohout in The New Handbook of Texas. Austin: Texas State Historical Association, 1996.

United States Department of the Interior
National Park Service

National Register of Historic Places Continuation Sheet

Section 9 Page 14

Wrede School
Fredericksburg vicinity, Gillespie County, Texas

BIBLIOGRAPHY (continued)

- Clegg, Luther Bryan. The Empty Schoolhouse: Memories of One-Room Texas Schools. College Station: Texas A&M University Press, 1997.
- "Crabapple Creek." Article in The New Handbook of Texas. Austin: Texas State Historical Association, 1996.
- "Crabapple School." Official Texas Historical Marker file, 1994. Texas Historical Commission files.
- "Crabapple, Texas." Article by Martin Donnell Kohout in The New Handbook of Texas. Austin: Texas State Historical Association, 1996.
- "Doss School." Official Texas Historical Marker file, 1985. Texas Historical Commission files.
- Eby, Frederick. Education in Texas: Source Materials. Austin: University of Texas Bulletin, No. 1824 (April 25, 1918).
- Eby, Frederick. The Development of Education in Texas. New York: 1925.
- Evans, Cecil E. The Story of Texas Schools. Austin: 1955.
- "Fredericksburg College." Article by Clinton P. Hartmann in The New Handbook of Texas. Austin: Texas State Historical Association, 1996.
- "Fredericksburg College Building." Recorded Texas Historical Landmark file, 1971. Texas Historical Commission files.
- "Fredericksburg, Texas." Article by Martin Donnell Kohout in The New Handbook of Texas. Austin: Texas State Historical Association, 1996.
- "Gillespie County." Article by Martin Donnell Kohout in The New Handbook of Texas. Austin: Texas State Historical Association, 1996.
- Gillespie County Historical Society. Pioneers in God's Hills. Austin: Von Boeckmann-Jones, two volumes, 1960, 1974.
- Gillespie County Program Building Committee. Gillespie County School Histories. Fredericksburg: Dietel and Son Printing, 1983.

United States Department of the Interior
National Park Service

National Register of Historic Places
Continuation Sheet

Section 9 Page 15

Wrede School
Fredericksburg vicinity, Gillespie County, Texas

BIBLIOGRAPHY (continued)

- Gold, Ella Amanda. "The History of Education in Gillespie County." M. A. thesis, University of Texas, 1945.
- "Gold, Texas." Article by Martin Donnell Kohout in The New Handbook of Texas. Austin: Texas State Historical Association, 1996.
- Graham, Bess Althaus. A Photographic Survey of Rural Gillespie County. Austin: Texas Historic Resources Fellowship Project, 1988. On file at Texas Historical Commission.
- "Grapetown School." Recorded Texas Historic Landmark file, 1984. Texas Historical Commission files.
- Holloway, William J. "The Contributions of the Ex Officio and State Superintendent of Public Instruction to the Development of the Public School System in Texas from 1836 to 1884." M. A. thesis, University of Texas, 1929.
- Jordan, Gilbert J. Yesterday in the Texas Hill Country. College Station: Texas A&M University Press, 1979.
- "Little Rock House." Recorded Texas Historic Landmark file, 1965. Texas Historical Commission files.
- "Lower South Grape Creek School." Recorded Texas Historic Landmark file, 1994. Texas Historical Commission files.
- "Luckenbach School." Recorded Texas Historic Landmark file, 1982. Texas Historical Commission files.
- "Luckenbach, Texas." Article by Glen E. Lich in The New Handbook of Texas. Austin: Texas State Historical Association, 1996.
- "Market Square (Marketplatz)." Official Texas Historical Marker file, 1992. Texas Historical Commission files.
- McAlister, Samuel Bertram. Government and Law of the Texas Public School System. College Station: The Education Publishing Company, 1935.
- "Meusebach Creek." Article in The New Handbook of Texas. Austin: Texas State Historical Association, 1996.
- Mohon, Monty and Michelle Mohon. Gillespie County: A View of Its Past. Virginia Beach VA: The Donning Company Publishers, 1996.

United States Department of the Interior
National Park Service

National Register of Historic Places Continuation Sheet

Section 9 Page 16

Wrede School
Fredericksburg vicinity, Gillespie County, Texas

BIBLIOGRAPHY (continued)

- "Morris Ranch Schoolhouse." National Register of Historic Places file, 1985. Texas Historical Commission files.
- "Morris Ranch Schoolhouse." Recorded Texas Historic Landmark file, 1980. Texas Historical Commission files.
- "Old Cherry Spring School (Das Alte Schulhaus)." Official Texas Historical Marker file, 1985. Texas Historical Commission files.
- "Pedernales Rural School." Official Texas Historical Marker file, 1993. Texas Historical Commission files.
- Rogers, E. E. "The History of Legislation Relating to the Public Schools of Texas, 1845-1930." M. A. Thesis, Southern Methodist University, 1930.
- Rowold, Milam C. "The Texas Rural Schools Revisited." Ph. D. dissertation, University of Texas at Austin, 1983.
- Schmidt, Curt E. Oma & Opa: German-Texan Pioneers. New Braunfels, Texas: Folkways Publishing Company, 1975.
- Sitton, Thad and Milam C. Rowold. Ringling the Children In: Texas Country Schools. College Station: Texas A&M University Press, 1987.
- "South Grape Creek." Article in The New Handbook of Texas. Austin: Texas State Historical Association, 1996.
- Struve, Walter. Germans & Texans: Commerce, Migration, and Culture in the Days of the Lone Star Republic. Austin: University of Texas Press, 1996.
- Texas Public Schools: Centennial Handbook 1854-1954. Austin: Texas Education Agency, 1954.
- Texas Statewide School Adequacy Survey. L. D. Stokes, State Board of Education, Technical Director. Austin: Texas State Board of Education, 1937.
- "Vereins Kirche." Recorded Texas Historic Landmark file, 1967. Texas Historical Commission files.

United States Department of the Interior
National Park Service

National Register of Historic Places Continuation Sheet

Section 9 Page 17

Wrede School
Fredericksburg vicinity, Gillespie County, Texas

BIBLIOGRAPHY (continued)

- Weinheimer, Ophelia Nielsen. "The Early History of Gillespie County, Texas." M. A. thesis, Southwest Texas State Teachers College, 1952.
- White, Anna Louise. "The Teacher in Texas: 1836-1879." M. A. thesis, Baylor University, 1972.
- White, Lee Wayne. "Popular Education and the State Superintendent of Public Instruction in Texas, 1860-1899." Ph. D. dissertation, The University of Texas at Austin, 1974.
- White, Michael Allen. "History of Education in Texas, 1860-1884." Ph. D. dissertation, Baylor University, 1969.
- "Williams Creek School." Recorded Texas Historic Landmark file, 2002. Texas Historical Commission files.
- "Willow Creek." Article in The New Handbook of Texas. Austin: Texas State Historical Association, 1996.
- "Willow City, Texas." Article by Martin Donnell Kohout in The New Handbook of Texas. Austin: Texas State Historical Association, 1996.

10. GEOGRAPHICAL DATA

ACREAGE OF PROPERTY: 3.40 acres

UTM REFERENCES	Zone	Easting	Northing
	14	508720	3344400

VERBAL BOUNDARY DESCRIPTION: Legal parcel number Property ID R83751, A0572 G. Rodriguez #46, 3.40 acres in Gillespie County, Texas.

BOUNDARY JUSTIFICATION: The boundary includes all property historically associated with the resource.

11. FORM PREPARED BY (with assistance from Bob Brinkman, Texas Historical Commission)

NAME/TITLE: Ronni Pue

ORGANIZATION: Save Rural Texas Schools

DATE: December 10, 2004

STREET & NUMBER: P.O. Box 413

TELEPHONE: (830) 997-8655

CITY OR TOWN: Fredericksburg

STATE: Texas

ZIP CODE: 78624

ADDITIONAL DOCUMENTATION

CONTINUATION SHEETS

MAPS (see continuation sheet MAP-18 and topographic map)

PHOTOGRAPHS (see continuation sheet PHOTO-19)

ADDITIONAL ITEMS

PROPERTY OWNER

NAME: Gillespie County, ATTN: The Hon. Mark Stroehrer

STREET & NUMBER: 101 West Main

TELEPHONE: (830) 997-7502

CITY OR TOWN: Fredericksburg

STATE: Texas

ZIP CODE: 78624

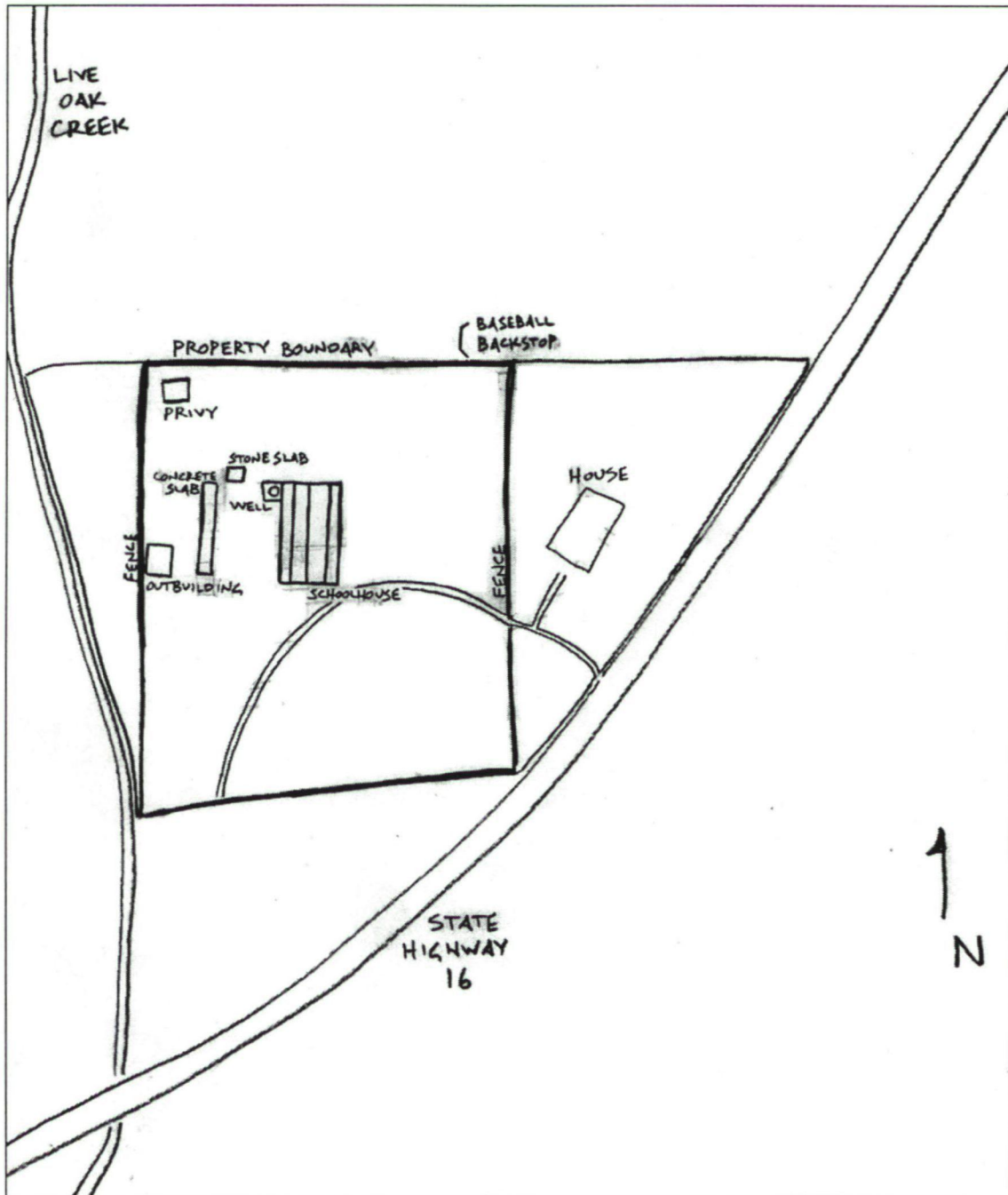
United States Department of the Interior
National Park Service

National Register of Historic Places Continuation Sheet

Section MAP Page 18

Wrede School
Fredericksburg vicinity, Gillespie County, Texas

Site plan of Wrede School, north at top. Not to scale.



United States Department of the Interior
National Park Service

National Register of Historic Places Continuation Sheet

Section PHOTO Page 19

Wrede School
Fredericksburg vicinity, Gillespie County, Texas

PHOTOGRAPHIC INVENTORY

Wrede School
3828 South SH 16
Fredericksburg vicinity, Gillespie County, Texas
Photographs by Bob Brinkman, March 2005.
Negatives on file at Texas Historical Commission.

Photograph 1 of 4
Wrede School, southeast oblique
Camera facing northwest

Photograph 2 of 4
Wrede School, east elevation
Camera facing west

Photograph 3 of 4
Wrede School outbuilding, southeast oblique
Camera facing northwest

Photograph 4 of 4
Wrede School privy, southeast oblique
Camera facing northwest

UNITED STATES DEPARTMENT OF THE INTERIOR
NATIONAL PARK SERVICE

NATIONAL REGISTER OF HISTORIC PLACES
EVALUATION/RETURN SHEET

REQUESTED ACTION: NOMINATION

PROPERTY Wrede School
NAME:

MULTIPLE
NAME:

STATE & COUNTY: TEXAS, Gillespie

DATE RECEIVED: 4/18/05 DATE OF PENDING LIST: 5/17/05
DATE OF 16TH DAY: 6/01/05 DATE OF 45TH DAY: 6/01/05
DATE OF WEEKLY LIST:

REFERENCE NUMBER: 05000519

REASONS FOR REVIEW:

APPEAL: N DATA PROBLEM: N LANDSCAPE: N LESS THAN 50 YEARS: N
OTHER: N PDIL: N PERIOD: N PROGRAM UNAPPROVED: N
REQUEST: N SAMPLE: N SLR DRAFT: N NATIONAL: N

COMMENT WAIVER: N

ACCEPT RETURN REJECT 6/1/05 DATE

ABSTRACT/SUMMARY COMMENTS:

Entered in the
National Register

RECOM./CRITERIA _____

REVIEWER _____ DISCIPLINE _____

TELEPHONE _____ DATE _____

DOCUMENTATION see attached comments Y/N see attached SLR Y/N

If a nomination is returned to the nominating authority, the nomination is no longer under consideration by the NPS.



WREDE SCHOOL
3929 SOUTH SH 16
FREDERICKSBURG VICINITY,
GILLESPIE COUNTY, TEXAS
PHOTO 1 OF 4



WREDE SCHOOL

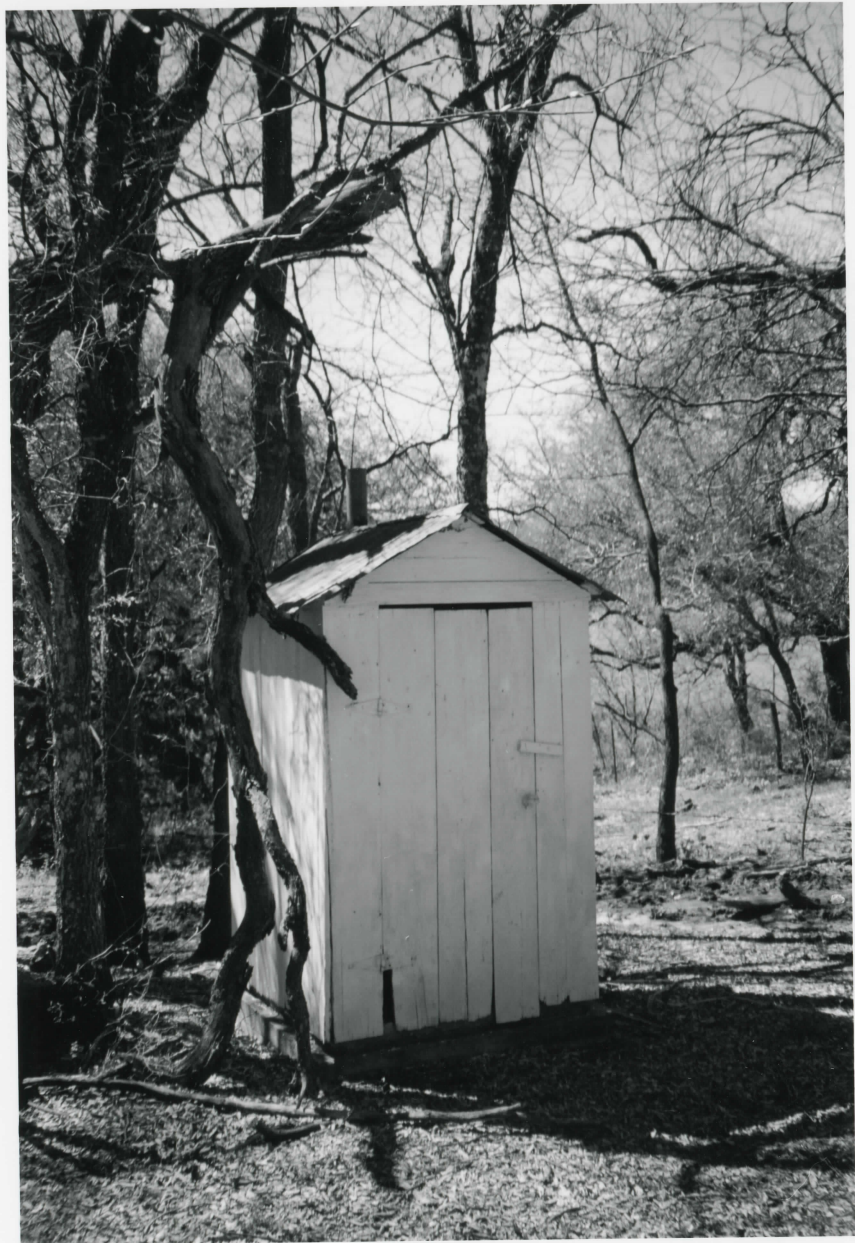
3929 SOUTH SH 16

FREDERICKSBURG, VICINITY, GILLESPIE COUNTY, TEXAS

PHOTO 2 OF 4



WREDE SCHOOL
3929 SOUTH SH 16
FREDERICKSBURG, VICINITY, GILLESPIE COUNTY, TEXAS
PHOTO 3 OF 4

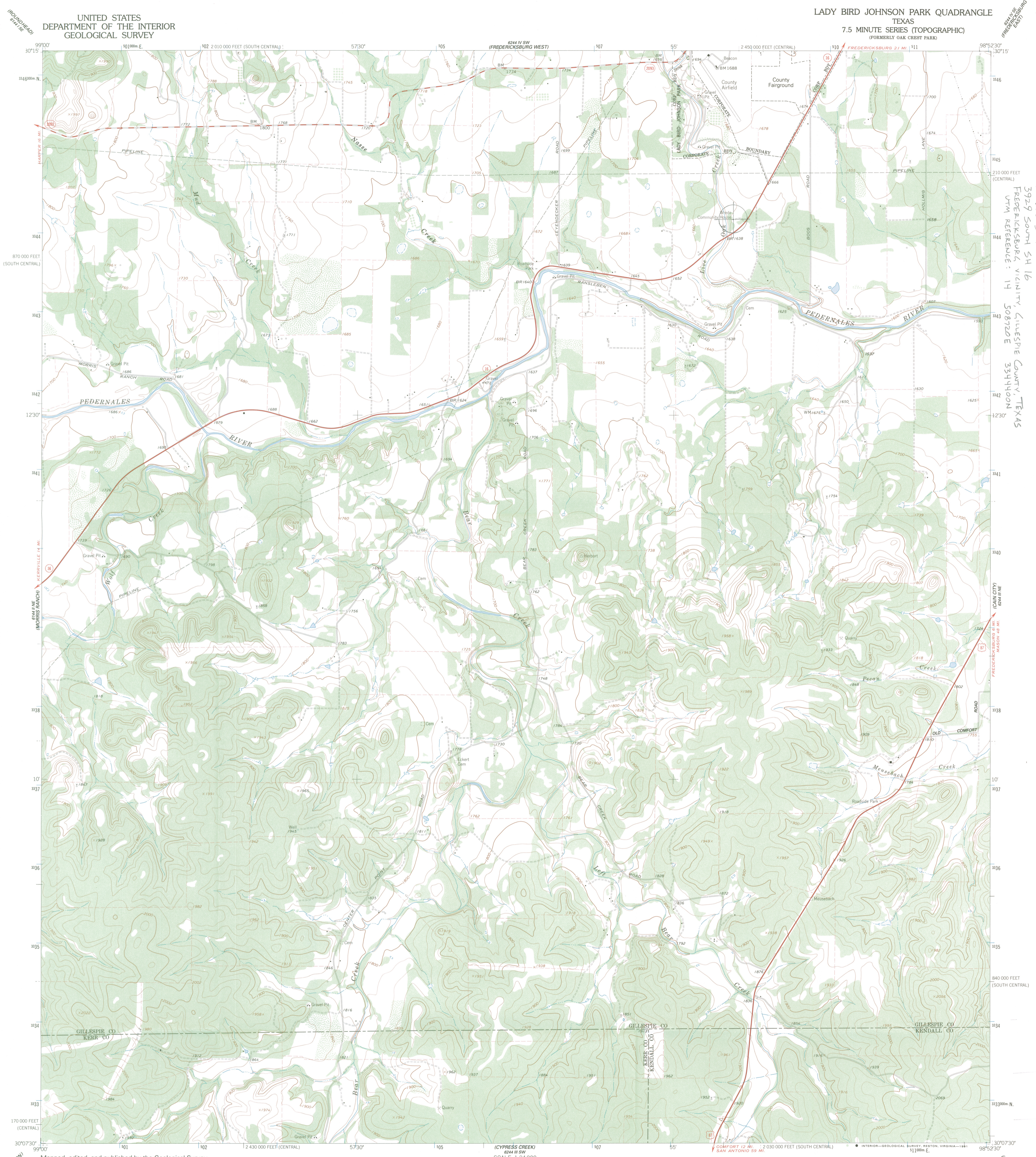


WREDE SCHOOL

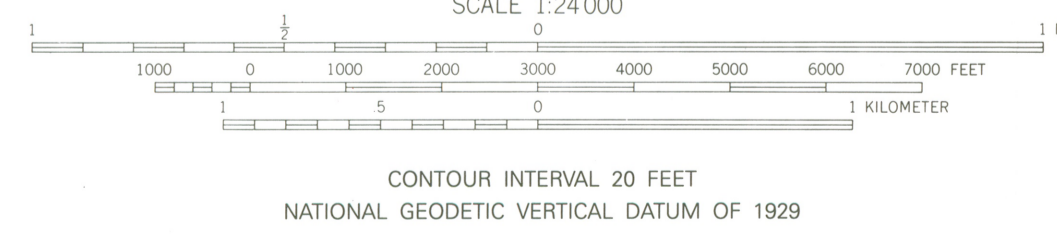
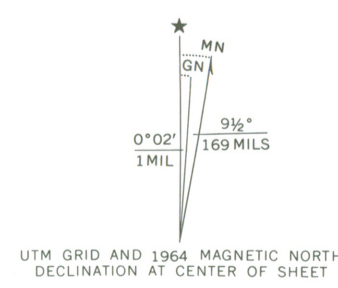
3929 SOUTH SH 16

FREDERICKSBURG VICINITY, GILLESPIE COUNTY, TEXAS

PHOTO 4 OF 4



Mapped, edited, and published by the Geological Survey
Control by USGS and NOS/NOAA
Topography by photogrammetric methods from aerial photographs taken 1963. Field checked 1964.
Polyconic projection. 1927 North American Datum
10,000-foot grid based on Texas coordinate system,
central and south central zones
1000-meter Universal Transverse Mercator grid ticks, zone 14,
shown in blue
The difference between 1927 North American Datum and North
American Datum of 1983 (NAD 83) for 7.5 minute intersections is
given in USGS Bulletin 1875. The NAD 83 is shown by dashed
corner ticks
Fine red dashed lines indicate selected fence lines
Map photospicted 1979
No major culture or drainage changes observed



ROAD CLASSIFICATION

Heavy-duty	Light-duty
Medium-duty	Unimproved dirt
U.S. Route	Slate Route

THIS MAP COMPLIES WITH NATIONAL MAP ACCURACY STANDARDS
FOR SALE BY U. S. GEOLOGICAL SURVEY, DENVER, COLORADO 80225, OR RESTON, VIRGINIA 22092
A FOLDER DESCRIBING TOPOGRAPHIC MAPS AND SYMBOLS IS AVAILABLE ON REQUEST

3098-223

LADY BIRD JOHNSON PARK, TEX.
(FORMERLY OAK CREST PARK)
30098-BB-TF-024
1964
PHOTOINSPECTED 1979
DMA 6244 III NW-SERIES V882

W.R. SCHOOL
3929 SOUTH 54TH ST
FREDERICKSBURG VICINITY, GILLESPIE COUNTY, TEXAS
UTM REFERENCE: 14 508720E 334400N
V.R. SCHOOL
3929 SOUTH 54TH ST
FREDERICKSBURG VICINITY, GILLESPIE COUNTY, TEXAS
UTM REFERENCE: 14 508720E 334400N



**TEXAS
HISTORICAL
COMMISSION**

Rick Perry • *Governor*
John L. Nau, III • *Chairman*
F. Lawrence Oaks • *Executive Director*

The State Agency for Historic Preservation



TO: Carol Shull, Keeper
National Register of Historic Places

FROM: Gregory W. Smith, National Register Coordinator
Texas Historical Commission

RE: Wrede School, Fredericksburg vicinity, Gillespie County, Texas

DATE: April 8, 2005

The following materials are submitted regarding: Wrede School, Fredericksburg vicinity, Gillespie County, Texas

<input checked="" type="checkbox"/>	Original National Register of Historic Places form
<input type="checkbox"/>	Resubmitted nomination
<input type="checkbox"/>	Multiple Property nomination form
<input checked="" type="checkbox"/>	Photographs
<input checked="" type="checkbox"/>	USGS map
<input type="checkbox"/>	Correspondence
<input type="checkbox"/>	Other:

COMMENTS:

SHPO requests substantive review

The enclosed owner objections (do) (do not) constitute a majority of property owners

Other _____