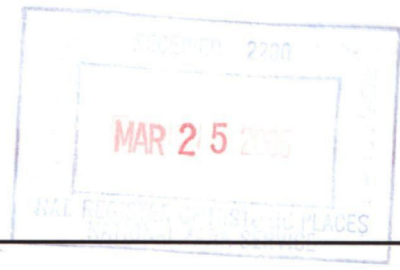


(Oct. 1990)
United States Department of the Interior
National Park Service



NATIONAL REGISTER OF HISTORIC PLACES
REGISTRATION FORM

1. NAME OF PROPERTY

HISTORIC NAME: Lower South Grape Creek School
OTHER NAME/SITE NUMBER: N/A

2. LOCATION

STREET & NUMBER: 10273 East US 290
CITY OR TOWN: Fredericksburg
STATE: Texas CODE: TX COUNTY: Gillespie
NOT FOR PUBLICATION: N/A
VICINITY: X
CODE: 171 ZIP CODE: 78624

3. STATE/FEDERAL AGENCY CERTIFICATION

As the designated authority under the National Historic Preservation Act, as amended, I hereby certify that this (x nomination) (___ request for determination of eligibility) meets the documentation standards for registering properties in the National Register of Historic Places and meets the procedural and professional requirements set forth in 36 CFR Part 60. In my opinion, the property (x meets) (___ does not meet) the National Register criteria. I recommend that this property be considered significant (___ nationally) (___ statewide) (x locally). (___ See continuation sheet for additional comments.)

[Handwritten Signature]

March 24, 2005
Date

Signature of certifying official
State Historic Preservation Officer, Texas Historical Commission
State or Federal agency and bureau

In my opinion, the property ___ meets ___ does not meet the National Register criteria. (___ See continuation sheet for additional comments.)

Signature of commenting or other official
Date
State or Federal agency and bureau

4. NATIONAL PARK SERVICE CERTIFICATION

I hereby certify that this property is:

- entered in the National Register
___ See continuation sheet.
- determined eligible for the National Register
___ See continuation sheet
- determined not eligible for the National Register
- removed from the National Register
- other (explain): _____

[Handwritten Signature]
Signature of the Keeper
Edson H. Beall

Date of Action
5/6/05

5. CLASSIFICATION

OWNERSHIP OF PROPERTY: Public - local

CATEGORY OF PROPERTY: Building

NUMBER OF RESOURCES WITHIN PROPERTY:	CONTRIBUTING	NONCONTRIBUTING
	3	0 BUILDINGS
	0	0 SITES
	2	1 STRUCTURES
	0	0 OBJECTS
	5	1 TOTAL

NUMBER OF CONTRIBUTING RESOURCES PREVIOUSLY LISTED IN THE NATIONAL REGISTER: 0

NAME OF RELATED MULTIPLE PROPERTY LISTING:

6. FUNCTION OR USE

HISTORIC FUNCTIONS: EDUCATION/school, school-related

CURRENT FUNCTIONS: SOCIAL/clubhouse

7. DESCRIPTION

ARCHITECTURAL CLASSIFICATION: N/A

MATERIALS: FOUNDATION STONE/Limestone; CONCRETE
WALLS STONE/Limestone, CONCRETE
ROOF METAL/Tin
OTHER N/A

NARRATIVE DESCRIPTION (see continuation sheets 7-5 through 7-7).

United States Department of the Interior
National Park Service

National Register of Historic Places Continuation Sheet

Section 7 Page 5

Lower South Grape Creek School
Fredericksburg vicinity, Gillespie County, Texas

Lower South Grape Creek School is in eastern Gillespie County, Texas, south of US Highway 290 approximately eleven miles east of the county seat of Fredericksburg. The school complex consists of three buildings and two structures built between 1901 and 1953 and forming the center of a dispersed community along South Grape Creek. The 1.1-acre school site on the south side of US Highway 290 consists of a rectangular-plan limestone schoolhouse with a metal-clad frame addition, a garage, restroom building, well house, and swing set. The school grounds have been the center of social activity for the community since the school moved here in 1901 from a previous site further south. With relatively little alteration since the school was deactivated in 1960, the site presents an intact view of rural life from the early twentieth century.

Setting

South Grape Creek rises 2½ miles east of U.S. Highway 87 in northwestern Kendall County. Intermittent in its upper reaches, the stream follows a northeasterly course for seventeen miles to its mouth on the Pedernales River, a mile north of U.S. Highway 290 in southeastern Gillespie County. Rising in the hills of the eastern Edwards Plateau, South Grape Creek passes from an area characterized by steep slopes and limestone benches into flat to rolling terrain. Clayey and loamy soils predominate, and vegetation consists primarily of grasses and open stands of live oak, Ashe juniper, and mesquite, with some oak and juniper woodlands.¹ The area is also known as the Blumenthal settlement, with that name appearing on a topographic map of the area and on highway signs about a mile west of the schoolhouse.

Lower South Grape Creek School is in eastern Gillespie County, about ten miles east of the county seat of Fredericksburg on the south side of US Highway 290 and the Pedernales River. The school served the South Grape Creek community, a dispersed community centered on South Grape Creek in southeast Gillespie County before that waterway empties into the Pedernales River just north of the schoolhouse. The school grounds lie on the south side of US Highway 290 and just west of South Grape Creek, which runs north and empties into the Pedernales River about one mile northeast of the school. The school complex consists of a 1901 schoolhouse with 1936 addition, a garage, restroom building, well house, and swing set. These facilities were built between 1901 and 1953. The rectangular-plan schoolhouse is aligned east-west and is near the center of the acreage. To the east of the school are the swing set and pumphouse. South of the school is a restroom building, and east of this are a garage and barbecue pit. Adjoining the fenced acreage on the south is the 1864 grave of Peter Burg, which is accessible from the school grounds. A large live oak tree north of the schoolhouse has a wide span that provides shade to the buildings and grounds. The land slopes gently from west to east toward South Grape Creek, and is also raised above the highway to the north. Three buildings (school, garage, and restroom) and two structures (well house and swing set) are considered contributing resources in this nomination. A barbecue pit and shelter built in 1996 is noncontributing. (see table of resources on page 7-7).

¹ "South Grape Creek."

United States Department of the Interior
National Park Service

National Register of Historic Places Continuation Sheet

Section 7 Page 6

Lower South Grape Creek School
Fredericksburg vicinity, Gillespie County, Texas

Architectural description

The Lower South Grape Creek School is a 31 by 18 foot limestone block single room building with a frame and sheet metal addition. Following the purchase of the land on the west bank of South Grape Creek, the main stone building was constructed in 1901. It has a gabled, v-crimp metal roof with a wooden bell tower on the east end and an interior stone chimney on the west end. The exterior and interior were plastered in the 1930s. The north and south walls each have three shuttered double-hung 4 over 4 wood framed windows. A single entrance door with transom in the east wall opens onto the frame and metal addition. The schoolroom has the original wooden floor.

The interior has a beaded board wainscoting extending about four feet above floor level on the two side walls. Blackboards extend along the west end and about four feet around the corners on two sides. Above the blackboards is a banner with the letters of the alphabet and portraits of Presidents Washington and Lincoln. Some original double student desks remain in the building. There is a shelf on the east wall built for holding lunches, with hooks underneath the shelf for coats. An original wooden storage cabinet stands against the north wall. In 1936 a frame and pressed metal addition was made onto the east end of the schoolhouse, measuring 18 by 20 feet. The height and pitch of the roof in the addition is lower than that in the original schoolhouse. The floor is a concrete slab, and the wooden frame was first enclosed on the north and east side with brick-pattern pressed tin, with the south side open. Around 1956 the porch was entirely closed with pressed tin. There are two 4 over 4 wooden frame windows on the north side, three 4 over 4 windows and a door on the south side, and off-center double wooden doors on the east.

A garage built for the teacher's car was built of sheet metal over a wooden frame in about 1940. It measures 10 by 15 feet. A well and pump house is built from concrete blocks, and measures about six by six feet with a pitched roof. A restroom building from 1953 replaced separate outhouses that were located on the western edge of the school yard. The restroom building, measuring twelve by ten feet, is sheet metal over wood framing and a concrete floor.² A metal swing set is also intact from the early 1940s, located between the school and the well house. A barbecue pit and shelter were built in 1996, and are noncontributing resources. The Peter Burg grave is located on the southeast end of the school yard, just across the fence. It has access from the school yard.

Changes since construction

The buildings and structures of the Lower South Grape Creek School reflect the continued use and expansion of the facilities through the historic period. The property is virtually unchanged since the school was consolidated with Fredericksburg in 1960. The square footage of the 1901 schoolhouse was nearly doubled with a 1936 addition. In the mid-1930s the limestone school was also plastered inside and out. Construction of a barbecue pit, garage, restroom, well house and swing set in the 1930s and 1940s reflect the expansion and continued use of the facilities. In 1994 the Texas Historical Commission designated Lower South Grape Creek School a Recorded Texas Historic Landmark, and awarded the Fredericksburg Independent School District the John and

² "Lower South Grape Creek."

United States Department of the Interior
National Park Service

National Register of Historic Places Continuation Sheet

Section 7 Page 7

Lower South Grape Creek School
Fredericksburg vicinity, Gillespie County, Texas

Joyce Karr Award for Excellence in Historic Architecture for the rehabilitation of the schoolhouse, with the assistance of the Lower South Grape Creek School Community Club and the Stonewall Heritage Society. A 1996 barbecue pit and shelter is a noncontributing resource in this nomination.

Even before the rural schools of Gillespie County closed as educational facilities, they were also serving as social gathering centers, polling places, and community clubs, often for several decades. As the schools closed the students and facilities were absorbed into the Fredericksburg Independent School District. In 1999 a concerted effort to document and preserve these properties was begun, with the establishment of Friends of Gillespie County Country Schools. In an effort to assume full stewardship of the historic buildings, a group of twelve community clubs that were leasing their meeting spaces from the Fredericksburg ISD sought to have the properties donated to them. But state law forbade school districts from donating such surplus property, even to non-profit groups and community associations. The Friends wrote legislation, sponsored by State Senator Jeff Wentworth and State Representative Harvey Hilderbran, to allow donation of these properties to a governmental or non-profit organization. The bills were passed in the Texas Legislature and ratified by voters as an amendment to the state constitution in November, 2001. The Friends have received preservation awards from the Texas Historical Commission and Preservation Texas, and have also sponsored open houses and fundraisers to build support for the preservation of twelve of the rural schools of Gillespie County. The Friends are now completing nominations to list these twelve schools on the National Register of Historic Places.

Table of resources within property:

Lower South Grape Creek School	1901 / 1936	BUILDING	contributing
Garage	c. 1940	BUILDING	contributing
Swing set	c. 1940	STRUCTURE	contributing
Well house	c. 1945	STRUCTURE	contributing
Restroom building	1953	BUILDING	contributing
Barbecue pit	1996	STRUCTURE	noncontributing

8. STATEMENT OF SIGNIFICANCE

APPLICABLE NATIONAL REGISTER CRITERIA

- A** PROPERTY IS ASSOCIATED WITH EVENTS THAT HAVE MADE A SIGNIFICANT CONTRIBUTION TO THE BROAD PATTERNS OF OUR HISTORY.
- B** PROPERTY IS ASSOCIATED WITH THE LIVES OF PERSONS SIGNIFICANT IN OUR PAST.
- C** PROPERTY EMBODIES THE DISTINCTIVE CHARACTERISTICS OF A TYPE, PERIOD, OR METHOD OF CONSTRUCTION OR REPRESENTS THE WORK OF A MASTER, OR POSSESSES HIGH ARTISTIC VALUE, OR REPRESENTS A SIGNIFICANT AND DISTINGUISHABLE ENTITY WHOSE COMPONENTS LACK INDIVIDUAL DISTINCTION.
- D** PROPERTY HAS YIELDED, OR IS LIKELY TO YIELD, INFORMATION IMPORTANT IN PREHISTORY OR HISTORY.

CRITERIA CONSIDERATIONS: N/A

AREAS OF SIGNIFICANCE: EDUCATION

PERIOD OF SIGNIFICANCE: 1901-1955

SIGNIFICANT DATES: 1901

SIGNIFICANT PERSON: N/A

CULTURAL AFFILIATION: N/A

ARCHITECT/BUILDER: N/A

NARRATIVE STATEMENT OF SIGNIFICANCE (see continuation sheets 8-8 through 8-13).

9. MAJOR BIBLIOGRAPHIC REFERENCES

BIBLIOGRAPHY (see continuation sheets 9-14 through 9-18).

PREVIOUS DOCUMENTATION ON FILE (NPS): N/A

- preliminary determination of individual listing (36 CFR 67) has been requested.
- previously listed in the National Register
- previously determined eligible by the National Register
- designated a National Historic Landmark
- recorded by Historic American Buildings Survey #
- recorded by Historic American Engineering Record #

PRIMARY LOCATION OF ADDITIONAL DATA:

- State historic preservation office (*Texas Historical Commission*)
- Other state agency
- Federal agency
- Local government
- University
- Other -- Specify Repository

United States Department of the Interior
National Park Service

National Register of Historic Places Continuation Sheet

Section 8 Page 8

Lower South Grape Creek School
Fredericksburg vicinity, Gillespie County, Texas

The Lower South Grape Creek School complex in the vicinity of Fredericksburg in Gillespie County, Texas is nominated for listing in the National Register of Historic Places under Criterion A in the area of Education at the local level of significance. The property has undergone little alteration since the historic period, and is able to convey its significance as a place where the process of conveying and acquiring knowledge and skills through systematic instruction, training and study was undertaken. The property retains integrity of location, design, setting, materials, workmanship, feeling and association to a high degree.

Education in Gillespie County

German immigrants set the standard for education after Texas achieved statehood in 1845. Historian and educator Frederick Eby asserted that the German settlements had a spirit of intellectual development and social improvement:

By far the most progressive measures for the promotion of schools were adopted by the German communities of south central Texas. As early as 1845 a colony of Germans settled in New Braunfels. After the Prussian Revolution in 1848 large numbers emigrated for political reasons and located upon the fertile lands of the south central portion of the state. Among them were many of superior intelligence and training; they brought with them the customs, love of learning, and idealism of the older Germany of Kant, Fichte, and Schiller. Many of them had left the Fatherland to secure a larger measure of political and religious freedom. They had been educated in schools which from the lowest to the highest were maintained and supported by the state and were free to all children. They naturally desired similar advantages for their children here in Texas.³

The German immigrants who settled Gillespie County carried with them a keen interest in education, and as a result educational institutions and facilities around Fredericksburg tended to be of higher quality than typical rural schools in Texas. The first school was established in the *Marketplatz* (Market Square) at the center of Fredericksburg. The *Vereins Kirche* (Community Church) was an octagonal-shaped structure built in 1847 as a combination church, school, fort, and storehouse. Tuition at the school began at one dollar per pupil per quarter, and the *Vereins Kirche* could hold about seventy pupils. The earliest teachers, including Johann Leyendecker, Jacob Brodbeck, Reverend Burchard Dangers, and Heinrich Ochs, were also noted writers, scientists, and men of letters. August Siemering was secretary for an intellectual community established at Sisterdale, 25 miles southeast of Fredericksburg.⁴

In 1854, the Texas Legislature established a public school system for the first time, encouraging counties to create public school districts to bring educational opportunities to more citizens. Out of one hundred counties, only a handful organized a public school system. Gillespie County created five school districts that year to cover the entire county population. The state provided some financial support, including a steady income for teachers who taught English, an improvement for teachers over the uncertain tuition-supported system. The

³ Eby 130.

⁴ Mohon and Mohon, 125-126.

United States Department of the Interior
National Park Service

National Register of Historic Places Continuation Sheet

Section 8 Page 9

Lower South Grape Creek School
Fredericksburg vicinity, Gillespie County, Texas

first public schools in Gillespie County opened that year, as well as the first parochial school through St. Mary's Catholic Church.⁵

The Civil War disrupted educational efforts, but following the war there was an increase in the establishment of rural schools. Rural schools were organized through the county commissioners court, and a superintendent of education oversaw the educational program within the county. The superintendent had jurisdiction over all the schools in the county except the independent school districts, which were organized starting in the 1880s. Many rural schools were built on donated land centrally located in dispersed agricultural communities, with many children walking or riding horses several miles to school. Rural schools operated through an ad valorem property tax, providing income for the teachers and perhaps a small maintenance budget for the school building and grounds. The school year was often scheduled around the fall harvest, and many students' attendance was irregular when their help was needed at home. Some children received the majority of their schooling at home. One writer recalled the he was "more than fifteen years old before I ever attended school. My mother had given us all the help she could, and we had applied ourselves to studying such books as we had."⁶

Many of the Gillespie County schools offered courses both in German and English to cater to the predominantly German-speaking settlers. The end of the school year was often celebrated with an all-day affair called the *Schulpruefung* (school examination). The students demonstrated their knowledge of subjects through oral exams, and often when the testing was complete a picnic was held, with barbecue, beer and dancing for the families of the students. The *Schulpruefung* tradition continued through the nineteenth and early twentieth centuries.⁷

From 1876 to 1884 the German Methodist Church in Fredericksburg operated Fredericksburg College as a way to supplement the educational opportunities of area students. The school was one of four in the state to receive aid from the Peabody Fund, established by George Peabody to assist the former Confederate states in establishing free public schools.⁸ The building converted to a public school in Fredericksburg, and is still used today on the Fredericksburg Independent School District middle school campus.

The African-American population in Gillespie County was never very high historically, and none of the rural schools had separate facilities for African-American students. In the late 1860s children of the Washingtons, who were freed slaves, attended Meusebach Creek School with Anglo children, probably one of the first cases of an integrated school in the South.⁹ Records from 1871 report eighteen African-American students at a school in Fredericksburg. In 1937 the Fredericksburg Independent School District was the only district in Gillespie County with separate facilities for African-Americans, with seven students reported that year out of a

⁵ Mohon and Mohon, 126.

⁶ Biggers 85.

⁷ Mohon and Mohon, 127-128.

⁸ Gold 28.

⁹ Mohon and Mohon, 133.

United States Department of the Interior
National Park Service

National Register of Historic Places Continuation Sheet

Section 8 Page 10

Lower South Grape Creek School
Fredericksburg vicinity, Gillespie County, Texas

countywide total of 2,862.¹⁰ The African-American school in Fredericksburg was moved from its original site to 107 E. Schubert Street.

Rural school districts proliferated in Gillespie County in the late nineteenth and early twentieth centuries, reaching a peak of 42 districts at one point. In 1937, thirty of forty-one rural school districts were served by a single teacher, while eight districts had two teachers, two had three each, and one rural district, Stonewall, had four teachers for its average daily attendance of 86 students. Average daily attendances (A.D.A.) at the other rural schools ranged from six at Flat Rock to 65 at Morris Ranch.¹¹ Today Gillespie County is served by four school districts. Fredericksburg Independent School District serves the largest area and offers courses in grades one through twelve. Harper, west of Fredericksburg, also teaches twelve grades. Doss schools, in the northwest part of the county, teach grades one through eight, and Stonewall in the east part of the county offers classes through fifth grade.¹²

The Gilmer-Aikin Law of 1949 resulted in the consolidation of most rural schools in Texas. But in Gillespie County, a stronger sense of rural community prevailed, and a dozen of the rural schools operated well beyond the mandated consolidation into the 1950s and 1960s. Stonewall and Rocky Hill schools held off consolidation with Fredericksburg until the 1970s. Many of the rural schools in Gillespie County were already serving multiple purposes as community centers and as hubs of social activity when they ceased to operate as educational centers. As a result, Gillespie County has perhaps the most intact collection of rural schoolhouses remaining in Texas. With few exceptions, the schoolhouses and ancillary buildings and structures retain a high degree of integrity of location, design, setting, materials, workmanship, feeling and association. The White Oak School was moved to the Pioneer Museum Complex in downtown Fredericksburg in 1990. The 1905 schoolhouse at Doss now serves as the local fire station. A few of the former schools, such as at Nebo (Eckert), have been converted to residences. The Petersburg and Squaw Creek schools are used as hay barns. Out of more than forty historic schools, only the main buildings at Hayden and Palo Alto have been demolished, but even at the latter site the barbecue pit remains standing.¹³ Other school buildings that remain still operate as community centers, reunion halls, festival headquarters, and voting places.

The table "Gillespie County School Districts" on page 8-11 includes the rural district number, name, years established and consolidated, average daily attendance in 1937 (A.D.A.), and historical designations for each of 42 rural school districts and two independent school districts in Gillespie County. Abbreviations for historical designations are OTHM (Official Texas Historical Marker), RTHL (Recorded Texas Historic Landmark), NRHP (National Register of Historic Places), and NHL (National Historic Landmark, for the Junction School at Lyndon B. Johnson National Historic Park).

¹⁰ Texas Statewide School Adequacy Survey, 659-670.

¹¹ Texas Statewide School Adequacy Survey, 659-670. See also table on page 8-11.

¹² Mohon and Mohon, 130, "Lower South Grape Creek."

¹³ Gillespie County School Histories.

United States Department of the Interior
National Park Service

National Register of Historic Places Continuation Sheet

Section 8 Page 11Lower South Grape Creek School
Fredericksburg vicinity, Gillespie County, Texas

Gillespie County School Districts

No.	Name	Established	Consolidated	A.D.A.	Consolidated with	Historical designations
1	Big Flat (Tasca)		1939	15	Willow City	
2	Live Oak	1854	1949	25	Fredericksburg	
3	Luckenbach	1855	1964	29	Fredericksburg	RTHL 1982
4	Cave Creek	1870	1950	28	Fredericksburg	
5	Rocky Hill	1885	1977	39	Fredericksburg	
6	Palo Alto	1870	1946	48		
7	Pilot Knob	1880	1963	40	Fredericksburg	
8	Grape Hill	1885	before 1937	--	Luckenbach	
9	Squaw Creek	1867	1954	12	Doss	
10	Crabapple	1877	1957	33	Fredericksburg	OTHM 1994
11	Meusebach Creek	1858	1951	47	Fredericksburg	
12	Pedernales	1867	1945	10		OTHM 1993
13	Young's Chapel	before 1889		11		
14	Grapetown	1859	1949	25	Rocky Hill	RTHL 1984
15	Junction	1881	1947	30	Stonewall	NHL
16	Cherry Spring	1859	1962	22	Fredericksburg	OTHM 1985 RTHL 1988
17	Honey Creek	before 1889	1942	7	Fredericksburg	
18	Stonewall	1860	1970	86	Fredericksburg	
19	Hayden	before 1904	1942	18	Morris Ranch	
20	Wrede	1871	1960	14	Fredericksburg	
21	Lower South Grape Creek	1871	1960	25	Fredericksburg	RTHL 1994
22	Rheingold	1873	1949	33	Fredericksburg	
23	Knopp	before 1889	1947	49	Fredericksburg	
24	Doss	1884	--	44	--	OTHM 1985
25	Tivydale	1880	1950	21	Harper	
26	Wolf Creek	1899	1946	15	Morris Ranch	
27	Cherry Mountain	1883	1949	11	Fredericksburg	RTHL 1992
28	Onion Creek	1881	1947	9	Doss	
29	Pecan Creek	1889	1955	25	Fredericksburg	
30	Nebo (Eckert)	1889	1950	36	Willow City	
31	Bear Creek	1889	1949	13	Wrede	
32	Klein Branch	1884		22		
33	Nebgen	1881	1949	14	Stonewall	
34	Pocket		1940	10	Harper	
35	Flat Rock	1889	1937	6	Harper	
36	Klein Frankreich	1900	1949	12	Fredericksburg	
37	White Oak	1892	1950	20	Morris Ranch	
38	Williams Creek	1890	1950	31	Stonewall	
39	Petersburg	1890	1951	16		
40	Morris Ranch	1890	1962	65	Fredericksburg	NRHP 1983 RTHL 1980
41	Willow City	1876	1961	35	Fredericksburg	
42	Cain City	1915	1949	19	Rocky Hill	
	Fredericksburg ISD	1847	--	601	--	
	Harper ISD	1884	--	139	--	

United States Department of the Interior
National Park Service

National Register of Historic Places Continuation Sheet

Section 8 Page 12

Lower South Grape Creek School
Fredericksburg vicinity, Gillespie County, Texas

Lower South Grape Creek School

Schools along South Grape Creek began with the Luckenbach School (4 miles southwest) in 1855. Further settlement along the creek resulted in the establishment of schools named Grapetown in 1859, South Grape Creek in 1871, Grape Hill in 1885, and Cain City in 1915. Among the earliest settlers along South Grape Creek were the Burg, Frantzen, Toepperwein, Scharnhorst, Hunter, Blank, Weber, Gellerman and Feller families. Some of the earliest settlers, such as Peter Burg, John Blank, William Feller, and Henry Kirchner were Unionists opposed to the secessionist movement. All four of these men were victims of J. P. Waldrip's "Hanging Mob" (*Haengerbande*) during the Civil War. Bank, Feller, and Kirchner were hanged near the Luckenbach Lane. Burg was shot in the back in 1864, and his monumental burial plot borders the south fence of the school yard.¹⁴

On June 6, 1871, Luckenbach School trustees were authorized to buy a small tract, 1.33 acres, on the west bank of South Grape Creek north of the Luckenbach School. The 250 by 225 foot parcel was purchased from Juliana Wehmeyer, widow of Franz Wehmeyer, for \$50.00.¹⁵ The community built a log cabin schoolhouse on the new parcel, with Theodor Hulsemann as the earliest teacher. The school operated from 1871 to 1889 as part of the Luckenbach School system. On May 12, 1889, the school was named Lower South Grape Creek and assigned rural district number 21. The school was named Lower South Grape Creek because the Grapetown School had been named Upper South Grape Creek. Charles Ahrens, Ed Frantzen, and Peter Heep were elected the first trustees of the newly designated school. The school was now an entity in its own right separate from Luckenbach. In time the school site proved inconvenient, and the community sought to establish a more central location for the school.¹⁶

A new site was selected a mile and a half to the north, along the west bank of South Grape Creek and on the south side of the Austin Road. A new limestone schoolhouse was built by May 13, 1901, when trustees Robert Wehmeyer and Robert Frantzen reported the school's progress to the Gillespie County Commissioners Court. The cost of the building expenditures were \$567.00. Proceeds from the sale of the previous school site at the Wehmeyer place netted \$100.00. That amount and the remainder were paid in full, so that the school had no further indebtedness.¹⁷ During the 1916-17 school year the school enrollment reached eighty-two students, which was the largest on record. Andrew Frantzen attended Lower South Grape Creek School in the 1930s, and was one of the first local casualties in World War II, being killed in action in the Fiji Islands. As a tribute to him and Harold Ahrens, the Fredericksburg Veterans of Foreign Wars Post 7105 named theirs the Frantzen-Ahrens Post.

The end of year school closings were held on the porch addition after its construction in the early 1940s. Prior to that, school closings were held across the river on the Kusenberger place on a wooden platform used for a stage. Originally a shallow hand-dug well with a pulley, rope and bucket provided water for the school.

¹⁴ "Lower South Grape Creek."

¹⁵ "Lower South Grape Creek."

¹⁶ "Lower South Grape Creek."

¹⁷ "Lower South Grape Creek."

United States Department of the Interior
National Park Service

National Register of Historic Places Continuation Sheet

Section 8 Page 13

Lower South Grape Creek School
Fredericksburg vicinity, Gillespie County, Texas

Carpenter and red ants eventually took over and contaminated the well. When rural electricity became available in the 1940s, a new well was drilled with a jet pump and pressure tank. At the same time lights were installed in the school, replacing the oil lamps that had been used for many years. A water fountain was added inside the north porch, consisting of a row of garden faucets turned sideways with a long tin trough below to catch the water. This is still in place today. In 1958, two large fluorescent lights were placed in the school.¹⁸

By the 1959-60 school year the enrollment had fallen to twenty-one. School trustees voted to consolidate the school with Fredericksburg beginning the following year. The people of the community then organized a community club. The club ceased to exist for a short period but was then reorganized with increased vigor. Raising money through annual benefit barbecues, the Lower South Grape Creek Community Club has done an admirable job maintaining and improving the school and grounds. A Texas Historical Marker was obtained in 1994, central heat and air was installed in the main schoolroom in 1995, and a new barbecue pit with a metal roof was built in 1996.

Conclusion

Rural schools were the primary educational institutions for the majority of Texans in the late nineteenth and early twentieth centuries. These facilities provided the highest level of schooling for many individuals, and as training and education centers for those who went on to high school or college in larger cities. Rural schools also served as social centers for smaller communities. The school buildings were most often vernacular, with no discernible architectural style, and built from local materials with log, frame, or stone construction. Through the process of school consolidation, the majority of these rural school buildings were vacated and subsequently demolished. In Gillespie County, the tradition of community activity continued in these rural buildings, preserving many of the structures that otherwise would have been lost. In addition, the tradition of rural education was continued in Gillespie County for a longer period than elsewhere in the state. As a result, Gillespie County has one of the most intact concentrations of rural schools in Texas.

The Lower South Grape Creek School complex comprises an intact rural landscape from the early twentieth centuries. Built largely of local materials in vernacular style, the buildings convey a sense of their time and place as a good example of the early days of education in the state. The resources are nearly unaltered since the historic period of 1901-1960, and much of the original historic material remains intact. The facility continues to serve as a social gathering place for the community. The Lower South Grape Creek School complex meets Criterion A, in the area of Education, for its role in the process of conveying and acquiring knowledge and skills through systematic instruction, training and study. The property retains integrity of materials, workmanship, design, location, setting, association and feeling to a high degree.

¹⁸ "Lower South Grape Creek."

United States Department of the Interior
National Park Service

National Register of Historic Places Continuation Sheet

Section 9 Page 14

Lower South Grape Creek School
Fredericksburg vicinity, Gillespie County, Texas

BIBLIOGRAPHY

- Benjamin, Gilbert Giddings. The Germans in Texas: A Study in Immigration. Austin: Jenkins Publishing Company, 1974 reprint (1910).
- "Bierschwale, Heinrich House." Recorded Texas Historic Landmark file, 1987. Texas Historical Commission files.
- Biesele, Rudolph Leopold. The History of the German Settlements in Texas 1831-1861. Austin: Eakin Press, 1987 reprint (1930).
- Biggers, Don H. German Pioneers in Texas. Austin: Eakin Publications, 1983 reprint (1925).
- Blanton, Annie Webb. "The Child of the Texas One-Teacher School." Austin: University of Texas Bulletin 3613 (1936).
- Blanton, Annie Webb. "A Handbook of Instruction As To Education in Texas: Scholastic Years, 1918-1922." Austin: Department of Education Bulletin 157 (January 1923).
- Bludworth, G. T. "History of Education in Texas," *Texas School Journal*, 26 (May 1909).
- Bracht, Viktor. Texas in 1848. Translated from the German by Charles Frank Schmidt, introduction by Theodore G. Gish. Manchaca, Texas: German-Texan Heritage Society, 1991.
- "Cave Creek." Article in The New Handbook of Texas. Austin: Texas State Historical Association, 1996.
- "Cherry Mountain School Complex." Recorded Texas Historic Landmark file, 1988. Texas Historical Commission files.
- "Cherry Spring Creek." Article in The New Handbook of Texas. Austin: Texas State Historical Association, 1996.
- "Cherry Spring Schoolhouse." Recorded Texas Historic Landmark file, 1988. Texas Historical Commission files.
- "Cherry Spring, Texas." Article by Martin Donnell Kohout in The New Handbook of Texas. Austin: Texas State Historical Association, 1996.

United States Department of the Interior
National Park Service

National Register of Historic Places Continuation Sheet

Section 9 Page 15

Lower South Grape Creek School
Fredericksburg vicinity, Gillespie County, Texas

BIBLIOGRAPHY (continued)

- Clegg, Luther Bryan. The Empty Schoolhouse: Memories of One-Room Texas Schools. College Station: Texas A&M University Press, 1997.
- "Crabapple Creek." Article in The New Handbook of Texas. Austin: Texas State Historical Association, 1996.
- "Crabapple School." Official Texas Historical Marker file, 1994. Texas Historical Commission files.
- "Crabapple, Texas." Article by Martin Donnell Kohout in The New Handbook of Texas. Austin: Texas State Historical Association, 1996.
- "Doss School." Official Texas Historical Marker file, 1985. Texas Historical Commission files.
- Eby, Frederick. Education in Texas: Source Materials. Austin: University of Texas Bulletin, No. 1824 (April 25, 1918).
- Eby, Frederick. The Development of Education in Texas. New York: 1925.
- Evans, Cecil E. The Story of Texas Schools. Austin: 1955.
- "Fredericksburg College." Article by Clinton P. Hartmann in The New Handbook of Texas. Austin: Texas State Historical Association, 1996.
- "Fredericksburg College Building." Recorded Texas Historical Landmark file, 1971. Texas Historical Commission files.
- "Fredericksburg, Texas." Article by Martin Donnell Kohout in The New Handbook of Texas. Austin: Texas State Historical Association, 1996.
- "Gillespie County." Article by Martin Donnell Kohout in The New Handbook of Texas. Austin: Texas State Historical Association, 1996.
- Gillespie County Historical Society. Pioneers in God's Hills. Austin: Von Boeckmann-Jones, two volumes, 1960, 1974.
- Gillespie County Program Building Committee. Gillespie County School Histories. Fredericksburg: Dietel and Son Printing, 1983.

United States Department of the Interior
National Park Service

National Register of Historic Places Continuation Sheet

Section 9 Page 16

Lower South Grape Creek School
Fredericksburg vicinity, Gillespie County, Texas

BIBLIOGRAPHY (continued)

- Gold, Ella Amanda. "The History of Education in Gillespie County." M. A. thesis, University of Texas, 1945.
- "Gold, Texas." Article by Martin Donnell Kohout in The New Handbook of Texas. Austin: Texas State Historical Association, 1996.
- Graham, Bess Althaus. A Photographic Survey of Rural Gillespie County. Austin: Texas Historic Resources Fellowship Project, 1988. On file at Texas Historical Commission.
- "Grapetown School." Recorded Texas Historic Landmark file, 1984. Texas Historical Commission files.
- Holloway, William J. "The Contributions of the Ex Officio and State Superintendent of Public Instruction to the Development of the Public School System in Texas from 1836 to 1884." M. A. thesis, University of Texas, 1929.
- Jordan, Gilbert J. Yesterday in the Texas Hill Country. College Station: Texas A&M University Press, 1979.
- "Little Rock House." Recorded Texas Historic Landmark file, 1965. Texas Historical Commission files.
- "Lower South Grape Creek School." Recorded Texas Historic Landmark file, 1994. Texas Historical Commission files.
- "Luckenbach School." Recorded Texas Historic Landmark file, 1982. Texas Historical Commission files.
- "Luckenbach, Texas." Article by Glen E. Lich in The New Handbook of Texas. Austin: Texas State Historical Association, 1996.
- "Market Square (Marketplatz)." Official Texas Historical Marker file, 1992. Texas Historical Commission files.
- McAlister, Samuel Bertram. Government and Law of the Texas Public School System. College Station: The Education Publishing Company, 1935.
- "Meusebach Creek." Article in The New Handbook of Texas. Austin: Texas State Historical Association, 1996.
- Mohon, Monty and Michelle Mohon. Gillespie County: A View of Its Past. Virginia Beach VA: The Donning Company Publishers, 1996.

United States Department of the Interior
National Park Service

National Register of Historic Places Continuation Sheet

Section 9 Page 17

Lower South Grape Creek School
Fredericksburg vicinity, Gillespie County, Texas

BIBLIOGRAPHY (continued)

"Morris Ranch Schoolhouse." National Register of Historic Places file, 1985. Texas Historical Commission files.

"Morris Ranch Schoolhouse." Recorded Texas Historic Landmark file, 1980. Texas Historical Commission files.

"Old Cherry Spring School (Das Alte Schulhaus)." Official Texas Historical Marker file, 1985. Texas Historical Commission files.

"Pedernales Rural School." Official Texas Historical Marker file, 1993. Texas Historical Commission files.

Rogers, E. E. "The History of Legislation Relating to the Public Schools of Texas, 1845-1930." M. A. Thesis, Southern Methodist University, 1930.

Rowold, Milam C. "The Texas Rural Schools Revisited." Ph. D. dissertation, University of Texas at Austin, 1983.

Schmidt, Curt E. Oma & Opa: German-Texan Pioneers. New Braunfels, Texas: Folkways Publishing Company, 1975.

Sitton, Thad and Milam C. Rowold. Ringling the Children In: Texas Country Schools. College Station: Texas A&M University Press, 1987.

"South Grape Creek." Article in The New Handbook of Texas. Austin: Texas State Historical Association, 1996.

Struve, Walter. Germans & Texans: Commerce, Migration, and Culture in the Days of the Lone Star Republic. Austin: University of Texas Press, 1996.

Texas Public Schools: Centennial Handbook 1854-1954. Austin: Texas Education Agency, 1954.

Texas Statewide School Adequacy Survey. L. D. Stokes, State Board of Education, Technical Director. Austin: Texas State Board of Education, 1937.

"Vereins Kirche." Recorded Texas Historic Landmark file, 1967. Texas Historical Commission files.

United States Department of the Interior
National Park Service

National Register of Historic Places Continuation Sheet

Section 9 Page 18

Lower South Grape Creek School
Fredericksburg vicinity, Gillespie County, Texas

BIBLIOGRAPHY (continued)

Weinheimer, Ophelia Nielsen. "The Early History of Gillespie County, Texas." M. A. thesis, Southwest Texas State Teachers College, 1952.

White, Anna Louise. "The Teacher in Texas: 1836-1879." M. A. thesis, Baylor University, 1972.

White, Lee Wayne. "Popular Education and the State Superintendent of Public Instruction in Texas, 1860-1899." Ph. D. dissertation, The University of Texas at Austin, 1974.

White, Michael Allen. "History of Education in Texas, 1860-1884." Ph. D. dissertation, Baylor University, 1969.

"Williams Creek School." Recorded Texas Historic Landmark file, 2002. Texas Historical Commission files.

"Willow Creek." Article in The New Handbook of Texas. Austin: Texas State Historical Association, 1996.

"Willow City, Texas." Article by Martin Donnell Kohout in The New Handbook of Texas. Austin: Texas State Historical Association, 1996.

10. GEOGRAPHICAL DATA

ACREAGE OF PROPERTY: 1.09 acres

UTM REFERENCES	<u>Zone</u>	<u>Easting</u>	<u>Northing</u>
	14	526160	3343540

VERBAL BOUNDARY DESCRIPTION: Legal parcel number Property ID R83747, A0388 F. DeLeon #19, 1.09 acres in Gillespie County, Texas.

BOUNDARY JUSTIFICATION: The boundary includes all property historically associated with the resource.

11. FORM PREPARED BY (with assistance from Bob Brinkman, Texas Historical Commission)

NAME/TITLE: Ronni Pue

ORGANIZATION: Save Rural Texas Schools

DATE: December 10, 2004

STREET & NUMBER: P.O. Box 413

TELEPHONE: (830) 997-8655

CITY OR TOWN: Fredericksburg

STATE: Texas

ZIP CODE: 78624

ADDITIONAL DOCUMENTATION

CONTINUATION SHEETS (see continuation sheets FIGURE-20 through FIGURE-21)

MAPS (see continuation sheet MAP-19 and topographic map)

PHOTOGRAPHS (see continuation sheet PHOTO-22)

ADDITIONAL ITEMS

PROPERTY OWNER

NAME: Gillespie County, ATTN: The Hon. Mark Stroecher

STREET & NUMBER: 101 West Main

TELEPHONE: (830) 997-7502

CITY OR TOWN: Fredericksburg

STATE: Texas

ZIP CODE: 78624

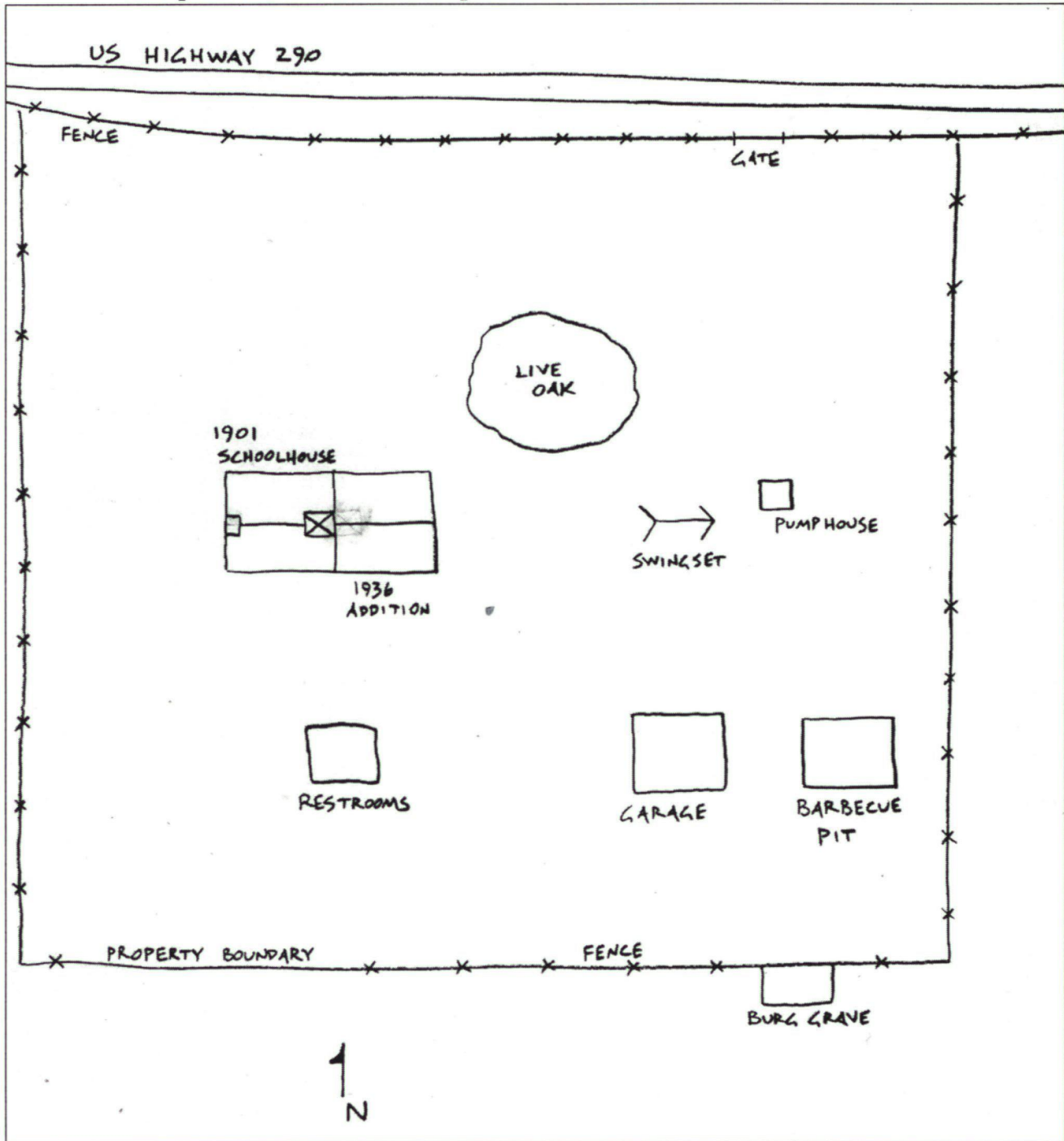
United States Department of the Interior
National Park Service

National Register of Historic Places Continuation Sheet

Section MAP Page 19

Lower South Grape Creek School
Fredericksburg vicinity, Gillespie County, Texas

Site plan of Lower South Grape Creek School, north at top. Not to scale.



United States Department of the Interior
National Park Service

National Register of Historic Places Continuation Sheet

Section FIGURE Page 20

Lower South Grape Creek School
Fredericksburg vicinity, Gillespie County, Texas

Figure 1. Lower South Grape Creek School and students, 1906.



United States Department of the Interior
National Park Service

National Register of Historic Places Continuation Sheet

Section FIGURE Page 21

Lower South Grape Creek School
Fredericksburg vicinity, Gillespie County, Texas

Figure 2. Lower South Grape Creek School and students, 1936.



United States Department of the Interior
National Park Service

National Register of Historic Places Continuation Sheet

Section PHOTO Page 22

Lower South Grape Creek School
Fredericksburg vicinity, Gillespie County, Texas

PHOTOGRAPHIC INVENTORY

**Lower South Grape Creek School
10273 E. US Highway 290
Fredericksburg vicinity, Gillespie County, Texas
Photographs by Greg Smith, October 2004.
Negatives on file at Texas Historical Commission.**

Photograph 1 of 3
Lower South Grape Creek School, northwest oblique
Camera facing southeast

Photograph 2 of 3
Lower South Grape Creek School, north elevation
Camera facing south

Photograph 3 of 3
Lower South Grape Creek School well house, southeast oblique
Camera facing northwest

UNITED STATES DEPARTMENT OF THE INTERIOR
NATIONAL PARK SERVICE

NATIONAL REGISTER OF HISTORIC PLACES
EVALUATION/RETURN SHEET

REQUESTED ACTION: NOMINATION

PROPERTY Lower South Grape Creek School
NAME:

MULTIPLE
NAME:

STATE & COUNTY: TEXAS, Gillespie

DATE RECEIVED: 3/25/05 DATE OF PENDING LIST: 4/20/05
DATE OF 16TH DAY: 5/05/05 DATE OF 45TH DAY: 5/08/05
DATE OF WEEKLY LIST:

REFERENCE NUMBER: 05000391

REASONS FOR REVIEW:

APPEAL: N DATA PROBLEM: N LANDSCAPE: N LESS THAN 50 YEARS: N
OTHER: N PDIL: N PERIOD: N PROGRAM UNAPPROVED: N
REQUEST: N SAMPLE: N SLR DRAFT: N NATIONAL: N

COMMENT WAIVER: N

ACCEPT RETURN REJECT 5/6/05 DATE

ABSTRACT/SUMMARY COMMENTS:

Entered in the
National Register

RECOM./CRITERIA _____

REVIEWER _____ DISCIPLINE _____

TELEPHONE _____ DATE _____

DOCUMENTATION see attached comments Y/N see attached SLR Y/N

If a nomination is returned to the nominating authority, the nomination is no longer under consideration by the NPS.



LOWER SOUTH GRAPE CREEK SCHOOL

10273 E. US. HIGHWAY 290

FREDERICKSBURG, VICINITY, GILLESPIE COUNTY, TEXAS

PHOTO 1 OF 3



LOWER SOUTH GRAPE CREEK SCHOOL

10273 E. US HIGHWAY 290

FREDERICKSBURG VICINITY, GILLESPIE COUNTY, TEXAS

PHOTO 2 OF 3



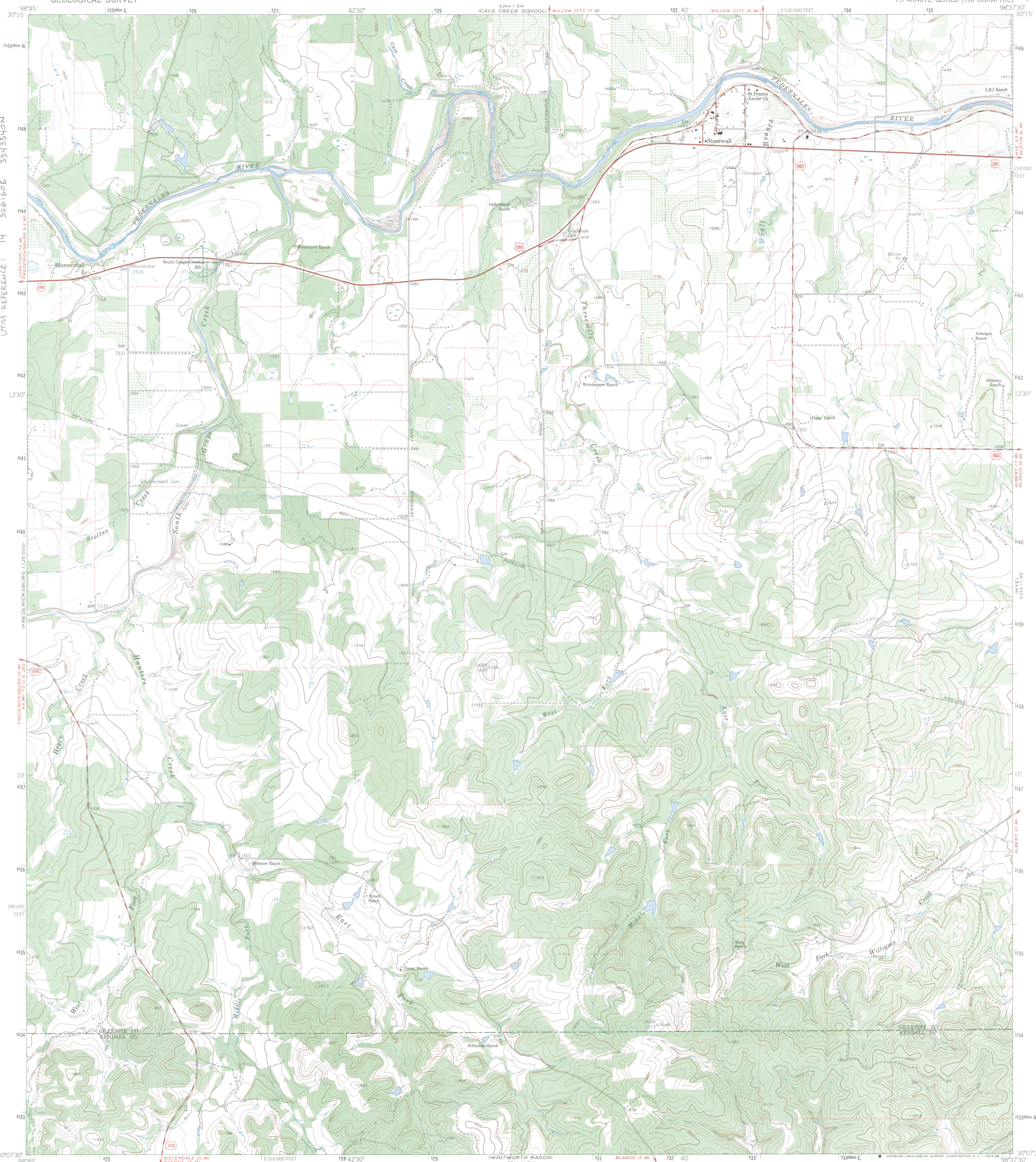
LOWER SOUTH GRAPE CREEK SCHOOL

10273 E. US HIGHWAY 290

FREDERICKSBURG VICINITY, GILLESPIE COUNTY, TEXAS

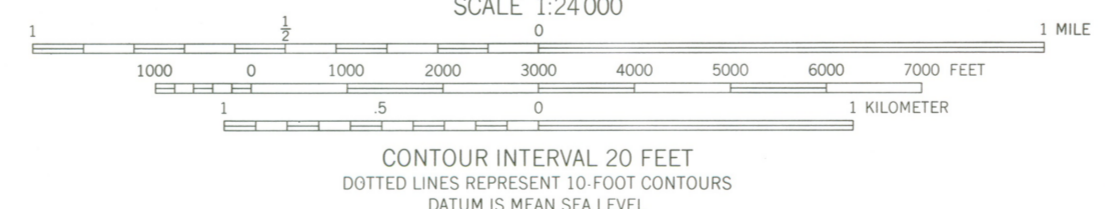
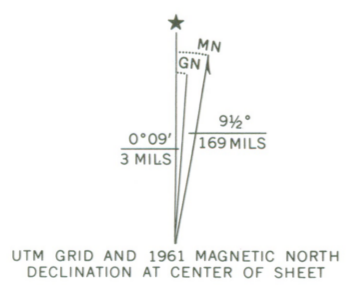
PHOTO 3 OF 3

LOWER SOUTH GRAPE CREEK SCHOOL
10273 E. US HIGHWAY 290
FREDERICKSBURG, VICINITY, GILLESPIE COUNTY, TEXAS
UTM REFERENCE: 14 526160E 3343540N



Mapped, edited, and published by the Geological Survey

Control by USGS and USC&GS
Topography by photogrammetric methods from aerial photographs taken 1958. Field checked 1961
Polyconic projection. 1927 North American datum, 10,000-foot grid based on Texas coordinate system, central zone
1000-meter Universal Transverse Mercator grid ticks, zone 14, shown in blue
Fine red dashed lines indicate selected fence and field lines where generally visible on aerial photographs
This information is unchecked



ROAD CLASSIFICATION

Heavy-duty	Light-duty
Medium-duty	Unimproved dirt
U.S. Route	State Route



THIS MAP COMPLIES WITH NATIONAL MAP ACCURACY STANDARDS
FOR SALE BY U.S. GEOLOGICAL SURVEY, DENVER 25, COLORADO OR WASHINGTON 25, D.C.
A FOLDER DESCRIBING TOPOGRAPHIC MAPS AND SYMBOLS IS AVAILABLE ON REQUEST

STONEWALL, TEX.
N30075-W98375/7.5
1961
MINOR CORRECTIONS MADE 1964
AMS 6244 11 NW - SERIES V882

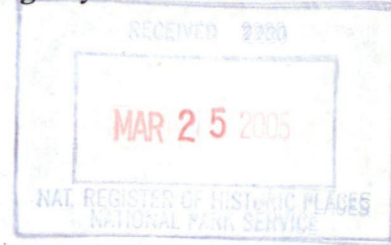
3098-213



TEXAS HISTORICAL COMMISSION

Rick Perry • Governor
John L. Nau, III • Chairman
F. Lawrence Oaks • Executive Director

The State Agency for Historic Preservation



TO: Carol Shull, Keeper
National Register of Historic Places

FROM: Gregory W. Smith, National Register Coordinator
Texas Historical Commission

RE: Lower South Grape Creek School, Fredericksburg vicinity, Gillespie County, Texas

DATE: March 25, 2005

The following materials are submitted regarding: Lower South Grape Creek School, Fredericksburg vicinity, Gillespie County, Texas

<input checked="" type="checkbox"/>	Original National Register of Historic Places form
<input type="checkbox"/>	Resubmitted nomination
<input type="checkbox"/>	Multiple Property nomination form
<input checked="" type="checkbox"/>	Photographs
<input checked="" type="checkbox"/>	USGS map
<input type="checkbox"/>	Correspondence
<input type="checkbox"/>	Other:

COMMENTS:

SHPO requests substantive review

The enclosed owner objections (do) (do not) constitute a majority of property owners

Other _____