

(Oct. 1990)

**United States Department of the Interior  
National Park Service**

**NATIONAL REGISTER OF HISTORIC PLACES  
REGISTRATION FORM**



**1. NAME OF PROPERTY**

**HISTORIC NAME:** Cottle County Courthouse Historic District  
**OTHER NAME/SITE NUMBER:** N/A

**2. LOCATION**

**STREET & NUMBER:** Roughly bounded by N. 7<sup>th</sup>, N. 10<sup>th</sup>, Garrett and Easy Streets

**NOT FOR PUBLICATION:** N/A

**CITY OR TOWN:** Paducah

**VICINITY:** N/A

**STATE:** Texas

**CODE:** TX

**COUNTY:** Cottle

**CODE:** 101

**ZIP CODE:** 79248

**3. STATE/FEDERAL AGENCY CERTIFICATION**

As the designated authority under the National Historic Preservation Act, as amended, I hereby certify that this ( nomination) ( request for determination of eligibility) meets the documentation standards for registering properties in the National Register of Historic Places and meets the procedural and professional requirements set forth in 36 CFR Part 60. In my opinion, the property ( meets) ( does not meet) the National Register criteria. I recommend that this property be considered significant ( nationally) ( statewide) ( locally). ( See continuation sheet for additional comments.)

*Lawrence Oaks*

Signature of certifying official

7 Jul 2004  
Date

State Historic Preservation Officer, Texas Historical Commission

State or Federal agency and bureau

In my opinion, the property  meets  does not meet the National Register criteria. ( See continuation sheet for additional comments.)

Signature of commenting or other official

Date

State or Federal agency and bureau

**4. NATIONAL PARK SERVICE CERTIFICATION**

I hereby certify that this property is:

entered in the National Register

See continuation sheet.

determined eligible for the National Register

See continuation sheet

determined not eligible for the National Register

removed from the National Register

other (explain):

*Wilson H. Beall*  
Signature of the Keeper

Date of Action

9/10/04

---

**5. CLASSIFICATION**

---

**OWNERSHIP OF PROPERTY:** Private, Public - local

**CATEGORY OF PROPERTY:** District

<b>NUMBER OF RESOURCES WITHIN PROPERTY:</b>	<b>CONTRIBUTING</b>	<b>NONCONTRIBUTING</b>
	40	13 <b>BUILDINGS</b>
	0	1 <b>SITES</b>
	7	2 <b>STRUCTURES</b>
	0	4 <b>OBJECTS</b>
	47	20 <b>TOTAL</b>

**NUMBER OF CONTRIBUTING RESOURCES PREVIOUSLY LISTED IN THE NATIONAL REGISTER:** 0

**NAME OF RELATED MULTIPLE PROPERTY LISTING:**

---

**6. FUNCTION OR USE**

---

**HISTORIC FUNCTIONS:** COMMERCE/business, financial institution, specialty store, department store, DOMESTIC/hotel, GOVERNMENT/courthouse, SOCIAL/meeting hall, RECREATION/theater

**CURRENT FUNCTIONS:** COMMERCE/business, VACANT/NOT IN USE, SOCIAL/meeting hall, GOVERNMENT/courthouse

---

**7. DESCRIPTION**

---

**ARCHITECTURAL CLASSIFICATION:** LATE 19<sup>TH</sup> AND 20<sup>TH</sup> CENTURY REVIVALS/Mediterranean Revival, Spanish Revival. LATE 19<sup>TH</sup> AND EARLY 20<sup>TH</sup> CENTURY AMERICAN MOVEMENTS/Commercial Style. MODERN MOVEMENT/Art Deco.

**MATERIALS:** FOUNDATION BRICK, CONCRETE  
WALLS BRICK, TERRA COTTA  
ROOF ASPHALT, CONCRETE, CERAMIC TILE  
OTHER GLASS, WOOD

**NARRATIVE DESCRIPTION** (see continuation sheets 7-5 through 7-17).

United States Department of the Interior  
National Park Service

## National Register of Historic Places Continuation Sheet

Section 7 Page 5

Cottle County Courthouse Historic District  
Paducah, Cottle County, Texas

The Cottle County Courthouse Historic District contains a high concentration of properties that represent significant aspects of the economic, physical, and architectural development of the city. With a spectacular Art Deco courthouse dominating the center of the square, the surrounding streets are lined with commercial buildings representing several phases in the economic and architectural development of the city. These commercial properties are typical of those found throughout the state and illustrate the development of commercial buildings from the early twentieth century to the Depression era. The majority of the properties are one-part commercial buildings constructed of brick, but representative examples of two-part commercial block buildings are also present. There are also examples of other types of buildings including a hotel, theater, VFW Hall, and courthouse. Although the earliest building dates to 1905, most of the properties date from two periods of major construction, 1908-1910 and 1928-1930. Most of the properties serve a commercial function, yet have received few alterations over the years. Such changes illustrate the physical evolution of buildings within the business district and reflect the changing nature of commerce throughout the early decades of the twentieth century. Contributing properties, retain a high level of character-defining features to convey a visual sense of the historic environment. The Cottle County Courthouse Historic District (see map) is composed of 67 properties and features of which 47 are contributing and 20 are noncontributing. This district includes 53 buildings, 4 objects, 9 structures, and 1 site. The Cottle County Courthouse Historic District retains sufficient integrity for listing in the National Register of Historic Places (NRHP) under Criterion A in the areas of Commerce and Community Planning and Development, and under Criterion C in the area of Architecture, both at the local level of significance. There are no properties currently listed in the NRHP.

### Setting of the Cottle County Courthouse Square Historic District

The city of Paducah is sited at the center of Cottle County along a branch of Salt Creek. Located midway between Lubbock and Wichita Falls, it lies within the rolling prairie of northwest Texas, below the High Plains. The Cottle County Courthouse Historic District is located at the center of the original town plan. The 1929-30 Art Deco courthouse dominates the square both by its architectural form and by its setting within the central block. Selected as the county seat in 1892, the plan for the city's core utilized the Shelbyville Square plan, the most common layout for county seats in Texas during this period, wherein the courthouse square is flanked on each side by a principal street. The courthouse is bounded by Backus Street on the north, Richards Street on the south, 9<sup>th</sup> Street on the west and 8<sup>th</sup> Street on the east. As is common for county seats, the courthouse square became the hub of the transportation network through town as the major highways in Paducah intersected near the courthouse square. US Highway 83 follows 9<sup>th</sup> Street along the west side of the courthouse while US Highway 70 intersects along Easley Street, just one block south of the courthouse. Paducah boosters claim it is the only city in the United States where two border-to-border highways intersect, and since the 1920s Paducah has called itself the "Crossroads of America." The Quanah, Acme and Pacific Railroad arrived in 1909 and the tracks are located a short distance to the north of the downtown area. The Cottle County Jail is located one block to the east along 7<sup>th</sup> Street.<sup>1</sup>

<sup>1</sup> The jail was previously sited on 9<sup>th</sup> Street, one block north of the courthouse at the site of the VFW Hall.

United States Department of the Interior  
National Park Service

## National Register of Historic Places Continuation Sheet

Section 7 Page 6

Cottle County Courthouse Historic District  
Paducah, Cottle County, Texas

Commercial buildings surround the courthouse on all four sides of the square and extend one block to the north and south along 9<sup>th</sup> Street as well as one block to the north along 8<sup>th</sup> Street. The proposed district also includes the 800 block of N. 7<sup>th</sup> Street, one block east of the courthouse square. One-part commercial block buildings predominate, although two-part commercial block buildings are represented. Two-part commercial block buildings tend to be located at prominent corners and most feature a corner entrance. The commercial buildings define the outer perimeter of the courthouse square and uniformly line the sidewalks. Some blocks of the district do contain narrow, vacant lots once occupied by buildings, but these in no way disrupt the overall rhythm of the courthouse square. The consistent use of the one-part and two-part commercial block typology presents a similarity in massing and fenestration pattern throughout the district. These commercial buildings form a backdrop to the courthouse square and define the open green space of the courthouse. As a result, the Cottle County Courthouse Historic District still maintains the appearance, feeling and setting of a typical courthouse square in Texas.

The earliest surviving residential district in the city lies to the west of the downtown area. Many of the town's prosperous merchants and businessmen constructed large homes in these neighborhoods, many of which still survive today and are potentially eligible for listing in the National Register of Historic Places. Other historic dwellings are scattered east and south of the courthouse square, though lacking the continuity of a potential district. Some historic resources survive to the north, primarily buildings associated with commerce and the rail industry, such as the depot and various industrial buildings associated with agriculture.

### Physical Characteristics of the District

The Cottle County Courthouse dominates the district in its central location on the square. Designed by the Wichita Falls firm Voelcker and Dixon in 1929-30, the four-story Art Deco courthouse looms over the rest of the buildings around the square. This building replaced an 1894 Italianate courthouse. As the site of county government, the location of the courthouse gave impetus to the commercial development around the courthouse square. These commercial buildings were at first of frame construction, but beginning in 1905 they were replaced with permanent brick structures. One of the earliest extant buildings is the Hall Scruggs and Company dry goods store (Property 4, built 1905) at 724 North 9<sup>th</sup> Street.

As a result of the local economic prosperity of the early decades of the twentieth century, the commercial district surrounding the courthouse square best represents the first three decades of the twentieth century. The commercial development of Paducah naturally focused on the courthouse, located within the center of the courthouse square. Most of the buildings within the district were built between 1910 and 1930. The north and west sides of the courthouse developed first, with the south side of the square filled in by the mid-1920s. The east side of the square developed last, primarily in the late 1920s and early 1930s. The decline of Paducah's economic prosperity resulted in a high level of integrity of the majority of the resources, as few alterations were made in subsequent years. In addition to commercial buildings, the courthouse square also features a theater, hotel, lumberyard, and a Veterans of Foreign Wars hall. Except for the theater, these other building types tend to be located along the edges of the district that extend northward.

United States Department of the Interior  
National Park Service

## National Register of Historic Places Continuation Sheet

Section 7 Page 7

Cottle County Courthouse Historic District  
Paducah, Cottle County, Texas

The district is comprised primarily of one-part commercial block buildings, interspersed with an adequate representation of two-part commercial blocks. The two-part commercial buildings tend to be located at prominent corners, and most feature a corner entrance. Only one of these survives wholly intact, however (Property 32). All of the buildings are constructed of brick, except for one wooden structure (Property 14, 1915) at 916-918 South 9<sup>th</sup> Street. While a buff colored brick is most common, red and brown brick are also utilized. An outstanding feature of the district is the representation of decorative brickwork within the parapets of the vast majority of the buildings. The most common alterations to buildings are a modernization of the storefront, most commonly the use of aluminum frame plate glass windows, the application of a modern material to the kick plates or ground floor surrounding the area around the storefront, or the covering of transoms. As many of these modifications are more than fifty years old and yield important information on the historical evolution of commerce in Paducah, such alterations to the facades are considered contributing to the district. Slip covered buildings, representing a popular trend starting in the 1960s, are considered noncontributing to the district since their character-defining features are no longer apparent. Some buildings along the west side of the square received a stucco application to their exteriors. According to photographic evidence, this occurred before 1949.

The west side of the courthouse square (9<sup>th</sup> Street) is comprised primarily of one-part commercial block buildings bracketed by two-part commercial block buildings at either end. Only two of the historic buildings along this block are noncontributing (816 and 818 North 9<sup>th</sup> ; Properties 9 and 10) due to major alterations to their storefronts and transoms. Two of the contributing buildings (810 and 812 North 9<sup>th</sup> ; Properties 7 and 8) received a stucco application over their brick facades in addition to modernization of the storefronts with Carrara glass, but these alterations are documented to be within the historic period. While most of the buildings date between 1910 and 1915, the two-part commercial building at 806-808 North 9<sup>th</sup> (Property 6) was constructed in 1930 and is representative of the Mediterranean Revival style. One of the few modern intrusions (Heatly Building) anchors the southwest corner at Backus Street. This modern building is constructed of buff brick with two aluminum doors and no windows. Although it fails to continue the rhythm and massing of the historic buildings, it is sited along the same building line and represents a single contemporary intrusion along a three-block stretch of historic buildings. The block as a whole retains the overall feeling, association and setting of the historic period it represents.

The commercial development of the west side of the courthouse square continued both one block north and one block south. This development along several blocks beyond the immediate courthouse square occurred because 9<sup>th</sup> Street also serves as US Highway 83, a major transportation route. All of these buildings are one-part commercial blocks except for the bank building on the northwest corner (Property 5). The block along North 9<sup>th</sup> Street to the north contains one of the earliest buildings at 724 North 9<sup>th</sup> (Property 4), constructed in 1905. This building, along with the bank (Property 5, 1911) and the lumberyard (Property 1, 1915), indicate this commercial extension of the courthouse square occurred at an early date. The remaining buildings date from 1925 to 1930. The contributing, one-part commercial block buildings on the west side of the block retain a high degree of integrity evidenced by their original recessed entries, transoms, and wood moldings for the storefront

United States Department of the Interior  
National Park Service

## National Register of Historic Places Continuation Sheet

Section 7 Page 8

Cottle County Courthouse Historic District  
Paducah, Cottle County, Texas

windows. Several of these buildings, however, are in fair condition. There are several vacant lots along this block on the west side due to the demolition of such deteriorated structures.

The southern extension of South 9<sup>th</sup> Street is composed entirely of one-part commercial block buildings, all of which are contributing to the district. These buildings, constructed between 1915 and 1925, line the west side of the street. All have experienced some minor alterations to the storefronts, from the boarding of transoms to the installation of aluminum plate glass windows and doors. The front façade of the building at 912-914 South 9<sup>th</sup> (Property 13) is clad in a white tile that imitates stone, an unusual treatment for a building in this area. Although these buildings have experienced minor alterations, they convey the same scale, setback, massing and function as the other buildings in the district. A vacant lot adjacent to 912-914 South 9<sup>th</sup> was previously occupied by a 1910s theater that was demolished in 1985. The east side of the street is currently a parking lot with no surviving buildings.

The north side of the courthouse square fronts Backus Street and is composed of a uniform row of one-part commercial block buildings with a two-part commercial building on the northwest corner at North 9<sup>th</sup> Street. The entire block was constructed before 1921. The contributing buildings retain a high degree of historic integrity including their original fenestration patterns, architectural detailing and even examples of the original recessed storefronts with wood window moldings and original doors. The most common alteration is boarded transoms with several buildings featuring modern aluminum windows. Two buildings are noncontributing (820 and 808 Backus; Properties 33 and 39) due to a contemporary infilling of the storefront with incompatible materials. The buildings in this block, like others in the district, feature significant decorative brickwork in the parapets including dogtooth brickwork, corbelled cornices, checkered brickwork, and shaped parapets. The block retains its overall massing, rhythm, design, and architectural features in addition to integrity of feeling, association, setting, design and workmanship.

The south side of the courthouse square along Richards Street contains four one-part commercial block buildings interspersed with two two-part commercial blocks. All of the buildings but one are contributing resources. Although some of these buildings have received alterations to their storefronts, including the installation of new windows and aluminum framed glass doors (as in 817 and 813 Richards; Properties 42 and 44), these buildings convey the same scale, setback, massing and function as the other buildings in the district. Several of the buildings along this block still maintain their original recessed entries and transoms. A small urban park is located at the eastern corner.

The east side of the courthouse square faces North 8<sup>th</sup> Street and was the last block of the courthouse square to be fully developed. The buildings, constructed between 1928 and 1930, replaced a series of frame buildings that once dotted the block. The entire block is made up of contributing historic buildings with a representation of both one-part and two-part commercial block buildings. The Palace Theatre (Property 31, 1930), located at 815-817 North 8<sup>th</sup> Street, contains architectural features characteristic of the Spanish Revival style, including a tile roof and arched windows. The Paducah Post Building (819 North 8<sup>th</sup>; Property 32) is the only corner building with a surviving recessed corner entry. Although its windows are currently boarded, the original wood

United States Department of the Interior  
National Park Service

## National Register of Historic Places Continuation Sheet

Section 7 Page 9

Cottle County Courthouse Historic District  
Paducah, Cottle County, Texas

windows are still in place. Except for the architectural flourishes on the Palace Theatre, most of the buildings along this block have more simplified architectural ornament than the earlier buildings around the courthouse square.

Commercial development occurred along the block of North 8<sup>th</sup> Street just north of the courthouse square during the mid-1920s. Most of this development occurred along the west side of the block as the east side was occupied primarily by the county jail (the site is now occupied by the VFW Hall, Property 27). All but one of these buildings are one-part commercial block buildings and they retain sufficient integrity of feeling, association, setting and design for the period of significance. The block retains its overall massing, rhythm, design and architectural features to be contributing to the district. The sole two-part commercial block building at 706-708 North 8<sup>th</sup> (Property 22) was recently burned and has lost the upper part of its parapet and its roof. Although it retains its original recessed storefront with wood moldings, it is in an advanced state of deterioration. There is one vacant lot to the south of this building where a building was destroyed by fire. The Cottle Hotel (Property 41), constructed in 1929-30, is an outstanding example of a rural downtown hotel of the period in Texas. Although it is currently vacant, it retains all of its architectural features except for the awning over the hotel entrance.

The construction of a new county courthouse in 1929-30 was the last major construction project within the courthouse square. Designed by the architectural firm of Voelcker and Dixon, the construction of the third courthouse for Cottle County began in 1929 and was completed by 1930. The building is an outstanding example of the Art Deco style among Texas courthouses. A central mass rises four stories from the center of the building. The primary facades on the north and south feature stepped pavilions with monumental, arched entries flanked by massive buttresses. Stylized representations of symbolic figures, eagles perched at each corner, multiple ornamental friezes, and inspiring quotations provide a level of ornamentation uncommon to many rural courthouses. Secondary entrances face 8<sup>th</sup> and 9<sup>th</sup> Streets. The Cottle County Courthouse has received very few alterations over the years.

The courthouse grounds are sparsely landscaped with trees and shrubs. The grounds of the courthouse contain a commemorative monument to the county's pioneers, constructed in 1992 and located on the west side of the courthouse (Property 20c, noncontributing). The base of a monument to state representative Heatly (Property 20a, 1975) is located towards the southwest corner, but is missing its bronze bust. In addition, there are two historical markers (Properties 20b and 20d, 1965) on the grounds and a permanent podium of brick (Property 20e, post-1955) near the northwestern corner. A perimeter sidewalk (Property 20f) surrounds the exterior boundary of the courthouse lawn with additional sidewalks leading to each of the four entries. A stone retaining wall (Property 20g, 1931) also surrounds the outer edge of the lawn. Parking around the courthouse square features traditional head-in parking along both sides of the street, except along the western edge of 9<sup>th</sup> Street where only parallel parking is permitted along one side of US Highway 83.

Two contemporary buildings are located within the proposed district, but they do not significantly detract from the historical character. The Heatly Building, a county annex, is located at the northwest corner of North 9<sup>th</sup>

United States Department of the Interior  
National Park Service

## National Register of Historic Places Continuation Sheet

Section 7 Page 10

Cottle County Courthouse Historic District  
Paducah, Cottle County, Texas

Street and Backus Street. A one-story brick box with no windows, it does not retain the same massing and rhythm of the historic buildings. It is sited, however, to continue the building line of the block. The least sympathetic addition is located on the opposite side of the courthouse square at the intersection of North 8<sup>th</sup> Street and Backus Street. A long rectangular building of cinder block construction is set well back from the sidewalk. These buildings, however, do not adversely impact the overall scale and rhythm of the courthouse square. A small urban park is located on the south side of the courthouse square at the southwest corner of Richards at South 8<sup>th</sup> Street. Carlock Memorial Park contains benches and covered picnic tables. Although it represents a vacant area within the courthouse square, it does not significantly detract from the district as a whole.

One block to the east of the courthouse square, along the 800 block of North Seventh Street, are two buildings with a strong association with Community Planning and Development. The Jail Building (Property 54, 1922), a two story brick building, is still owned by the county although it is no longer in use as a jail. It maintains a high degree of integrity and is integral to the understanding of the development of the courthouse square. To the north of this jail is the former West Texas Utilities Building (Property 53, 1930). Built of concrete, it features steel casement windows and ornamental flourishes on the front elevation. Although currently used for storage, it played an important role in the development of essential services to the city during the early 20<sup>th</sup> century.

With the economic slowdown in Paducah that has persisted since the Depression, the existing buildings escaped major alterations for many years and examples of past building styles were preserved, forming a nearly continuous string of buildings along all sides of the courthouse square from the frenetic building activity of the early 20<sup>th</sup> century. Following World War II, the streetscape received minor alterations, primarily the use of on-street angled parking and the disappearance of the continuous canopies that sheltered the sidewalks and provided additional visual cohesiveness. As the economic vitality of the downtown area waned, it caused an increase in vacancies and a shift in the use of buildings. Today the majority of the buildings surrounding the courthouse square are vacant.

Contributing properties include those that add to the district's overall historic character. Contributing properties are generally at least 50 years of age and need not be unaltered. The buildings must, however, retain sufficient integrity to be recognizable to the district's period of significance. The buildings should retain a majority of their historic architectural materials and details and be able to convey the significance of the period. A contributing property, however, need not be unaltered to be included as it is common for commercial buildings to have received some alterations in order to accommodate changes in marketing and use of the buildings over the years. Examples of such changes might be alteration of storefront windows to increase the visibility of merchandise or the installation of aluminum doors for original wooden ones. If there are several such changes, and they obscure the original form, massing or overall appearance of the building, such a property can no longer be considered contributing to the district.

Noncontributing properties are those that detract from the district's historic character and appearance. These properties may be of recent construction or be historic buildings that possess little or no architectural or historic

United States Department of the Interior  
National Park Service

## National Register of Historic Places Continuation Sheet

Section 7 Page 11

Cottle County Courthouse Historic District  
Paducah, Cottle County, Texas

---

significance that relate to the district or have experienced such drastic alterations that the original building is unrecognizable. These properties commonly have been severely altered through multiple changes, resulting in a modification of their original form, massing and overall appearance. A common type of major alteration would be the slip covering of a building with an aluminum storefront or the radical alteration of a building's façade.

The survey of the district in Paducah identified 67 pre-1955 historic resources (see table). The survey confirmed 47 of these resources to be contributing to a potential historic district around the courthouse square. Only 20 resources were considered noncontributing properties. With 70 percent of the resources contributing to a potential NRHP historic district, and with very little contemporary infill, the district retains a high degree of integrity. Among buildings, 40 of 53 (75 percent) in the district are considered contributing.

United States Department of the Interior  
National Park Service

National Register of Historic Places  
Continuation Sheet

Cottle County Courthouse Historic District  
Paducah, Cottle County, Texas

Section 7 Page 12

Inventory of Historic Resources, Cottle County Courthouse Historic District

Property No.	Address/Historic Name	Building Type	Building Sub-Type	Stylistic Influence	Date	NR C/NC
1	700 blk N. 9 <sup>th</sup>	Two-Part Commercial	lumberyard	vernacular	1915	Contributing
1a	700 blk N. 9 <sup>th</sup>	Structure	lumberyard	vernacular	1930	Contributing
1b	900 blk Garrett	Structure	lumberyard	vernacular	1930	Contributing
2	700 blk N. 9 <sup>th</sup>	One-Part Commercial	retail	vernacular	1925	Contributing
3	714 N. 9 <sup>th</sup>	One-Part Commercial	retail	vernacular	1925	Noncontributing
4	724 N. 9 <sup>th</sup> Hall, Scruggs & Co.	One-Part Commercial	retail	vernacular	1905	Contributing
5	700 blk N. 9 <sup>th</sup>	Two-Part Commercial	bank	Classical Revival	1911	Contributing
6	[806-808] N. 9 <sup>th</sup>	Two-Part Commercial	unknown	Mediterranean Revival	1930	Contributing
7	[810] N. 9 <sup>th</sup>	One-Part Commercial	retail	vernacular	1915/1950	Contributing
8	812 N. 9 <sup>th</sup> Hall, Scruggs & Co.	One-Part Commercial	retail	vernacular	1915/1945	Contributing
9	816 N. 9 <sup>th</sup>	One-Part Commercial	retail	vernacular	1914	Noncontributing
10	[818] N. 9 <sup>th</sup>	One-Part Commercial	retail	vernacular	1915	Noncontributing
11	[820] N. 9 <sup>th</sup> First State Bank	Two-Part Commercial	bank	Classical Revival	1912	Contributing
12	900 blk S. 9 <sup>th</sup>	One-Part Commercial	retail	vernacular	1930	Contributing
13	912-914 S. 9 <sup>th</sup>	One-Part Commercial	retail	vernacular	1925	Contributing
14	916-918 S. 9 <sup>th</sup>	One-Part Commercial	retail	vernacular	1915	Noncontributing
15	920-922 S. 9 <sup>th</sup>	One-Part Commercial	retail	vernacular	1925	Contributing
16	700 blk N. 9 <sup>th</sup>	One-Part Commercial	retail	vernacular	1925	Contributing
17	700 blk N. 9 <sup>th</sup>	One-Part Commercial	retail	vernacular	1925	Noncontributing
18	700 blk N. 9 <sup>th</sup>	One-Part Commercial	retail	vernacular	1925	Noncontributing
19	700 blk N. 9 <sup>th</sup>	One-Part Commercial	retail	vernacular	1930	Contributing
20	Courthouse Square	Building: government	courthouse	Art Deco	1930	Contributing
20a	Courthouse Square	Object	Monument	None	1975	Noncontributing
20b	Courthouse Square	Object	Historical marker	None	1965	Noncontributing
20c	Courthouse Square	Object	Monument	None	1992	Noncontributing
20d	Courthouse Square	Object	Historical marker	None	1965	Noncontributing
20e	Courthouse Square	Structure	Podium	None	Post-1955	Noncontributing
20f	Courthouse Square	Structure: landscape	Sidewalks	None	1910/1930	Contributing
20g	Courthouse Square	Structure: landscape	Terrace walls	None	1931	Contributing
21	[704] N. 8 <sup>th</sup>	One-part commercial	Retail	Vernacular	1930	Contributing
22	706-708 N. 8 <sup>th</sup>	Two-part commercial	Retail	Vernacular	1930	Noncontributing
23	700 blk N. 8 <sup>th</sup>	One-part commercial	Retail	Vernacular	1925	Contributing
24	700 blk N. 8 <sup>th</sup>	One-part commercial	Retail	Vernacular	1925	Contributing
25	900 blk S. 8 <sup>th</sup>	One-part Commercial	Quonset hut	vernacular	1945	Noncontributing

United States Department of the Interior  
National Park Service

# National Register of Historic Places Continuation Sheet

Cottle County Courthouse Historic District  
Paducah, Cottle County, Texas

Section 7 Page 13

Property No.	Address/Historic Name	Building Type	Building Sub-Type	Stylistic Influence	Date	NR C/NC
26	700 blk Easley	Gas station	Box with canopy	none	1950	Contributing
27	700 blk N. 8 <sup>th</sup>	Institutional	VFW Hall	none	1946	Contributing
28	809 N. 8th	Two-Part Commercial	retail	vernacular	1930	Contributing
29	[811] N. 8th	One-Part Commercial	retail	vernacular	1930	Contributing
30	[813] N. 8 <sup>th</sup>	One-Part Commercial	retail/cafe	Spanish Revival	1930	Contributing
31	815-817 N. 8 <sup>th</sup>	Two-Part Commercial	theatre	Spanish Revival	1930	Contributing
32	819 N. 8 <sup>th</sup>	Two-Part Commercial	newspaper office	vernacular	1928	Contributing
33	820 Backus Old Masonic Lodge	Two-Part Commercial	retail/lodge	vernacular	1910	Noncontributing
34	[818] Backus Jordan Building	One-Part Commercial	retail	vernacular	1920	Contributing
35	816 Backus	One-Part Commercial	retail	vernacular	1920	Contributing
36	814 Backus	One-Part Commercial	retail	vernacular	1920	Contributing
37	[812] Backus	One-Part Commercial	retail	vernacular	1915	Contributing
38	[810] Backus	One-Part Commercial	retail	vernacular	1915	Contributing
39	808 Backus	One-Part Commercial	retail	vernacular	1920	Noncontributing
40	802-806 Backus J. E. Norris & Co.	One-Part Commercial	retail	vernacular	1920	Contributing
41	710-720 Backus	Two-Part Commercial	hotel	vernacular	1929	Contributing
42	[817] Richards Isbell Drug Co.	Two-Part Commercial	retail	vernacular	1910	Contributing
43	815 Richards	One-Part Commercial	retail	vernacular	1920	Contributing
44	[813] Richards	One-Part Commercial	retail	vernacular	1920	Noncontributing
45	[809-811] Richards	One-Part Commercial	retail	vernacular	1915	Contributing
46	[807] Richards	Two-Part Commercial	retail	vernacular	1920	Contributing
47	[805] Richards	One-Part Commercial	retail	vernacular	1925	Contributing
48	700 blk N. 8 <sup>th</sup> and 700 blk Garrett	Structure	brick street	NA	1928-29	Contributing
49	700 block Backus	Structure	brick street	NA	1928-29	Contributing
50	700 block Richards	Structure	brick street	NA	1928-29	Contributing
51	800 blk N. 9 <sup>th</sup>	One-Part Commercial	office	contemporary	1975	Noncontributing
52	800 blk N. 8 <sup>th</sup>	One-Part Commercial	auto repair	none	1970	Noncontributing
53	800 blk N. 7 <sup>th</sup>	Building	electric utility	Art Deco	1930	Contributing
54	800 blk N. 7 <sup>th</sup>	Building: government	jail	Romanesque	1922	Contributing
55	800 blk N. 7th	Structure	shed	NA	1980	Noncontributing
56	800 blk Richards Carlock Mem. Park	Site: designed landscape	urban park	NA	1980	Noncontributing
57	M. R. Blake Bldg.	building		none	1920	Contributing
58	Drummond Lumber	building		none	1920	Contributing

United States Department of the Interior  
National Park ServiceNational Register of Historic Places  
Continuation SheetSection 7 Page 14Cottle County Courthouse Historic District  
Paducah, Cottle County, Texas

## Representative Properties

**Property 4**                      **724 N. 9<sup>th</sup> Street**                      **Carl Darr saddle shop**                      **1905**                      **contributing**

This building was first used as a hardware store, and for many years was Carl Dorr's saddle shop. The last business to occupy the building was Clyde Mathis' television repair shop. The building is a one-part commercial block, with tan-colored facing brick. Vertical glass transoms divide the façade horizontally, with the remnant of a horizontal awning connection immediately below the transom. Large panel glass was installed in the storefronts circa 1940. The wooden entry and screen doors appear to be original. Above the transoms, brick detailing includes a horizontal course that projects from the façade, three sections of corbelling that also project, a recessed octagonal shape and a crenellated parapet. The escutcheons and hooks for the former awning are also still present.

**Property 5**                      **700 block N. 9<sup>th</sup> Street**                      **First National Bank**                      **1911**                      **contributing**

Constructed in 1911, this building housed the First National Bank downstairs and professional offices upstairs, including lawyers such as Clifford Graves and J. Ross Bell, and doctors such as Dr. Alexander. The building currently houses a local office of the Texas Department of Human Services. This two-part commercial block occupies a prominent corner location, at the northwest corner of North Ninth and Backus Streets and directly northwest of the Cottle County Courthouse. The building is faced with buff brick and stucco coping. Three vertical pilasters divide the narrow Ninth Street façade into two bays, while ten pilasters along the long Backus Street elevation mark nine bays on the upper floors, with a total of thirteen windows below. A stone vertical course divides the first and second stories, and matches stone lintels beneath the windows. Currently the upper story windows and transoms on the lower story are covered with corrugated metal, but the windows are intact underneath. Above the second story windows, brick and stone detailing includes a sawtooth pattern and corbelling, as well as stone placards that read "BANK" and "1911." The corner entry was altered circa 1940, with a maroon-colored Art Deco-style marble and plaster door surround and the installation of aluminum doors. These alterations date from the period of significance for the district, and do not significantly detract from the overall architectural integrity of this historic building.

**Property 6**                      **806-808 N. 9<sup>th</sup> Street**                      **Paducah Drug Company**                      **1930**                      **contributing**

This distinctive Mediterranean Revival-style two-story commercial block was built in 1930 by contractor A. E. Sneed. It was built as the new home of the Paducah Drug Company, and served most of its years as a drug store, including Linley Drug and Coleman Drug for many years. The upper floor housed professional offices, such as real estate, insurance and doctors' and dentists' offices. Currently the building is home to Motley County Abstract and W. H. Heatly's law office. The building is faced with buff brick, and multi-light window panes that are currently painted white are above the eyebrow-arch awning. The storefront level is intact from its original construction, featuring single large-pane doors on either side of a central glass panel. On the left is a large glass panel above a wooden kick plate, and on the right is a smaller vertical pane and kick plate adjacent to a door that provides access to the second floor space. A suspended awning is still in place, with a curved central section flanked by two horizontal sections. Above the awning, a large transom area is divided into a central section divided into 12 x 4 lights, flanked by two sections divided into 6 x 4 lights and curved upper

United States Department of the Interior  
National Park Service

# National Register of Historic Places Continuation Sheet

Cottle County Courthouse Historic District  
Paducah, Cottle County, Texas

Section 7 Page 15

corners. On the upper floor, two rounded multi-light transoms sit above 8/8 double-hung wood windows on the left and right of a central bay with two 6 x 3 transoms over 6/6 windows. Projecting brick pilasters divide the second floor façade into three bays. Stylized octagonal shapes at the top of each pilaster are capped with stones, a green tile roofline at the parapet, and a Mission-style central parapet feature with a small stone niche. Additional brick detailing is found outlining the pilasters, windows, sills and first floor entry.

**Property 20**                      **courthouse square**                      **Cottle County Courthouse 1930**                      **contributing**

The Cottle County Courthouse rises four stories within a rectangular mass at the core of the building from which projects a series of stepped building blocks. Although the courthouse is entered from all sides, the main façade faces south. This main entrance features a large, stepped wing that projects from the central block and is framed by flanking, two story pavilions. A large arched window over the entry is flanked by stepped pylons serving almost as buttresses. From these pylons emerge two stylized figures representing justice and liberty. An inscription between them reads: "TO NO ONE WILL WE SELL, DENY, OR DELAY JUSTICE." Other inscriptions on the courthouse include "HE WHO SEEKS EQUITY MUST DO EQUITY," "HE WHO COMES HERE MUST COME WITH CLEAN HANDS," and "THERE IS NOTHING AS POWERFUL AS THE TRUTH." A cast stone frieze containing emblems of the Texas star, sunflower, acorn, and stylized leaf runs around the top of each of these projecting masses. The north façade is similar to this but without a more simplified design and less ornamentation. The east and west facades feature a one-story projecting pavilion with an entrance directly into the main four-story block of the building. Each façade features a different inspirational inscription. One writer for the Fort Worth Press remarked that "other courthouses are more handsome, have more architectural character, possess more beautiful grounds. Somehow I don't remember them so much because that tall old building at Paducah with its fine inscriptions haunts me."<sup>2</sup>

Some scholars attribute aspects of the stepped-back massing in the Cottle County Courthouse to the influence of Eliel Saarinen's designs for the Finnish Parliament (1907) and the Helsinki Railroad Station (1904-1914).<sup>3</sup> But perhaps it is a design technique Voelcker and Dixon became exposed to during their work as associate architects on the Wichita Falls City Hall and Auditorium (1927), designed by Lang and Witchell. Although the Wichita Falls City Hall is cloaked in a Spanish Colonial Revival style, it utilizes the same type of tall, central block from which smaller masses project forward to create a more visually interesting and dynamic composition. Indeed, it has more in common with the Eastland County Courthouse (1928), also designed by Lang and Witchell, which Voelcker and Dixon may have been aware of during their association with the Dallas architectural firm on the Wichita Falls project. This was a common device utilized by architects during the period to add visual variety to an otherwise monolithic composition.

**Property 22**                      **706-708 N. 8<sup>th</sup> Street**                      **furniture store**                      **1930**                      **noncontributing**

This building was first a furniture store, and later housed small businesses such as a tin shop, with apartments upstairs. It is a two-part commercial block, with red, gray and black brick. The building suffered a fire a few

<sup>2</sup> Fort Worth Press clipping, n.d., article by Walter R. Humphrey, quoted in Bennett 256.

<sup>3</sup> Henry 198.

United States Department of the Interior  
National Park Service

## National Register of Historic Places Continuation Sheet

Section 7 Page 16Cottle County Courthouse Historic District  
Paducah, Cottle County, Texas

years ago, and is lacking a roof, windows and doors and is in fair condition. Wood frames of doors, transoms, and storefront windows remain, and all but a few panes of glass are missing. Because so much of the historic fabric is missing, this building is classified as noncontributing in this nomination, although if restored under the Secretary of the Interior's Standards its status could change in the future.

**Property 27**                      **700 block N. 8<sup>th</sup> Street**                      **V.F.W. Hall**                      **1946**                      **contributing**  
Local chapters of the American Legion and Veterans of Foreign Wars combined to build this facility, which was built with private donations. The V.F.W. Post is named in honor of Vernon M. Matney, the first Cottle County boy reported killed in World War II. Matney's remains are entombed in the Battleship *U.S.S. Arizona* at Pearl Harbor. The building is on the former site of the county jail, and stones from that 1890s building are used in the foundation and exterior walls.

In smaller communities, such institutional and fraternal buildings often parallel the design of rural schools. One and two room schools were primarily meeting spaces, so their design is well-adapted for the communal purposes of fraternal organizations requiring a large open space for meetings. They are often rectangular in plan with a gabled or hipped roof, like the VFW Hall in Paducah. A cross-gable entry and canopy project from this rectangular plan building faced with buff brick. Two windows flank either side of the entry pavilion, with a circular window above in the peak of the gable. Paired windows are found on either side of the entry on the main floor level, with corresponding basement level windows below. Stylized brick quoins are found on the long ends of the hall.

**Property 31**                      **815-817 N. 8<sup>th</sup> Street**                      **Palace Theater**                      **1930**                      **contributing**  
Built in 1930 to house a theater and small shops, H. R. Simpson was the first owner of Palace Theater, followed by Red Leathers and Deward Gregory. In early years, a barber shop operated on the south (right) side of the theater entrance, with a millinery shop on the north (left) side. Later alterations to the storefront entrances include aluminum storefront windows and doors, but these alterations date from the historic period and do not significantly detract from the historic character of the building.

Divided into three main sections, the central theater entrance of this building is flanked by two small shop entrances. The theater entrance currently consists of an aluminum door with simple transom flanked by large storefront panes divided vertically. The shop to the north (left) has an aluminum door entry that is currently boarded up. The shop to the south (right) continues as a barber shop, with an aluminum door and two large glass storefronts with wooden surrounds and kick plates. A wooden awning is suspended by metal cables and runs the length of the building. The lighted theater marquis is also present. The upper floors feature interesting brick details and features inspired by Spanish Revival or Mediterranean Revival architecture. Three rounded windows are aligned in the central section, and bricks form sprung arches above. Higher up, a row of red bricks with stylized dentils, two small vertical columns and a sunburst pattern are features of a stepped central parapet. The central section is flanked by two Spanish tile roof sections, with metal window frames divided horizontally into five light panes. The brick, window and tile details of the Palace Theater form a distinctive architectural presence on the east side of the courthouse.

United States Department of the Interior  
National Park Service

## National Register of Historic Places Continuation Sheet

Section 7 Page 17

Cottle County Courthouse Historic District  
Paducah, Cottle County, Texas

**Property 33                      820 Backus                      Masonic lodge                      1900                      noncontributing**

The exact date of construction of the Masonic Lodge or Brothers Building is unknown, but Lodge #868 of Paducah was formed on the upper floor in 1903. Other social groups such as the Pythian Sisters also met upstairs, while the lower floor was occupied by G. C. Probasco Grocery for many years. The building is currently vacant. It is prominently sited at the northeast corner of North Ninth Street and Backus Street, facing the courthouse. The building's first floor façade received an incompatible brick façade and aluminum door entry circa 1980 which renders the building noncontributing to this nomination. Historic finishes include a buff brick exterior, a sawtooth design and corbelling, as well as a Masonic emblem. Other alterations, such as a stucco finish and removal of historic windows, have altered the historic appearance and leave the building noncontributing in this nomination. If restored under the Secretary of the Interior's Standards its status could change in the future.

**Properties 48-50                      700 blocks N. 8<sup>th</sup>, Garrett, Backus and Richards brick streets                      1928-29  
contributing**

Brick streets in Paducah contribute to the overall historic fabric and visual interest of the commercial district. Paving with brick streets was considered another progressive milestone for a city or town, and many of the towns of northwest Texas, which generally experienced their greatest growth in the early 20<sup>th</sup> century, paved their downtown streets with bricks during this period. The majority of paving bricks came from Thurber, Texas, a company town owned by the Texas and Pacific Coal and Oil Company located approximately 140 miles southeast of Paducah in Erath County. The Texas and Pacific Coal and Oil Company also owned the Thurber Brick Company, which was the largest of its kind in the state and contributed to the peak population of Thurber at 10,000, making it the largest city between Fort Worth and El Paso. Research has not proven the definitive origin of Paducah's paving bricks, but evidence strongly points to Thurber.

---

**8. STATEMENT OF SIGNIFICANCE**

---

**APPLICABLE NATIONAL REGISTER CRITERIA**

- A** PROPERTY IS ASSOCIATED WITH EVENTS THAT HAVE MADE A SIGNIFICANT CONTRIBUTION TO THE BROAD PATTERNS OF OUR HISTORY.
- B** PROPERTY IS ASSOCIATED WITH THE LIVES OF PERSONS SIGNIFICANT IN OUR PAST.
- C** PROPERTY EMBODIES THE DISTINCTIVE CHARACTERISTICS OF A TYPE, PERIOD, OR METHOD OF CONSTRUCTION OR REPRESENTS THE WORK OF A MASTER, OR POSSESSES HIGH ARTISTIC VALUE, OR REPRESENTS A SIGNIFICANT AND DISTINGUISHABLE ENTITY WHOSE COMPONENTS LACK INDIVIDUAL DISTINCTION.
- D** PROPERTY HAS YIELDED, OR IS LIKELY TO YIELD, INFORMATION IMPORTANT IN PREHISTORY OR HISTORY.

**CRITERIA CONSIDERATIONS:** N/A

**AREAS OF SIGNIFICANCE:** COMMERCE, COMMUNITY PLANNING AND DEVELOPMENT,  
ARCHITECTURE

**PERIOD OF SIGNIFICANCE:** 1905-1954

**SIGNIFICANT DATES:** 1930

**SIGNIFICANT PERSON:** N/A

**CULTURAL AFFILIATION:** N/A

**ARCHITECT/BUILDER:** Voelcker and Dixon, architects

H. W. Underhill Construction Company, builders

**NARRATIVE STATEMENT OF SIGNIFICANCE** (see continuation sheets 8-18 through 8-28).

---

**9. MAJOR BIBLIOGRAPHIC REFERENCES**

---

**BIBLIOGRAPHY** (see continuation sheets 9-29 through 9-30).

**PREVIOUS DOCUMENTATION ON FILE (NPS):** N/A

- preliminary determination of individual listing (36 CFR 67) has been requested.
- previously listed in the National Register
- previously determined eligible by the National Register
- designated a National Historic Landmark
- recorded by Historic American Buildings Survey #
- recorded by Historic American Engineering Record #

**PRIMARY LOCATION OF ADDITIONAL DATA:**

- State historic preservation office (*Texas Historical Commission*)
- Other state agency
- Federal agency
- Local government
- University
- Other – Specify Repository:

United States Department of the Interior  
National Park Service

## National Register of Historic Places Continuation Sheet

Section 8 Page 18

Cottle County Courthouse Historic District  
Paducah, Cottle County, Texas

The buildings of the Cottle County Courthouse Historic District typify the role of the county seat in the economic and physical development of a rural area. Founded in 1892 as the county seat, Paducah's role as the center of government for Cottle County encouraged the early growth of commerce in an area based largely on an agricultural economy. The strong ranching and farming industry, coupled with the arrival of the railroad, ensured the economic success of the city as it became the transportation center for the agricultural economy of the outlying areas, and merchants established businesses to serve the surrounding communities. Between 1929 and 1930, Cottle County constructed a new county courthouse that remains an outstanding representation of the Art Deco style. A new city hall, hospital and downtown hotel were also built during this peak period of activity that also marked the end of Paducah's economic expansion. The Cottle County Courthouse Historic District is nominated for listing in the National Register of Historic Places under Criterion A at the local level of significance in the areas of Commerce, Community Planning and Development, and Government. The district is also nominated for listing in the NRHP under Criterion C at the local level of significance in the area of Architecture.

### **Paducah and Cottle County to 1930**

The land that would become Cottle County was designated as part of the Fannin Land District in 1846, and the eastern portion was originally included in Hardeman County when it was created in 1858.<sup>4</sup> Hostile Native American tribes, notably Comanches, prevented any extensive settlement in the area until the arrival of the United States Army in the 1870s. Their presence, in addition to the extermination of the buffalo herds by the mid-1870s, paved the way for permanent settlement by Anglos. The Texas Legislature created Cottle County in 1876, one of fifty-four counties carved out of the Texas Panhandle and High Plains that year. The county was named in honor of George Washington Cottle, who died defending the Alamo in 1836.

In 1879 regular stage lines were established between Fort Griffin in Shackelford County and Fort Elliot in Wheeler County. The stage route ran through Cottle County, and small buffalo hunter and cattle ranching settlements were established at Otta (or Otta Springs) in the southeast part of the county and Tee Pee City in the northwest section. The entire population of the county in 1880 numbered only 24 persons. Due to the lack of population, the county was attached to Fannin County for administrative purposes until 1887, and Childress County afterwards. During the 1880s, the county slowly gained population as ranching headquarters were established throughout the county including the OX, SMS, and the Matador. The first post office was established in 1886 at Otta.

Two early disputes that ended in murder provided some of the impetus for the organization of Cottle County. On August 16, 1886, cowboy Bill Trumble ambushed United States Deputy Marshal John L. Abbott at Otta Spring, killing Abbott while he was at the spring with his 22-month old son. Some local ranchers harbored Trumble for two years before he was finally caught. He was sentenced to a life sentence at the state prison at Huntsville, although he was released after serving fifteen years and died two years later.<sup>5</sup> On July 25, 1889, Jim

<sup>4</sup> Gournay 46, 74-75, 78.

<sup>5</sup> Bennett 11-14.

United States Department of the Interior  
National Park Service

National Register of Historic Places  
Continuation Sheet

Section 8 Page 19

Cottle County Courthouse Historic District  
Paducah, Cottle County, Texas

McAdams shot his brother Sam over an argument about their cattle herds. They both went east to Cooke County, where Sam died a few days later. A Cooke County murder trial ended in a hung jury, then Jim was found guilty at a trial in Baylor County. He appealed the case and a new trial was ordered for King County, bordering Childress County on the south. Some accounts relate that Richards and his friends conceived a plan to create a new county where the shooting had occurred, in an attempt to secure more friendly potential jurors and judges.<sup>6</sup> Whatever the true motivation, by 1890, the population of the county stood at 240 on fifty farms and ranches, and the time to organize the county had arrived. W. M. Finger and others presented a petition to the commissioners of adjoining Childress County on November 24, 1891. An election was held January 11, 1892, and the proposal to organize Cottle County passed, with the first county officers elected and a site near the center of the county chosen as county seat. Richard Potts, an early settler from Paducah, Kentucky, offered other settlers free land in return for their vote in naming the county seat after his former hometown, and the site was selected by a vote of 75 to 17.<sup>7</sup>

The county used the home of a Mr. Rodman for court business until a permanent courthouse could be built. Work on a permanent courthouse began almost immediately, with the court awarding a \$1,096.00 contract to L. Lenore on February 9, 1892 for a twenty-four by sixty foot frame building, which was ready by May 5, 1892.<sup>8</sup> By the following year, a newspaper was established, The Paducah Post, and a \$12,000 bond for a county jail was authorized. On August 3, 1893, voters approved an \$18,000 bond issue to build a new courthouse. Later that month Cottle County commissioners awarded J. A. White the contract for this two-story brick courthouse with a prominent cupola tower.<sup>9</sup> This courthouse, completed by November 16, 1894, served Cottle County for thirty-four years.

In 1898 Backus and Martin established the first cotton gin in Paducah, but drought throughout the decade discouraged widespread agricultural development.<sup>10</sup> In 1890 only fifty acres were planted in cotton, but this increased to 749 acres by 1900. The cattle industry thrived despite drought, and 43,000 head of cattle were reported in the county by 1900. The number of farms and ranches more than doubled to 122 in 1900, with more than 7,750 acres of improved farmland. Moreover, the county population more than quadrupled within ten years to 1,002.

The early years of the 20<sup>th</sup> century witnessed the development of the farming industry in Cottle County with the expansion of cotton farming. Farming was also promoted by an expansion of the transportation system. With the arrival of the Quanah, Acme and Pacific Railroad to Paducah on Christmas Day in 1909 and the construction of additional roads to Childress and Matador, local farmers had adequate access to important markets.<sup>11</sup> By the early 1900s, Paducah boasted a bank, lumberyard, telephone company, Odd Fellows' Hall,

<sup>6</sup> Bennett 22. Noack.

<sup>7</sup> "Paducah, Texas." Bennett 22.

<sup>8</sup> Cottle County Commissioners Court minutes, February 9, 1892. Bennett 24.

<sup>9</sup> Cottle County Commissioners Court minutes, August 31, 1893.

<sup>10</sup> The worst years of the drought were 1892, 1893 and 1894.

<sup>11</sup> "Paducah, Texas."

United States Department of the Interior  
National Park Service

## National Register of Historic Places Continuation Sheet

Section 8 Page 20

Cottle County Courthouse Historic District  
Paducah, Cottle County, Texas

school, and two churches. The Paducah Post of September 28, 1906 reported that the Panhandle Telephone Company had installed 41 telephones in town.<sup>12</sup> During this time the Paducah Post engaged in enthusiastic boosterism to exhort the citizens toward better buildings, schools, houses and roads, and generally progressive ideas. E. A. Carlock was the editor and publisher of the Post beginning in 1908.<sup>13</sup> Special issues celebrated Paducah's humming business district, with headlines such as "Paducah: A Prosperous City of Progressive People," and "Paducah, the Coming City of West Texas."<sup>14</sup> The Commercial Club also contributed greatly to Paducah's rise. They helped secure a rail connection, incorporation of the city, public water, electricity, paved streets and other civic improvements. The Commercial Club also attended conferences and made trips not only to adjoining counties, but larger cities and destinations as far-flung as Little Rock and Denver to promote Paducah.

### Criterion A: Community Planning and Development and Commerce

The development of Paducah reflected the growing prosperity of Cottle County. The town incorporated on February 28, 1910, the vote being 93 to six in favor.<sup>15</sup> Immediately afterward, a bond issue for \$50,000 in better roads and \$10,000 in bridge improvements also passed. In that year, over 17,000 acres were planted in cotton within the county as Paducah became a mercantile center for the surrounding agricultural communities. By 1910, the population of Paducah mushroomed to 1,350. The number of businesses around the square increased, and a second bank, The First State Bank, opened in 1910. The importance of the banking institutions is emphasized by their architecture. At the time of their construction, these two buildings (Properties 5 and 11) represented the most monumental examples of commercial architecture on the square. Each occupied a corner location along North Ninth Street, a main transportation artery through Paducah. Rising two stories in height and with a greater depth than most other buildings, the buildings featured brick construction with corner entrances punctuated with columns and other decorative architectural features. These financial institutions played an essential role in supporting the agricultural economy of the area, supplying farmers with the necessary funds to plant their cash crops. The only other two-part commercial block building during this first decade of the 20<sup>th</sup> century was the lodge building on Backus Street (Property 33). The Paducah Post of June 24, 1910 announced a "Brick Building Era" for the city, with nineteen large buildings completed or under construction, and talk of as many as fifteen more brick business houses in the near future.<sup>16</sup>

The construction of good automobile roads between Paducah, Childress and Matador by 1910 encouraged trade and tourism.<sup>17</sup> The Paducah State Bank built in 1910 was destroyed by fire the following spring and rebuilt to the same specifications.<sup>18</sup> A three-story brick high school was built in 1910 ten blocks west of the courthouse

<sup>12</sup> Bennett 44.

<sup>13</sup> Carlock was president of the Panhandle Press Association 1922-23 and president of the Texas Press Association 1927-28.

<sup>14</sup> Paducah Post, May 8, 1908, July 23, 1909.

<sup>15</sup> Paducah Post, March 4, 1910, p. 1, col. 4.

<sup>16</sup> Bennett 34.

<sup>17</sup> "Cottle County."

<sup>18</sup> Bennett 68.

United States Department of the Interior  
National Park Service

## National Register of Historic Places Continuation Sheet

Cottle County Courthouse Historic District  
Paducah, Cottle County, Texas

Section 8 Page 21

square.<sup>19</sup> A search of mechanic's liens and newspaper archives at the Cottle County Courthouse reveals that the Drummond-Crump Lumber Company supplied the building materials for the majority of Paducah's buildings dating from circa 1910. Others responsible for multiple buildings included J. F. Hardin, lumber and contractor, A. E. Sneed, contractor, Cicero Smith Lumber Company, A. L. West, contractor, and William Cameron and Company, Inc. Taylor and Wolf were listed as architects for a 1910 building that was later replaced by the Paducah Drug Company twenty years later.<sup>20</sup> Discovery of oil pools in February 1911 further diversified the Cottle County economy and contributed to its growing activity. The addition of a city electric plant and waterworks in 1912 were also among Paducah's progressive improvements. The frontier tradition was also evident in another notorious killing at Paducah on May 23, 1912, as either renowned rancher Samuel Burk Burnett or his acquaintance Tom Pickett shot and killed Farley Sayers in the washroom of the Goodwin Hotel, on the southwest corner of the courthouse square. Two months later at a trial in Seymour, Burnett was acquitted of murder charges, and charges against Pickett were subsequently dismissed.<sup>21</sup>

While frame buildings were still in evidence around the square, one-part commercial brick buildings began to reflect the merchants' increased prosperity. Improvements were made to the downtown area, including the construction of sidewalks around the courthouse square and electric lights around the courthouse square by 1913.<sup>22</sup> Transportation improvements continued as well with the first hard-surfaced road to Dunlap completed in 1913. During this period, buildings were extended along the southern extension of south Ninth Street from the square with the construction of two brick buildings in 1912 and the Zana Theater in 1915. The growth of the town also required the numbering of streets to assist the fire department in 1916. Sidewalks were constructed in front of the businesses around the square in 1917. In 1918 the Canadian-Del Rio Highway, which ran north-south through Paducah, was designated as a state road, bringing state and federal aid to improve the road surface.<sup>23</sup>

The growth of Paducah peaked during this period with a population of 1,800 in 1915 and 2,400 in 1920.<sup>24</sup> By 1920, the number of acres planted in cotton in the county more than doubled in ten years to over 45,000 acres. This increased prosperity is reflected in the numerous buildings constructed around the courthouse square during this decade. By the time of publication of the first Sanborn map for the town in May of 1921, all sides of the square were essentially built out except for east side (North 8<sup>th</sup> Street). The earlier character of the town is still apparent, however, in the presence of large wagon yards on the northeast and southeast corners of the

<sup>19</sup> Bennett 70.

<sup>20</sup> Cottle County mechanic's liens, 1905-1915.

<sup>21</sup> Bennett 34-36. In January 1915, J. M. Haverty of the Matador Ranch shot and killed attorney R. D. Browne in front of the First State Bank (Bennett 80). In November 1922, C. B. Berry shot and killed Wood Barton in front of the First National Bank. Berry was acquitted at Seymour (Bennett 89, 91). In February and July of 1923, C. B. Berry and J. B. Sneed got into shooting matches downtown, but both men survived and were tried at Benjamin and found not guilty of attempted murder (Bennett 90-91).

<sup>22</sup> Bennett 86.

<sup>23</sup> Bennett 78.

<sup>24</sup> "Paducah, Texas."

United States Department of the Interior  
National Park Service

## National Register of Historic Places Continuation Sheet

Section 8 Page 22

Cottle County Courthouse Historic District  
Paducah, Cottle County, Texas

squares. Frame buildings are also still scattered throughout downtown, except for the north and west sides of the square that now consist entirely of brick buildings.

The 1920s witnessed the emergence and domination of one-part commercial brick buildings throughout the courthouse square commercial area. While modest in scale and design, these buildings brandished a remarkable display of decorative brick in their parapets. Virtually every building constructed during this period displays an ornamental flourish within the upper part of the building. The variety within the buildings includes sawtooth designs, complex brick corbelling, herringbone patterning, brick paneling of some complexity, stepped parapets, and other geometric designs. Many of the typical storefront designs of this period, with recessed entries flanked by wood-framed plate glass windows and transoms, have survived intact in many of the existing buildings. The county constructed a new jail with the sale of bonds in 1921, located just one block east of the courthouse square. The site of the old jail was purchased by the Veterans of Foreign Wars, who eventually constructed a hall utilizing the stone from the old jail for the foundation of their new building.

In 1922 word came that Paducah would be on the route of the Lee Highway from Washington, D.C. to San Diego, California, which when combined with the Canadian-Del Rio put Paducah at the intersection of two cross-country roads. A third chief interstate road was the F.F.F. Paducah still uses "Crossroads of America" among its monikers. Securing the Lee Highway was one of the first works of the Cottle County Chamber of Commerce, along with the construction of a 180-foot bridge across the Little Wichita River and the establishment of a free campground in Paducah for travelers.<sup>25</sup> In 1923 a writer from the News-Democrat of Paducah, Kentucky visited the namesake town in Texas, and reported that the Texas town had "five dry goods stores, two women's ready-to-wear establishments, two furniture stores, seven groceries, four garages, three drive-in filling stations, two lumber yards, a couple of hardware stores, three drug stores and a moving picture show. In addition there is a telephone exchange, six wholesale oil companies, two banks, a cotton compress, three barber shops, two produce houses, five gins. A large community tabernacle is another feather in Paducah's hat."<sup>26</sup>

More progressive achievements in the 1920s included the establishment of the Cottle County Library and both Chautauqua and Farmer's Institute programs for adult education. Paducah's civic improvement effort continued in November 1924, when voters overwhelmingly approved waterworks bonds by a vote of 278 to 3, sewer bonds, 276 to 5, and street improvement bonds, 275 to 4.<sup>27</sup> The Paducah Post of January 1, 1925, reported that "Paducah's streets are crowded - town resembles an oil field locality on Saturdays." The article further related that the gins were running full time, several vacant blocks were storing cotton bales, and downtown and many side streets were packed with cars and wagons.<sup>28</sup> In February, 1925, county commissioners agreed to cut

<sup>25</sup> Paducah Post, February 8, 1923, p. 1, col. 1-2.

<sup>26</sup> Paducah Post, February 22, 1923, quoting Paducah News-Democrat (Kentucky) of February 11, 1923.

<sup>27</sup> Paducah Post, November 20, 1924, p. 1.

<sup>28</sup> Bennett 91.

United States Department of the Interior  
National Park Service

## National Register of Historic Places Continuation Sheet

Cottle County Courthouse Historic District  
Paducah, Cottle County, Texas

Section 8 Page 23

twenty feet off the courthouse lawn on all sides for the purpose of enlarging the thoroughfares around the courthouse square.<sup>29</sup>

Work on new buildings peaked again between 1927 and 1930. Henry Gentry and Charles Bialkowski were among the contractors and superintendents.<sup>30</sup> The Paducah Post, established in 1893, constructed a two-story brick building (Property 32) at the corner of North 8<sup>th</sup> Street and Richards Street in 1928. The 809-seat Palace Theater opened in November 1928 as the New Theatre with much fanfare and a detailed description of the new facility in the newspaper.<sup>31</sup> With the demolition of the old Buggs Wagon Yard on the square in 1928, the courthouse square began to take on the appearance it retains today. Brick streets were laid down in the central business district and several adjoining streets in 1928-29. In September 1929 the newspaper reported progress in the built environment of Paducah, with a new hotel and hospital under construction, sixty blocks of brick streets, and 200 homes recently built.<sup>32</sup> In 1929, Paducah also began construction on its first municipal building, a new city hall located west of the courthouse square and ready for occupancy by September, 1929.<sup>33</sup> In fact, three of Paducah's most visible public improvements were being built simultaneously, as a new courthouse, city hall and hospital were all underway in the spring of 1929.<sup>34</sup>

Paducah also celebrated the opening of more new businesses and civic buildings, including a branch of the C. E. Stone Company dry goods and fashion store on October 12, 1929, and the formal dedication of the thirty-five room W. Q. Richards Memorial Hospital the following day.<sup>35</sup> The Lee Highway was paved with concrete west to the Motley County line by November 1929, while the newspaper celebrated that the nearing completion of the Cottle Hotel and a new courthouse would bring to a close the most productive eighteen months in the town's history, nearly doubling the size of Paducah's business section.<sup>36</sup> Paducah was also the home of the first store of M. E. Moses, established in the 1920s. Over seventy years Moses' five-and-dime variety stores expanded to more than fifty locations across the southwestern United States before the company finally declared bankruptcy and closed the chain. The Cottle Hotel (Property 41), a three-story hotel featuring fifty rooms, began construction in 1929, as did the Norris Funeral Home two blocks from the courthouse square.<sup>37</sup> The Cottle Hotel was the last major business house to be built around the courthouse square. The construction of a new courthouse in 1929-30 was also the last major construction project in Paducah, marking a watershed between the county's rise in prosperity and its subsequent long decline.

### Cottle County Courthouse, 1929-1930

<sup>29</sup> Bennett 94. Paducah Post, February 26, 1925.

<sup>30</sup> Paducah Post, January 12, 1928, p. 1, October 25, 1928, p. 1, June 6, 1929, p. 1.

<sup>31</sup> Paducah Post, November 8, 1928, p. 1.

<sup>32</sup> Paducah Post, September 12, 1929, p. 1.

<sup>33</sup> Paducah Post, September 12, 1929.

<sup>34</sup> Paducah Post, May 30, 1929.

<sup>35</sup> Paducah Post, October 10, October 17, 1929.

<sup>36</sup> Paducah Post, November 7, 1929, p. 1, col. 1.

<sup>37</sup> Paducah Post, January 9, January 16, 1930.

United States Department of the Interior  
National Park Service

## National Register of Historic Places Continuation Sheet

Section 8 Page 24

Cottle County Courthouse Historic District  
Paducah, Cottle County, Texas

On April 15, 1929, the county commissioners voted to award C. H. Leinbach a contract for a new courthouse. Leinbach, a Dallas architect, designed mainly schools, city halls and commercial buildings. His only known courthouse in Texas is the Wood County Courthouse (1925) at Quitman in the northeast part of the state. Just four days after awarding Leinbach the contract, the commissioners rescinded the order.<sup>38</sup> On May 11, 1929 citizens of Cottle County voted on whether to issue \$150,000 in bonds for a new courthouse, the design published in the newspaper being similar to both Leinbach's Wood County design and Voelcker and Dixon's Wilbarger County Courthouse at Vernon (67 miles east).<sup>39</sup> The issue passed by a vote of 475 to 227, but was split between Paducah and the rest of the county. In Paducah the vote was 335 to 50 in favor, while outside the city the measure failed 177 to 140, carrying only six of fifteen precincts.<sup>40</sup>

On May 31, 1929 the county commissioners awarded a new courthouse contract to the firm of Voelcker and Dixon of Wichita Falls.<sup>41</sup> Construction bids were advertised on August 12, and the contract was let to Underhill Construction of Kansas City on September 18, for a total of \$157,641.00 excluding the plumbing contract.<sup>42</sup> Work on the courthouse was reported begun by October 3, 1929.<sup>43</sup> Voelcker and Dixon had knowledge of Art Deco and Moderne architecture from work on their participation in the design of the U.S. Post Office and Courthouse in Wichita Falls, designed by James Wetmore, the U.S. Supervising Architect. This building was classical, yet simplified in the "stripped modernism" of its design. The pair also designed the Callahan County Courthouse in 1929 in a Moderne interpretation of more traditional Classical Revival architecture.

The final design for the Cottle County Courthouse is not the Classical Revival design voted on by the citizens of the county, but an ebullient manifestation of Art Deco style that remains one of the premier examples in Texas. The rationale for changing the design is not recorded in the local newspaper or county commissioners' minutes, but an article in the Paducah Post reporting that Underhill Construction Company lowered its initial bid and received the contract for the courthouse added that "the commissioners' court was indeed glad to get a bid in this amount without having to change the general plans of the structure, as the plans were as nearly perfect, according to the court's opinion, as could be had."<sup>44</sup>

The commissioners conducted county business at Paducah City Hall, the First National Bank and the Security National Bank while the new courthouse was under construction.<sup>45</sup> The cornerstone ceremony was held on April 11, 1930, with J. H. Doolen, first Cottle County Judge from thirty-eight years before, among the

<sup>38</sup> Cottle County Commissioners Court minutes, April 15, 19, 1929.

<sup>39</sup> Paducah Post, May 9, 1929, p. 1.

<sup>40</sup> Paducah Post, May 16, 1929, p. 1.

<sup>41</sup> Cottle County Commissioners Court minutes, May 31, 1929.

<sup>42</sup> Paducah Post, September 19, 1929, p. 1.

<sup>43</sup> Paducah Post, October 3, 1929, p. 1.

<sup>44</sup> Paducah Post, September 19, 1929, p. 1.

<sup>45</sup> Cottle County Commissioners Court minutes, July 8, 1929. Paducah Post July 11, 1929, p. 1.

United States Department of the Interior  
National Park Service

National Register of Historic Places  
Continuation Sheet

Cottle County Courthouse Historic District  
Paducah, Cottle County, Texas

Section 8 Page 25

participants shortly before his death.<sup>46</sup> The county commissioners declared the building ready for occupancy on June 9, 1930.<sup>47</sup> A stone retaining wall was added in 1931.<sup>48</sup>

**Voelcker and Dixon, architects**

The firm of Herbert Voelcker (1888-1971) and Jesse G. Dixon (1888-1962) was among the most prolific practitioners of Art Deco and Moderne design for public buildings in Texas. After Cottle County they designed a similar Art Deco design for Gregg County in 1932, and then a string of five Moderne courthouses in six years. The designs for these courthouses are much simpler, with a tendency towards a single massive block with simple projecting pavilions or a single block broken by vertical windows.

The monumentality and grandeur of the Cottle County Courthouse dominates the architecture of the courthouse square. The WPA Guide to Texas describes Paducah "as a quiet little prairie town" and conveys the contrast of the architecture of the courthouse to its surviving commercial buildings in its description of the town "with its tiny, false-fronted business district and frame residential section, [Paducah] seems totally unawed by the grandeur of its massive courthouse, which resembles an Egyptian temple."<sup>49</sup>

Voelcker and Dixon courthouses:

County	City	Year	Notes
Wilbarger	Vernon	1928	Classical Revival
Callahan	Baird	1929	Moderne
Cottle	Paducah	1930	Art Deco
Midland	Midland	1930	Moderne. Major alterations 1974.
Gregg	Longview	1932	Art Deco
Knox	Benjamin	1935	Moderne
Grayson	Sherman	1936	Moderne
Van Zandt	Canton	1937	Moderne
Jack	Jacksboro	1940	Moderne
Rockwall	Rockwall	1941	Moderne
Waller	Hempstead	1955	International

**Paducah and Cottle County after 1930**

Paducah started the new year with the grand opening of the Cottle Hotel on the northeast corner of the courthouse, opening with great fanfare on January 16, 1930.<sup>50</sup> The cross-country Lee Highway was designated in 1930, and Paducah celebrated the dedication of their new county courthouse in June 1930 and the Richards

<sup>46</sup> Bennett 100.

<sup>47</sup> Cottle County Commissioners Court minutes, June 9, 1930.

<sup>48</sup> Bennett 105.

<sup>49</sup> WPA Guide to Texas 481.

<sup>50</sup> Paducah Post, January 9, 1930, p. 1.

United States Department of the Interior  
National Park Service

## National Register of Historic Places Continuation Sheet

Cottle County Courthouse Historic District  
Paducah, Cottle County, Texas

Section 8 Page 26

Memorial Hospital on October 13.<sup>51</sup> West Texas Utilities completed a new Moderne style building at 8<sup>th</sup> and Backus in April 1931.<sup>52</sup> Establishment and advertisement of U.S. Highway 62 as the Carlsbad Cavern Highway contributed to continued traffic through Paducah in 1931.<sup>53</sup> Highway 62 ran from New York City to El Paso, Texas, and as with other interstate highways Paducah was an active member in its promotion and improvement.<sup>54</sup>

But 1930 also marked the peak of Cottle County's population and prosperity. A rapid increase in cotton cultivation in Cottle County contributed to Paducah's rise as a regional shipping center. Acres in cultivation of cotton rose from 749 in 1900 to 133,467 by 1930. Additional agriculture included wheat, sorghum, poultry farms, and fruit trees.<sup>55</sup> The effects of the stock market crash, Great Depression and the environmental disaster of the Dust Bowl took their toll on Paducah. A large sandstorm on June 14, 1931 was reported in the newspaper, with fierce waves of wind-blown sand devastating cotton crops, and a loss initially estimated at over half the county's crop.<sup>56</sup> Cotton prices collapsed in 1931, falling to five cents a bale. At an August meeting in New Orleans, Louisiana Governor Huey Long called upon the cotton-growing states to call special sessions of their legislatures and pass laws forbidding the planting of additional cotton the following year. Later that month approximately 500 Cottle County farmers met at the courthouse to discuss the situation. After much debate, they passed a resolution to ask Texas Governor Ross Sterling and the state legislature to enact a law limiting cotton acreage by half of the previous year's levels.<sup>57</sup> Efforts at conservation and education attempted to salvage some of the county's agricultural success and stabilize the work force. The county agent was especially active during this period, including a Farmers' Short Course with lectures at the Palace Theater and the high school auditorium with audiences numbering near 1000 participants.<sup>58</sup> But the local economy was beginning to spiral down. The Security National Bank closed its doors on October 31, 1933, leaving Paducah with only one bank for the first time in twenty-six years.<sup>59</sup> The effects of the Depression, coupled with a severe drought, destroyed the progress made earlier in the century. Almost one-third of the county's farmers were forced off their farms. Plagued by dust storms that destroyed the topsoil of abandoned farms, the county reported only 59,000 acres planted in cotton by 1940, a drop of 56 percent in a decade. Although the New Deal programs sustained some, many people just chose to leave and the county nearly 25 percent of its total population during the decade of the 1930s. By 1940, there were less than 700 farms remaining in all of Cottle County.<sup>60</sup>

The economy continued to decline during World War II as men were called to serve in the armed forces. The mechanization of agriculture after World War II improved production, but the severe droughts continued

<sup>51</sup> Bennett 104.

<sup>52</sup> Paducah Post, April 30, 1931, p. 1.

<sup>53</sup> Paducah Post, August 21, 1931.

<sup>54</sup> Paducah Post, January 21, 1932, p. 1.

<sup>55</sup> "Cottle County."

<sup>56</sup> Paducah Post, June 18, 1931.

<sup>57</sup> Paducah Post, August 27, 1931, p. 1.

<sup>58</sup> Paducah Post, March 10, March 17, 1932.

<sup>59</sup> Bennett 98.

<sup>60</sup> "Cottle County."

United States Department of the Interior  
National Park Service

National Register of Historic Places  
Continuation Sheet

Cottle County Courthouse Historic District  
Paducah, Cottle County, Texas

Section 8 Page 27

throughout the 1950s. In 1950 the Quanah, Acme and Pacific Railroad discontinued passenger service to Paducah.<sup>61</sup> Prolonged drought throughout the 1950s further weakened Cottle County's economy and resulted in further population loss as more people moved away. The population of the county continued to decline from 7,079 in 1940 to 6,099 in 1950 and 4,207 in 1960. By 1960, there were only 387 farms remaining in the county. With the continued economic decline, the existing buildings of the courthouse square escaped major alterations and modernizations. Whereas many such small towns attempted to revitalize their downtown buildings with the application of slipcovers to historic facades, few such modernization attempts were made in Paducah. The only such alterations were the application of stucco to some buildings, primarily those on the west side of the square, executed circa 1949.<sup>62</sup> Unfortunately, the economy has continued this pattern of decline to this day, resulting in the abandonment of many of the buildings around the square and their resulting deterioration. Although in a state of decline, the Cottle County Courthouse Historic District preserves a unique moment in time, capturing a portrait of the economic prosperity of the early 20<sup>th</sup> century.

Population change, Paducah and Cottle County, 1880-2000<sup>63</sup>

Year	Paducah	Change (%)	Cottle County	Change (%)	City share(%)	Rank
1880			24			199
1890			240	+900.0		207
1900			1002	+317.5		199
1910	1389		4396	+338.7	31.6	172
1920	1335	-3.9	6901	+57.0	19.3	161
1930	1318	-1.3	9395	+36.1	14.0	163
1940	2677	+103.1	7079	-24.7	37.8	185
1950	2952	+10.3	6099	-13.8	48.4	195
1960	2392	-19.0	4207	-31.0	56.9	214
1970	2052	-14.2	3204	-23.8	64.0	223
1980	2218	+8.1	2947	-8.0	75.3	228
1990	1788	-19.4	2247	-23.8	79.6	236
2000	1498	-16.2	1904	-15.3	78.7	238

Paducah has lost 49.3 percent of its peak population since 1950, while Cottle County has lost 79.7 percent of its peak population since 1930. Cottle County's population has always ranked in the lower half of Texas' 254 counties, but in the 2000 census a new low ranking of 238 was reported, meaning only sixteen counties in Texas have fewer residents. Another sharp trend since 1930 has been the consolidation of the county population at Paducah. While the town had only a 14 percent share of the county's population in 1930, the share has risen steadily to near 79 percent in the most recent census. While cotton, cattle, and grains continue to fuel the local

<sup>61</sup> Bennett 108.

<sup>62</sup> Bennett 223 photo; Taylor interview. Taylor, Editor of the Paducah Post, recalls that most of the buildings received a stucco application in the late 1940s.

<sup>63</sup> Texas Almanac 2002-2003, pp. 383-399.

United States Department of the Interior  
National Park Service

## National Register of Historic Places Continuation Sheet

Section 8 Page 28

Cottle County Courthouse Historic District  
Paducah, Cottle County, Texas

economy, increased consolidation of farms and an agriculturally dependent economy continue to erode the population base.

### Criterion C: Architecture

The Cottle County Courthouse Historic District includes a high percentage of buildings that reflect architectural styles adapted for local commercial architecture, as well as several examples of detailed brickwork dating from the 1910s and 1920s. Most of the buildings are clad in brick, with a nearly continuous concentration facing the Cottle County Courthouse and extending in each cardinal direction. Most commercial buildings in the district can be characterized as 1-part or 2-part commercial blocks, terminology devised by Richard Longstreth in *The Buildings of Main Street* (1987). As commercial buildings often do not always exhibit the characteristics of high styles, Longstreth's typology is based on facade organization. Architectural detailing may be either prominent or totally lacking.

**One-part commercial blocks** can be free-standing or part of a row. The one-part commercial block usually consists of one or two windows and a central doorway. False parapet fronts or brick coping often enhance the upper wall. This vernacular storefront type - common throughout the U.S. between 1870 and 1930 - typically features a large, plate glass display window on either side of a deeply recessed entryway. Transoms above the display windows provide additional light into the interior. **Two-part commercial blocks** can also be freestanding or part of a row. This type is distinguished by its division of the facade into two distinct sections. The ground floor is similar to the one-part commercial block while the upper portion is commonly punctuated with smaller window openings at regular intervals. The upper floors of these buildings were commonly used for offices, meeting halls, hotel rooms, and apartments. Modernism appears to have had little impact on commercial architecture in Paducah, with few examples of slipcovers or other mid-century attempts at modernization that are commonly found throughout commercial districts in Texas. The Heatly Building (Property 51), built in 1975, is the only post-1954 intrusion into the historic fabric of the district. Carlock Memorial Park (Property 56) is a small landscaped area at the site of a former building that was lost.

### Conclusion

The Cottle County Courthouse Historic District is a highly intact concentration of early 20<sup>th</sup> century commercial and institutional buildings at the center of Paducah, Texas. The concentration of buildings represents the prosperity of Paducah between the turn of the 19<sup>th</sup> century and the Great Depression as a regional center for agriculture and trade. The development of the commercial district, centered on the Cottle County Courthouse, remains evident and relatively unaltered since the historic period. The 1930 Cottle County Courthouse is the second permanent building for the county since its organization in 1892. In addition to the courthouse, which is an excellent regional example of Art Deco public architecture, the district includes several one- and two-part commercial blocks, with substantial brick detailing in the parapets. There are also good local examples of recognized architectural styles, including Classical Revival banks, a Spanish Revival-influenced movie theater and a Mediterranean Revival-influenced drug store. The district retains integrity of materials, workmanship, design, location, setting, association and feeling to a high degree.

United States Department of the Interior  
National Park Service

## National Register of Historic Places Continuation Sheet

Section 9 Page 29

Cottle County Courthouse Historic District  
Paducah, Cottle County, Texas

---

### Bibliography

- Bennett, Carmen. Our Roots Grow Deep: A History of Cottle County. Floydada: Blanco Offset Press, 1970.
- Bennett, Carmen. Cottle County, My Dear: Where the "Pan" Joins the "Handle." Floydada: Blanco Offset Printing, 1979.
- "Cottle County." Article by John Leffler in New Handbook of Texas. Austin: Texas State Historical Association, 1996.
- Francavaglia, Richard. Main Street Revisited. Iowa City: University of Iowa Press, 1996.
- Gournay, Luke. Texas Boundaries. College Station: Texas A&M University Press, 1995.
- Henry, Jay. Architecture in Texas, 1895-1945. Austin: University of Texas Press, 1993.
- Kelsey, Mavis and Donald Dyal. The Courthouses of Texas. College Station: Texas A&M University Press, 1993.
- Martin, Meredith Richards. "Puzzle in Paducah: The Samuel Burk Burnett-Farley Sayers Murder Trial." Paper presented at Texas State Historical Association annual meeting, Austin, Texas, March 6, 2004.
- Noack, Hanaba Munn. "Judicial Overhaul." Article in Wichita Falls Times-Record-News, October 12, 1997.
- Paducah Post, Paducah, Texas, various issues, available on microfilm at Bicentennial City-County Library, Cottle County Courthouse.
- "Paducah, Texas." Article by Charles G. Davis in New Handbook of Texas. Austin: Texas State Historical Association, 1996.
- Robinson, Willard. Gone From Texas. College Station: Texas A&M Press, 1982.
- Robinson, Willard. The People's Architecture. Austin: Texas State Historical Association, 1983.
- Robinson, Willard. Texas Public Buildings of the Nineteenth Century. Austin: University of Texas Press, 1974.
- Sanborn Fire Insurance Maps of Paducah, Texas, May 1921, February 1926 and October 1940.

United States Department of the Interior  
National Park Service

## National Register of Historic Places Continuation Sheet

Section 9 Page 30

Cottle County Courthouse Historic District  
Paducah, Cottle County, Texas

---

### Bibliography (continued)

- Sasser, Elizabeth. Dugout to Deco: Building in West Texas, 1880-1930. Lubbock: Texas Tech University Press, 1993.
- St. Clair, Kathleen and Clifton. Little Towns of Texas. Jacksonville, Texas: Jayroe Graphic Arts, 1982.
- Taylor, Jimmye, interview with Lila Knight, May 2003.
- Texas Almanac 2002-2003. Mary Ramos, editor. Dallas: Belo Corporation, 2001.
- Veselka, Robert. The Courthouse Square in Texas. Austin: The University of Texas Press, 2000.
- Welch, June Rayfield and J. Larry Nash. The Texas Courthouse Revisited. Dallas: GLA Press, 1984.
- WPA Guide to Texas (facsimile reprint of 1940 edition). Austin: Texas Monthly Press, 1986.

---

**10. GEOGRAPHICAL DATA**

---

**ACREAGE OF PROPERTY:** Approximately 13.86 acres

<b>UTM REFERENCES</b>	<u>Zone</u>	<u>Easting</u>	<u>Northing</u>	<u>Zone</u>	<u>Easting</u>	<u>Northing</u>	
1.	14	379740	3764440	3.	14	380060	3764120
2.	14	380060	3764440	4.	14	379740	3764120

**VERBAL BOUNDARY DESCRIPTION:** (see continuation sheet 10-31)

**BOUNDARY JUSTIFICATION:** (see continuation sheet 10-31)

---

**11. FORM PREPARED BY** (based on survey prepared by Lila Knight for Texas Department of Transportation)

---

**NAME/TITLE:** Bob Brinkman

**ORGANIZATION:** Texas Historical Commission

**DATE:** April 12, 2004

**STREET & NUMBER:** P. O. Box 12276

**TELEPHONE:** (512) 463-8769

**CITY OR TOWN:** Austin

**STATE:** Texas

**ZIP CODE:** 78711-2276

---

**ADDITIONAL DOCUMENTATION**

---

**CONTINUATION SHEETS** (see continuation sheets FIGURE-33 through FIGURE-36)

**MAPS** (see continuation sheet MAP-32 and topographic map)

**PHOTOGRAPHS** (see continuation sheet PHOTO-37)

**ADDITIONAL ITEMS**

---

**PROPERTY OWNER**

---

**NAME:** (information on file at Texas Historical Commission)

**STREET & NUMBER:**

**TELEPHONE:**

**CITY OR TOWN:**

**STATE:**

**ZIP CODE:**

United States Department of the Interior  
National Park Service

## National Register of Historic Places Continuation Sheet

Section 10 Page 31

Cottle County Courthouse Historic District  
Paducah, Cottle County, Texas

### Verbal Boundary Description

Beginning at a point at the northwest corner of Block 4, original plat of Paducah, Cottle County, Texas, located at the southeast corner of the intersection of North 10<sup>th</sup> and Garrett Streets, proceed east 375' to the northwest corner of Block 3, located at the southeast corner of the intersection of North 9<sup>th</sup> and Garrett Streets. Proceed north 75', then proceed east 325' feet to the southwest corner of Block 13, located at the northeast corner of the intersection of North 8<sup>th</sup> and Garrett Streets. Proceed south 75', then east 150' to the alley running through the middle of Block 2. Proceed south 375' to the north line of Block 1, then east 140' to the northeast corner of Block 1, located at the southwest corner of the intersection of North 7<sup>th</sup> and Backus Streets. Proceed south 325' to the northeast corner of Block 8, located at the southwest corner of the intersection of South 7<sup>th</sup> and Richards Streets. Proceed west 375' to the northeast corner of Block 7, located at the southwest corner of South 8<sup>th</sup> and Richards Streets. Proceed south 300' to the southeast corner of Block 7, then proceed west 125' feet to the north-south alley running through the middle of Block 7. Proceed north 160' to the intersection with the east-west alley running through the middle of Block 7, then proceed west 190' to the east side of Block 6. Proceed south 100' to a point 50' north of the southeast corner of Block 6, said corner located at the northwest corner of the intersection of South 9<sup>th</sup> and Easley Streets. Proceed west 150' to the alley running through the middle of Block 6, then proceed north 175', then proceed west 150' along the south line of Lot 22 of Block 6 to a point on the west side of Block 6. Proceed north 75' to the northwest corner of Block 6, located at the southeast intersection of South 10<sup>th</sup> and Richards Streets. Proceed east 150' to the north side of Block 6, then proceed north 225' through the alley running through Block 5, then proceed west 150' along the south line of Lot 17 of Block 5 to a point on the west side of Block 5. Proceed north 100' to the northwest corner of Block 5, located at the southeast intersection of North 10<sup>th</sup> and Backus Streets. Proceed east 150' to the north side of Block 5, then proceed north 300' through the alley running through Block 4, then proceed west 150' along the south line of Lot 22 of Block 4 to a point on the west side of Block 4. Proceed north 75' to the point of origin.

### Boundary Justification

The most important features in defining the boundaries of the historic district's boundaries include shared historical associations, visual cohesiveness and integrity of the buildings, and the aesthetic features that distinguish the district from adjoining properties. The district incorporates the historic commercial core of Paducah, more specifically the courthouse square and all or part of the eight blocks that immediately surround it, recorded as Court House Square and Blocks 1 through 8 on the original plat of Paducah, Cottle County, Texas. The boundaries are also adjusted to account for historic and topographic limits. For example, a ravine northeast of the courthouse has historically limited development. Large vacant areas and areas containing no intact historic buildings are also excluded, chiefly on the west side of the district fronting north Tenth Street, on the northeast corner of the district fronting North Seventh Street and Garrett Street, and along the south side of the district fronting South Eighth Street, South Seventh Street and Easley Street. Beyond the nine city blocks centered on the courthouse, development includes a mixture of building types (commercial and residential), ages (historic and recent), and integrity that lacks the cohesion of buildings within the district.

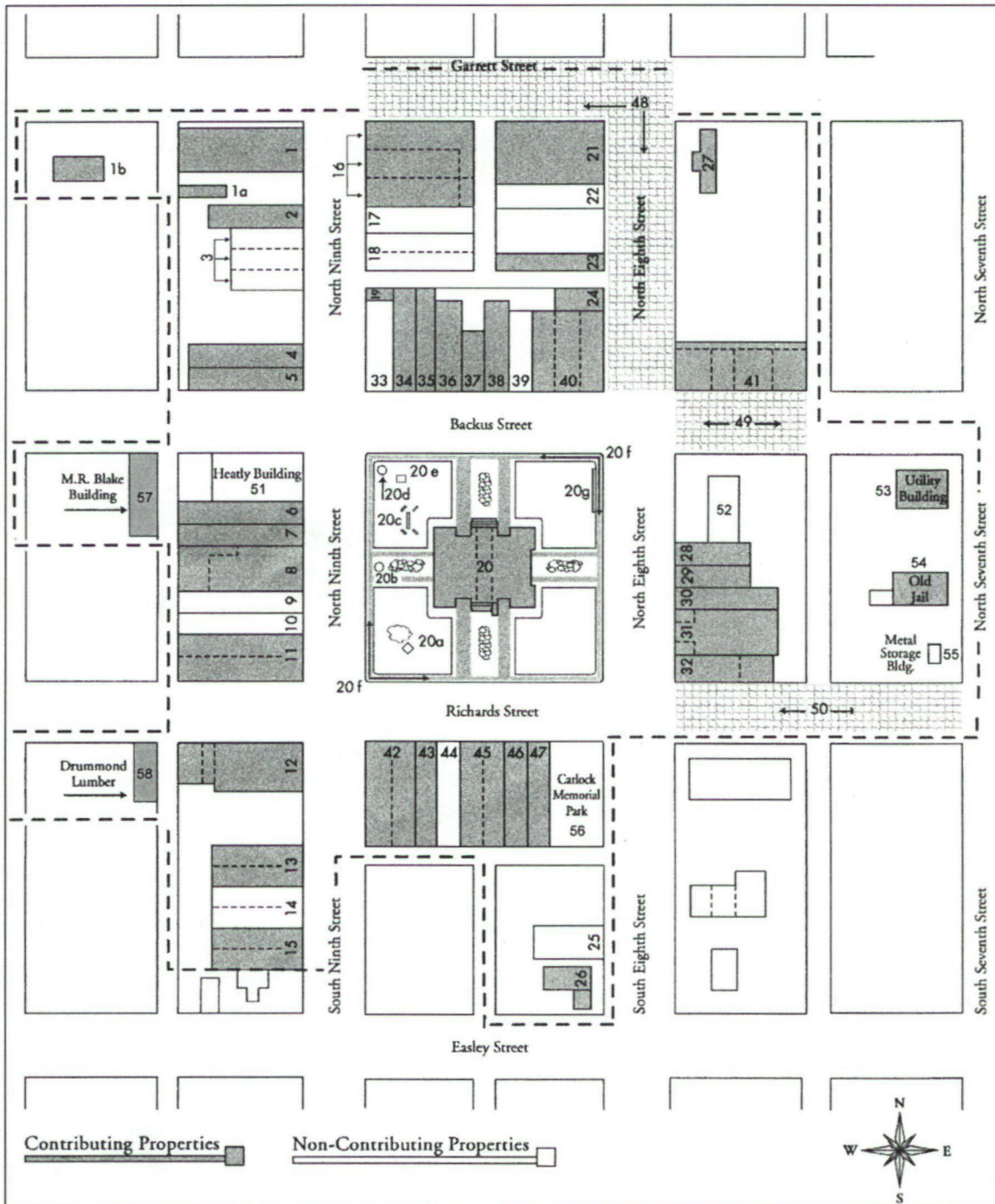
United States Department of the Interior  
National Park Service

# National Register of Historic Places Continuation Sheet

Section MAP Page 32

Cottle County Courthouse Historic District  
Paducah, Cottle County, Texas

Map of contributing and noncontributing resources in Cottle County Courthouse Historic District.  
Based on map prepared by Lila Knight for Texas Department of Transportation.



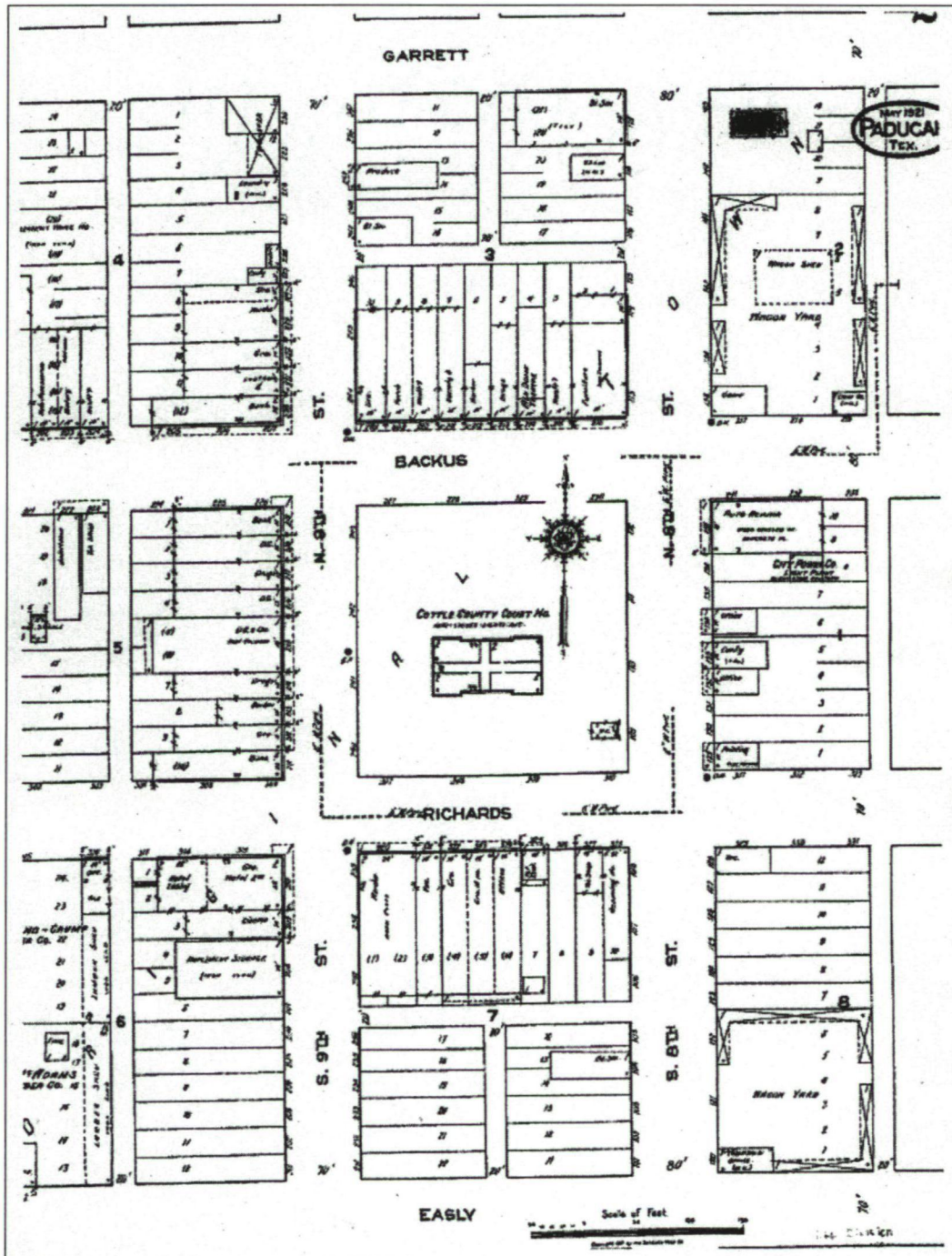
UNITED STATES DEPARTMENT OF THE INTERIOR  
National Park Service

# National Register of Historic Places Continuation Sheet

Cottle County Courthouse Historic District  
Paducah, Cottle County, Texas

Section FIGURE Page 33

Figure 1. Sanborn Insurance map of Cottle County Courthouse square and adjacent blocks, May 1921.



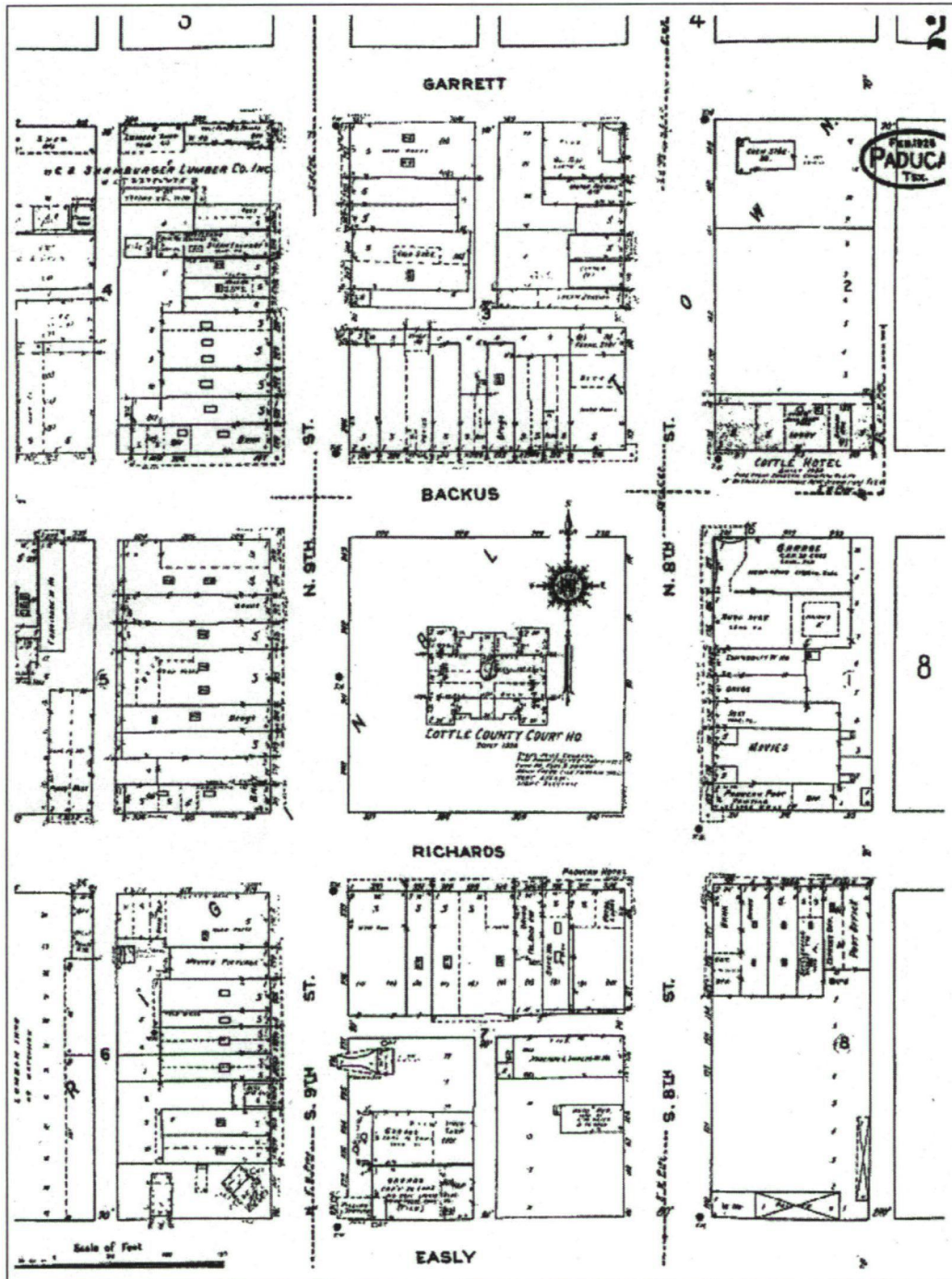
UNITED STATES DEPARTMENT OF THE INTERIOR  
National Park Service

# National Register of Historic Places Continuation Sheet

Cottle County Courthouse Historic District  
Paducah, Cottle County, Texas

Section FIGURE Page 34

Figure 2. Sanborn Insurance map of Cottle County Courthouse square and adjacent blocks, Oct. 1940.



UNITED STATES DEPARTMENT OF THE INTERIOR  
National Park Service

## National Register of Historic Places Continuation Sheet

Cottle County Courthouse Historic District  
Paducah, Cottle County, Texas

Section FIGURE Page 35

Figure 3. West side of Cottle County Courthouse square, 1949.



UNITED STATES DEPARTMENT OF THE INTERIOR  
National Park Service

## National Register of Historic Places Continuation Sheet

Section FIGURE Page 36

Cottle County Courthouse Historic District  
Paducah, Cottle County, Texas

Figure 4. Cottle County Courthouse, circa 1955.



DCH-117 COTTLE COUNTY COURT HOUSE, PADUCAH, TEX.

**UNITED STATES DEPARTMENT OF THE INTERIOR**  
**National Park Service**

National Register of Historic Places

**Continuation Sheet**

Section PHOTO Page 37

Cottle County Courthouse Historic District  
Paducah, Cottle County, Texas

---

**Photo Inventory**

**Cottle County Courthouse Historic District**  
**Roughly bounded by N. 7<sup>th</sup>, N. 10<sup>th</sup>, Garrett and Easley Streets**  
**Paducah, Cottle County, Texas**  
**Photographed by Bob Brinkman, April 2004**  
**Negatives on file at Texas Historical Commission**

Photo 1: 800 block Backus Street, north side of courthouse square, camera facing northeast

Photo 2: 800 block N. 8<sup>th</sup> Street, east side of courthouse square, camera facing southeast

Photo 3: 800 block Richards Street, south side of courthouse square, camera facing southwest

Photo 4: 800 block N. 9<sup>th</sup> Street, west side of courthouse square, camera facing northwest

Photo 5: Property 5 (left), Property 4 (right), east elevation, camera facing southwest

Photo 6: Property 6, east elevation, camera facing west

Photo 7: Property 14 (noncontributing), east elevation, camera facing west

Photo 8: Property 20, south elevation, camera facing north

Photo 9: Property 20, south elevation detail, camera facing north

Photo 10: Property 22 (left, noncontributing), Property 21 (right, contributing), Property 48 (brick streets, contributing),  
northeast oblique, camera facing southwest

Photo 11: Property 27, southwest oblique, camera facing northeast

Photo 12: Property 31, west elevation, camera facing east

Photo 13: Property 33 (noncontributing), southwest oblique, camera facing northeast

Photo 14: Property 41, southwest oblique, camera facing northeast

Photo 15: Property 53, northeast oblique, camera facing southwest

Photo 16: Property 54, southeast oblique, camera facing northwest

UNITED STATES DEPARTMENT OF THE INTERIOR  
NATIONAL PARK SERVICE

NATIONAL REGISTER OF HISTORIC PLACES  
EVALUATION/RETURN SHEET

REQUESTED ACTION: NOMINATION

PROPERTY Cottle County Courthouse Historic District  
NAME:

MULTIPLE  
NAME:

STATE & COUNTY: TEXAS, Cottle

DATE RECEIVED: 7/27/04 DATE OF PENDING LIST:  
DATE OF 16TH DAY: DATE OF 45TH DAY: 9/09/04  
DATE OF WEEKLY LIST:

REFERENCE NUMBER: 04000948

REASONS FOR REVIEW:

APPEAL: N DATA PROBLEM: N LANDSCAPE: N LESS THAN 50 YEARS: N  
OTHER: N PDIL: N PERIOD: N PROGRAM UNAPPROVED: N  
REQUEST: N SAMPLE: N SLR DRAFT: N NATIONAL: N

COMMENT WAIVER: N

ACCEPT  RETURN  REJECT 9/10/04 DATE

ABSTRACT/SUMMARY COMMENTS:

Entered in the  
National Register

RECOM./CRITERIA \_\_\_\_\_

REVIEWER \_\_\_\_\_ DISCIPLINE \_\_\_\_\_

TELEPHONE \_\_\_\_\_ DATE \_\_\_\_\_

DOCUMENTATION see attached comments Y/N see attached SLR Y/N

If a nomination is returned to the nominating authority, the nomination is no longer under consideration by the NPS.



800 BLOCK BACKUS STREET  
COTTLE COUNTY COURTHOUSE H.D.

PADUCAH, COTTLE CO., TEXAS

PHOTOGRAPH 1 of 16



800 BLOCK N. 8<sup>TH</sup> STREET  
COTTLE COUNTY COURTHOUSE H.D.

PADUCAH, COTTLE CO., TEXAS

PHOTOGRAPH 2 of 16



800 BLOCK RICHARDS STREET  
COTTLE COUNTY COURTHOUSE H.D.

PADUCAH, COTTLE CO., TEXAS  
PHOTOGRAPH 3 of 16



800 BLOCK N. 9<sup>TH</sup> STREET  
COTTLE COUNTY COURTHOUSE H.D.

PADUCAH, COTTLE CO., TEXAS

PHOTOGRAPH 4 of 16



700 BLOCK N. 9<sup>TH</sup> STREET  
COTTLER COUNTY COURTHOUSE H.D.

PADUCAH, COTTLER CO., TEXAS

PHOTOGRAPH 5 of 16



806-808 N. 9TH STREET  
COTTLE COUNTY COURTHOUSE H.D.

PADUCAH, COTTLE CO., TEXAS

PHOTOGRAPH 6 of 16



916-918 S. 9TH STREET  
COTTLE COUNTY COURTHOUSE H.D.

PADUCAH, COTTLE CO., TEXAS

PHOTOGRAPH 7 of 16

COURTHOUSE SQUARE

LOTTIE COUNTY COURTHOUSE H.D.

PADUCAH, LOTTIE CO., TEXAS

PHOTOGRAPH 8 of 16





COURTHOUSE SQUARE

COTTLE COUNTY COURTHOUSE H.D.

PADUCAH, COTTLE CO., TEXAS

PHOTOGRAPH 9 of 16



700 BLOCK N. 8<sup>TH</sup> STREET  
COTTLE COUNTY COURTHOUSE H.D.

PADUCAH, COTTLE CO., TEXAS

PHOTOGRAPH 10 of 16



700 BLOCK N. 8TH STREET  
COTTLE COUNTY COURTHOUSE H.D.

PADUCAH, COTTLE CO., TEXAS

PHOTOGRAPH 11 of 16



THE PADUCAH

ALACE

WELCOME SOROSIS CLUB

815-817 N. 8TH STREET  
COTTLE COUNTY COURTHOUSE H.D.

PADUCAH, COTTLE CO., TEXAS

PHOTOGRAPH 12 of 16



820 BACKUS  
COTTLE COUNTY COURTHOUSE H.D.

PADUCAH, COTTLE CO., TEXAS

PHOTOGRAPH 13 of 16



710-720 BACKUS

COTTLE COUNTY COURTHOUSE H.D.

PADUCAH, COTTLE CO., TEXAS

PHOTOGRAPH 14 of 16



800 BLOCK N. 7<sup>TH</sup> STREET  
COTTLE COUNTY COURTHOUSE H.D.

PADUCAH, COTTLE CO., TEXAS

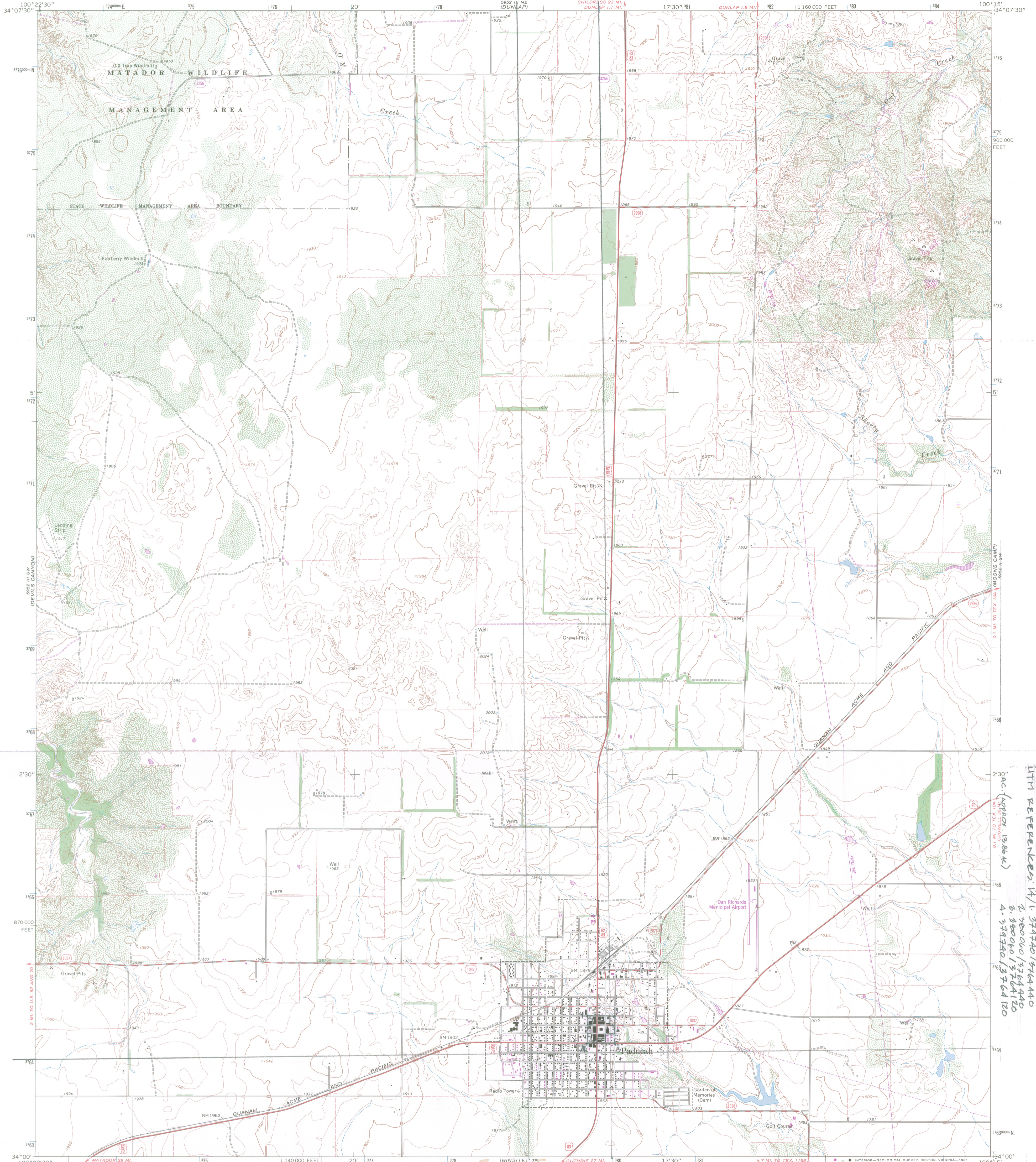
PHOTOGRAPH 15 of 16



800 BLOCK N. 7TH STREET  
COTTLER COUNTY COURTHOUSE H.D.

PADUCAH, COTTLER CO., TEXAS

PHOTOGRAPH 16 of 16

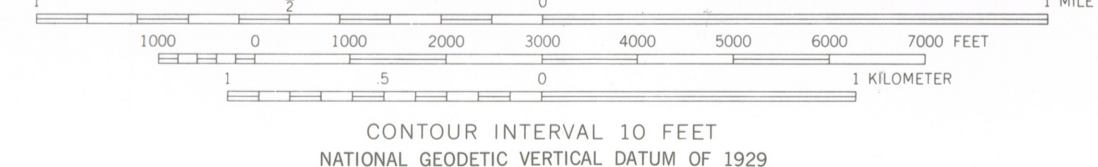


Mapped, edited, and published by the Geological Survey  
Control by USGS and USC&GS

Topography by photogrammetric methods from aerial  
photographs taken 1966. Field checked 1967  
Polyconic projection. 1927 North American datum  
10,000-foot grid based on Texas coordinate system,  
north central zone  
1000-meter Universal Transverse Mercator grid ticks  
zone 14, shown in blue

Fine red dashed lines indicate selected fence lines  
To place on the predicted North American Datum 1983  
move the projection lines 3 meters south and  
37 meters east as shown by dashed corner ticks

There may be private inholdings within the boundaries of  
the National or State reservations shown on this map



QUADRANGLE LOCATION

Revisions shown in purple compiled from aerial  
photographs taken 1979. Map edited 1981  
This information not field checked

3400-121

ROAD CLASSIFICATION

Heavy-duty	Light-duty
Medium-duty	Unimproved dirt
U.S. Route	State Route

PADUCAH, TEX.  
N3400-W10015/7.5

1967  
PHOTOREVISED 1981  
DMA 5952 III SE-SERIES V682

COTTLE COUNTY COURT HOUSE HISTORIC DISTRICT  
PADUCAH, COTTLE CO., TEXAS  
UTM REFERENCES: 14/1 374740 1374440  
2 380000 1374440  
3 380000 13744120  
4 374740 1374120  
5 374740 1374120



**TEXAS  
HISTORICAL  
COMMISSION**

Rick Perry • *Governor*  
John L. Nau, III • *Chairman*  
F. Lawrence Oaks • *Executive Director*

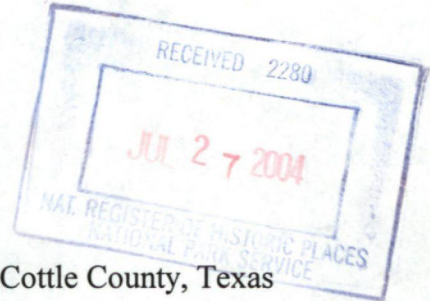
*The State Agency for Historic Preservation*

TO: Carol Shull, Keeper  
National Register of Historic Places

FROM: Gregory W. Smith, National Register Coordinator  
Texas Historical Commission

RE: Cottle County Courthouse Historic District, Paducah, Cottle County, Texas

DATE: July 21, 2004



The following materials are submitted regarding: Cottle County Courthouse Historic District, Paducah, Cottle County, Texas

<input checked="" type="checkbox"/>	Original National Register of Historic Places form
<input type="checkbox"/>	Resubmitted nomination
<input type="checkbox"/>	Multiple Property nomination form
<input checked="" type="checkbox"/>	Photographs
<input checked="" type="checkbox"/>	USGS map
<input type="checkbox"/>	Correspondence
<input type="checkbox"/>	Other:

COMMENTS:

SHPO requests substantive review

The enclosed owner objections (do ) (do not ) constitute a majority of property owners

Other \_\_\_\_\_

