

(Oct. 1990)

**United States Department of the Interior  
National Park Service  
NATIONAL REGISTER OF HISTORIC PLACES  
REGISTRATION FORM**



**1. NAME OF PROPERTY**

**HISTORIC NAME:** Arnold Bakery

**OTHER NAME/SITE NUMBER:** Reuter's Bakery, Black and White Café, Southern Barber Shop

**2. LOCATION**

**STREET & NUMBER:** 1010 East Eleventh Street

**CITY OR TOWN:** Austin

**STATE:** Texas

**CODE:** TX

**COUNTY:** Travis

**CODE:** 453

**NOT FOR PUBLICATION:** N/A

**VICINITY:** N/A

**ZIP CODE:** 78702

**3. STATE/FEDERAL AGENCY CERTIFICATION**

As the designated authority under the National Historic Preservation Act, as amended, I hereby certify that this  nomination  request for determination of eligibility meets the documentation standards for registering properties in the National Register of Historic Places and meets the procedural and professional requirements set forth in 36 CFR Part 60. In my opinion, the property  meets  does not meet the National Register criteria. I recommend that this property be considered significant  nationally  statewide  locally. (  See continuation sheet for additional comments.)

Signature of certifying official

12/1/2003

Date

State Historic Preservation Officer, Texas Historical Commission

State or Federal agency and bureau

In my opinion, the property  meets  does not meet the National Register criteria. (  See continuation sheet for additional comments.)

Signature of commenting or other official

Date

State or Federal agency and bureau

**4. NATIONAL PARK SERVICE CERTIFICATION**

I hereby certify that this property is:

- entered in the National Register  See continuation sheet.
- determined eligible for the National Register  See continuation sheet.
- determined not eligible for the National Register
- removed from the National Register
- other (explain): \_\_\_\_\_

Signature of the Keeper

Date of Action

1/14/04

**5. CLASSIFICATION**

---

**OWNERSHIP OF PROPERTY:** Private

**CATEGORY OF PROPERTY:** Building

<b>NUMBER OF RESOURCES WITHIN PROPERTY:</b>	<b>CONTRIBUTING</b>	<b>NONCONTRIBUTING</b>
	1	0 BUILDINGS
	0	0 SITES
	0	0 STRUCTURES
	0	0 OBJECTS
	1	0 TOTAL

**NUMBER OF CONTRIBUTING RESOURCES PREVIOUSLY LISTED IN THE NATIONAL REGISTER:** 0

**NAME OF RELATED MULTIPLE PROPERTY LISTING:** N/A

---

**6. FUNCTION OR USE**

---

**HISTORIC FUNCTIONS:** COMMERCE/specialty store = bakery; COMMERCE/restaurant=café

**CURRENT FUNCTIONS:** COMMERCE/business

---

**7. DESCRIPTION**

---

**ARCHITECTURAL CLASSIFICATION:** NO STYLE

**MATERIALS:** FOUNDATION WOOD, CONCRETE  
WALLS BRICK, STUCCO  
ROOF ASPHALT  
OTHER GLASS, METAL=Steel

**NARRATIVE DESCRIPTION** (see continuation sheets 7-5 through 7-10).

United States Department of the Interior  
National Park Service

## National Register of Historic Places Continuation Sheet

Section 7 Page 5

Arnold Bakery  
Austin, Travis County, Texas

The Arnold Bakery Building, constructed circa 1906, is one of the few remaining early commercial structures in east Austin. Just ten blocks east of the Texas State Capitol, the one-story building at 1010 East Eleventh Street is an intact example of the city's early 20<sup>th</sup> Century storefront buildings. Constructed with local sand-colored common brick, the building has a modified rectangular, C-shaped footprint with a non-contributing modern wing on the northeast corner, and a sloping flat roof. It features a raised, stepped parapet and six windows on the front façade, corbelled red brick cornice line, limestone windowsills, and distinctive, arched, red brick voussoirs above windows and doors. The building's interior walls incorporate original windowsills and frames, with reproduction window sashes and beadboard ceiling. The block immediately surrounding the property, once crowded with residences and small businesses, is currently vacant due to fires and demolitions.

The building faces south on the commercial corridor of East Eleventh Street, midway between Curve and Lydia Streets in the Robertson Hill neighborhood. It served the community as the bake house for the original 1892 Arnold Bakery until 1922, and remained in the Arnold family as Reuter's Bakery from 1923 to 1946. Vacant lots on either side of the site are scheduled to be replaced by community-planned commercial and retail space. Five minutes from the University of Texas, and two blocks across IH35 from Austin's downtown business district, the Arnold Bakery Building is a central feature of a new project planned to restore the cultural and economic viability of the neighborhood.

After 1947, the two bakery buildings at this site housed the Black & White Café, Southern Dinette Restaurant, Southern Barber Shop, and the Jolly Hour Recreation Club. An adjacent building, which included a second story residence, burned in 1990. The remaining Arnold Bakery Building was vacant for eight years before its sale to the Austin Revitalization Authority in 2001. Its current owners, David West and Scott Stricker of LDGD Investments, restored the building in 2002 for use as office space for Shoehorn Design. As a result of the restoration, the exterior of the Arnold Bakery Building retains a strong degree of architectural and historical integrity as well as integrity of location, materials, feeling and association. The owners worked closely with the City of Austin's Historic Landmark Commission throughout the restoration and received a certificate of appropriateness for their work on the building, which is a designated Austin Landmark. In November of 2002, the owners received a Merit Award from the Austin Heritage Society for adaptive use of a historical building.

### Setting

The Arnold Bakery Building, a fifteen-minute walk east from the State Capitol building, is located in the Robertson Hill neighborhood. The block is bounded on the west by Curve Street, on the south by East Eleventh, on the east by Waller Street, and on the north by Juniper Street. With the exception of the Arnold Bakery Building and two marginal homes directly behind it, the block surrounding the building is now vacant. The Austin Revitalization Authority (ARA)—a private, non-profit community development corporation—is currently developing more than 100,000 square feet of mixed-use retail and commercial space on either side of the Arnold Bakery Building, as well as over 20 homes in the surrounding area. The ARA plans to preserve and

United States Department of the Interior  
National Park Service

## National Register of Historic Places Continuation Sheet

Section 7 Page 6

Arnold Bakery  
Austin, Travis County, Texas

promote the area's rich cultural heritage and its historic structures—including the Arnold Bakery as well as the nearby Haehnel Building, Victory Grill and East Room—by using design to create the feeling of historic Austin in new construction. The ARA is committed to attracting minority-owned and local small businesses to the development. Eleventh Street itself is being renovated with new pavement and curbs, lighting and landscaping. A utilities upgrade currently underway will bury communications and power lines, and replace water, wastewater and stormwater lines.

An important source of identification and pride for the Robertson Hill area, the Arnold Bakery Building, with views of the Capitol and the Main Tower of the University of Texas, is located near several important east Austin landmarks. Most notable is the recently restored Haehnel Store Building (built c. 1880, NRHP listed 1985), diagonally east across the street at 1101 East Eleventh Street. Carl Haehnel operated a grocery store and lived upstairs in this building from 1895 to 1948, almost perfectly overlapping the time period of the bakery. More recently known as Shorty's Bar, it was also a hotel, a saloon and a brothel. Now owned by the ARA, the Haehnel Building currently provides office space.<sup>1</sup>

The Bailetti House at 1006 Waller Street (NRHP 1985), was constructed in 1886 for Salvatore Bailetti, who owned a drug and grocery store and saloon on the southeast corner of Waller and Eleventh Streets prior to Haehnel's store. Bailetti sold the Arnold Bakery site to H. Richard Arnold in 1892. Restoration is also planned for the East Room, two blocks away at 1154 Lydia, for use as the ARA headquarters. Originally home to the Schieffer family, owners of Eleventh Street's local meat market, it later became the Negro Agricultural Extension Office, then a restaurant and club, and finally a dilapidated bar. Crime in the area declined rapidly when it was shut down.<sup>2</sup>

The Arnold Bakery Building is surrounded by other important cultural and historical institutions. Across Eleventh Street from the Arnold Bakery Building is a 1949 Masonic Lodge and, just beyond that, the Ebenezer Baptist Church. On the northeast corner of Eleventh and Waller Streets is the 1947 Victory Grill (NRHP 1998), a restaurant and music club that entertained East Austinites and African-American soldiers from Fort Hood and Camp Swift after World War II. Three blocks south lies the 1841 French Legation (NRHP 1969) from which this neighborhood subdivision was originally carved. Three blocks east is the 1851 State Cemetery (NRHP 1986), and six blocks east is the historic Black college, Huston-Tillotson. The city's Oakwood Cemetery (NRHP 1985) is also nearby. Four blocks northeast lies the George Washington Carver Branch Library and adjacent Carver Museum and Cultural Center, a 1926 building, which focuses on local African-American history and culture. The area is also illuminated by one of Austin's Moonlight Towers (NRHP 1976).

<sup>1</sup> Austin Revitalization Authority. New Visions of Central East Austin: Phase One Redevelopment Projects.

<sup>2</sup> Austin Revitalization Authority. New Visions of Central East Austin: Phase One Redevelopment Projects.

United States Department of the Interior  
National Park Service

## National Register of Historic Places Continuation Sheet

Section 7 Page 7

Arnold Bakery  
Austin, Travis County, Texas

### Architectural Description

The original 1892 Arnold Bakery at this site was an adjacent, two-story frame house east of the current Arnold Bakery Building (see Figure 1). With an oven in a rear room, the frame building served as the bakery's storefront and home to the Arnold and Reuter families. The frame building was demolished and rebuilt as a brick and stucco storefront/residence (PICH 00616, circa 1970) between 1921 and 1935; it burned down in 1990.<sup>3</sup>

The **front façade** of the existing Arnold Bakery Building, facing south on East Eleventh Street, has been historically restored based on a 1906 photograph.<sup>4</sup> The brick face is original Austin common brick of a sand color. It features a raised, stepped parapet over the central of three original windows, limestone windowsills, corbelled red brick cornice line, and distinctively arched, red brick voussoirs over each of the six windows. Brick courses are primarily stretchers, with an occasional header row. The cornice line includes one single course of red stretchers followed by three courses of sand-colored stretchers, topped with three stepped courses of red stretchers and one final stepped course of red headers.

The 1906 building was about half its current length and had only three front windows. It is not known exactly when the building was expanded, although evidence points to a 1923 date of construction. The brick building first appears on a 1921 Sanborn map and was enlarged between 1921 and 1935 to include a larger oven.<sup>5</sup> In 1923, taxes were first assessed the Reuters on a portion of Lot #6, where the expansion was added, indicating that year as a probable expansion date.<sup>6</sup> The complete expansion included three additional bays, with identical red brick voussoir over all six windows. Two rows of headers form the arch directly above each window frame, with a stretcher's width of eight horizontal, tapering rows of alternating headers and stretchers framing the vertically. Two windows on the front façade were converted into doorways at a later unknown period, and the upper parts of those windows were also bricked in (see Figure 3). The current owners have restored the exterior to an historic appearance. One of the original limestone windowsills that had been converted to a doorsill was restored. The sill at the second window from the right (east) is a replica.

The **2002 wing** was built in the area that originally served as an enclosed corridor to the frame storefront/residence. The east wing includes bath, kitchen and library areas. The addition is set back to allow

<sup>3</sup> Austin American Statesman, Sept. 5, 1990, Section B. "Fire guts Southern Dinette building."

<sup>4</sup> PICA 02684 Austin History Center. AF: Bakers & Bakeries B0100: Arnold Bakery & Confectionery.

<sup>5</sup> The brick bake house is not shown in the 1900 Sanborn fire insurance map, but an oven is shown at the northwest, rear corner of the frame building. A 1921 Sanborn map includes the brick bake house and its oven in the northwest, rear corner. By 1935, the frame house has been replaced with a stucco building faced on the south and west sides with brick. The house to the west side, at 1008, no longer exists, and the extension and enlargement of the oven on the west side of the bake house is indicated. (See attached Sanborn map summary.) Travis County tax records indicate that improvements may have been made in 1906, with a valuation rise from \$565 to \$700, and again in 1908, when the valuation is raised from \$700 to \$3500. There is no other valuation increase through 1953.

<sup>6</sup> Travis County Tax Roll for 1923. Austin History Center.

United States Department of the Interior  
National Park Service

## National Register of Historic Places Continuation Sheet

Section 7 Page 8

Arnold Bakery  
Austin, Travis County, Texas

entry through an east-facing door at the original entryway. The front/south façade of the 2002 addition is stucco with a limestone veneer. A metal awning has been added over the entryway.

The **east façade** includes a glass and steel door at the original entry to the building near the southeast corner. There are now no other openings on this façade, but originally there were two doors. The central doorway, with its red brick voussoir, was reopened and remains an interior entry between the 2002 addition and the original bake house. The east façade was never visible, due to adjacent buildings, until the 1990 fire.

The **west façade**, also of Austin common brick, features a fixed transom window above a doorway originally used as a loading dock, and two windows, one on each side of the door, all with brick voussoir. The west parapet/roofline is stepped downward four times toward the north, rear facade. The lot slopes toward the north/rear, with the base increasing in height. The weight-bearing base of poured concrete is covered by stucco. Two small iron grates with a five-pointed star in each vent air at the foundation line.

The **rear or north façade** was partially altered in the 2002 restoration. It now features the stucco, glass and metal wing on the east side. The 'L' on the west end is the original oven room. The north and east walls of the 'L' are composed primarily of red brick. A rear bath addition, free standing on three sides (circa 1921-35) was in such disrepair that it required removal. Brick flues and a small doorway knocked into the bath had caused the original exterior wall to become unstable. It was rebuilt with its original brick after the wall collapsed. The rear entry, with a new steel and glass door, is an original doorway, complete with its red brick voussoir. Two arched windows were added to reflect the front window placement. Wood and metal decks were also added in 2002. The oven room features a small iron door at floor level for ash removal.

The rebuilt **roof** is a sloped, flat roof of composition tar, as was the historic roof. Photos of the north or rear façade depicts the skylight installed in 2002 (not visible from the street) and a metal awning around the 2002 addition. The **foundation** is original pier and beam. The bases of the walls in the east half of the building are stacked stone. The bases of the western expansion are poured concrete. The northwest "L" of the building, which was used as the oven room, has a concrete slab. All original exterior walls and wall bases are load bearing.

### 2002 Restoration

Architect Emily Little supervised the 2002 restoration, which included the stabilization of existing masonry walls, roof, and floor framing, and the addition of an east wing. The 1906 Arnold Bakery photo<sup>7</sup> used as the basis for the historical restoration, produced a strong level of historical and architectural integrity in the building. Most of the long-leaf pine ceiling and floor joists are original. Those few requiring replacement were re-milled and used to cap interior room dividers.

<sup>7</sup> PICA 02684 Austin History Center. AF: Bakers & Bakeries B0100: Arnold Bakery & Confectionery.

United States Department of the Interior  
National Park Service

## National Register of Historic Places Continuation Sheet

Section 7 Page 9

Arnold Bakery  
Austin, Travis County, Texas

A new **roofing system** replaced the existing roof, which leaked during the eight-year period of vacancy and caused irreparable damage to the ceiling and floor.<sup>8</sup> A narrow, raised skylight over the west end of the building was added (it is not visible from the street). The interior ceiling was replaced with new beadboard to match the original beadboard ceiling. **Floors** had also rotted and were replaced with plywood and carpet. Original flooring was long leaf pine. Inside, new electrical wiring, plumbing, and HVAC were added for the entire project. Interior windowsills and frames are original; double-hung sashes with two-over-two vertical lights are reproductions. The existing wall finishes were painted.

The east wing is constructed of stucco with a limestone veneer on the south face. The modern wing is located in approximately the same area as the corridor between the two original buildings (see Figure 1). The new hardscape on the addition consists of a wood deck on the north or rear side, with concrete porch and metal awnings and a new scored and stained concrete entry, which is ADA accessible, at the southeast corner. All work was approved with a certificate of appropriateness by the City of Austin's Historic Landmark Commission. Materials of the 2002 addition (metal, stucco, steel and glass) clearly delineate the historic versus non-historic parts of the building.

Brick infill on all **exterior walls** is from original Austin common bricks found under the flooring, dating from the time the 1906 west wall was knocked down to enlarge the building, circa 1923. About three-quarters of the east and north walls of the oven extension are composed of red bricks stamped with the word 'Texas' and may have been walls of the 1906 oven room. A small retaining wall, using original brick, has been added at the front for landscaping purposes. A sidewalk separates the site from the street.

### Floor Plan

The floor plan consists of the rectangular space of the 1906 building plus the larger L-plan on the west end that includes the circa 1923 expansion with oven space. The modern east wing (bath/kitchenette/library) is non-contributing (see architectural floor plans). Entry from the street is through a reception area. To the immediate left is a conference room. The large, open west area is partitioned into offices and workspace with walls five feet in height. Moving back through a central area for office and copy machines, one returns to the receptionist's area and its arched entry into the modern wing.

There are no outbuildings or landscape features historically associated with the Arnold Bakery Building. According to Dick Reuter, grandson of Max Reuter and great-grandson of Richard Arnold, a covered drive to the rear loading dock at one time entered the property on the west side of the building. Remnants of that concrete drive are still present.

---

<sup>8</sup> The building was first zoned historic by the City of Austin in 1981. The owners in 1991 requested that designation be removed. The building was abandoned between 1988 and 2001.

United States Department of the Interior  
National Park Service

## National Register of Historic Places Continuation Sheet

Section 7 Page 10

Arnold Bakery  
Austin, Travis County, Texas

---

### Conclusion

The east Austin community has felt the impact of physical and social change, neighborhood deterioration and urban renewal in the last century, yet the Arnold Bakery Building remains a strong historical anchor. It is a rare, surviving example of a turn-of-the-20<sup>th</sup> Century commercial building in what was once a lively commercial corridor. The surrounding setting is much changed, but the building's location, materials, workmanship and exterior design retain the building's historical and architectural integrity and justify its listing in the National Register of Historic Places. Although the east wing has altered the east façade of the building, that façade was never visible. It was first connected directly to the original frame house by a corridor, and then obscured until 1990 by a two-story brick building. The Arnold Bakery Building still retains the identifying physical features of the circa 1906 building and its circa 1923 expansion. It is not hard to imagine the fragrance of freshly baked bread wafting from its windows. As a significant landmark in the community for almost a century, the Arnold Bakery Building will contribute its history as a cornerstone of east Austin's revitalization.

---

**8. STATEMENT OF SIGNIFICANCE**

---

**APPLICABLE NATIONAL REGISTER CRITERIA**

- A** PROPERTY IS ASSOCIATED WITH EVENTS THAT HAVE MADE A SIGNIFICANT CONTRIBUTION TO THE BROAD PATTERNS OF OUR HISTORY.
- B** PROPERTY IS ASSOCIATED WITH THE LIVES OF PERSONS SIGNIFICANT IN OUR PAST.
- C** PROPERTY EMBODIES THE DISTINCTIVE CHARACTERISTICS OF A TYPE, PERIOD, OR METHOD OF CONSTRUCTION OR REPRESENTS THE WORK OF A MASTER, OR POSSESSES HIGH ARTISTIC VALUE, OR REPRESENTS A SIGNIFICANT AND DISTINGUISHABLE ENTITY WHOSE COMPONENTS LACK INDIVIDUAL DISTINCTION.
- D** PROPERTY HAS YIELDED, OR IS LIKELY TO YIELD, INFORMATION IMPORTANT IN PREHISTORY OR HISTORY.

**CRITERIA CONSIDERATIONS:** N/A

**AREAS OF SIGNIFICANCE:** COMMERCE

**PERIOD OF SIGNIFICANCE:** c. 1906-1953

**SIGNIFICANT DATES:** c. 1906

**SIGNIFICANT PERSONS:** N/A

**CULTURAL AFFILIATION:** N/A

**ARCHITECT/BUILDER:** unknown

**NARRATIVE STATEMENT OF SIGNIFICANCE** (see continuation sheets 8-11 through 8-17)

---

**9. MAJOR BIBLIOGRAPHIC REFERENCES**

---

**BIBLIOGRAPHY** (see continuation sheets 9-18 through 9-19).

**PREVIOUS DOCUMENTATION ON FILE (NPS):** N/A

- preliminary determination of individual listing (36 CFR 67) has been requested.
- previously listed in the National Register
- previously determined eligible by the National Register
- designated a National Historic Landmark
- recorded by Historic American Buildings Survey
- recorded by Historic American Engineering Record

**PRIMARY LOCATION OF ADDITIONAL DATA:**

- State historic preservation office (*Texas Historical Commission*)
- Other state agency
- Federal agency
- Local government (Austin History Center)
- University (Center for American History, University of Texas at Austin)
- Other -- Specify Repository:

United States Department of the Interior  
National Park Service

## National Register of Historic Places Continuation Sheet

Section 8 Page 11

Arnold Bakery  
Austin, Travis County, Texas

The 1906 Arnold Bakery Building was built for Richard Arnold, who established a bakery on this site in 1892.<sup>9</sup> The commercial building, which served as a bake house, is inextricably linked with the social and ethnic ebb and flow of the central east Austin neighborhood known as Robertson Hill. The community evolution from mixed races and economic levels to one of African-American segregation offers important documentation of life in Austin and in the South. The Arnold family remained in the neighborhood as merchants and residents for over fifty years of this transition period.

The period of significance, 1906-1953, includes 47 years of the building's history as a family bakery and covers time spent as a restaurant and bar for African-Americans. Established by a family of German immigrants, the bakery provided sustenance and sweets to all, regardless of the changing times and colors, thereby complementing and supporting the daily lives of the people who lived and worked in the surrounding neighborhood. The site's history of use and ownership over the past century reflects the changes in the community's economic and social status and in the city's racial attitudes. As the area prepares to undergo yet another change through a planned revitalization, the Arnold Bakery Building will once again anchor the community's commercial core. The Arnold Bakery is nominated for listing in the National Register of Historic Places under Criterion A in the area of Commerce at the local level of significance.

### Founding and History of central east Austin

East Eleventh Street has long served the central east Austin community as a commercial corridor. The area has been ethnically diverse since the 1870s, when the surrounding neighborhood began drawing European immigrants as well as slaves freed after the Civil War.

The George L. Robertson Subdivision, known as Robertson Hill, was carved out of the front yard of east Austin's 1841 French Legation. It is named for the eldest son of Dr. Joseph William Robertson (1809-1870)—a former ranger, early Austin physician and 1843-44 mayor of Austin—and his second wife, Lydia Lee,<sup>10</sup> Dr. Robertson brought his family to Austin in 1840 and established an apothecary shop on Congress Avenue. In 1848 he paid \$2000 for the French Legation, the former home of French Ambassador de Saligny,<sup>11</sup> and lived there until his death. The hill itself thus became associated with Robertson's name.<sup>12</sup>

At a sheriff's sale during the 1850s, Dr. Robertson purchased several parcels of the heavily wooded area one mile east of the Capitol. When Robertson learned in 1869 that he was dying of consumption, he subdivided this

<sup>9</sup> Austin City Directory, 1892.

<sup>10</sup> Barkley p. 156; Cutrer.

<sup>11</sup> Hardy, Heck, Moore & Associates, Inc. "Archival and Historical Research for the George L. Robertson Subdivision of Outlot 55, Division B." Report prepared for the Anderson Community Development Corporation, page 15.

<sup>12</sup> Barkley p 156.

United States Department of the Interior  
National Park Service

## National Register of Historic Places Continuation Sheet

Section 8 Page 12

Arnold Bakery  
Austin, Travis County, Texas

land and sold the first lot, Lot #6 on Mesquite Street, to Malick Wilson, a Freedman, for \$100.<sup>13</sup> The western expansion of Arnold Bakery lies on the eastern portion of Lot #6. Purchases of Robertson's lots increased between 1870 and 1874 with the arrival of rail in Austin in December of 1871, linking east Austin to west Austin via the east/west running Houston & Texas Central Railroad, then on Sixth Street. A bridge across Waller Creek connecting east Austin to the downtown business district was also completed in 1871. Mesquite Street (East Eleventh) was the southern boundary of the Robertson Subdivision of Outlot 55, Division B.

Other land in the area was owned by Irish, Swedish, French and German immigrants, freed slaves (35% of the Austin population was African-American in the late 1860s), Anglo-Americans and various investors. The suburban community began as a racially, ethnically and economically mixed population, but east Austin became divided along color lines as east Austin businesses and institutions served an increasing number of African-American and Hispanic residents after 1900. By 1910 the Robertson Hill neighborhood consisted almost entirely of African-American residents.<sup>14</sup> Over the years the African-American and Hispanic populations increased, and in 1928 the city adopted a master plan to segregate Blacks by limiting municipal services and schools for African-Americans to east Austin. By the 1940s and 50s, Eleventh and Twelfth Streets became the commercial centers of African-American life, with more than 50 African-American businesses that included the Deluxe Hotel, Harlem Cab Company, grocery stores, restaurants and clubs, the Harlem Theater, barber and beauty shops, and two business schools. In the early 1950s, the construction of the north-south Interstate Highway 35 sealed the fate of east Austin by dividing it physically from the rest of the city. Beginning in the 1960s, after Civil Rights legislation requiring desegregation, the neighborhood fell into a long decline.

Today's east Austin is composed primarily of African-American and Mexican-American cultural groups. Many landmarks burned down or have been demolished, and many of the vacant lots are now owned by the city. The Texas Department of Transportation's plans to lower IH-35 between the Colorado River and 38<sup>th</sup> Street, thereby reconnecting east Austin to west Austin, will undoubtedly have a dramatic effect on the future of East Eleventh Street and the residents of Robertson Hill.

### Historical Development of Lot #21, Outlot 55, Division B

According to the 1877 city directory, an African-American man named **Moses Keiling** (or Keeling) lived on the "north side of Mesquite near the eastern city limits." Keiling was assessed a tax value of \$350 on the lot prior to 1879.<sup>15</sup> He purchased property from **Myra Farris**, who had received it directly from George Robertson in 1871. Between 1880-85, the property passed to **William Frazier**.<sup>16</sup> Frazier was assessed a tax value of \$200 on the lot

<sup>13</sup> Hardy, Heck, Moore & Associates, Inc. "Archival and Historical Research for the George L. Robertson Subdivision of Outlot 55, Division B." August, 1997. Page 2, 14-17. Available at the Austin History Center.

<sup>14</sup> Hardy, Heck, Moore & Associates, Inc. "Archival and Historical Research for the George L. Robertson Subdivision of Outlot 55, Division B." pages 5, 13.

<sup>15</sup> Travis County Tax Roll "prior to 1879." Austin History Center (see attached summary).

<sup>16</sup> Historic Resources Inventory Form. East Austin Survey, City of Austin. September 2000.

United States Department of the Interior  
National Park Service

## National Register of Historic Places Continuation Sheet

Section 8 Page 13

Arnold Bakery  
Austin, Travis County, Texas

from 1879 to 1885. Lydia Lee Robertson, Joseph Robertson's second wife, sold Lot #21 to Salvatore Bailetti in March of 1889. The sale by George Robertson to Myra Farris is referenced in that deed.<sup>17</sup> Bailetti sold the lot to Richard Arnold in September of 1892.<sup>18</sup>

### History of Arnold Bakery

**H. Richard Arnold** was born in Germany in 1852 and emigrated to America in 1881. His wife, Anna Bilz, and daughter, Rosa, followed him in 1882. "Richard Arnold, baker" is first listed in the 1883-84 Austin City Directory.

By 1887, when Arnold's first son is born, he is listed in the city directory as a baker at the **Lundberg Bakery** (now the "Old Bakery," 1006 Congress Avenue, NRHP 1969) which was built by Swedish immigrant Charles Lundberg in 1876. It is interesting to note that four of the early Lundberg bakers went on to establish bakeries of their own. Baker Henry Maerki, who immigrated from Switzerland in 1890 and would later establish Maerki's Bakery<sup>19</sup> was employed by Lundberg.<sup>20</sup> Maerki's daughter is pictured in 1906 photos with the Arnold family (see Figure 2). The foreman employed at Lundberg's, Frank R. Zakrison, established the Lone Star Bakery at 412 East Sixth Street, and later owned the East Austin Bakery for about 25 years. A fourth baker at Lundberg's established Stolley Bakery.<sup>21</sup>

In 1889-90, Arnold is listed in the City Directory as resident and proprietor of Texas Bakery at 414 East Sixth Street. It is in 1891-92 that Arnold is first listed at 1010 East Eleventh Street; his bakery is one of eight in Austin at the time, and the only bakery in east Austin. In 1893-94 the shop is listed as a bakery and confectionery, now one of eleven bakeries in the city and one of two in east Austin. The family operated the bakery and store below their living accommodations in a two-story frame building, demolished about 1923 and replaced with a second, brick-faced, two-story residence/storefront.

In 1894 **Max Reuter** (pronounced Roo-ter) immigrated from Germany; he is shown as a boarder in the Arnold household in the 1900 Census.<sup>22</sup> Reuter soon married Arnold's eldest daughter, Rosa. In 1906 Richard Arnold bought the adjacent lot and home at 1012 East Eleventh, just east of the storefront/residence, where the Reuters lived until 1922.

<sup>17</sup> Travis County Deeds. Volume 86 Number 23-25. 3/7/1889. Lot #21, Outlot 55, Division B.

<sup>18</sup> Travis County Deeds. Volume 113 Number 369. 9/2/1892. Lot #21, Outlot 55, Division B.

<sup>19</sup> The brick bakery Maerki later erected is now the home of Katz's Deli on West Sixth at Rio Grande.

<sup>20</sup> Maerki lived above the Lundberg Bakery and bought it from Lundberg's widow in 1895. In 1906 he sold that business and built a new bakery at 6<sup>th</sup> and Rio Grande. His daughter Minna Mae Maerki (Mrs. Carl B. Sterzing) was born at the Lundberg Bakery and is shown with Richard Arnold's children in two 1906 photos taken at the Arnold Bakery. Maerki and Lundberg family biographical files, Austin History Center.

<sup>21</sup> Barkley p 147.

<sup>22</sup> U.S. Census for Travis County, 1900. Texas State Archives. Reel 1673. V. 102, ED 94, Sheet 1, Line 62.

United States Department of the Interior  
National Park Service

## National Register of Historic Places Continuation Sheet

Section 8 Page 14

Arnold Bakery  
Austin, Travis County, Texas

Arnold's eldest granddaughter, Meta Reuter, was born in February of 1904. The earliest known photo of the brick portion of Arnold Bakery<sup>23</sup> includes Meta at about age two in the arms of her grandfather, thus dating the building's construction to circa 1906.<sup>24</sup> An increase in Arnold's property taxes in 1906, from \$565 to \$700, while the adjacent property rate was unchanged, is another indication of construction. A further jump from \$700 to \$3500 in 1908 may also confirm the construction.

Arnold's wife, Anna Bilz Arnold, died in January of 1922. That year Rosa and Max Reuter became the owners of the bakery, changing its name to **Reuter's Bakery**. In 1923 the Reuters paid taxes for the first time on a portion of Lot #6 on the west side of the bake house, dating its expansion to circa 1923.

**Carl Stengel**, husband of Arnold's daughter Margaret, also worked in the bakery from about 1919 until 1922, when Stengel and his family moved to a home at 2113 Manor Road (currently known as East Side Café) and opened Stengel's Sandwich Shop next door.<sup>25</sup>

Arnold remarried and, according to City Directories, resided a few blocks away at 1166 San Bernard from 1927 to 1934, and at 1170 San Bernard (NRHP 1985) from 1935 until his death in 1945 at the age of 93.<sup>26</sup> Arnold had purchased the home from Lundberg's widow in 1899.<sup>27</sup> According to his obituary, Arnold was a member of St. Martin's Lutheran Church and Saengerunde – a German singing club.<sup>28</sup> He, Bailetti, and George Robertson were associated with the East Austin Hose Company No. 4 begun in 1886 at the fire hall between 10<sup>th</sup> and 11<sup>th</sup> on Lydia Street.<sup>29</sup>

The neighborhood continued to reflect diverse ethnic and cultural influences in the early 20<sup>th</sup> Century, as seen in businesses such as Succetti Brothers Grocery at 1000 E. 11<sup>th</sup> Street and Clito Alvarez Shoe Repair at 1106 E. 11<sup>th</sup> Street.<sup>30</sup> But by 1946, the neighborhood surrounding the Arnold Bakery Building had transformed from a richly mixed ethnic and cultural area to one of more homogeneity, with an almost solely African-American enclave as a result of years of enforced city segregation. Segregation patterns were accelerated by the city's

<sup>23</sup> Austin History Center PICA 0684. A photo of the family dated 1906, PICB 00200, appears to have been taken on the same day; clothing of the family appears to be identical.

<sup>24</sup> Also see supplemental documentation on Sanborn Maps, continuation sheet 8-x.

<sup>25</sup> Carl Stengel's son, Bobby Burford Stengel, born 2/17/1939, and his two daughters are the only descendants of Arnold now living in Austin. Interviewed in October of 2002, Bobby Stengel provided information about the family tree and loaned photographs and the scrapbook of his sister, Anna Stengel, to the Austin History Center.

<sup>26</sup> Since a church was built in 1929 at the corner that would now be #1166, it is assumed that the house number changed. 1170 San Bernard, known as the Arnold House, is an Austin Landmark and is listed in the National Register as "House at 1170 San Bernard."

<sup>27</sup> City of Austin Historic Landmark Commission File C14h-85-006, 1170 San Bernard, The Arnold House. Also see ownership records, attached.

<sup>28</sup> Austin American Statesman. Obituary of Richard Arnold, 8/20/1945. Austin History Center Biographical File.

<sup>29</sup> Barkley p. 236.

<sup>30</sup> Austin City Directory, 1924.

United States Department of the Interior  
National Park Service

## National Register of Historic Places Continuation Sheet

Section 8 Page 15

Arnold Bakery  
Austin, Travis County, Texas

refusal to upgrade infrastructure and transportation routes, and by the construction of Interstate Highway 35, a limited access freeway, along the north-south running East Avenue that had marked the eastern boundary of the original platted town of Austin.<sup>31</sup>

In 1946, the Reuters sold the property at 1010 East Eleventh to Jimmie and Georgia Owens, who owned it until 1976. In those years, the property was the home of the Black & White Café, Southern Barber Shop, Jolly Hour Recreation Club, and the Southern Dinette Restaurant. All were owned and operated by African-Americans. The Southern Dinette served “comfort food” and was frequented by African-Americans and students from the University of Texas. Across the street, the Haehnel Building served as Shorty’s Bar, which joined the Victory Grill as stops on the “Chitlin Circuit,” a nationwide system of nightclubs where African-American entertainers performed.<sup>32</sup> Businesses on the block served a variety of commercial and institutional functions for the African-American community well beyond the period of significance for this nomination, which ends in 1953. The Southern Dinette, for example, was active until the building was destroyed by fire in 1990.<sup>33</sup>

### Conclusion

The building meets Criteria A at the local level of significance. The Arnold Bakery, in providing the very bread of life for central east Austin for over half a century, was a very important early commercial enterprise in the area. The Arnold Bakery Building has been significantly associated with the events and activities in its local community throughout its lifetime – first as a bakery established and operated by a family of German immigrants in an ethnically, socially, and racially diverse community; and then, reflecting the changing times and attitudes of the population, as an African-American restaurant, barbershop and club in a racially segregated community.

The exterior façade of the Arnold Bakery Building is virtually identical to that of the 1906 building with its circa 1923 expansion, retaining its integrity of original design to a high degree by virtue of its 2002 restoration. It retains integrity in its location and relationship to surrounding streets, and in its association with other landmark properties such as the 1880 Haehnel Grocery Store Building, the East Room/Schieffer home, the 1841 French Legation and the 1851 State Cemetery. The National Register’s “Historic and Architectural Resources of East Austin” includes the Haehnel Building, German American Ladies College at 1604 East Eleventh, Wesley United Methodist Church at 1164 San Bernard, the Arnold House at 1170 San Bernard, and the Oakwood Cemetery at 16<sup>th</sup> and Navasota.

The 2002 addition has made a minimal impact on the historic integrity of the building because of its placement in an area that was historically a corridor between two buildings. The contemporary wing, which is obviously

<sup>31</sup> “Historic and Architectural Resources of East Austin,” NRHP file.

<sup>32</sup> Vann, “Jimmie and Georgia.”

<sup>33</sup> Tharp and Webb, “Fire sears historic Victory Bar & Grill.”

United States Department of the Interior  
National Park Service

## National Register of Historic Places Continuation Sheet

Section 8 Page 16

Arnold Bakery  
Austin, Travis County, Texas

---

not meant to evoke a historic structure, is set back from the front façade by eight feet to further define the distinction between the historic and modern sections. The use of modern materials also clearly differentiates the new from the old. As a rare, surviving commercial building in east Austin, the designation of the Arnold Bakery Building as an historic building is an important keystone in the future revitalization of this commercial corridor and in the preservation of its history.

The Arnold Bakery retains integrity of design, materials, workmanship, location and feeling to a high degree. The integrity of association and setting are reduced because of surrounding vacant land in what was once a bustling commercial corridor. But as a rare surviving property along one of Austin's historic commercial avenues, the Arnold Bakery remains a significant property and qualifies for listing in the National Register of Historic Places.

United States Department of the Interior  
National Park Service

# National Register of Historic Places Continuation Sheet

Section 8 Page 17

Arnold Bakery  
Austin, Travis County, Texas

## Supplemental Documentation Arnold Bakery Time Line

- 1852 Richard Arnold born in Germany
- 1859 Original Grant and patent of land to Joseph W. Robertson 11/18/59
- 1877c Rosa born to Richard Arnold and Anna Bilz Arnold in Germany 12/77
- 1881 Richard Arnold immigrates to America from Germany
- 1882 Wife and Rosa immigrate to Texas from Germany
- 1883-84 Arnold first listed in City Directory as a baker, residence 1606 San Antonio
- 1885-86 Arnold, baker, residence 604 East Walnut
- 1887 Son Willie born in April
- 1887-88 Baker, S. Lundberg [Old Bakery], residence es Red River bt. East 19<sup>th</sup> & 20<sup>th</sup>
- 1889-90 Arnold is proprietor, Texas Bakery 414 East 6<sup>th</sup>, residence same
- 1889 Robertson deeds Lot #21 to Bailetti 3/7/89**
- 1891 Bird's Eye map shows 3 clusters of buildings on block, but not recognizable
- 1891-92 Richard Arnold, 1010 East 11<sup>th</sup>, bakery, residence same (1 of 8 bakeries listed)**
- 1892 **Bailetti deeds Arnold Lot #21 9/2/92**
- 1893-94 Richard Arnold, bakery and confectionery, residence (1 of 11 bakeries)
- 1894 Max Reuter immigrated from Germany
- 1898 R.L. Brown grants 'Release' to Arnold on Lot #21 9/9/98
- 1899 Granddaughter Margaret Stengel born Nov.
- 1899 Arnold buys Lot #2, Block 6, San Bernard home from Lundberg's widow in Oct.
- 1895-1914 Richard Arnold, 1010 E. 11<sup>th</sup>, bakery, groceries, residence
- 1900 Sanborn maps show frame building at 1010 w/ oven; brick building not present**
- 1906 Photo with brick bakery, date based on Meta, b. 2/1904**
- 1906 Photo on back steps of bakery, frame building, dated 1906
- Arnold buys Lot #22 (1012 E. 11<sup>th</sup>) where Rosa & Max Reuter live by 1908
- 1922 Wife dies in Jan.; Arnold grants 1010 E. 11<sup>th</sup> property to four children in April
- 1922 Max Reuter, baker, residence 1012 East 11<sup>th</sup>
- 1923 First listing on tax roll of portion of Lot #6 in Reuters' name
- 1924 Arnold not listed in City Directory
- 1927-42 Max Reuter, proprietor Reuter Bakery, 1010 East 11<sup>th</sup>, r. 1012
- 1927-30... Richard Arnold and new wife Marie live at 1166 San Bernard
- 1935-45 Richard Arnold (Maria) live at 1170 San Bernard (probable number change)
- 1935 Sanborn maps show brick building and new stucco/brick storefront, 1010 E. 11<sup>th</sup>
- 1944-45 Reuter Bakery, Max & Rosa r. 1010 E. 11<sup>th</sup>
- 1945 Richard Arnold dies in August at age 93. Home is 1170 San Bernard
- 1947 Black & White Café
- 1948 San Bernard property sold by Rosa, Max, Johanna

United States Department of the Interior  
National Park Service

## National Register of Historic Places Continuation Sheet

Section 9 Page 18

Arnold Bakery  
Austin, Travis County, Texas

---

### Bibliography

Arnold, Richard. Biography file. Available at Austin History Center.

Austin City Directories, 1872-1984. Available at Austin History Center.

Austin Revitalization Authority. "New Visions of Central East Austin: Phase One Redevelopment Projects."

Bakeries. Subject file. Available at Austin History Center.

Barkley, Mary Starr. *History of Travis County and Austin 1839-1899*. Austin, Texas: Steck & Company, 1963.

City of Austin Historic Landmark Commission File C14h-85-006: 1170 San Bernard, The Arnold House. City Historic Preservation Office, Department of Transportation, Planning and Sustainability, City of Austin.

City of Austin Historic Landmark Commission File C14H-01-0002: Arnold Bakery. City Historic Preservation Office, Department of Transportation, Planning and Sustainability, City of Austin.

CM& N Surveying Company, Austin, Texas. Sketch to Accompany Legal Description for Arnold Bakery Building at 1010 East Eleventh Street.

Cutrer, Thomas W. "Robertson, Joseph William." In New Handbook of Texas. Austin: Texas State Historical Association, 1996.

Deed Records, Travis County, Texas. Available at Travis County Courthouse, Austin, Texas.

Hardy, Heck, Moore & Associates, Inc. "Archival and Historical Research for the George L. Robertson Subdivision of Outlot 55, Division B." Report prepared for the Anderson Community Development Corporation. Copy available in Austin History Center.

Heritage Society of Austin. "Historic Austin: A Collection of Walking/Driving Tours"

"Historic Resources of East Austin," National Register of Historic Places Multiple Property Documentation Form, 1985. Copy on file at the Texas Historical Commission, Austin, Texas.

Historic Zoning Map for Case #C14H-01-0002, City of Austin. (City Grid Reference #K22, J22)

Humphrey, David C. *Austin: An Illustrated History*. Northridge, CA: Windsor Publications, 1985.

United States Department of the Interior  
National Park Service

## National Register of Historic Places Continuation Sheet

Section 9 Page 19

Arnold Bakery  
Austin, Travis County, Texas

---

### **Bibliography (continued)**

Koch, Augustus. Birdseye View of Austin, Texas. Map. 1873, 1887.

Mears, Michelle M. "African American Settlement Patterns in Austin, Texas:1865-1928." Master's thesis, Baylor University, Waco, Texas, 2001.

Riley, Karen and Lindsey, Eva. Interview of Rev. Israel Jacob Fontaine. July 8, 2000. Austin History Center Oral History Transcript.

Sanborn Map and Publishing Company. Austin, Texas. New York: The Sanborn Map and Publishing Company, Ltd. 1900, 1921, 1935, 1959. Center for American History, University of Texas at Austin.

Stengel Family scrapbook now belonging to Bobby Burford Stengel. Copies of significant photos in Austin History Center.

Tharp, Robert and Janet Webb. "Fire sears historic Victory Bar & Grill." In the Daily Texan, October 11, 1988, p. 7.

Vann, Mick. "Jimmie and Georgia." In the Austin Chronicle, July 4, 2003, p. 52.

---

**10. GEOGRAPHICAL DATA**

---

**ACREAGE OF PROPERTY:** 0.758 acres

**UTM REFERENCES**      Zone Easting    Northing  
                                 14    622220    3349140

**VERBAL BOUNDARY DESCRIPTION** 0.0758 acre tract, more or less, out of (southerly portion) Lot 6 and Lot 21 of Robertson Subdivision, Outlot 55, Division B, City of Austin, Travis County, Texas. See attached survey for metes and bounds.

**BOUNDARY JUSTIFICATION** The boundary encompasses the property historically associated with the resource.

---

**11. FORM PREPARED BY** (with assistance of Bob Brinkman, Texas Historical Commission)

---

**NAME/TITLE:** Phoebe S. Allen, researcher

**ORGANIZATION:**

**DATE:** December 31, 2002

**STREET & NUMBER:** 2510 Cedarview Drive

**TELEPHONE:** (512) 444-1326

**CITY OR TOWN:** Austin

**STATE:** Texas

**ZIP CODE:** 78704

---

**ADDITIONAL DOCUMENTATION**

---

**CONTINUATION SHEETS** (see continuation sheets FIGURE-22 through FIGURE-25)

**MAPS** (see continuation sheets MAP-20 through MAP-21 and topographic map)

**PHOTOGRAPHS** (see continuation sheet PHOTO-26)

**ADDITIONAL ITEMS**

---

**PROPERTY OWNER**

---

**NAME:** David West & Scott Stricker, LDGD Investments

**STREET & NUMBER:** 1010 East Eleventh Street

**TELEPHONE:** (512) 478-4190

**CITY OR TOWN:** Austin

**STATE:** Texas

**ZIP CODE:** 78702

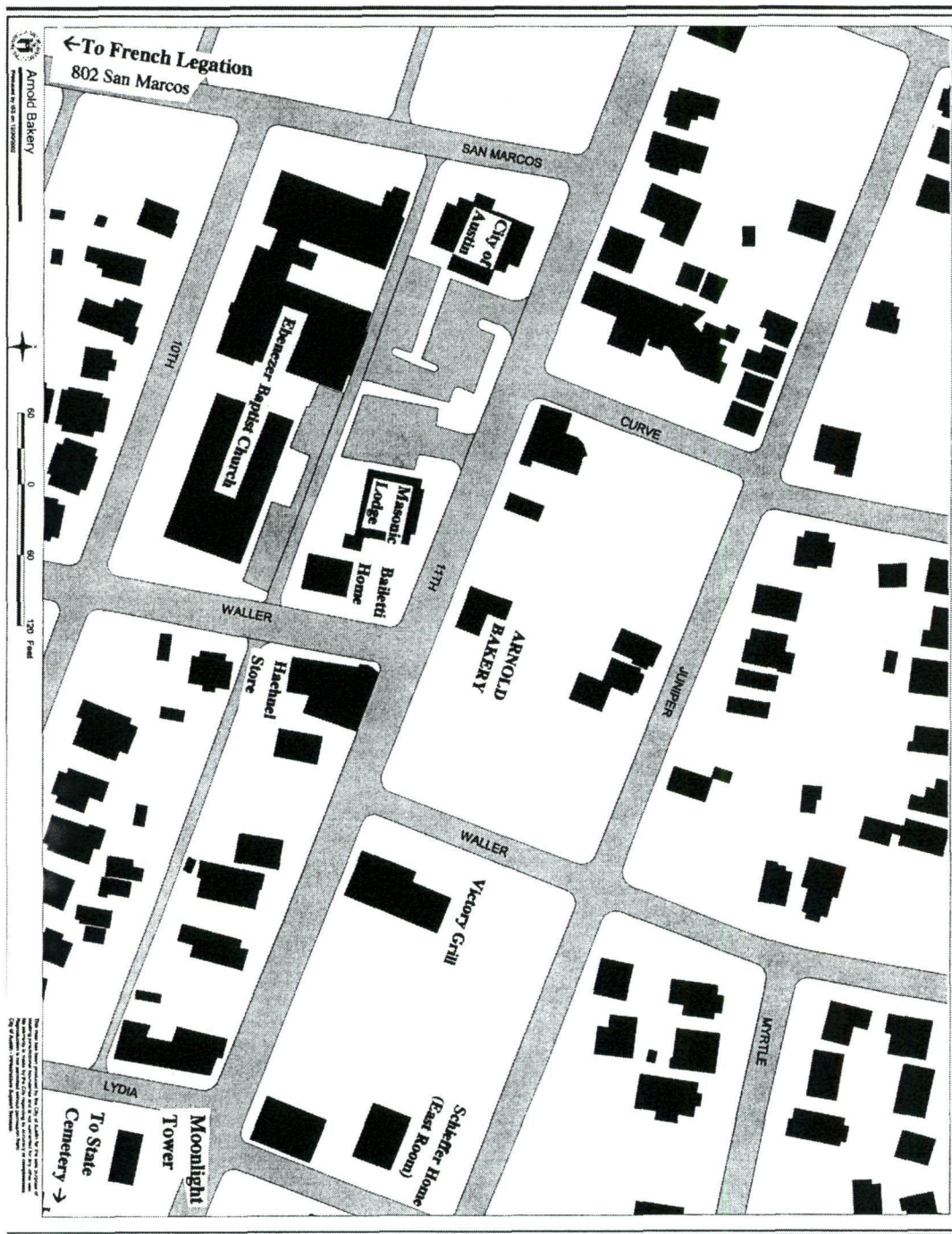
United States Department of the Interior  
National Park Service

# National Register of Historic Places Continuation Sheet

Section MAP Page 20

Arnold Bakery  
Austin, Travis County, Texas

Arnold Bakery with surrounding streets and landmarks. North at right.





United States Department of the Interior  
National Park Service

## National Register of Historic Places Continuation Sheet

Section FIGURE Page 22

Arnold Bakery  
Austin, Travis County, Texas

**Figure 1. Arnold Bakery, c. 1906. Source: Austin History Center, Austin Public Library PICA 02684.** From left: Willie Arnold, b. 1887; on horse: Richard Reuter, grandson of Richard Arnold, and a visitor. Two men in background: Richard Arnold holding granddaughter Metea Reuter, b. 2/1904, and Max Reuter. Holding second horse: Rosa Arnold Reuter. On horse: in front is Margaret Arnold (Stengel) b. 1899, and behind is Minna May Maerki (Sterzing). [Note Ella, b. June 1908, is not in photo]. Far right – Lillie (Oclting?) Maerki. Note similarity of clothing, hairbows, boy's neck bow, suspenders to those in PICB 00200, indicating date circa 1906. Copied from original loaned by Mina May Maerki Sterzing, Aug. 1962.



United States Department of the Interior  
National Park Service

## National Register of Historic Places Continuation Sheet

Section FIGURE Page 23

Arnold Bakery  
Austin, Travis County, Texas

**Figure 2. Arnold family, c. 1906. Source: Austin History Center, Austin Public Library PICB 00200.**  
The circa 1906 photo of family in back yard of frame bakery w/ identification on back: "Taken in back yard of bakery-residence of Richard Arnold c. 1906. Standing on left: Willie Arnold, Mrs. Richard Arnold. Children sitting on steps: Front row (1) Richard Reuter, (2) visitor. Back row: (1) Margaret Arnold Stengel, (2) Minna May Maerki Sterzing [who loaned the original photo]. Child standing: Maeta Reuter Beverly (Mrs. Tom, b. 1904). Men sitting on steps: (1) Richard Arnold, (2) Max Reuter (son-in-law). Woman standing on right: (1) Rosa Arnold Reuter, (2) unidentified [probably Hannah].



United States Department of the Interior  
National Park Service

## National Register of Historic Places Continuation Sheet

Section FIGURE Page 24

Arnold Bakery  
Austin, Travis County, Texas

**Figure 3. Arnold Bakery, c. 1970. Source: Austin History Center, Austin Public Library PICH 00616.**  
3 x 5 inch photo with phone poles, brick building, cars. Illustrates converted windows on front façade.



United States Department of the Interior  
National Park Service

## National Register of Historic Places Continuation Sheet

Section FIGURE Page 25

Arnold Bakery  
Austin, Travis County, Texas

Figure 4. Arnold Bakery, September 1980. Source: Texas Historical Commission files.



United States Department of the Interior  
National Park Service

## National Register of Historic Places Continuation Sheet

Section PHOTO Page 26

Arnold Bakery  
Austin, Travis County, Texas

---

### Photography log

**Arnold Bakery Building**  
**1010 East Eleventh Street**  
**Austin, Travis County, Texas**  
**Photographed by Phoebe Allen, December 19, 2002.**  
**Negatives on file at Texas Historical Commission.**

Photograph 1 of 2  
South elevation  
Camera facing north

Photograph 2 of 2  
Southwest oblique  
Camera facing northeast

UNITED STATES DEPARTMENT OF THE INTERIOR  
NATIONAL PARK SERVICE

NATIONAL REGISTER OF HISTORIC PLACES  
EVALUATION/RETURN SHEET

REQUESTED ACTION: NOMINATION

PROPERTY NAME: Arnold Bakery

MULTIPLE NAME:

STATE & COUNTY: TEXAS, Travis

DATE RECEIVED: 12/04/03      DATE OF PENDING LIST: 12/16/03  
DATE OF 16TH DAY: 1/01/04      DATE OF 45TH DAY: 1/17/04  
DATE OF WEEKLY LIST:

REFERENCE NUMBER: 03001416

REASONS FOR REVIEW:

APPEAL: N    DATA PROBLEM: N    LANDSCAPE: N    LESS THAN 50 YEARS: N  
OTHER: N    PDIL: N    PERIOD: N    PROGRAM UNAPPROVED: N  
REQUEST: N    SAMPLE: N    SLR DRAFT: N    NATIONAL: N

COMMENT WAIVER: N

ACCEPT     RETURN     REJECT    1/14/04 DATE

ABSTRACT/SUMMARY COMMENTS:

**Entered in the  
National Register**

RECOM./CRITERIA \_\_\_\_\_

REVIEWER \_\_\_\_\_ DISCIPLINE \_\_\_\_\_

TELEPHONE \_\_\_\_\_ DATE \_\_\_\_\_

DOCUMENTATION see attached comments Y/N see attached SLR Y/N



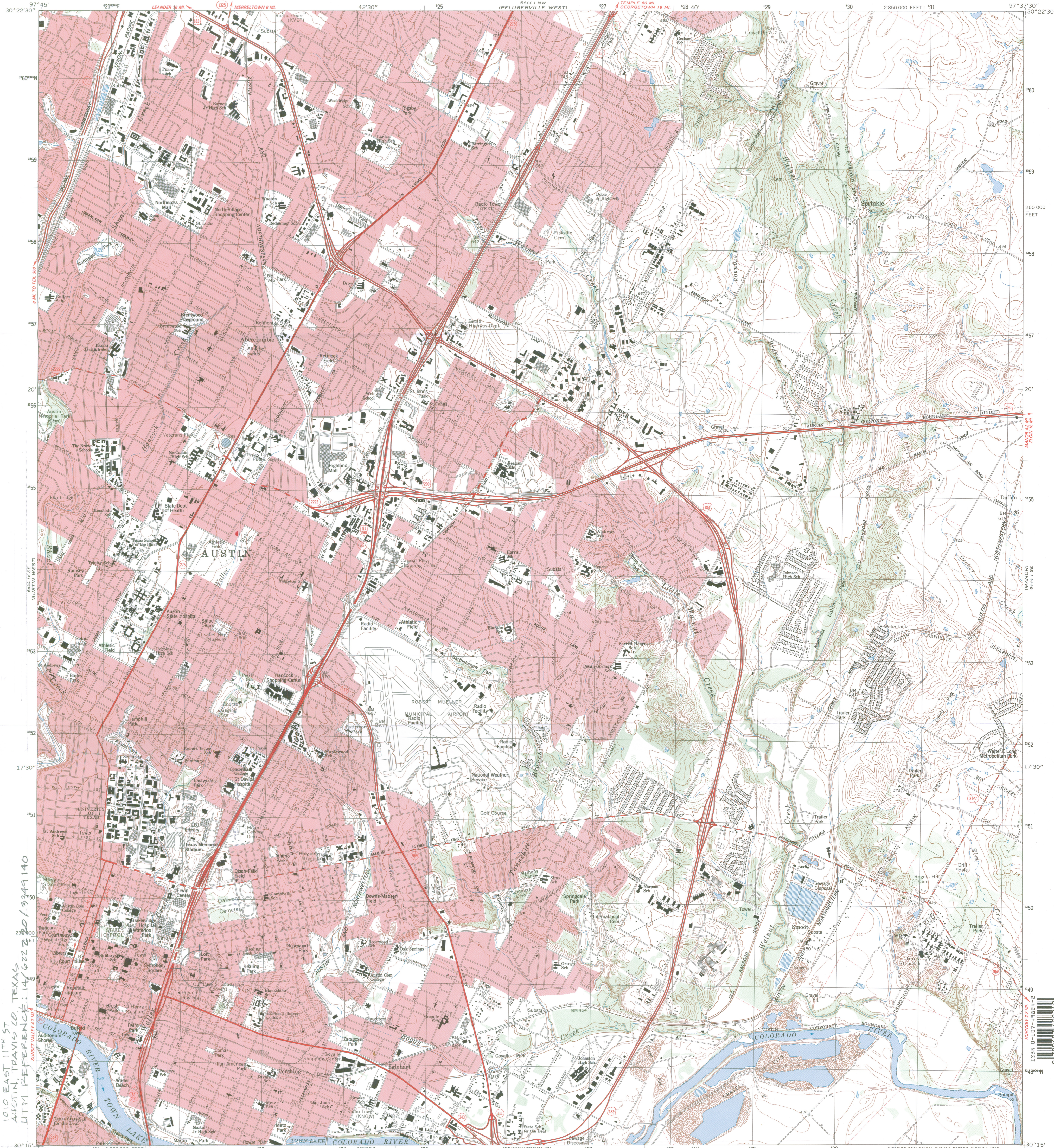
ARNOLD BAKERY  
1010 EAST ELEVENTH STREET  
AUSTIN, TRAVIS CO., TEXAS

PHOTOGRAPH 1 of 2



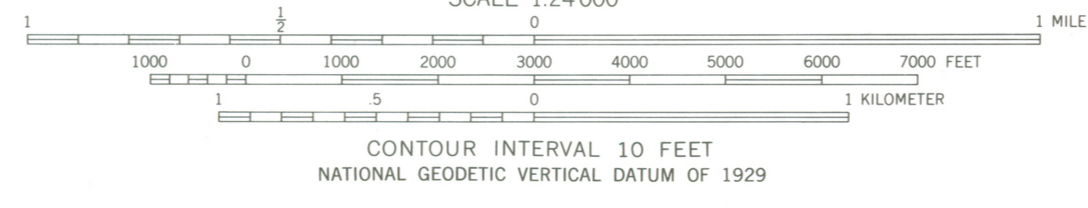
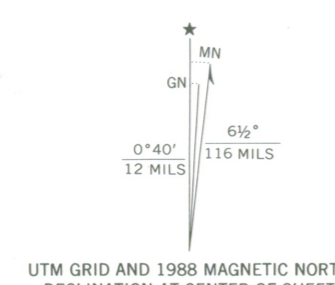
Little  
GUY

ARNOLD BAKERY  
1010 EAST ELEVENTH STREET  
AUSTIN, TRAVIS CO., TEXAS  
PHOTOGRAPH 2 of 2



ARNOLD BAKERY  
1010 EAST 11TH ST  
AUSTIN, TRAVIS CO. TEXAS  
UTM REFERENCE: 14T 622301 3249140

Maped, edited, and published by the Geological Survey  
in cooperation with City of Austin  
Control by USGS and NOS/NOAA  
Topography by photogrammetric methods from aerial photographs  
taken 1952. Field checked 1954. Revised from aerial photographs  
taken 1985. Field checked 1986. Map edited 1988  
Projection and 10,000-foot grid ticks: Texas  
coordinate system, central zone (Lambert conformal conic)  
1000-meter Universal Transverse Mercator grid, zone 14  
1927 North American Datum  
To place on the predicted North American Datum 1983  
move the projection lines 18 meters south and  
28 meters east as shown by dashed corner ticks  
Red tint indicates areas in which only landmark buildings are shown  
Fine red dashed lines indicate selected fence lines



ROAD CLASSIFICATION

Primary highway, hard surface	Light-duty road, hard or improved surface
Secondary highway, hard surface	Unimproved road
Interstate Route	U. S. Route
	State Route

THIS MAP COMPLIES WITH NATIONAL MAP ACCURACY STANDARDS  
FOR SALE BY U.S. GEOLOGICAL SURVEY  
DENVER, COLORADO 80225, OR RESTON, VIRGINIA 22092  
A FOLDER DESCRIBING TOPOGRAPHIC MAPS AND SYMBOLS IS AVAILABLE ON REQUEST



AUSTIN EAST, TEX.  
30097-C6-TF-024

1988  
DMA 6444 1 SW-SERIES V882

MILLER BLUEPRINT CO.  
P.O. BOX 2066 78768 501 W. 6TH 78701  
AUSTIN, TEXAS PH. 512-478-8793  
1-800-252-3469 FAX 512-474-7099

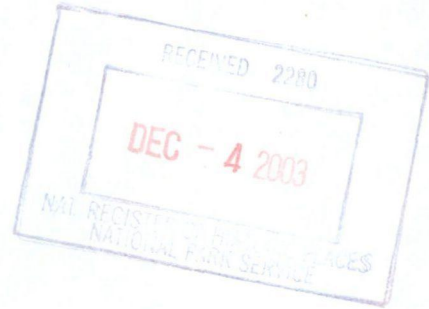




**TEXAS  
HISTORICAL  
COMMISSION**

Rick Perry • *Governor*  
John L. Nau, III • *Chairman*  
F. Lawrence Oaks • *Executive Director*

*The State Agency for Historic Preservation*



TO: Carol Shull, Keeper  
National Register of Historic Places

FROM: Gregory W. Smith, National Register Coordinator  
Texas Historical Commission

RE: Arnold Bakery, Austin, Travis County, Texas

DATE: December 2, 2003

The following materials are submitted regarding: Arnold Bakery, Austin, Travis County, Texas

<input checked="" type="checkbox"/>	Original National Register of Historic Places form
<input type="checkbox"/>	___ Resubmitted nomination
<input type="checkbox"/>	Multiple Property nomination form
<input checked="" type="checkbox"/>	Photographs
<input checked="" type="checkbox"/>	USGS map
<input type="checkbox"/>	Correspondence
<input type="checkbox"/>	Other: _____

COMMENTS:

Please ensure that this nomination is reviewed

The enclosed owner objections (do \_\_\_) (do not \_\_\_) constitute a majority of property owners

Other \_\_\_\_\_