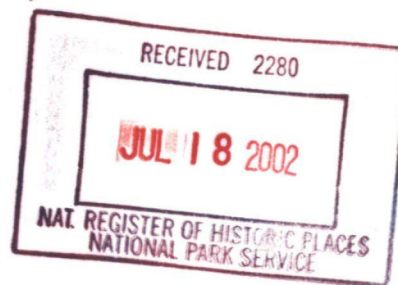


(Oct. 1990)

**United States Department of the Interior
National Park Service**

**NATIONAL REGISTER OF HISTORIC PLACES
REGISTRATION FORM**



1. NAME OF PROPERTY

HISTORIC NAME: Mission Citrus Growers Union Packing Shed

OTHER NAME/SITE NUMBER: Edinburg Citrus Association; Growers Select Produce Packing Shed

2. LOCATION

STREET & NUMBER: 824 West Business Highway 83

CITY OR TOWN: Mission

STATE: Texas

CODE: TX

COUNTY: Hidalgo

CODE: 215

NOT FOR PUBLICATION: N/A

VICINITY: N/A

ZIP CODE: 78572

3. STATE/FEDERAL AGENCY CERTIFICATION

As the designated authority under the National Historic Preservation Act, as amended, I hereby certify that this ☒ nomination request for determination of eligibility meets the documentation standards for registering properties in the National Register of Historic Places and meets the procedural and professional requirements set forth in 36 CFR Part 60. In my opinion, the property ☒ meets ☐ does not meet the National Register criteria. I recommend that this property be considered significant ☐ nationally ☒ statewide ☒ locally. (See continuation sheet for additional comments.)

Signature of certifying official

July 1, 2002

Date

State Historic Preservation Officer, Texas Historical Commission

State or Federal agency and bureau

In my opinion, the property ☐ meets ☐ does not meet the National Register criteria.
(See continuation sheet for additional comments.)

Signature of commenting or other official

Date

State or Federal agency and bureau

4. NATIONAL PARK SERVICE CERTIFICATION

I hereby certify that this property is:

☒ entered in the National Register

☐ See continuation sheet.

☐ determined eligible for the National Register

☐ See continuation sheet.

☐ determined not eligible for the National Register

☐ removed from the National Register

☐ other (explain):

Signature of the Keeper

Date of Action

8/30/02

5. CLASSIFICATION

OWNERSHIP OF PROPERTY: Private

CATEGORY OF PROPERTY: Building

NUMBER OF RESOURCES WITHIN PROPERTY:	CONTRIBUTING	NONCONTRIBUTING
	1	2 BUILDINGS
	0	0 SITES
	0	0 STRUCTURES
	0	0 OBJECTS
	1	2 TOTAL

NUMBER OF CONTRIBUTING RESOURCES PREVIOUSLY LISTED IN THE NATIONAL REGISTER: 0

NAME OF RELATED MULTIPLE PROPERTY LISTING: Historic and Architectural Resources of Mission,
Hidalgo County, Texas

6. FUNCTION OR USE

HISTORIC FUNCTIONS: AGRICULTURE/processing

CURRENT FUNCTIONS: AGRICULTURE/processing

7. DESCRIPTION

ARCHITECTURAL CLASSIFICATION: NO STYLE

MATERIALS:	FOUNDATION	CONCRETE
	WALLS	CONCRETE; ASBESTOS
	ROOF	ASPHALT
	OTHER	WOOD; OTHER: Structural clay tile

NARRATIVE DESCRIPTION (see continuation sheets 7-5 through 7-6).

United States Department of the Interior
National Park Service

National Register of Historic Places
Continuation Sheet

Section 7 Page 5

Mission Citrus Growers Union Packing Shed
Mission, Hidalgo County, Texas

DESCRIPTION

The Mission Citrus Growers Union (now Growers Select Produce) Packing Shed is a one- to two-story fruit packing plant located at the western edge of the original Mission townsite, in an area of commercial and light industrial buildings including other former fruit packing facilities. The property consists of a 1944 fruit processing building, a type known locally as a packing shed, and two newer auxiliary buildings connected to the original by canopies on the east and southeast. The rectangular-plan processing building measures 200' north-south by 180' east-west. Concrete loading platforms extend down the length of the north, south, and east elevations. Constructed of yellow structural clay tile walls resting on a raised concrete slab foundation, the building's distinctive architectural feature is its double arch Lamella roof. The property occupies most of an irregularly shaped city block bounded by State Business Highway 83 on the north, the Union Pacific railroad on the south, Nicholson Road on the east and Holland Drive on the west. The packing shed is oriented toward Highway 83 but its rear loading docks also fronts onto the Union Pacific railroad tracks. Despite the addition of the two newer buildings on the site, and minor modifications, the original Lamella roof packing shed retains its integrity to a high degree (Figure 2).

A Lamella roof is a curved roof constructed of relatively short boards of uniform length, called lamellas. The lamellas are bolted together at an angle, so that each lamella is intersected by two adjacent lamellas at its midpoint, forming a series of interlocking diamond shapes (Figure 3). A network of lamellas forms a segmental arch of mutually braced and stiffened timbers. Tie rods or buttresses are required to counteract the horizontal thrust of the roof. Developed in Europe in 1908 and introduced in the United States in 1925, Lamella roofs provided an economical solution for buildings requiring a long clear span with a high center clearance, such as auditoriums and gymnasiums. The Mission Citrus Grower's Union roof is decked with solid 3/4" thick wood planking, covered with roll roofing. Each roof has two rows of seven skylights and several circular vents (Figure 4).

The north, or principal, elevation of the packing shed consists of a long, flat wall topped by the arched end walls of the two Lamella roofs. A 10'-deep concrete loading platform extends the length of the elevation. Two sliding plank doors with diagonal and horizontal battens open onto the loading area near the middle and at the west end of the elevation. Eight 4' x 7' door openings shown on the architectural plans have been enclosed with masonry of a slightly darker color. Seven square vents penetrate the elevation near the floor. A concrete belt course 10' above the loading platform visually divides the elevation into a lower and upper portion and reinforces the building's horizontal character. The upper elevation, comprising the roof end walls, are masonry for the first 10', with dark green cement-asbestos shingles the remainder of the way. A painted sign on the masonry identifies the building as "GROWERS SELECT PRODUCE." Near the top of each end wall, two large wall-mounted exhaust fans ventilate the interior.

The south elevation is a flat masonry wall two stories in height with an 8'-deep loading platform extending the length of the wall. First and second floors are delineated by a concrete string course. There are three 8' x 9' sliding wood doors on the ground floor. The doors are of plank construction with diagonal and horizontal battens. Architectural plans show that, as constructed, the elevation had four sliding doors with windows at the east and west ends on the first floor. The westernmost sliding door and the easternmost window have since been infilled with masonry. The second story contains a row of single and paired wood-sash double-hung 2/2 windows and a wood sliding door. Several of the window sashes have been removed and replaced with plywood panels. Four downspouts carry rainwater from a roof gutter to the loading platform.

The west elevation consists of a flat masonry wall with three 8' x 9' sliding wood doors. Four evenly spaced downspouts lead from the roof gutter at the top of the wall to the ground. There is no loading platform on this elevation.

United States Department of the Interior
National Park Service

National Register of Historic Places
Continuation Sheet

Section 7 Page 6

Mission Citrus Growers Union Packing Shed
Mission, Hidalgo County, Texas

At the southern end of the elevation, a set of concrete steps leads to a single hinged door. Just inside the door is the stair to the mezzanine.

An 8'-deep concrete loading platform, covered by a metal canopy, extends the length of the elevation. The 1944 architectural plans show there were five 4' x 7' hinged doors, flanked by sliding wood doors near either end of the elevation. As on the north elevation, the hinged doors have been enclosed with masonry. A tall square smokestack, located on the exterior wall slightly north of the elevation's mid-point, projects through the roof.

Freestanding additions extending to the east and southeast obscure much of the east side elevation. A tall concrete tilt-wall building extends to the east from the loading dock. Constructed in 1995, the building is used for cold storage of asparagus, cantaloupe, and honeydew melons. A ca. 1960 cold storage structure attaches to the building at the southeast corner and extends to the east. Built on a concrete block foundation, the building has concrete panel walls and a shallow pitched metal roof. An asymmetrical side-gabled roof, supported by a row of steel pipe columns at the leading edge, protects the addition's deep loading dock. The structure is in fair condition.

The interior of the main processing building consists of a large packing room divided by a row of columns running north-south. The columns carry the juncture of the two Lamella roofs. "Coloring," or ripening, rooms extend along the north and east walls. A mezzanine containing administrative offices extends the length of the south wall. A stair at the southwest corner of the building provides access to the mezzanine. Interior partitions are painted structural clay tile; interior doors are typically stile-and rail, with 5 cross-panels. Most of the doors retain their original hardware. Offices in the mezzanine area have been updated with carpet, florescent lighting, new kitchen and bathroom fixtures and painted wainscoting.

8. STATEMENT OF SIGNIFICANCE

APPLICABLE NATIONAL REGISTER CRITERIA

- ☒ **A** PROPERTY IS ASSOCIATED WITH EVENTS THAT HAVE MADE A SIGNIFICANT CONTRIBUTION TO THE BROAD PATTERNS OF OUR HISTORY.
- ☐ **B** PROPERTY IS ASSOCIATED WITH THE LIVES OF PERSONS SIGNIFICANT IN OUR PAST.
- ☒ **C** PROPERTY EMBODIES THE DISTINCTIVE CHARACTERISTICS OF A TYPE, PERIOD, OR METHOD OF CONSTRUCTION OR REPRESENTS THE WORK OF A MASTER, OR POSSESSES HIGH ARTISTIC VALUE, OR REPRESENTS A SIGNIFICANT AND DISTINGUISHABLE ENTITY WHOSE COMPONENTS LACK INDIVIDUAL DISTINCTION.
- ☐ **D** PROPERTY HAS YIELDED, OR IS LIKELY TO YIELD, INFORMATION IMPORTANT IN PREHISTORY OR HISTORY.

CRITERIA CONSIDERATIONS: N/A

AREAS OF SIGNIFICANCE: AGRICULTURE; COMMERCE
ENGINEERING

PERIOD OF SIGNIFICANCE: 1944-1952

SIGNIFICANT DATES: 1944

SIGNIFICANT PERSONS: N/A

CULTURAL AFFILIATION: N/A

ARCHITECT/BUILDER: Nossier, Edwin; Nossier Lumber Company;
Swedlund, H. B. Jr., Contractor

NARRATIVE STATEMENT OF SIGNIFICANCE (see continuation sheets 8-7 through 8-9)

9. MAJOR BIBLIOGRAPHIC REFERENCES

BIBLIOGRAPHY (see continuation sheet 9-10)

PREVIOUS DOCUMENTATION ON FILE (NPS): N/A

- ☐ preliminary determination of individual listing (36 CFR 67) has been requested.
- ☐ previously listed in the National Register
- ☐ previously determined eligible by the National Register
- ☐ designated a National Historic Landmark
- ☐ recorded by Historic American Buildings Survey
- ☐ recorded by Historic American Engineering Record

PRIMARY LOCATION OF ADDITIONAL DATA:

- ☒ State historic preservation office (*Texas Historical Commission*)
- ☐ Other state agency
- ☐ Federal agency
- ☐ Local government
- ☐ University
- ☐ Other -- Specify Repository:

United States Department of the Interior
National Park Service

National Register of Historic Places
Continuation Sheet

Section 8 Page 7

Mission Citrus Growers Union Packing Shed
Mission, Hidalgo County, Texas

STATEMENT OF SIGNIFICANCE

The Mission Citrus Growers Union packing shed is an outstanding example of the Lamella frame design that was prominently used for warehouses and agricultural processing plants throughout South Texas from the late 1930s until the 1950s. The property is nominated under Criterion A, in the areas of commerce and agriculture at the local level of significance, for its associations with citrus production in Mission during World War II and the late 1940s. The building is also noteworthy for its distinctive Lamella roofing system and is therefore nominated under Criterion C for Engineering at the local level of significance. The property is related to the historic context, *Grapefruit's Lone Star Home: The Development Of Mission, Texas*. It is one of the city's best and most distinctive architectural representations of its historic dependence on agriculture -- particularly citrus -- and agriculture-related businesses. Built by the Mission Citrus Growers Union in 1944, the building also represents the trend toward agricultural cooperatives that began with The Texas Citrus Fruit Growers Exchange in 1923 and expanded throughout the Valley in the 1930s and 1940s, until the major freezes of 1949 and 1951 halted the dominance of citrus in the Lower Rio Grande Valley. It is the only historic packing shed in Mission still serving its original purpose.

Although the citrus industry dominated agriculture in the Mission area in the 1920s and the 1930s, growers searched for new ways to maximize profits from their groves. Individual citrus farmers united to form agricultural organizations, known as cooperatives, to process and market their own crops in hopes of retaining profits usually made by the middle man, or cash buyer. The cooperatives also attempted to stabilize market prices by presenting a united front to buyers. An advertisement for the Texas Citrus Fruit Growers Exchange, the first cooperative in the Lower Rio Grande Valley, urged local farmers to join the union to avoid their fruit "being used for the purpose of cutting prices and reducing the profits of other Valley growers." The association also promised to establish new markets in advance of the harvest and to expand those already in place (*Monty's Monthly* May 1925).

Cooperatives became even more prominent during the Great Depression of the 1930s when farmers banded together to assist each other and maintain prices. Growers in the Mission area followed the valley-wide trend toward cooperatives and formed the Mission Citrus Growers Union, a member unit of the Rio Grande Valley Citrus Exchange, in 1937. With the start of World War II, the Valley's citrus industry was bolstered by increased military and civilian food demands. The Mission Citrus Growers Union expanded rapidly during the war, packing 351,000 boxes of fruit in the 1943 season. By 1944, it had outgrown its facilities (*Mission Times* July 14 1944). During the economic boom of the war years when domestic building was limited and materials were reserved for the war effort, the Mission Citrus Growers Union acquired a permit to construct a new packing shed in Mission. Since food production was essential to U. S. defense efforts, such construction was thus exempt from war rationing.

The Mission Citrus Growers Union purchased a 4.5 acre site at the western edge of Mission from the American Legion for \$3,500, in March 1944. Ideally located for agricultural processing, the land parcel had direct frontage onto U.S. Highway 83 on the north and the Union Pacific Railroad on the south. Its proximity to transportation guaranteed easy shipping and receiving. A prominent lumber and building company in the Valley, Nossier Lumber Company, began work immediately on the double-arched, diamond frame Lamella packing shed. The Lamella honeycomb design allowed for more open space in the cavernous packing "shed," a deceptive colloquial term for fruit packing facilities (Figure 5). According to family members, Edwin Nossier, founder of Nossier Lumber Company, patented the Lamella design that he had learned in his native Germany. His building company constructed the popular dome shaped buildings throughout the state, and particularly in South Texas, until labor costs and materials became too high compared to prefabricated buildings that proliferated in the 1950s (Nossier October 30, 1998). H. B. Swedlund and Sons served as contractors in charge of the

United States Department of the Interior
National Park Service

National Register of Historic Places
Continuation Sheet

Section 8 Page 8

Mission Citrus Growers Union Packing Shed
Mission, Hidalgo County, Texas

project (*Mission Times* June 23, 1944). Although not a local contractor, H. B. Swedlund moved to Mission for the project, where he lived the remainder of his life (Musser November 13, 1998).

The building contained the most modern packing equipment available and was one of the few packing sheds in the Valley that was capable of packing both oranges and grapefruit at the same time (Goodwin October 30, 1998). The Mission Citrus Growers Union offered its member growers the benefits of packing facilities with the capacity to load one million boxes per season and the services of the Texsun sales organization to handle their marketing needs (*Mission Times* September 15, 1944). Although the citrus industry was dealt a disastrous blow with back-to-back freezes in 1949 and 1951, the Mission Citrus Growers Union remained in business until 1962, when freezing temperatures decreased the yield of the citrus crop for the year, leaving the cooperative in financial trouble. The members of the Mission-area cooperative recovered some of their losses when the Edinburg Citrus Association and The Mission Citrus Growers Union completed a mutually beneficial merger in 1966. The Edinburg Citrus Association paid back debt owed to members of the Mission association and in return, they acquired the large packing facility and gained new members in the Mission area. The Edinburg association continued to use the Mission packing shed until the freeze of 1983 crippled citrus production and only one facility, the present packing plant at Edinburg, was necessary. The Edinburg association closed the Mission unit and the building lay vacant until Carl Waitz, a local grocer, bought it in 1991. Mr. Waitz died shortly after the purchase and his family used the building for storage. Robert Dyer, owner of Growers Select Produce, purchased the building and rehabilitated it in 1995 for use as a watermelon packing facility (Dyer October 28, 1998).

Two other resources occupy the present Growers Select Produce site. A Cold Room and attached loading dock built in the 1960s lies to the rear of the packing shed, at its southeast corner. When Robert Dyer renovated the packing shed in 1995, he built a new concrete tilt-wall building to the east of the main building to house fruits and vegetables requiring cold storage. Both of these ancillary buildings are non-contributing features of the property. However, they lie on the least accessible portion of the property and detract little from the packing shed's appearance from the public streets.

The Mission Citrus Growers Union packing shed is noteworthy for several reasons. It is a good example of a once-typical building type throughout the Lower Rio Grande Valley and is the only packing shed still used for its original purpose in the Mission vicinity. It clearly represents the area's early 20th century development and dependence on agriculture and agriculture-related industry. The project was one of the few major domestic construction projects in the Valley during World War II and its priority for construction highlights the importance of Valley citrus in wartime food production. In addition, the building's impressive dimensions, design, and packing capabilities are indicative of the large membership and productivity of the Mission Citrus Growers Union and is thus representative of the success and popularity of agricultural cooperatives, particularly in the 1930s and 1940s.

In addition to its significant historical associations with Mission's economic and agricultural development, the Mission Citrus Growers Union packing shed is also noteworthy for its double Lamella roof design and is therefore nominated to the NRHP under Criterion C for Engineering. The Lamella roof is an unusual structural system that makes use of wood boards bolted together to form a series of interlocking diamond shapes. It was developed for buildings with large interior spans, such as warehouses, auditoriums and gymnasiums. The Mission Citrus Growers Union packing shed is the only example of the once popular Lamella design buildings still used to pack fruit in the Valley. About half a dozen Lamella roofed buildings from the same period survive in the citrus-growing region of the Lower Rio Grande Valley but none of the known examples retain their integrity to the degree that the Mission Citrus Growers Union building does. These industrial buildings evolved with technology and changing economic conditions and thus their distinctive design features were often removed or obscured with more modern uses. None of the other remaining packing sheds in the area serve their original functions exception Mission Citrus Growers Union Packing Shed. Many have been converted to other uses such as storage, and none retain the high degree of integrity displayed by the unique double-Lamella building. A single arched Lamella building -- a former packing shed -- lies near the Mission Citrus Growers Union building but it is in poor condition, its windows have been removed and the original siding replaced. It serves as a warehouse for old and

United States Department of the Interior
National Park Service

National Register of Historic Places
Continuation Sheet

Section 8 Page 9

Mission Citrus Growers Union Packing Shed
Mission, Hidalgo County, Texas

broken appliances. Other former Lamella packing sheds in the area include a used clothing facility (ropa usada) on the railroad siding near McAllen and a car dealership showroom in Edinburg. The Mission Citrus Growers Union packing shed is the only known double-Lamella design and the only historic fruit-packing shed still used for its original purpose in the Lower Rio Grande Valley. It is a rare and remarkably intact illustration of the distinctive structural system and retains its salient, character-defining features to an outstanding degree.

**United States Department of the Interior
National Park Service**

**National Register of Historic Places
Continuation Sheet**

Mission Citrus Growers Union Packing Shed
Mission, Hidalgo County, Texas

Section 9 Page 10

BIBLIOGRAPHIC REFERENCES

Bair, Dwayne. Edinburg, TX. Interview with Terri Myers. 30 October 1998.

Dyer, Robert. Mission, TX. Interview with Terri Myers. 28 October 1998.

Mission Times, 14 July - 15 September 1944. Available at University of Texas - Pan American, Edinburg, TX.

Monty's Monthly: Monthly News of the Rio Grande Valley, May 1925.

Musser, John. Mission, TX. Interview with Terri Myers. 13 November 1998.

Nossier, Carole. Interview with Terri Myers. 30 October 1998.

Timber Engineering Company F.W. Dodge Corporation, *Timber Design and Construction Handbook*. F. W. Dodge Corporation New York. 1956.

10. GEOGRAPHICAL DATA

ACREAGE OF PROPERTY: 4.5 acres

UTM REFERENCES	Zone	Easting	Northing	Zone	Easting	Northing	
1	14	566600	2899620	3	14	566760	2899460
2	14	566780	2899600	4	14	566780	2899480

VERBAL BOUNDARY DESCRIPTION Block 152 / Lot 1-10 Mission Original Townsite**BOUNDARY JUSTIFICATION** The boundaries follow the lot and block historically associated with the Mission Citrus Growers Union Packing Shed

11. FORM PREPARED BY

NAME/TITLE: Terri Myers, Project Director/Historian; Sophie Roark, Research Assistant;
Tom P. Eisenhour, Architect**ORGANIZATION:** Hardy-Heck-Moore & Myers, Inc.**DATE:** March 1999**STREET & NUMBER:** 1414 W. 6th Street**TELEPHONE:** 512-478-8014**CITY OR TOWN:** Austin**STATE:** TX**ZIP CODE:** 78703

ADDITIONAL DOCUMENTATION

CONTINUATION SHEETS**MAPS** (see continuation sheet FIGURE-11)**PHOTOGRAPHS** (see continuation sheet PHOTO-15)**ADDITIONAL ITEMS** (see continuation sheets FIGURE 12-14)

PROPERTY OWNER

NAME: Dyer, Robert**STREET & NUMBER:** 824 West Business Highway 83**TELEPHONE:** 956-584-1910**CITY OR TOWN:** Mission**STATE:** Texas**ZIP CODE:** 78572

United States Department of the Interior
National Park Service

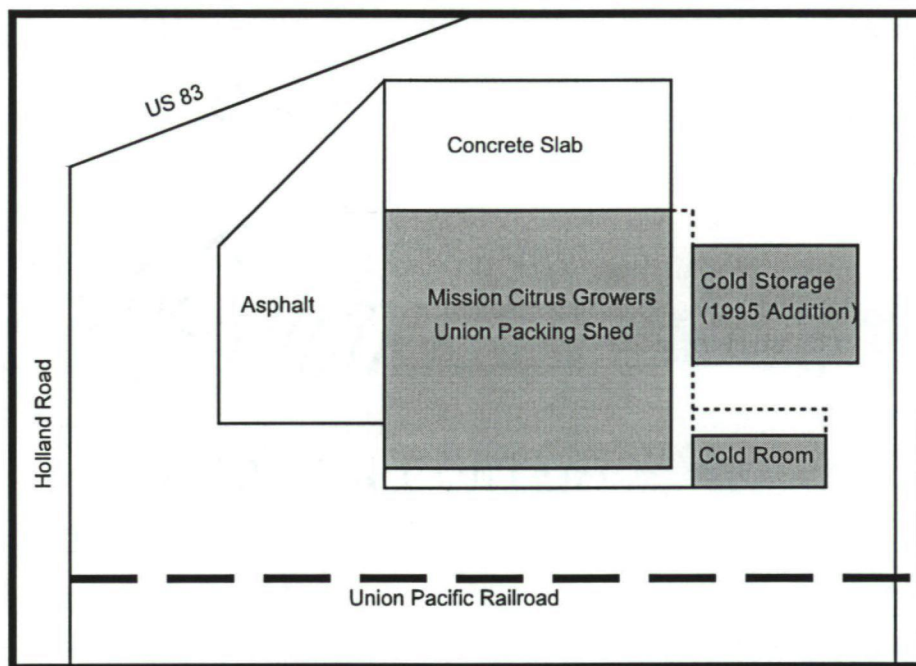
National Register of Historic Places
Continuation Sheet

Section FIGURE Page 11

Mission Citrus Growers Union Packing Shed
Mission, Hidalgo County, Texas

Figure 1. Site plan of Mission Citrus Growers Union Packing Shed.

Mission Citrus Growers Union
Packing Shed



Not to Scale

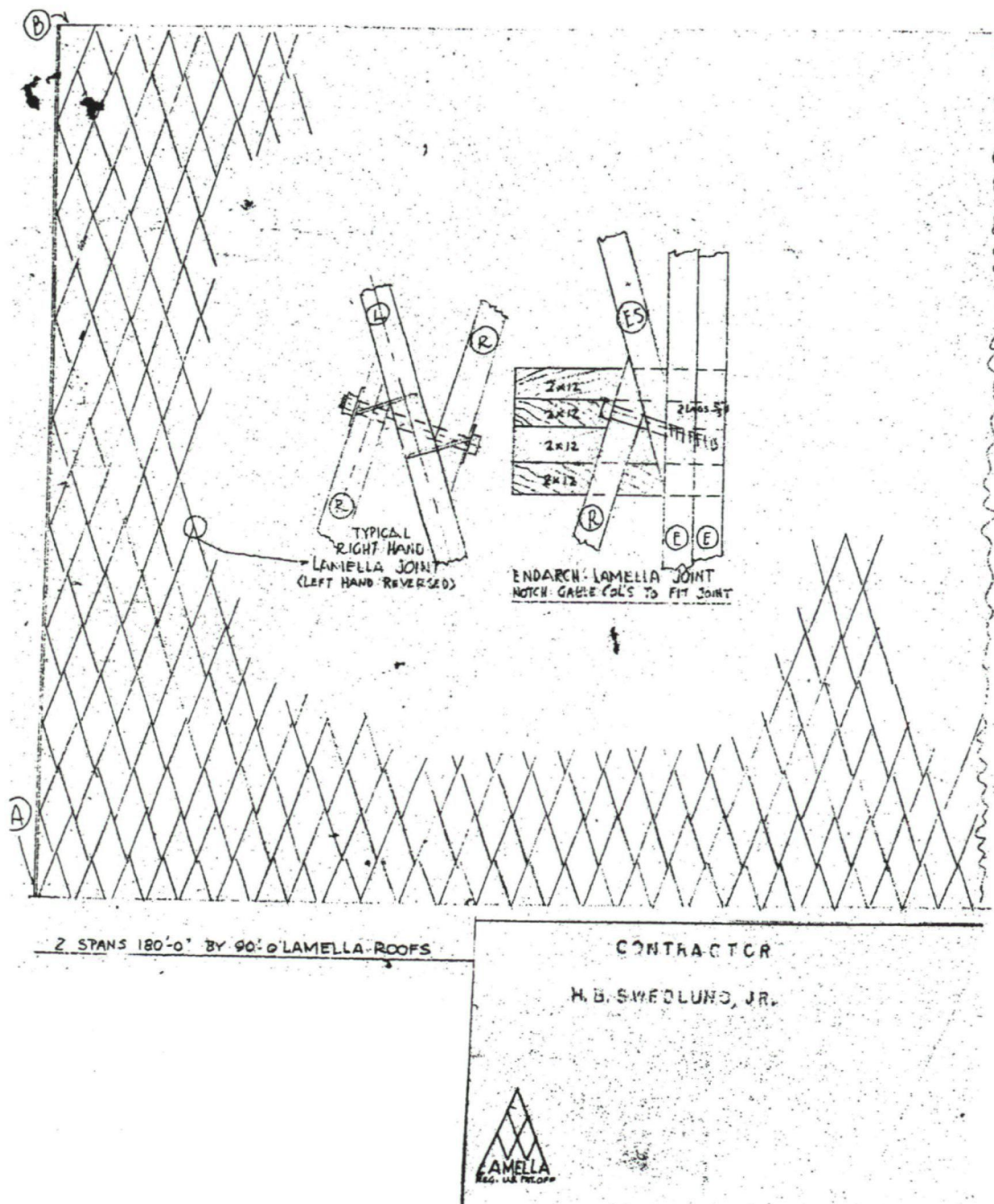
United States Department of the Interior
National Park Service

National Register of Historic Places
Continuation Sheet

Section FIGURE Page 12

Mission Citrus Growers Union Packing Shed
Mission, Hidalgo County, Texas

Figure 2. Detail of Lamella design from original plans. Mission Citrus Growers Union packing shed.



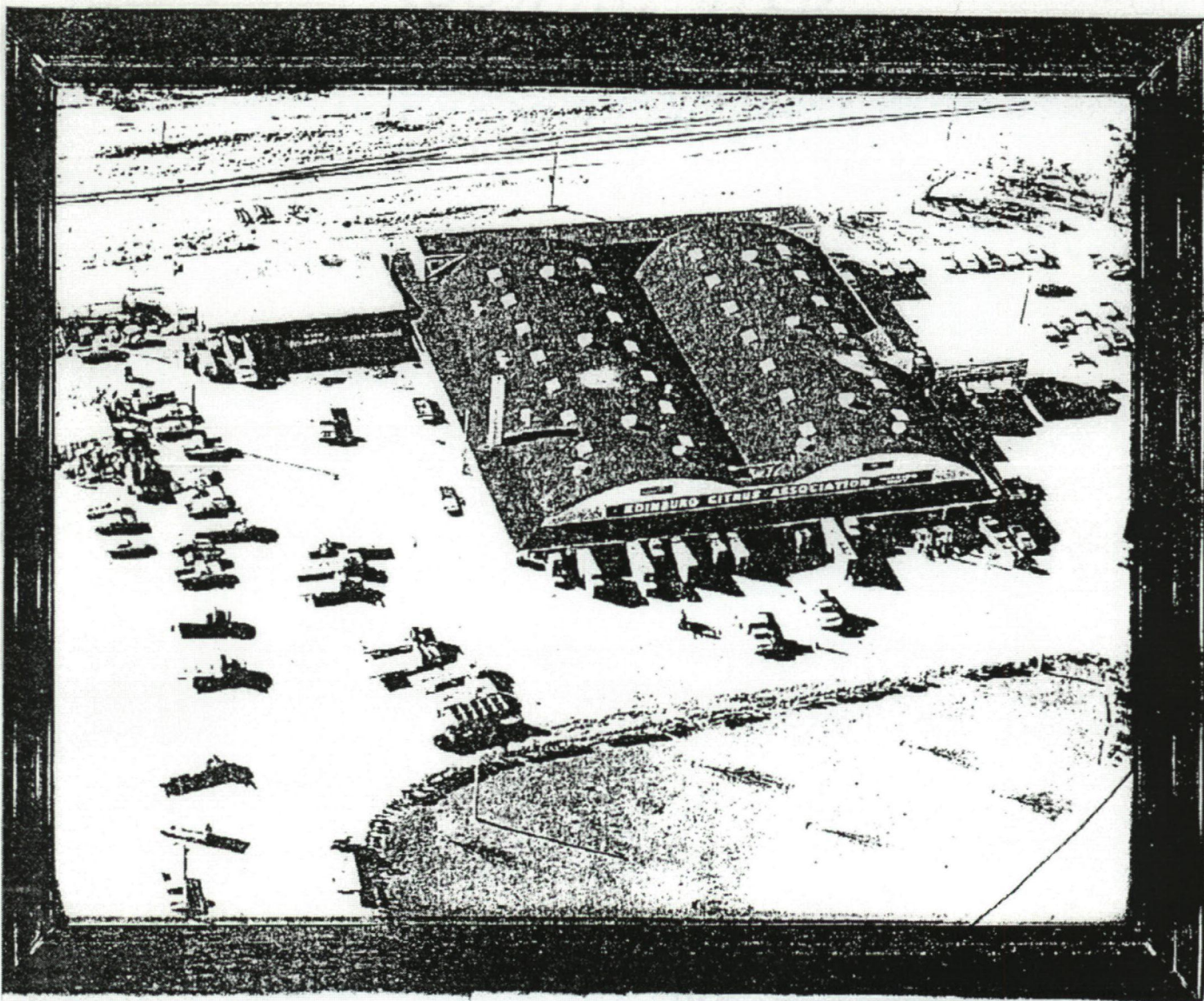
United States Department of the Interior
National Park Service

National Register of Historic Places
Continuation Sheet

Mission Citrus Growers Union Packing Shed
Mission, Hidalgo County, Texas

Section FIGURE Page 13

Figure 3. Aerial view of the Mission Citrus Growers Union Packing Shed about 1963. The Edinburg Citrus Association had merged with the Mission Citrus Growers Union and was using the facility. Photo source: Dwayne Bair.



**United States Department of the Interior
National Park Service**

**National Register of Historic Places
Continuation Sheet**

Section FIGURE Page 14

Mission Citrus Growers Union Packing Shed
Mission, Hidalgo County, Texas

Figure 4. Interior view of Growers Select Packing Shed, formerly Mission Citrus Growers Union Packing Shed. The Lamella Roof provides a large, open space for fruit packing. Photo: Terri Myers 1998.



**United States Department of the Interior
National Park Service**

**National Register of Historic Places
Continuation Sheet**

Section PHOTO Page 15

Mission Citrus Growers Union Packing Shed
Mission, Hidalgo County, Texas

PHOTO INVENTORY

**Mission Citrus Growers Union Packing Shed
Mission, Hidalgo County, Texas
Terri Myers – photographer**

Mission Citrus Growers Union Packing Shed - 824 West Business Highway 83
View: North elevation
Camera facing: South
Photo 1 of 1
1998

UNITED STATES DEPARTMENT OF THE INTERIOR
NATIONAL PARK SERVICE

NATIONAL REGISTER OF HISTORIC PLACES
EVALUATION/RETURN SHEET

REQUESTED ACTION: NOMINATION

PROPERTY NAME: Mission Citrus Growers Union Packing Shed

MULTIPLE NAME: Mission, Hidalgo County MPS

STATE & COUNTY: TEXAS, Hidalgo

DATE RECEIVED: 7/18/02 DATE OF PENDING LIST: 8/12/02
DATE OF 16TH DAY: 8/28/02 DATE OF 45TH DAY: 9/01/02
DATE OF WEEKLY LIST:

REFERENCE NUMBER: 02000911

REASONS FOR REVIEW:

APPEAL: N DATA PROBLEM: N LANDSCAPE: N LESS THAN 50 YEARS: N
OTHER: N PDIL: N PERIOD: N PROGRAM UNAPPROVED: N
REQUEST: N SAMPLE: N SLR DRAFT: N NATIONAL: N

COMMENT WAIVER: N

☒ ACCEPT ☐ RETURN ☐ REJECT 8/30/02 DATE

ABSTRACT/SUMMARY COMMENTS:

Entered in the
National Register

RECOM./CRITERIA _____

REVIEWER _____ DISCIPLINE _____

TELEPHONE _____ DATE _____

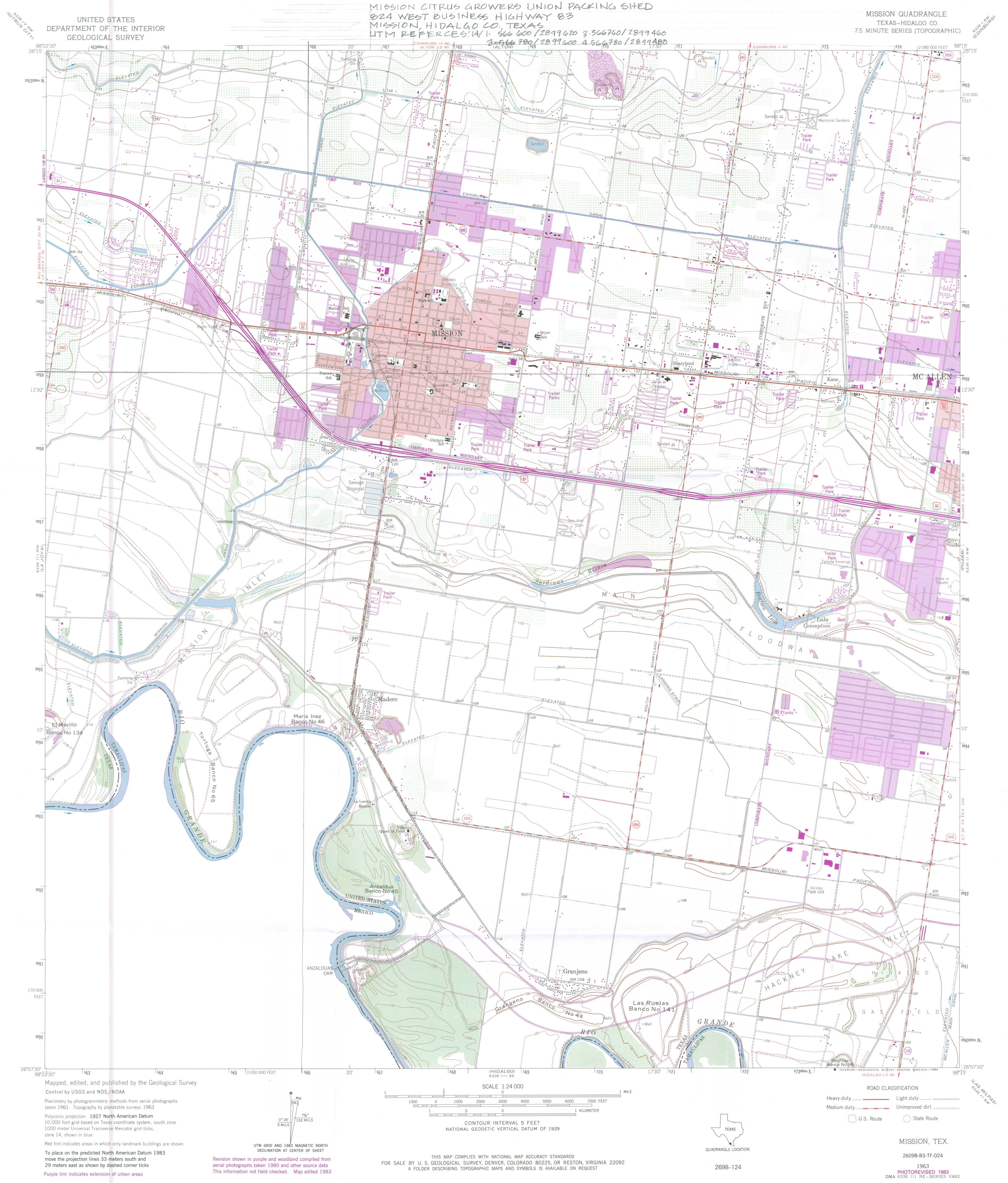
DOCUMENTATION see attached comments Y/N see attached SLR Y/N



MISSION CITRUS GROWERS
UNION PACKING SHED

824 WEST BUSINESS HIGHWAY 83
MISSION, HIDALGO CO., TEXAS

PHOTOGRAPH 1 of 1



UNITED STATES
DEPARTMENT OF THE INTERIOR
GEOLOGICAL SURVEY

MISSION CITRUS GROWERS UNION PACKING SHED
824 WEST BUSINESS HIGHWAY 83
MISSION, HIDALGO CO., TEXAS
UTM REFERENCE: 17W 1. 566 600 / 2899 620 3. 566 760 / 2899 460
2. 566 780 / 2899 600 4. 566 780 / 2899 480

MISSION QUADRANGLE
TEXAS-HIDALGO CO.
7.5 MINUTE SERIES (TOPOGRAPHIC)

Mapped, edited, and published by the Geological Survey
Control by USGS and NOS/NOAA
Planimetry by photogrammetric methods from aerial photographs
taken 1961. Topography by planimetric surveys 1963
Polyconic projection. 1927 North American Datum
10,000-foot grid based on Texas coordinate system, south zone
1000-meter Universal Transverse Mercator grid ticks,
zone 14, shown in blue
Red tint indicates areas in which only landmark buildings are shown
To place on the predicted North American Datum 1983
move the projection lines 33 meters south and
29 meters east as shown by dashed corner ticks
Purple tint indicates extension of urban areas

Revision shown in purple and woodland compiled from
aerial photographs taken 1980 and other source data
This information not field checked. Map edited 1983

SCALE 1:24 000
1 0000 0 1000 2000 3000 4000 5000 6000 7000 FEET
1 1 1 KILOMETER
CONTOUR INTERVAL 5 FEET
NATIONAL GEODETIC VERTICAL DATUM OF 1929



ROAD CLASSIFICATION
Heavy-duty ——— Light-duty ———
Medium-duty ——— Unimproved dirt ———
U.S. Route ——— State Route ———

MISSION, TEX.

26098-83-TF-024

1963
PHOTOREVISED 1983
DMA 6336 111 NE-SERIES V882