

(Oct. 1990)

United States Department of the Interior  
National Park Service

NATIONAL REGISTER OF HISTORIC PLACES  
REGISTRATION FORM

1266



1. NAME OF PROPERTY

HISTORIC NAME: Garza County Courthouse  
OTHER NAME/SITE NUMBER: N/A

2. LOCATION

STREET & NUMBER: 300 West Main Street  
CITY OR TOWN: Post  
STATE: Texas CODE: TX COUNTY: Garza CODE: 169 ZIP CODE: 79356  
VICINITY: N/A  
NOT FOR PUBLICATION: N/A

3. STATE/FEDERAL AGENCY CERTIFICATION

As the designated authority under the National Historic Preservation Act, as amended, I hereby certify that this x nomination request for determination of eligibility meets the documentation standards for registering properties in the National Register of Historic Places and meets the procedural and professional requirements set forth in 36 CFR Part 60. In my opinion, the property x meets \_\_\_ does not meet the National Register criteria. I recommend that this property be considered significant \_\_\_ nationally \_\_\_ statewide x locally. (\_\_\_ See continuation sheet for additional comments.)

Sept 20, 2001  
Date

State Historic Preservation Officer, Texas Historical Commission

State or Federal agency and bureau

In my opinion, the property \_\_\_ meets \_\_\_ does not meet the National Register criteria.  
(\_\_\_ See continuation sheet for additional comments.)

Signature of commenting or other official \_\_\_\_\_ Date \_\_\_\_\_

State or Federal agency and bureau

4. NATIONAL PARK SERVICE CERTIFICATION

I hereby certify that this property is:	Signature of the Keeper	Date of Action
___ entered in the National Register ___ See continuation sheet.	_____	_____
___ determined eligible for the National Register ___ See continuation sheet.	_____	_____
___ determined not eligible for the National Register	_____	_____
___ removed from the National Register	_____	_____
___ other (explain): _____	_____	_____

---

**5. CLASSIFICATION**

---

**OWNERSHIP OF PROPERTY:** Public

**CATEGORY OF PROPERTY:** Building

<b>NUMBER OF RESOURCES WITHIN PROPERTY:</b>	<b>CONTRIBUTING</b>	<b>NONCONTRIBUTING</b>
	1	2 <b>BUILDINGS</b>
	0	0 <b>SITES</b>
	0	1 <b>STRUCTURES</b>
	0	1 <b>OBJECTS</b>
	1	4 <b>TOTAL</b>

**NUMBER OF CONTRIBUTING RESOURCES PREVIOUSLY LISTED IN THE NATIONAL REGISTER:** 0

**NAME OF RELATED MULTIPLE PROPERTY LISTING:** N/A

---

**6. FUNCTION OR USE**

---

**HISTORIC FUNCTIONS:** GOVERNMENT: courthouse

**CURRENT FUNCTIONS:** GOVERNMENT: courthouse

---

**7. DESCRIPTION**

---

**ARCHITECTURAL CLASSIFICATION:** Late 19<sup>th</sup> and Early 20<sup>th</sup> Century American Movements: Prairie School

**MATERIALS:** FOUNDATION CONCRETE  
WALLS BRICK; OTHER/Cast stone  
ROOF ASPHALT  
OTHER

**NARRATIVE DESCRIPTION** (see continuation sheets 7-5 through 7-9).

United States Department of the Interior  
National Park Service

## National Register of Historic Places Continuation Sheet

Section 7 Page 5

Garza County Courthouse  
Post, Garza County, Texas

The Garza County Courthouse (1923) in the Texas South Plain's town of Post, is a three-story reinforced concrete structural frame building veneered with brick and cast stone. The rectangular plan building is 95 feet long on the north-south axis and 50'-8" wide on the east-west axis, and features a central plan with entrances on the north, south, east, and west elevations. The main entry is located on the east elevation, and is distinguished from the other elevations by three long windows stretching between the second and third floors. The courthouse displays a classical form with simple horizontal massing and symmetry, but specific architectural details are influenced by the Prairie School and include decorative window glazing, cast stone medallions, and light fixtures. Surrounding the courthouse is a modern, one-story brick, Sheriff's Office to the west, and the original jail to the north. The courthouse is situated in the center of Post, an early twentieth century train town arranged on a grid plan. Development around the courthouse is spare and consists mainly of recent commercial properties, residential housing, and a church.

The Garza County Courthouse is located in Post (population 3,864) the county seat and largest town of Garza County. The town is situated near the west central part of the county, at the junction of U.S. highways 84 and 380. Post is sited on level terrain and arranged as a grid pattern of east-west and north-south streets. The courthouse occupies Lot 24 in the center of town. The courthouse square is based on the Harrisonburg plan, and is bounded by West Main Street on the north and south sides and Avenue L and Avenue M on the east and west sides, respectively. These streets are surfaced with brick pavers.

The courthouse square is landscaped with mature elm, Arizona cypress, sweet gum, and pecan trees across its south and east elevations (see Figure 7-9). A row of four honey locust trees defines the southern edge of the square. The principal or east elevation is accessed by a concrete walkway. Placed in the center of the walkway is a statue of C.W. Post (noncontributing), erected on the square in 1957 as a part of the City of Post Golden Jubilee celebration. Beyond this feature are stone constructed planting beds and a steel flagpole. West of the courthouse is the Garza County Law Enforcement Center (noncontributing) and an active pump jack (noncontributing). Constructed in 1973, the one-story, multi-colored brick Law Enforcement Center displays a modern design with its flat roof and battered walls on the east and west elevations. An asphalt drive provides access to this side of the building. A curving asphalt drive and parking area dominate the north side of the courthouse square. A c.1927 brick jail (noncontributing), which was altered in the 1970s, is located near the center of the north edge of the courthouse grounds. There are three historical markers on the courthouse grounds. The three historical markers are Texas Historical Commission subject markers: Garza County, dated 1965; Charles W. Post, dated 1968, and Mrs. Merriweather Post, dated 1968.

The Garza County Courthouse is a three-story, rectangular plan, reinforced concrete building with brick and concrete cast stone veneering (see Photo 1). Each elevation of the courthouse is symmetrical in its fenestration and division of bays and terminated with heavy brick pilasters located at each end of the building.

United States Department of the Interior  
National Park Service

## National Register of Historic Places Continuation Sheet

Section 7 Page 6

Garza County Courthouse  
Post, Garza County, Texas

---

The courthouse sits on a concrete foundation and is surmounted by a slightly setback parapet. The cast stone capped parapet conceals a medium pitch gabled roof. A basement lies under the north end of the building and houses the original steam boiler. Access to the basement is through a doorway on the first floor or by an exterior stair well on the northwest corner of the building.

The east elevation is the main façade of the building (see Photo 1). The structure rises from a concrete water table to a cast stone parapet above the third floor windows. To give the building vertical emphasis and depth, the windows are slightly recessed into bays that stretch from the water table to the entablature. Between each bay is a brick pilaster decorated with a cast stone capital. Windows on the first floor are wood frame one-over-one, standard sash window with cast stone sills. Both the second and third floor windows are simple wood frame one-over-one units shorter in height than those on the first floor. All windows feature concrete sills and steel lintels.

The first floor is accessed through a one-story, brick portico. This feature displays the same heavy entablature and slightly stepped parapet and concrete parapet cap of the main roofline. Incised across the cast stone entablature are the words "Garza County." The central front entry is made of two aluminum frame doors and sidelights. Atop the door is a three-part transom that reflects the spacing of the door and sidelights with a divider rising from the doorframe to divide the transom. Above the portico are three large Prairie School influenced windows that are situated between the portico and entablature. The windows provide light to the two-story courtroom that occupies the central portion of the second and third floors. Square brick columns with slightly cantilevered concrete caps flank the sidewalk near the building, each surmounted by a Prairie School style light fixture.

The west elevation essentially follows the design of the principal façade (see Photo 2). The entryway on this elevation features one door and does not display the name of the county across the entablature. The square brick light columns carry beams supporting a canopy for the Law Enforcement Center. Although attached to the light columns, this canopy is not physically connected to the older building. The west elevation also contains a fire escape original to the building. The fire escape rests atop the portico, with the first floor stairs arranged at an angle to the ground. The only other variation on the west elevation is a small square brick chimney and concrete cap that appears above the roofline at the extreme northwest corner of the building. This chimney carries the vent for the boiler located in the basement.

The architectural features of the east and west elevations are repeated on a small scale on the narrower north and south elevations (see Photo 3). Each elevation features five bays with the same configuration as the east and west facades. The third floor displays a double set of one-over-one windows with a heavy divider strip concealing the end of an interior wall (see Photo 4). Each elevation is accessed by an entryway similar in design to that of the east entrance. A heavy concrete band divides the door and sidelights from the symmetrical three-section transom above. The south elevation of the courthouse is virtually identical to the north, with the

United States Department of the Interior  
National Park Service

## National Register of Historic Places Continuation Sheet

Section 7 Page 7

Garza County Courthouse  
Post, Garza County, Texas

exception that a small one-over-one window is located in the west side of the west column of the portico. Additionally there is rectangular, three-part window on the second floor looking onto the portico and illuminating the stairwell. As the structure exists today, the south elevation is original in every respect, and retains the only original entry to the building. This entry consists of double, wood doors, framed by wood sidelights and transoms (see Photo 4).

The courthouse has experienced a number of alterations over the years. These alterations include a substantial amount of wiring installed on the exterior and a junction box constructed on the north end. The building also reveals unit air conditioners installed on a number of window on each floor. The most far-reaching change occurred in 1985, when the existing windows and entryways were repaired, with storm windows installed over all windows, and the original doors on the east, west and north entries replaced with aluminum frame doors.<sup>1</sup> During this same project, the exterior was repainted and the original light cream trim changed to dark brown.

The interior of the building retains the basic configuration and appearance of its original design. The first floor is based on a cruciform plan, with corridors from each entry intersecting in the center of the building. The southeast quadrant of the first floor contains the County Clerk's office and vault. The southwest sector is divided into a copy room, storage room, and women's restroom. The northeast corner houses an extension of the County Clerk's office, the Agricultural Extension office, and Department of Public Safety Drivers' License testing room. The northwest quarter of the first floor contains the Tax Assessor-Collector's office and men's restroom.

A large courtroom occupies the central core of the second and third floors. To the north of the courtroom are the County Judge's offices and a Justice of the Peace office. To the south of the courtroom are the County Treasurer's offices and the County Attorney's suite of offices. A break room and office for the Justice of the Peace are located in this section. On the third floor, the north end houses the County Commissioners Courtroom. This section of the third floor, accessible only from the north stairwell, holds an office used by a constable and a storage room. The south section of the third floor, accessible only from the south stairwell, contains the law library and the District Attorney's office and the District Judge's office.

The four corridors of the ground floor feature a white ceramic tile floor accented with a light green, yellow, and buff brown tile border. A three-part marble wainscoting lines the hallways, which are made of plaster surfaced walls and ceilings. These corridors are the most original interior area of the building. Three of the four major sections of the first floor (County Clerk's two office areas and the Tax Assessor's space) all

---

<sup>1</sup> Garza County Commissioners Court Minutes, Vol. 9, p. 89, May 13, 1985.

United States Department of the Interior  
National Park Service

## National Register of Historic Places Continuation Sheet

Section 7 Page 8

Garza County Courthouse  
Post, Garza County, Texas

reveal remodeling with drop ceilings and sheet rock walls in place. Other lesser spaces on this floor remain mostly original.

On the second floor, virtually all the spaces have been modified. The second and third floors originally featured finished concrete floors and simple plaster walls and ceilings with a picture rail around the perimeter of each office and hall. Simple, drum-shaped, glass globe fixtures illuminated the hallways and offices.

In 1974-1975, the courtroom was heavily altered when the walls were furred and a dropped ceiling installed, significantly reducing the size of the space. The project also changed the south end of the third floor balcony into a storage closet and rotated all of the fixtures and seating 180 degrees. The same project moved the Judge's Bench from the north to the west wall and the jury box from the northwest to the southwest corner, with all seating moved from a north facing to a west facing layout.<sup>2</sup> Additionally the area below the balcony at the south end of the courtroom walled off to create a break room and office space. South of this area, the Treasurer's Office and other offices all display drop ceilings and sheet paneling. Carpeting covers most of the original unpainted concrete floor on the second floor. Areas of original concrete flooring, though now painted, are still evident in the courtroom.<sup>3</sup>

The third floor has undergone the most extensive remodeling of any portion of the building. The section at the north end of this floor originally contained the jail cells: six cells in the northwest sector and a female cell and kitchen/jailer quarters in the northeastern sector. The jail cells were removed in 1978 and the space converted into the Commissioners Court. The female cell quarters changed to storage and the old kitchen now houses a constable. The south portion of the third floor also changed as the old Jury Dormitory was converted into District Judge and District Attorney's offices, while the southeast corner reconfigured into a law library. Despite these changes to the building's interior, the Garza County Courthouse retains its integrity of location, setting, workmanship, materials, design, feeling, and association.

<sup>2</sup> Blueprint plans dated 1974 show this work to be done.

<sup>3</sup> Ibid.

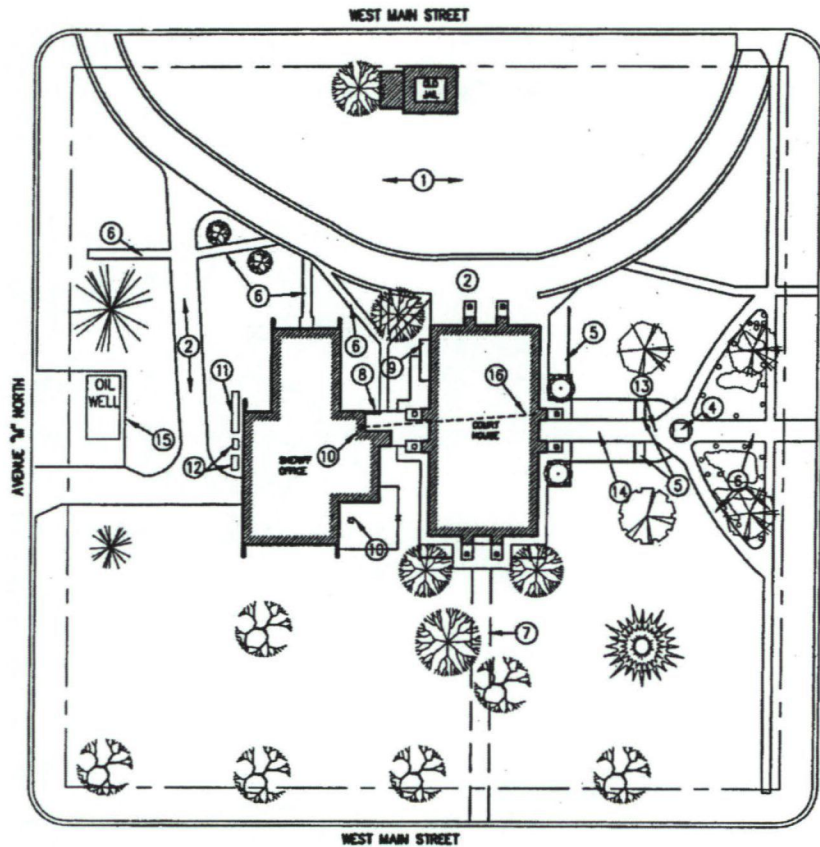
United States Department of the Interior  
National Park Service

# National Register of Historic Places Continuation Sheet

Garza County Courthouse  
Post, Garza County, Texas

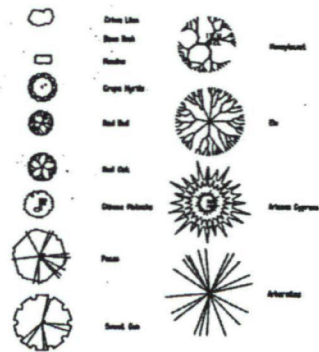
Section 7 Page 9

Figure 7-9 Existing Site Plan (source: Parkhill, Smith & Cooper, Inc., 2000)

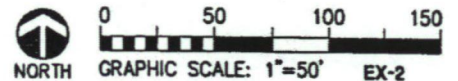


### KEYED NOTES

- AS INDICATED BY: (1) →
- 1 ASPHALT PARKING
  - 2 ASPHALT DRIVE
  - 3 OMITTED
  - 4 C.W. POST STATUE
  - 5 PLANTING BEDS W/ CONC EDGE
  - 6 CONCRETE SIDEWALKS
  - 7 LOCATION OF PREVIOUS CONCRETE WALK
  - 8 COVERED WALKWAY
  - 9 BASEMENT ACCESS
  - 10 RADIO TOWER
  - 11 GENERATOR
  - 12 COMPRESSOR
  - 13 FLAGPOLE
  - 14 EXISTING ACCESSIBLE RAMP
  - 15 CHAIN LINK FENCE
  - 16 RADIO TOWER GUY WIRES, ATTACHED TO PARAPET



### LANDSCAPING & SITE PLAN - EXISTING



---

**8. STATEMENT OF SIGNIFICANCE**

---

**APPLICABLE NATIONAL REGISTER CRITERIA**

- A** PROPERTY IS ASSOCIATED WITH EVENTS THAT HAVE MADE A SIGNIFICANT CONTRIBUTION TO THE BROAD PATTERNS OF OUR HISTORY.
- B** PROPERTY IS ASSOCIATED WITH THE LIVES OF PERSONS SIGNIFICANT IN OUR PAST.
- C** PROPERTY EMBODIES THE DISTINCTIVE CHARACTERISTICS OF A TYPE, PERIOD, OR METHOD OF CONSTRUCTION OR REPRESENTS THE WORK OF A MASTER, OR POSSESSES HIGH ARTISTIC VALUE, OR REPRESENTS A SIGNIFICANT AND DISTINGUISHABLE ENTITY WHOSE COMPONENTS LACK INDIVIDUAL DISTINCTION.
- D** PROPERTY HAS YIELDED, OR IS LIKELY TO YIELD, INFORMATION IMPORTANT IN PREHISTORY OR HISTORY.

**CRITERIA CONSIDERATIONS:** N/A

**AREAS OF SIGNIFICANCE:** Politics/Government

**PERIOD OF SIGNIFICANCE:** 1923-1951

**SIGNIFICANT DATES:** 1923

**SIGNIFICANT PERSON:** N/A

**CULTURAL AFFILIATION:** N/A

**ARCHITECT/BUILDER:** Carlander, Guy A., architect; Fred T. Bone Construction, builder

**NARRATIVE STATEMENT OF SIGNIFICANCE** (see continuation sheets 8-10 through 8-16).

---

**9. MAJOR BIBLIOGRAPHIC REFERENCES**

---

**BIBLIOGRAPHY** (see continuation sheets 9-17 through 9-18).

**PREVIOUS DOCUMENTATION ON FILE (NPS):** N/A

- preliminary determination of individual listing (36 CFR 67) has been requested.
- previously listed in the National Register
- previously determined eligible by the National Register
- designated a National Historic Landmark
- recorded by Historic American Buildings Survey #
- recorded by Historic American Engineering Record #

**PRIMARY LOCATION OF ADDITIONAL DATA:**

- State historic preservation office (*Texas Historical Commission*)
- Other state agency
- Federal agency
- Local government (Garza County, Texas)
- University
- Other -- Specify Repository:

United States Department of the Interior  
National Park Service

## National Register of Historic Places Continuation Sheet

Section 8 Page 10

Garza County Courthouse  
Post, Garza County, Texas

The 1923 Garza County Courthouse serves as the center of political and governmental life in Garza County, a role that it has fulfilled for over 75 years. Although established in 1907 as a hub of C.W. Post's experimental agricultural colony, Garza's county government experienced its most significant expansion in the booming, cotton-driven economy of the 1920s. Designed by Amarillo architect Guy A. Carlander, the Prairie School-influenced courthouse remains a symbol of the county's prosperity in that era. The courthouse meets Criterion A at the local level in the area of Politics/Government for the role it has played as the seat of county government.

Garza County was formed in 1876 from a section of Bexar County, which at that time included most of the western half of the state of Texas. Although Anglo settlement came slowly to the new county, by the late 1870s, a half-dozen sprawling ranches covered the area, creating a small population of 36 persons in 1880. Many early ranchers left due to the tough blizzard and drought cycle of 1886-1888 that reduced the population to 14 people in 1890. During the 1890s, the economy of the county began to recover. A series of wet years benefited local ranchers and resulted in attracting new stock farmers to the area. At the beginning of the twentieth century, Garza County's population reached 180 persons.<sup>4</sup>

The twentieth century came to Garza County when famed cereal producer, Charles William Post (1854-1914), arrived in the area to start an experimental colony. Well known in Battle Creek, Michigan, for his social planning and exemplary treatment of employees, Post, who spent time in Tarrant County in the 1880s, migrated to Garza County in 1906 to establish an idyllic community of prosperous, landowning farmers. Attracted to the inexpensive acreage of the Texas ranching frontier, Post purchased 213,324 acres of ranchland in Garza County and several hundred additional acres in adjoining Lynn County. This land, composed of large ranches, was then subdivided and sold in 160-acre tracts, complete with a house, barn, chicken coop, windmill and other appurtenances already in place.<sup>5</sup>

A critical component of Post's experiment was the need to create a social and economic hub for his colonizing venture. In 1907, Garza County did not possess any towns of size or significance and did not support an organized county government. Post soon remedied the situation, organizing an election in July 1907 to create a county government and choose a county seat. As a result of the elections, the county was formally organized and the newly created town of Post City became its county seat.<sup>6</sup>

<sup>4</sup> Webb, Walter P. "Garza County." The Handbook of Texas. Austin: Texas State Historical Association, 1950. Vol. 1, p. 674-675; Vol. 2, p. 398.

<sup>5</sup> Garza County Historical Museum. "Post City, Texas, Founded 1907." Also, Eaves, Charles Dudley and C.A. Hutchinson. Post City, Texas. Austin: Texas State Historical Association, 1952. P. 47.

<sup>6</sup> Ibid.

United States Department of the Interior  
National Park Service

## National Register of Historic Places Continuation Sheet

Section 8 Page 11

Garza County Courthouse  
Post, Garza County, Texas

Post City essentially served as a company town, with the land and structures owned by Post's Double U Land Company. The company surveyed and platted the townsite and began building a commercial section with a hotel, company store, and commercial block. The Double U Company constructed a gin and textile plant and built houses that were either sold or rented to settlers. Since the city did not yet have a rail connection, many early structures, were made from sandstone hauled from a company-owned quarry approximately 15 miles from town.<sup>7</sup>

The Garza County Commissioners Court held their first meeting on the prairie on July 15, 1907. Among items of business, the Commissioners ordered furniture for a future courthouse. By November, the Commissioners had selected a site for a temporary courthouse. The Commissioners Court voted on November 11 to designate the northwest corner of the Double U Building as the temporary location for the courthouse at a fixed rent of \$5.00 per month.<sup>8</sup> At the same time, the county agreed to purchase Lot 24, Block 75 for \$800 as a site for the future courthouse. The commission then voted to prepare plans for the temporary courthouse. The choice of purchasing a new lot for courthouse site was unusual in that the plat for the City of Post already included a courthouse square reserve two blocks west of the temporary courthouse.<sup>9</sup> Although the minutes shed no light on this issue, there are several possible explanations. It is most likely that the county wanted to proceed as quickly as possible, and the official plat, with all its public reservations, was several months away from being completed and accepted.

As the result of a January 6, 1908 meeting, the County Commissioner approved for plans for a courthouse. Prepared by M.S. Hall, the court awarded a contract of \$5,044 to F. L. Maupin to erect a stone, two-story, rectangular plan courthouse. The building was completed in June or July of 1908. In May 1908, the Commissioners Court ordered that a lumber "calaboose" or jail, measuring 8'x14' with 8' walls, be erected on the site of the courthouse. Three months later, the Commissioners Court ordered that the courthouse furniture be moved into the new building.<sup>10</sup>

County Commissioners reinforced their conviction of the temporary nature of the courthouse, when in May of 1908, Post petitioned the county to approve the plat of Post City and the public dedication of the courthouse square. Apparently this petition sparked a lengthy debate, as it did not approve of the dedication until June 25, 1909. Meanwhile, the Commissioners Court ordered on February 8, 1909, that the current courthouse square be planted in trees, in anticipation of the construction of a permanent facility.<sup>11</sup>

<sup>7</sup> Ibid.

<sup>8</sup> Ibid.; Garza County Commissioners Court Minutes, Vol. 1, p. 1, 21, November 11, 1907.

<sup>9</sup> Garza County Commissioners Court Minutes, Vol. 1, p. 35, November 15, 1907.

<sup>10</sup> Ibid., Vol. 1, p. 38, January 6, 1908; Vol. 1, p. 51, May 11, 1908; Vol. 1, p. 65, July 14, 1908.

<sup>11</sup> Ibid., Vol. 1, p. 51, May 11, 1908; Vol. 1, p. 89, February 8, 1909; Vol. 1, p. 117, June 25, 1909.

United States Department of the Interior  
National Park Service

## National Register of Historic Places Continuation Sheet

Section 8 Page 12

Garza County Courthouse  
Post, Garza County, Texas

Post's utopian goals for the city clashed with the reality of frontier life. Despite a prohibition of alcohol and brothels, all of the citizens of Post City were not of sterling character, and the need for a jail soon arose. In May of 1911 the Commissioner Court voted to purchase a small block of jail cells from the Southern Structural Steel Company of San Antonio. At the same time, the calaboose moved to the northwest corner of the lot. County Commissioners minutes also reveal a plan for a 16'x20' house near the cellblock. A local workman, T.M. Curlee, completed what must have been a simple frame enclosure described in the minutes.<sup>12</sup>

Post's efforts to create a model farming community were not entirely successful, as he was forced to rent many of the farm sites that he had created to sell to farmers. In an effort to create a wider economic base for Post City, Post erected a large cotton mill in 1911. By anticipating the rise of a cotton-based economy, Post not only gave local farmers a place to sell crops, but also stimulated cotton production in the region. Postex Cotton Mills, became the town's leading industry, employing 250 workers when it began production in 1913. In creating a product line of sheets and other cotton products, Post anticipated the need for economic diversification that would plague the region in years to come. Unfortunately, his untimely death in 1914 ended his visionary participation in the development of the South Plains economy, although his descendents still continue to operate the Double U Company.<sup>13</sup>

Despite C.W. Post's demise, by the early 1920s the county's economy had matured with a rapid expansion of population and agricultural activity. Cotton surged to the forefront as the leading crop on the Texas South Plain. In Garza County, Post's Double U Company sold or rented its farmland in the western half of the county to cotton farmers. With a profitable cash crop, high demand, and a booming regional economy, the decade of the 1920s saw a rapid expansion of the county's economy and population. The county's growth led to parallel increase in need for county governmental services. Increased tax revenues permitted the County Commission to erect a suitable courthouse and eliminate the use of the temporary building. In June of 1922, an \$82,000 bond issue for a new courthouse and jail was approved, with the bond issue carried on August 15, with 579 Yes to 355 No votes. The approved issue specified that the new courthouse to be erected on the square reserved in Post City's original town plat.<sup>14</sup>

A "prospectus committee" formed to develop specifications for the design of the new courthouse. The committee visited Lamesa, Tahoka, Lubbock, Floydada and Crosbyton to view existing facilities and gather information and ideas for the new building. On September 11, the committee met to review plans and specifications for a proposed courthouse. It is not indicated in the county records who prepared the plans. It may be that the plans reviewed were conceptual drawings by firms who would be interviewed later in the

<sup>12</sup> Ibid., Vol. 1, p. 216-218, 221, May 29, 1911.

<sup>13</sup> Leffler, John. "Garza County." *The New Handbook of Texas*. Austin: Texas State Historical Association Vol. 3, p. 108.

<sup>14</sup> Garza County Commissioners Court *Minutes*, Vol. 2; p. 182, 187-190, June 12, 1922; Vol. 2, p. 205-215, August 15, 1922.

United States Department of the Interior  
National Park Service

## National Register of Historic Places Continuation Sheet

Section 8 Page 13

Garza County Courthouse  
Post, Garza County, Texas

month.<sup>15</sup> On September 21, six architectural firms made presentations to the County Commissioners and the building committee. The six firms present included James C. Teague, Smith & Townes, David C. Castle, Henry P. Phelps, Sanguinett and Staats, George F. Campbell and Guy A. Carlander. By the end of the day, three firms made the "short list": Castle, Phelps, and Carlander. Carlander, who practiced in Amarillo, emerged as the successful architect.<sup>16</sup>

### Guy Anton Carlander

Born in Pratt, Kansas, in 1888, Guy Anton Carlander graduated from Ottawa High School in 1907 and attended Ottawa University, Kansas, from 1908 to 1911. In 1911, Carlander patented and marketed the "Carlander Swing," a folding swing for infants. That same year, the young architect left Kansas to attend the Art Institute of Chicago, where he enrolled in night school classes in draftsmanship in 1913-1914.<sup>17</sup> Carlander enlisted with the U.S. Army, a length of service that lasted approximately a year. Between graduation and Army service, Carlander worked on an intermittent basis for the Atchison, Topeka & Santa Fe Railway (A.T.& S. F.) out of the Chicago office as a draftsman and inspector. This work he took throughout the Southwest supervising construction projects of several railroad stations he designed in the Spanish/Mission Revival and Mediterranean Revival styles.

After his stint with the Army, Carlander again joined A.T.& S. F., working in Chicago and then moving with the architectural department to Amarillo in 1919. In 1920, Carlander opened his own practice in Amarillo at 212 East 6<sup>th</sup> Street. Carlander profited from his choice of Amarillo, as the city boomed in the 1920s, and remained relatively stable throughout the Depression. During this period the architect designed and supervised construction of A.T.& S. F. railroad hospitals in Albuquerque, Topeka, and Los Angeles. Some of his most notable Amarillo commissions include The Amarillo Natatorium (1922), Northwest Texas Hospital (1924), Summit School (1927), Fisk Medical Arts Building (1927), Amarillo College Administration Building/Ordway Hall (1936), Amarillo Hardware Company (1938), and the Amarillo Junior College Gymnasium/Amarillo College Women's Gymnasium (1939).

During the Depression Carlander worked on New Deal construction projects in Potter and Randall counties, including providing designs or supervising the work of the Federal Emergency Administration of Public Works and the Works Progress Administration. During his five decades of practice, Carlander designed in a host of styles, and was particularly adept at blending stylistic elements to suit a particular project. When Carlander typed his own biographical outline for the Panhandle-Plains Museum in 1972, he listed as his own personal early-career milestone projects the A.T. & S.F. hospitals, the Northwest Texas Hospital, the Bell

<sup>15</sup> Ibid., Vol. 2, p. 215, August 28, 1922; Vol. 2, p. 216, September 11, 1922.

<sup>16</sup> Ibid., Vol. 2, p. 218, September 21, 1922; Vol. 2, p. 222, September 29, 1922.

<sup>17</sup> Telephone inquiry to Registration and Records Office of the Art Institute of Chicago, November 8, 2000

United States Department of the Interior  
National Park Service

## National Register of Historic Places Continuation Sheet

Section 8 Page 14

Garza County Courthouse  
Post, Garza County, Texas

Indian Trading Post in Albuquerque, and the courthouse in Post. Carlander closed his practice in 1971, and died four years later in 1975, at the age of 87.

During October of 1922, Carlander met with the Commissioners Court on at least on one occasion. Court records do not indicate the extent or substance of that meeting, nor whether other meetings took place to discuss the county's needs or desires for the new courthouse. For his work, Carlander received \$2,250, 3% of the estimated \$75,000 project.<sup>18</sup> On December 20, 1922, the Commissioners Court advertised for bids. On the appointed day, bidding opened, with the Fred T. Bone Construction Company of Amarillo winning the contract as General Contractor for \$65,490, and the plumbing and heating contract going to James Samson of Post for \$7,651. All contractors agreed to start work on March 1, 1923 and finish within six months.<sup>19</sup> The Southern Steel Company of San Antonio entered into a separate \$5,635.00 contract to construct two steel cellblocks. The contract specified construction needed to be completed within 60 days after the courthouse was finished.<sup>20</sup>

The total cost for the courthouse and jail totaled \$81,026 (including Carlander's fees), slightly under budget of the \$82,000 bond issue. This total did not include interior furnishings, and as the project neared completion a committee traveled to St. Louis in July of 1923 to purchase furniture.<sup>21</sup> The courthouse was completed and occupied sometime in August or September of 1923. Commissioners Court officially accepted the courthouse on November 26, 1923. With the exception for the official actions of the Commissioners Court, exact dates of courthouse activities are unknown, as copies of the Post City Post, the only newspaper in the city during this period, were lost as a result of water damage.<sup>22</sup>

In October of 1923, the Commissioners Court advertised sale of the old courthouse and furnishings. Initially, there were no successful bidders, and the structure did not sell until November 20, 1924, when the Odd Fellows Lodge purchased it for \$4,000. The old courthouse served as a Lodge Hall for at least four years. Sometime between 1928 and 1938 the old stone building was demolished and a service station erected on the site.<sup>23</sup>

In the late 1920s, the old jail cells from the 1911 calaboose were moved to the north side of the courthouse square and encased in a one-and-one-half story brick building. The small jail, approximately 22' by

<sup>18</sup> Ibid., Vol. 2, p. 242, 245, December 20, 1922.

<sup>19</sup> Ibid., Vol. 2, p. 246, January 20, 1923; Vol. 2, p. 250-254, January 31, 1922; Vol. 2, p. 257-260, January 31, 1923.

<sup>20</sup> Ibid., Vol. 2, p. 264, March 5, 1923.

<sup>21</sup> Ibid., Vol. 2, p. 295-296, June 11, 1923; Vol. 2, p. 297-300, July 12-13, 1923.

<sup>22</sup> Ibid., Vol. 2, p. 325, November 12, 1923; Letter of Acceptance, November 26, 1923. This letter was found loose in the pocket of the front cover of Vol. 2 Minutes.

<sup>23</sup> Garza County Commissioners Court Minutes, Vol. 2, p. 311, October 1, 1923; Vol. 2, p. 411, November 20, 1924; Sanborn Fire Insurance Company Maps, Post, Texas, 1927, and 1927 updated to 1938. p. 1-6 in each year; historic photo, aerial view of Post, Texas. c. 1935-1940, Garza County Historical Museum.

United States Department of the Interior  
National Park Service

## National Register of Historic Places Continuation Sheet

Section 8 Page 15

Garza County Courthouse  
Post, Garza County, Texas

19', appears on the 1927 Sanborn Fire Insurance Map and is labeled "OLD JAIL". This structure remained in use as a drunk tank and "colored" jail until 1972.<sup>24</sup>

Over the last 75 years, the setting for the courthouse, the grounds, has evolved and changed. In December of 1923, trees were ordered from the Texas Nursery Company of Sherman to supplement those planted on the grounds earlier. At the same time, George Samson received \$1,000 to construct concrete sidewalks and make other improvements to the courthouse grounds. In the summer of 1925 the City of Post began a street-paving project, which paved the city's major avenues with brick. That same summer, the Commissioners Court voted in June to hire L. H. Howard, George Samson and James Napier to "pave and improve" a portion of the courthouse square. As a result of this city and county project, the streets surrounding the courthouse square were paved with brick, with concrete gutters installed along the four sides of the square and a curved driveway built on the north side of the grounds. This drive, with access at the northeast and northwest corners of the square, permitted vehicular access to the north end of the courthouse. The new driveway cut across the sidewalk that historically gave access to the north entrance, but the section of path between the driveway and the jail remained in use into the late 1980s.<sup>25</sup> Between 1925 and 1972 little changed on the courthouse square. At some point some point between 1925 and 1929, a gazebo was erected on the southeast corner of the square. Throughout the years, the gazebo (no longer extant) served as a focal point for band concerts, political rallies, and other community events.<sup>26</sup>

In 1956 and 1957 the eastern edge of the grounds were altered as the county prepared for a 50<sup>th</sup> Anniversary Golden Jubilee. Small garden areas were added on both sides of the sidewalk and raised stone beds were built, and a statue of C. W. Post installed in the center of these "Memorial Gardens." A lavish celebration took place in the summer of 1957. Marjorie Merriweather Post, C. W.'s daughter and the donor of the statue, attended, along with her daughter Dina Merrill, a well-known actress of the era. A crowd of over 2,000 attended the event.<sup>27</sup>

During the 1970s, major changes began to occur on the grounds of the courthouse square. Due to changes in laws regarding jail standards, the jail facilities both inside and outside the courthouse became obsolete. Because of the need for a new jail, the county constructed the Garza County Law Enforcement Center on the west side of the courthouse. Designed by Stanford & Hall Architects, the 1973 Garza County Law Enforcement Center, is a freestanding structure with a canopy extending to the light standards of the courthouse.

<sup>24</sup> Sanborn Map, Post, Texas 1927. p. 1-6; when the author made a visual inspection in December of 1999, the steel plate with Southern Steel Company's logo was still attached to the steel cages.

<sup>25</sup> Garza County Commissioners Court Minutes, Vol. 2, p. 454, May 12, 1925; Vol. 2, p. 471, June 15, 1925; historic aerial photograph of Post, Texas circa 1935 shows the curved drive.

<sup>26</sup> Interview, Donald Windham, December 15, 1999; Interview, Judge Giles Dalby, December 15, 1999

<sup>27</sup> The Post Dispatch Golden Jubilee Edition, September 12, 1957.

United States Department of the Interior  
National Park Service

## National Register of Historic Places Continuation Sheet

Section 8 Page 16

Garza County Courthouse  
Post, Garza County, Texas

---

To meet current jail standard, this new structure was expanded with a concrete block addition on its southeast corner in 1980.<sup>28</sup> At about the same time as the construction of the new jail, an oil well was drilled on the west edge of the grounds, with a pump jack installed. Another change occurred in the 1970s when the small jail on the north side of the grounds expanded with a low, shed roof, concrete block addition on the west side of the building. There is no access from the addition to older building, which is in poor repair and currently used to store seed.

In early 1985, an American Disabilities Act (ADA) project installed a concrete ramp on the east elevation of the courthouse. This project removed much of the original sidewalk. Another project sometime between 1985 and 1990 removed the sidewalk accessing the south entry of the building. A separate project in 1990 paved the parking area between the circular drive and the north edge of the property. This area slowly evolved into a parking area after World War II, as more of the county staff had need for parking.<sup>29</sup>

The Garza County Courthouse continues to serve as the center of political and governmental activity for the county. The courthouse has maintained its integrity of materials, design, workmanship, location, materials, feeling, and association. The courthouse is nominated under Criterion A at the local level in the area of Politics/Government.

---

<sup>28</sup> Garza County Commissioners Court Minutes, Vol. 7, p. 119-120, August 25, 1972; Vol. 7, p. 127, October 30, 1972; Vol. 7, p. 401, October 23, 1978; Vol. 7, p. 467, November 12, 1979.

<sup>29</sup> Garza County Commissioners Court Minutes, Vol. 9, p. 55, February 25, 1985; Vol. 9, p. 65, March 11, 1985; Interview, Donald Windham, December 15, 1999.

United States Department of the Interior  
National Park Service

## National Register of Historic Places Continuation Sheet

Section 9 Page 17

Garza County Courthouse  
Post, Garza County, Texas

---

### BIBLIOGRAPHY

Eaves, Charles Dudley and C. A. Hutchinson. Post City, Texas. Austin: Texas State Historical Association, 1952.

Garza County Commissioners Court Minutes. Vols. 1-9; 1907-1986.

Garza County Historical Survey Committee. Wagon Wheels: A History of Garza County, 1980.

Garza County Historical Museum Historic photograph files.

Garza County Historical Museum. "Post City, Texas, Founded 1907." 1998 brochure.

Garza County Reference File. Southwest Collection, Texas Tech University, Lubbock, Texas.

Interview with Giles Dalby, County Judge, November 12, November 19, December 15, 1999.

Interview with Esther Raines, widow of former sheriff (1951-1961), November 19, 1999.

Interview with Donald Windham, former County Coordinator of Construction (1979-1995), December 15, 1999.

Leffler, John. "Garza County." Austin: Texas State Historical Association, 1996. Vol. 3, pp. 108-109.

Major, Nettie Leitch. C. W. Post, The Hour and The Man. A Biography with Genealogical Supplement. Washington, D. C.: Judd & Detweiler, Inc., 1963.

McCrary, Giles Papers, Southwest Collection, Texas Tech University, Lubbock, Texas. (This is an unprocessed collection of seven large boxes of Double U Land Company records, mostly architectural drawings, maps, plats, and other technical material relating to the Post venture.)

Post, Texas Reference File. Southwest Collection, Texas Tech University Lubbock, Texas.

Post Dispatch. Golden Jubilee Edition, September 12, 1957.

Post, Texas Fire Insurance Maps, Sanborn Fire Insurance Map Company, 1921, 1927, and 1927-1938.

Webb, Walter P., editor. The Handbook of Texas. Austin: Texas State Historical Association, 1950.

United States Department of the Interior  
National Park Service

## National Register of Historic Places Continuation Sheet

Section   9   Page  18 

Garza County Courthouse  
Post, Garza County, Texas

---

Women's Division, Post Chamber of Commerce. Footprints: A History of Garza County and Its People.  
Sesquicentennial Edition. Taylor Publishing Co., 1988.

---

**10. GEOGRAPHICAL DATA**

---

**ACREAGE OF PROPERTY:** 2.35 acres

UTM REFERENCES	Zone	Easting	Northing	Zone	Easting	Northing
	1 14	278020	3674840	3 14	278120	3674740
	2 14	278120	3674840	4 14	278020	3674740

**VERBAL BOUNDARY DESCRIPTION** Block 73, original City of Post plat, Post, Garza County, Texas

**BOUNDARY JUSTIFICATION** The nomination includes all property historically associated with the courthouse and courthouse square.

---

**11. FORM PREPARED BY** (with assistance from John W. Murphey, Historian, Texas Historical Commission).

---

**NAME/TITLE:** Donald R. Abbe, Historic Preservation Consultant

**ORGANIZATION:** Parkhill, Smith and Cooper Inc.

**DATE:** August 25, 2000

**STREET & NUMBER:** 4607 23<sup>rd</sup> Street

**TELEPHONE:** 806-791-1615

**CITY OR TOWN:** Lubbock

**STATE:** Texas **ZIP CODE:** 79407

---

**ADDITIONAL DOCUMENTATION**

---

**CONTINUATION SHEETS**

**MAPS**

**PHOTOGRAPHS** (see continuation sheet Photo-28)

**ADDITIONAL ITEMS** (see continuation sheets Plan-19 through Plan-27)

---

**PROPERTY OWNER**

---

**NAME:** Garza County, Texas (Giles W. Dalby, County Judge)

**STREET & NUMBER:** 300 West Main Street

**TELEPHONE:** 806-495-4405

**CITY OR TOWN:** Post

**STATE:** Texas

**ZIP CODE:** 79356

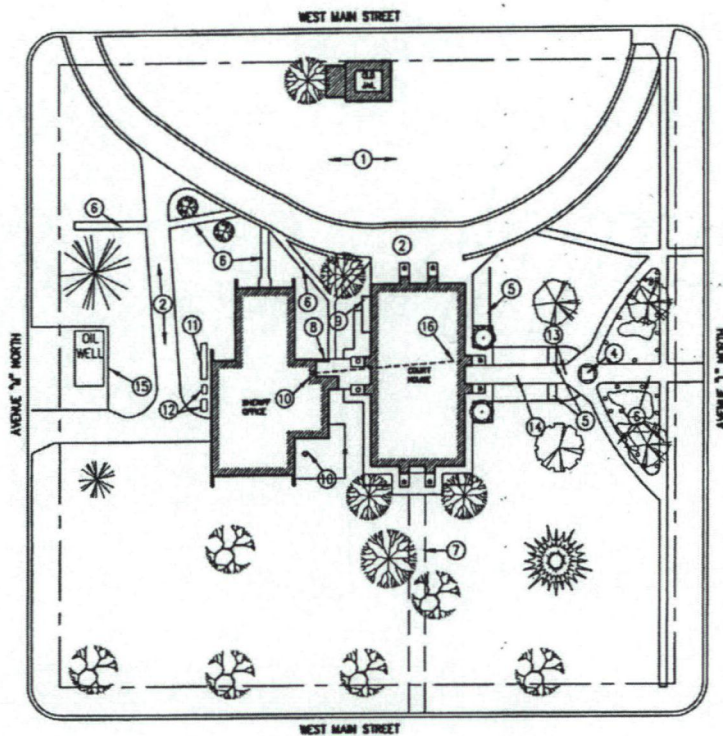
United States Department of the Interior  
National Park Service

# National Register of Historic Places Continuation Sheet

Section PLAN Page 19

Garza County Courthouse  
Post, Garza County, Texas

## EXISTING SITE PLAN - NO SCALE (COURTHOUSE MASTER PLAN, 2000)

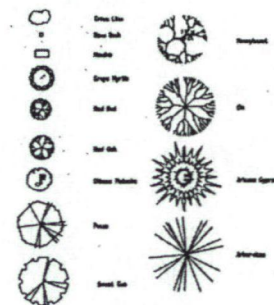


### KEYED NOTES

- AS INDICATED BY: ①
- 1 ASPHALT PARKING
  - 2 ASPHALT DRIVE
  - 3 OMITTED
  - 4 C.W. POST STATUE
  - 5 PLANTING BEDS W/ CONC EDGE
  - 6 CONCRETE SIDEWALKS
  - 7 LOCATION OF PREVIOUS CONCRETE WALK
  - 8 COVERED WALKWAY
  - 9 BASEMENT ACCESS
  - 10 RADIO TOWER
  - 11 GENERATOR
  - 12 COMPRESSOR
  - 13 FLAGPOLE
  - 14 EXISTING ACCESSIBLE RAMP
  - 15 CHAIN LINK FENCE
  - 16 RADIO TOWER GUY WIRES, ATTACHED TO PARAPET

Garza  
County  
Courthouse

Post, Texas  
January 31, 2000  
03-2200-00



### LANDSCAPING & SITE PLAN - EXISTING



NORTH

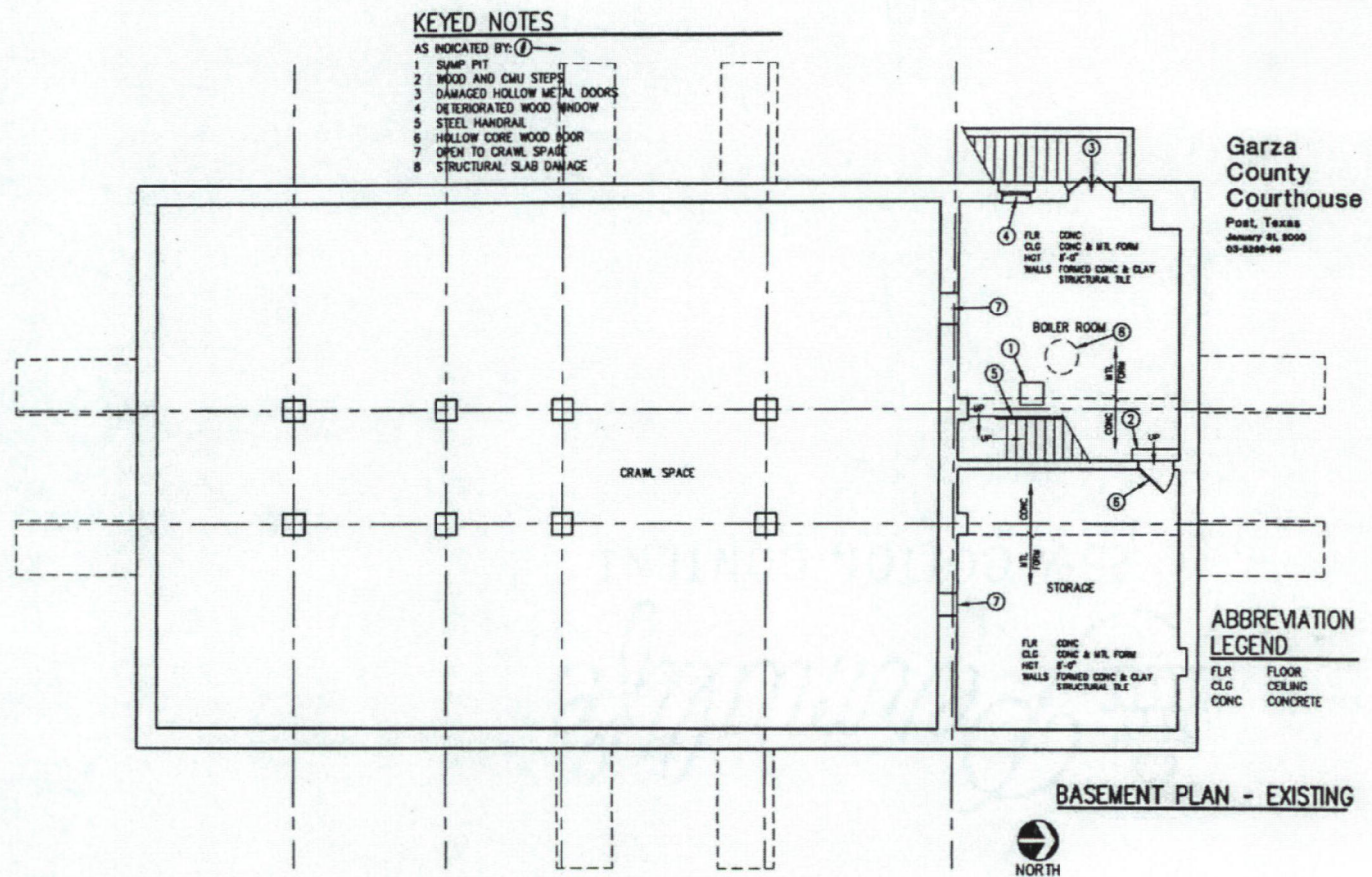
United States Department of the Interior  
National Park Service

# National Register of Historic Places Continuation Sheet

Section PLAN Page 20

Garza County Courthouse  
Post, Garza County, Texas

## EXISTING BASEMENT PLAN – NO SCALE (COURTHOUSE MASTER PLAN, 2000)

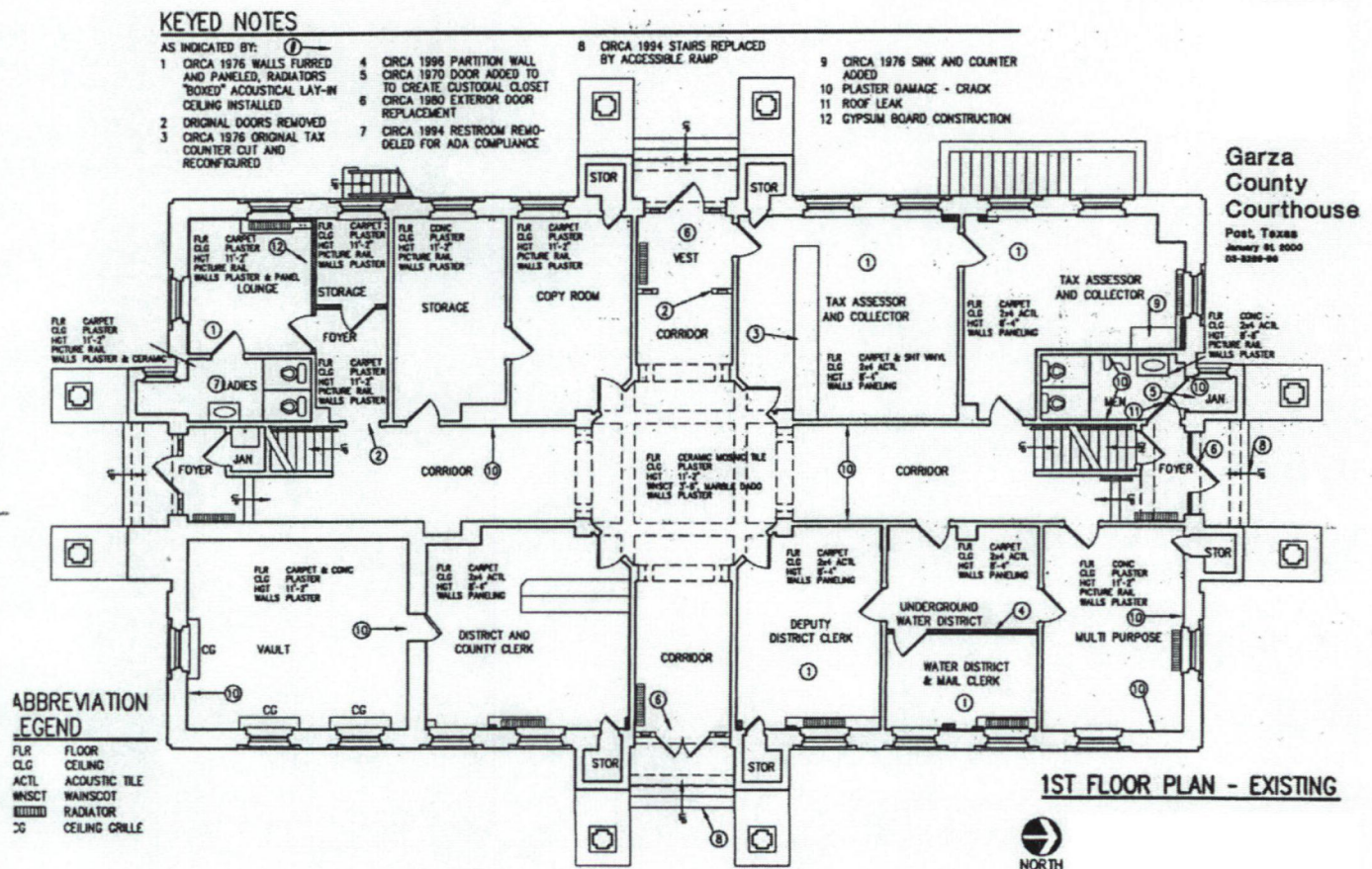


# National Register of Historic Places Continuation Sheet

Section PLAN Page 21

Garza County Courthouse  
Post, Garza County, Texas

## EXISTING FIRST FLOOR PLAN - NO SCALE (COURTHOUSE MASTER PLAN, 2000)



# National Register of Historic Places Continuation Sheet

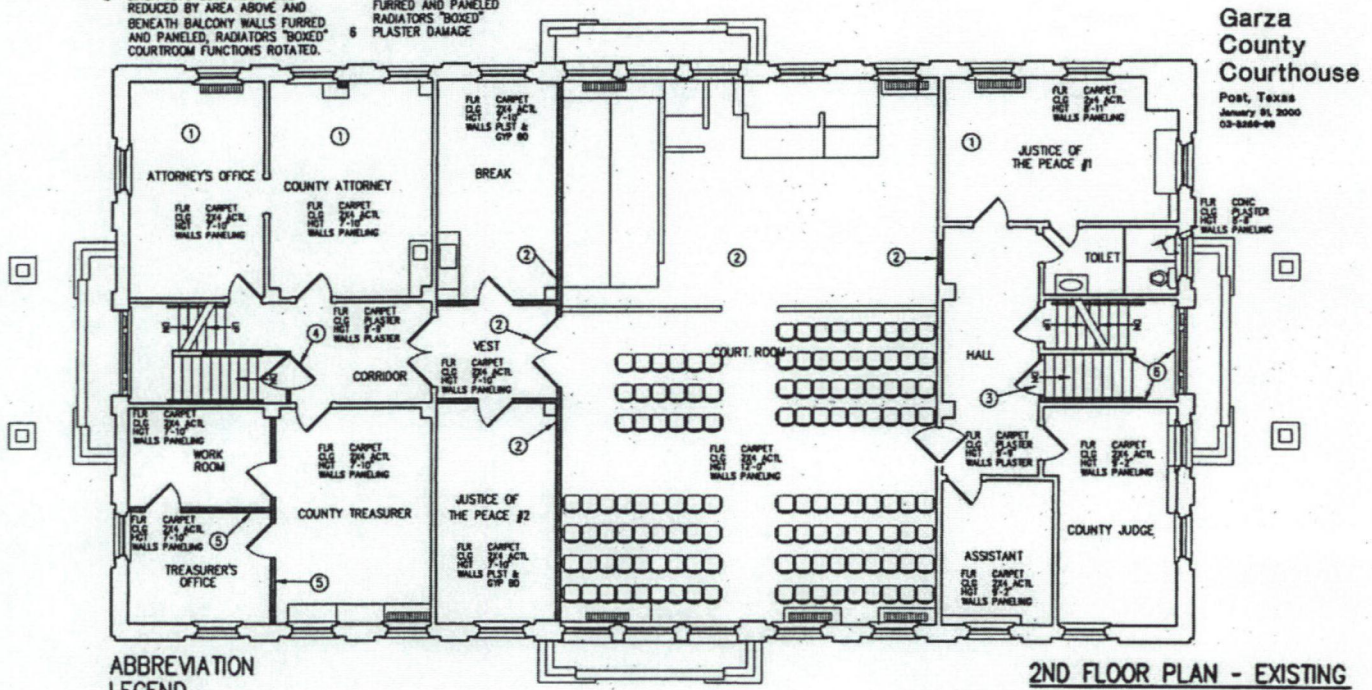
Section PLAN Page 22

Garza County Courthouse  
Post, Garza County, Texas

## EXISTING SECOND FLOOR PLAN – NO SCALE (COURTHOUSE MASTER PLAN, 2000)

### KEYED NOTES

- AS INDICATED BY:
- 1 CIRCA 1976 WALLS FURRED AND PANELED, RADIATORS "BOXED" ACOUSTICAL LAY-IN CEILING
  - 2 CIRCA 1976 COURTROOM SIZE REDUCED BY AREA ABOVE AND BENEATH BALCONY WALLS FURRED AND PANELED, RADIATORS "BOXED" COURTROOM FUNCTIONS ROTATED.
  - 3 CIRCA 1967 ALUMINUM STORE-FRONT DOOR INSTALLED
  - 4 CIRCA 1988 ALUMINUM STORE-FRONT DOOR INSTALLED
  - 5 CIRCA 1988 PARTITION WALLS ERECTED, SPACES FURRED AND PANELED, RADIATORS "BOXED"
  - 6 PLASTER DAMAGE



**Garza County Courthouse**  
Post, Texas  
January 01, 2000  
03-8260-00

### ABBREVIATION LEGEND

FLR FLOOR  
CLG CEILING  
CONC CONCRETE

2ND FLOOR PLAN - EXISTING

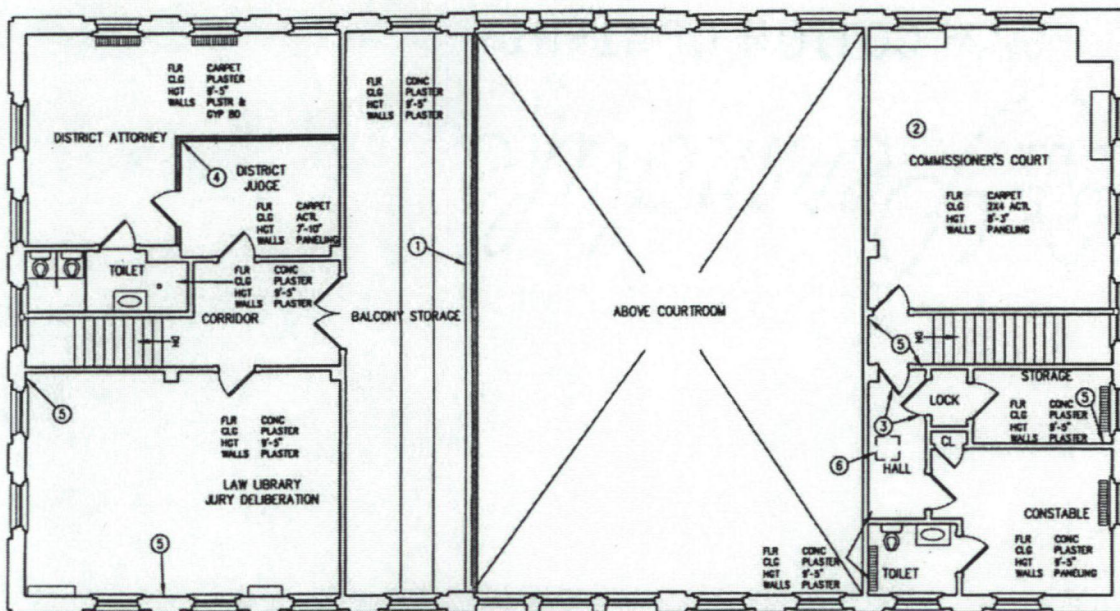


# National Register of Historic Places Continuation Sheet

Section PLAN Page 23

Garza County Courthouse  
Post, Garza County, Texas

## EXISTING THIRD FLOOR PLAN - NO SCALE (COURTHOUSE MASTER PLAN, 2000)



Garza  
County  
Courthouse  
Post, Texas  
January 31, 2000  
00-8280-00

### ABBREVIATION LEGEND

FLR	FLOOR
CLG	CEILING
CONC	CONCRETE
ACTL	ACOUSTICAL TILE

### KEYED NOTES

- AS INDICATED BY: ① →
- 1 CIRCA 1976, BALCONY WALLED-IN AND COURTROOM AIR HANDLERS INSTALLED.
  - 2 CIRCA 1978, MEN'S JAIL CELLS REMOVED, SPACE FURRED AND paneled, radiators boxed
  - 3 CIRCA 1978, DOORS CHANGED
  - 4 CIRCA 1982, PARTITION ADDED ROOM paneled acoustical LAY-IN CEILING INSTALLED
  - 5 PLASTER DAMAGE
  - 6 ATTIC/ROOF ACCESS

### 3RD FLOOR PLAN - EXISTING



United States Department of the Interior  
National Park Service

# National Register of Historic Places Continuation Sheet

Section PLAN Page 24

Garza County Courthouse  
Post, Garza County, Texas

## EXISTING EAST ELEVATION - NO SCALE (COURTHOUSE MASTER PLAN, 2000)

### KEYED NOTES

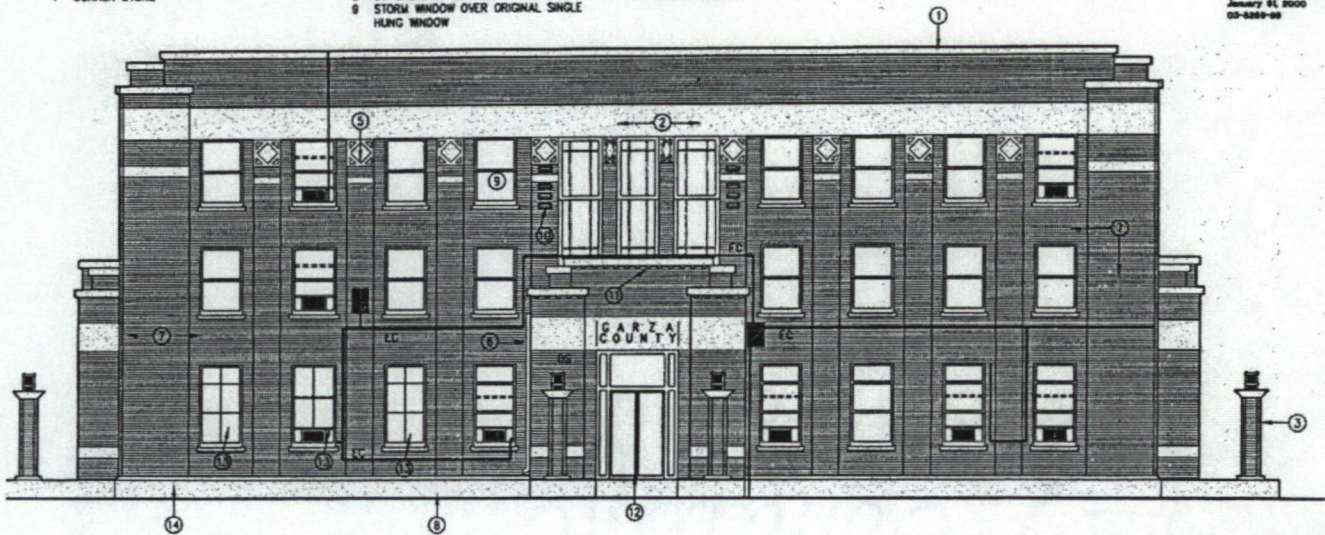
- AS INDICATED BY: ①
- 1 CAST STONE COPING
  - 2 CAST STONE BAND
  - 3 BRICK LIGHT POST WITH DECORATIVE LANTERN
  - 4 CORNER STONE

- 5 DECORATIVE CAST STONE PILASTER CAPITAL
- 6 PAINTED METAL DOWNSPOUT
- 7 FACE BRICK
- 8 CONCRETE WATERTABLE
- 9 STORM WINDOW OVER ORIGINAL SINGLE HUNG WINDOW
- 10 PROJECTED BRICK ELEMENT
- 11 PROJECTED BRICK DENTILS
- 12 ALUMINUM DOOR
- 13 STEEL WINDOW

### ABBREVIATION LEGEND

- DS DOWNSPOUT, DAMAGED
- EC ELECTRICAL CONDUIT & ATTACHMENTS
- WINDOW AC UNIT, ALTERED WINDOW

Garza  
County  
Courthouse  
Post, Texas  
January 01, 2000  
03-0209-00



EAST ELEVATION - EXISTING

United States Department of the Interior  
National Park Service

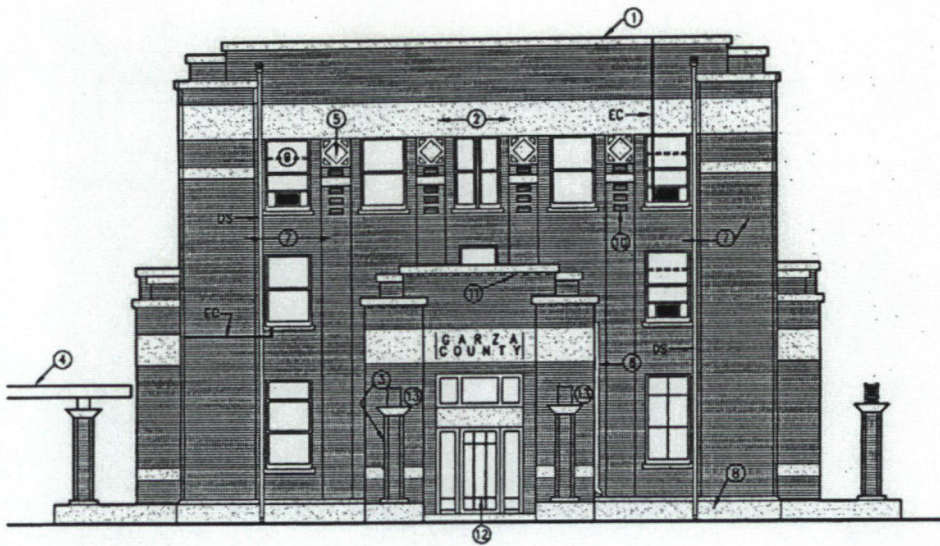
# National Register of Historic Places Continuation Sheet

Section PLAN Page 25

Garza County Courthouse  
Post, Garza County, Texas

EXISTING SOUTH ELEVATION – NO SCALE  
(COURTHOUSE MASTER PLAN, 2000)

Garza  
County  
Courthouse  
Post, Texas  
January 31, 2000  
00-0289-00



### ABBREVIATION LEGEND

- DS DOWNSPOUT, DAMAGED
- EC ELECTRICAL CONDUIT & ATTACHMENTS
- W WINDOW AC UNIT, ALTERED WINDOW

### KEYED NOTES

- AS INDICATED BY: ①
- 1 CAST STONE COPING
  - 2 CAST STONE BAND
  - 3 BRICK LIGHT POST WITH DECORATIVE LANTERN
  - 4 COVERED WALK TO SHERIFF'S OFFICE
  - 5 DECORATIVE CAST STONE PLASTER CAPITAL
  - 6 PAINTED METAL DOWNSPOUT
  - 7 FACE BRICK
  - 8 CONCRETE WATERTABLE
  - 9 STORM WINDOW OVER ORIGINAL SINGLE HUNG WINDOW
  - 10 PROJECTED BRICK ELEMENT
  - 11 PROJECTED BRICK DETAILS
  - 12 PRAIRIE STYLE WOOD DOOR
  - 13 LANTERN REMOVED, BUT EXISTING

SOUTH ELEVATION - EXISTING

United States Department of the Interior  
National Park Service

# National Register of Historic Places Continuation Sheet

Section PLAN Page 26

Garza County Courthouse  
Post, Garza County, Texas

## EXISTING WEST ELEVATION - NO SCALE (COURTHOUSE MASTER PLAN, 2000)

### KEYED NOTES

AS INDICATED BY: ①

- 1 CAST STONE COPING
- 2 CAST STONE BAND
- 3 BRICK LIGHT POST WITH DECORATIVE LANTERN
- 4 COVERED WALK TO SHERIFF'S OFFICE
- 5 DECORATIVE CAST STONE PILASTER CAPITAL

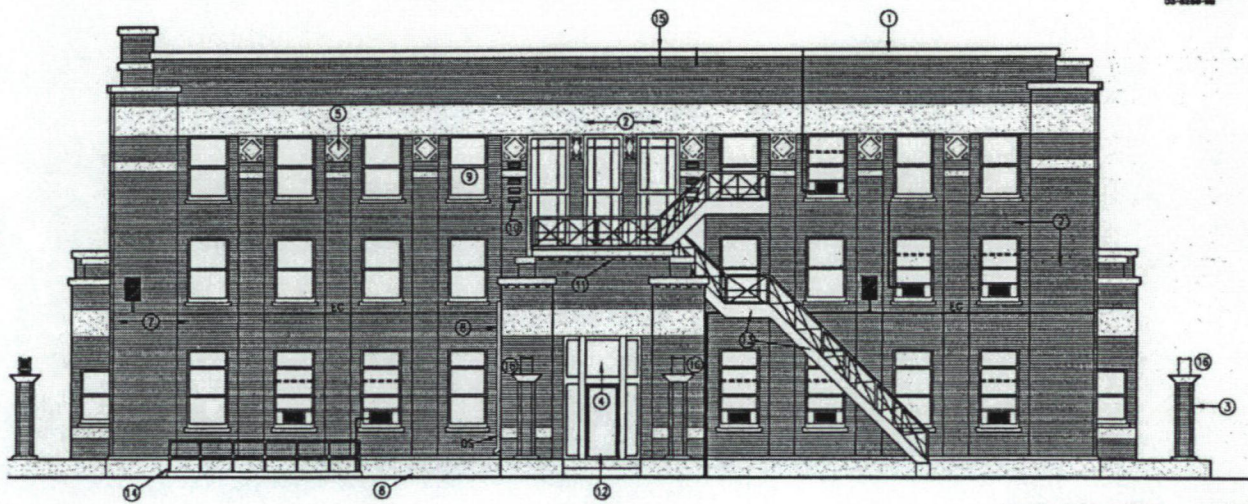
- 6 PAINTED METAL DOWNSPOUT
- 7 FACE BRICK
- 8 CONCRETE WATERTABLE
- 9 STORM WINDOW OVER ORIGINAL SINGLE HUNG WINDOW
- 10 PROJECTED BRICK ELEMENT

- 11 PROJECTED BRICK DENTILS
- 12 ALUMINUM DOOR
- 13 FIRE ESCAPE
- 14 STEEL TUBE RAILING TO BASEMENT ACCESS
- 15 MECHANICAL PIPING
- 16 LANTERN REMOVED, BUT EXISTING

### ABBREVIATION LEGEND

- DS DOWNSPOUT, DAMAGED
- EC ELECTRICAL CONDUIT & ATTACHMENTS
- WINDOW AC UNIT, ALTERED WINDOW

Garza  
County  
Courthouse  
Post, Texas  
January 31, 2000  
00-8289-00



WEST ELEVATION - EXISTING

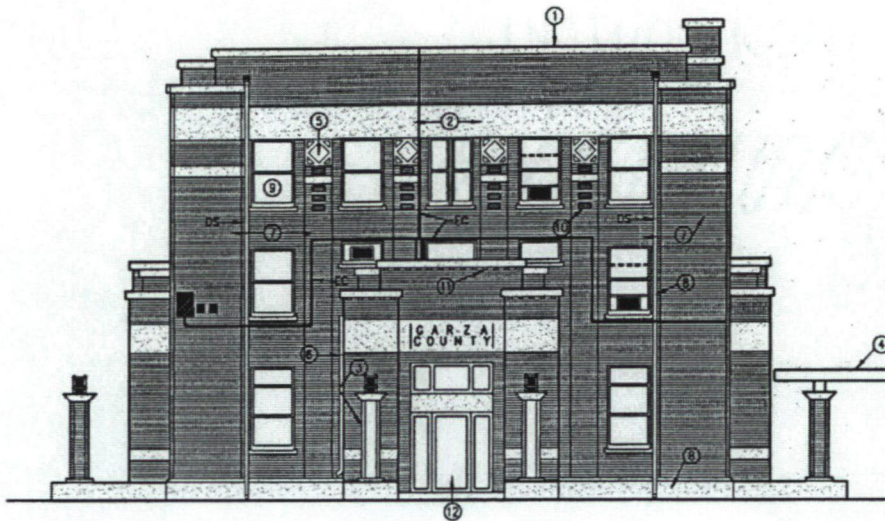
United States Department of the Interior  
National Park Service

# National Register of Historic Places Continuation Sheet

Section PLAN Page 27

Garza County Courthouse  
Post, Garza County, Texas

EXISTING NORTH ELEVATION – NO SCALE  
(COURTHOUSE MASTER PLAN, 2000)



Garza  
County  
Courthouse  
Post, Texas  
January 31, 2000  
00-0250-05

### ABBREVIATION LEGEND

DS	DOWNSPOUT, DAMAGED
EC	ELECTRICAL CONDUIT & ATTACHMENTS
	WINDOW AC UNIT, ALTERED WINDOW

### KEYED NOTES

- AS INDICATED BY: ① —
- 1 CAST STONE COPING
  - 2 CAST STONE BAND
  - 3 BRICK LIGHT POST WITH DECORATIVE LANTERN
  - 4 COVERED WALK TO SHERIFF'S OFFICE
  - 5 DECORATIVE CAST STONE PLASTER CAPITAL
  - 6 PAINTED METAL DOWNSPOUT
  - 7 FACE BRICK
  - 8 CONCRETE WATERTABLE
  - 9 STORM WINDOW OVER ORIGINAL SINGLE HUNG WINDOW
  - 10 HUNG WINDOW
  - 11 PROJECTED BRICK ELEMENT
  - 12 ALUMINUM DOOR

NORTH ELEVATION - EXISTING

United States Department of the Interior  
National Park Service

## National Register of Historic Places Continuation Sheet

Section PHOTO Page 28  
Texas

Garza County Courthouse  
Post, Garza County,

---

### Photographs

Garza County Courthouse  
300 West Main Street  
Post, Garza County, Texas  
Donald Abbe  
December 1999  
Negatives on file with Parkhill, Smith and Cooper Inc., Lubbock, Texas

Photo No.1 of 5  
East elevation  
Camera facing west

Photo No. 2 of 5  
West elevation  
Camera facing south

Photo No. 3 of 5  
Oblique view of east and north elevations  
Camera facing southwest

Photo No. 4 of 5  
South Elevation  
Camera facing north

Photo No. 5 of 5  
Oblique view of south and east elevations of old jail  
Camera facing northwest

UNITED STATES DEPARTMENT OF THE INTERIOR  
NATIONAL PARK SERVICE

NATIONAL REGISTER OF HISTORIC PLACES  
EVALUATION/RETURN SHEET

REQUESTED ACTION: NOMINATION

PROPERTY NAME: Garza County Courthouse

MULTIPLE NAME:

STATE & COUNTY: TEXAS, Garza

DATE RECEIVED: 10/12/01      DATE OF PENDING LIST: 11/05/01  
DATE OF 16TH DAY: 11/21/01      DATE OF 45TH DAY: 11/27/01  
DATE OF WEEKLY LIST:

REFERENCE NUMBER: 01001266

REASONS FOR REVIEW:

APPEAL: N    DATA PROBLEM: N    LANDSCAPE: N    LESS THAN 50 YEARS: N  
OTHER: N    PDIL: N    PERIOD: N    PROGRAM UNAPPROVED: N  
REQUEST: N    SAMPLE: N    SLR DRAFT: N    NATIONAL: N

COMMENT WAIVER: N

ACCEPT     RETURN     REJECT    11/21/01 DATE

ABSTRACT/SUMMARY COMMENTS:

Entered in the  
National Register

RECOM./CRITERIA \_\_\_\_\_

REVIEWER \_\_\_\_\_ DISCIPLINE \_\_\_\_\_

TELEPHONE \_\_\_\_\_ DATE \_\_\_\_\_

DOCUMENTATION see attached comments Y/N see attached SLR Y/N



GARZA COUNTY COURTHOUSE

300 WEST MAIN STREET

POST, GARZA COUNTY, TEXAS

PHOTOGRAPH 1 of 5



4

GARZA COUNTY COURTHOUSE  
300 WEST MAIN STREET  
POST, GARZA COUNTY, TEXAS  
PHOTOGRAPH 2 of 5



GARZA  
COUNTY

GARZA  
COUNTY

CHEVROLET

GARZA COUNTY COURTHOUSE  
300 WEST MAIN STREET  
POST, GARZA COUNTY, TEXAS  
PHOTOGRAPH 3 of 5



GARZA  
COUNTY

GARZA COUNTY COURTHOUSE  
300 WEST MAIN STREET  
POST, GARZA COUNTY, TEXAS

PHOTOGRAPH 4 of 5



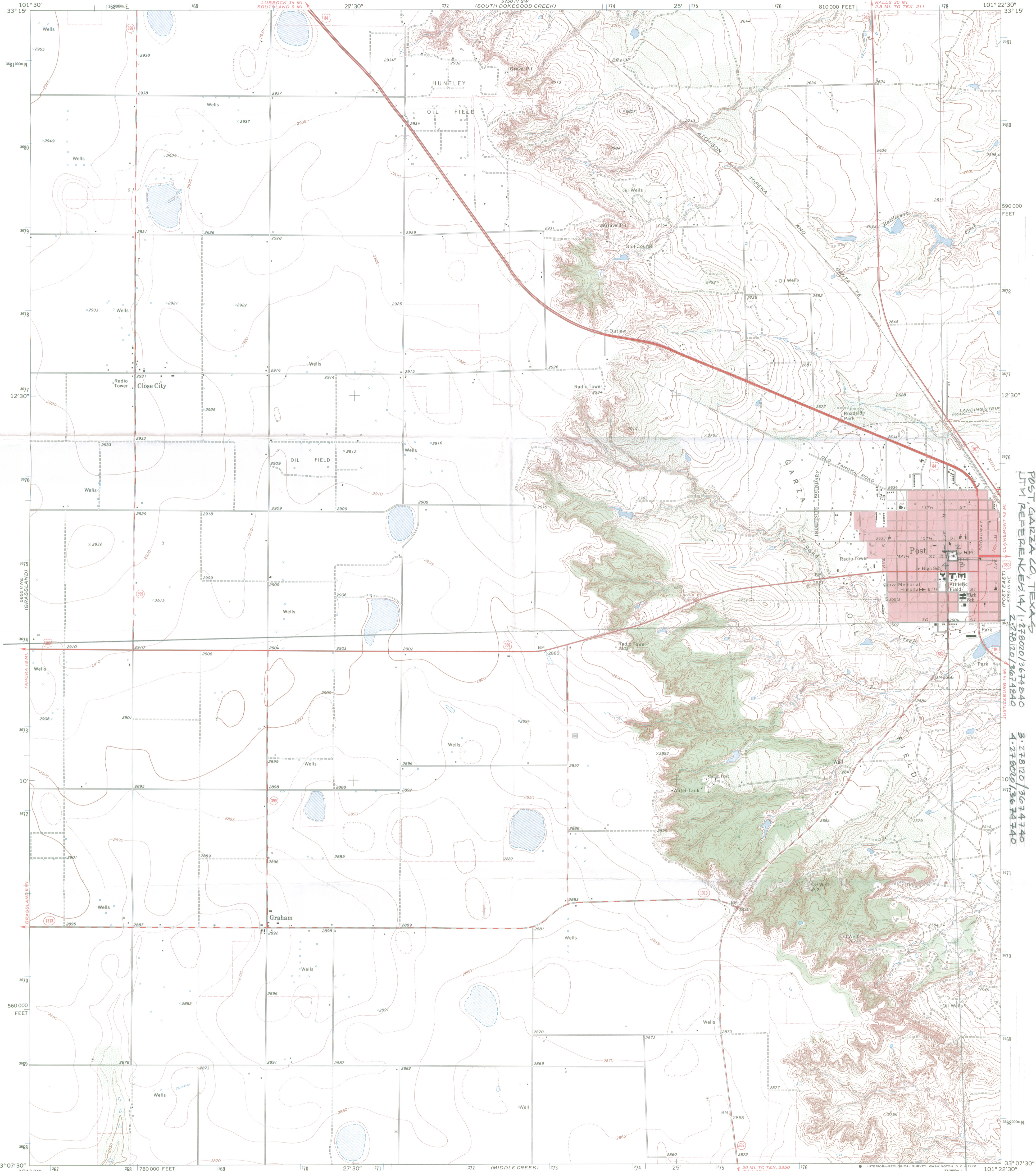


GARZA COUNTY COURTHOUSE

300 WEST MAIN STREET

POST, GARZA COUNTY, TEXAS

PHOTOGRAPH 5 of 5



GARZA COUNTY COURTHOUSE  
300 WEST MAIN STREET  
POST GARZA CO, TEXAS  
UTM REFERENCE: 14/1: 278020/3674840  
2: 278120/3674840  
3: 278120/3674740  
4: 278020/3674740

Mapped, edited, and published by the Geological Survey

Control by USGS and USC&GS

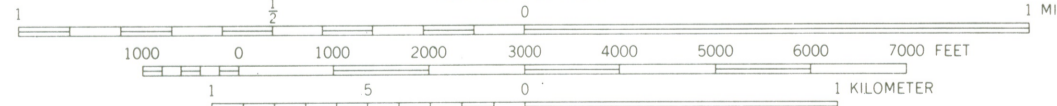
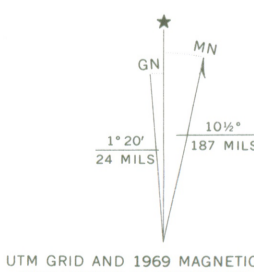
Topography by photogrammetric methods from aerial photographs taken 1968. Field checked 1969

Polyconic projection. 1927 North American datum

10,000-foot grid based on Texas coordinate system, north central zone

1000-meter Universal Transverse Mercator grid ticks, zone 14, shown in blue

Fine red dashed lines indicate selected fence lines



CONTOUR INTERVAL 10 FEET  
DOTTED LINES REPRESENT 5-FOOT CONTOURS  
DATUM IS MEAN SEA LEVEL



ROAD CLASSIFICATION

Primary highway, all weather, hard surface	Light-duty road, all weather, improved surface
Secondary highway, all weather, hard surface	Unimproved road, fair or dry weather
U.S. Route	State Route

THIS MAP COMPLIES WITH NATIONAL MAP ACCURACY STANDARDS  
FOR SALE BY U.S. GEOLOGICAL SURVEY, DENVER, COLORADO 80225, OR WASHINGTON, D.C. 20542  
A FOLDER DESCRIBING TOPOGRAPHIC MAPS AND SYMBOLS IS AVAILABLE ON REQUEST

POST WEST, TEX.  
N3307.5—W10122.5/7.5

1969

AMS 5750 III NW—SERIES V882